

A-34

JUST FOR OPENERS

PO Box 64 Chapel Hill, NC 27514-0064 (919) 419-1546
Past Editors Don Bull (1979-83) Ed Kaye (1984-1988) Art Santen (1989-1993)

Membership Renewals / Annual Dues \$20.00

If the label on your Newsletter Mailing Envelope has an Expiration Date of 06/30/99, please pay your dues now. A membership renewal card should be enclosed. Other members please verify the expiration date shown on your mailing label. If you do not agree with the date please notify me.

A-34s "Powderhorns"

Pat's "Spouse's Corner" is on A-34s this issue. One part of my collection I am proud of is the fact I have all five known beer advertising A-34s. A pretty tough type to come by.

1999 Convention Naples, FL (21st JFO Convention) (April 21st to 25th 1999)

Its not too late to get on the JFO Convention wagon. Fill out the registration form on the last page and call the hotel to reserve a room. The hotel has plenty of rooms but your convention rate may be \$45 instead of \$40. As usual the itinerary is planned around room-to-room trading. Wednesday and Thursday are set up for arrivals and room-to-room. Friday a lunch is planned at a Sanibel Island Brewpub. Friday afternoon will be the convention auction (please try to bring some good items for the auction). This year I am going to assist Verne and LaVerne and only openers or corkscrews with at least a \$10 value will be allowed in the auction. Saturday morning 8-3 will be the public show and Saturday evening a group dinner. Remember to bring a display. Starting this year the "Best In Show Award" will be known as the "Bill McKenzie Best In Show Award". Bring just one item for this contest whether it be your favorite opener or corkscrew, a new discovery or non-beer. The general display contest will have first, second and third places awarded. Take a little time and share your collection with fellow JFO members.

As of March 29th we have 31 members attending. It is not too late to come. Also Bob wanted me to let everyone know that each room at the Quality Inn has a refrigerator and coffee maker with coffee. Below is a map of the location in Naples just 4 miles from I-75.



CORKSCREW POSTCARDS WANTED

*I want to buy postcards that picture
a corkscrew or someone using one.*

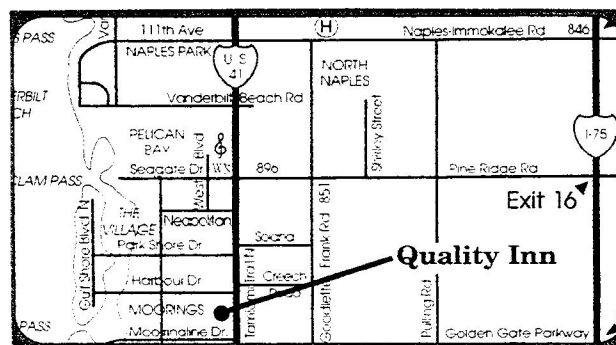
Don Bull

P. O. Box 596

Wirtz, VA 24184

or email: corkskrue@aol.com

Visit my website: <http://members.aol.com/corkskrue/index.htm>



"Just For Openers" Advertising Opener Book by Bull and Stanley

Finally the color proof came from the publisher and we are now just waiting for the books to be printed. Delivery will be made by mid-June hopefully. You can pre-order the \$29.95 book by sending \$23.95 (we are giving a 20% discount) plus \$3.20 shipping (US Only) for a total of \$27.15 (foreign shipping will be \$6).

**The Bullworks
PO Box 596
Wirtz VA 24184**

The book is outstanding and we will finally have a book that is truly a work of art.

Soda Handbook also by Schiffer (should be Available by Christmas)

Contract is signed with Schiffer. Work on the book must be completed by August. Don Bull and I plan on taking pictures sometime in May. If you have the following types with soda advertising let your editor know (A-33, B-5, B-9, B-65, C-10, F-13, H-11, P-90 & P-95).

Also very important if you have any special original opener packages, please contact me.

21st Year & JFO Original Members

The following should have been in last year's April issue, but I would now like to recognize original members still in JFO since 1978. Thank you very much for 20 years of support.

Don Bull (Founder)
Duane Dummer
Ed Kaye
Don Sherman

Joe Cardone
Jack Ford
George Lohmiller

Alex Darocy
Herb Haydock
Jerry Schele

Also special thanks to the following who joined during the first year.

Gary Deachman
Ollie Hibbeler
Pete Nowicki
Sass Pugh
Bob Stahly

John Donoghue
Carl Jantos
Jim Osborn
Art Santen
Vern Vollrath

Glen Enloe
Tom Lothridge
Roger Peters
Larry Sherk

"The Cola Club" (New Soda Collector's Club)

In the January issue I stated dues for "The Cola Club" are \$45 for US members, they are \$35. Close to 1000 members have already signed up and the first newsletter was published. A very nice job with future expansion planned. If you have any interest in soda items, you should join this club. Dues are \$35.00 per year US, \$45 Canadian and \$55 International. If you want to join please write for a membership application to:

**The Cola Club
PO Box 293158
Nashville TN 37229**

The Blue-Gray Breweriana Show February 11-14 Fredericksburg, VA

My usual departure time for the 3 and 1/2 hour drive to the show was changed due to Pat's car problems. First big show of the year and we have a two hour delay. We had to drive out of the way to drop Pat's car off for some work, before Pat, Corkie and myself left Durham. We arrived at the show at 5:00. I hadn't missed much but due to the overflow crowd we were suppose to stay at another nearby hotel. Instead we stayed at the main hotel but we could only have the room for that night (Corkie wasn't allowed at the alternate hotel).

The 22 hours I spent there yielded few openers, a few miscellaneous "A"s and a couple of "B"s. I finally did meet Clayton Denny who had the privilege of cleaning out the Brown Manufacturing Co's warehouse in Newports News, VA. He had a room full of "O-5"s and also a board with many of the original brands of "O-5"s produced by Brown under the Starr X trade name (see article this issue about "Starr X". I took some nice slide pictures and Clayton furnished me with some a nice written article.

As usual at the Blue-Gray, Larry Moter and I completed a big trade. Larry scored big from a total of 35 (***) wants on his "E" want list, Larry got seven (***) plus two (**) wants. He received an E-4-261 Pioneer, E-17-5 Walla Walla, E-23-12 New South, E-14-288 Union, E-7-85 Willow Springs, E-14-659 Hollywood, E-8-6 Rice Bros, E-16-8 Deppen, E-8-10 A.B.C., and a E-9-90 Everard. My side of the deal was the following, F-32-1 Gunther, A-29 Dr Pepper (Spinner), A-5-69 Atlantic City, P-132-1 Germania, A-35-46 Chattanooga, a second A-29 Dr Pepper (Spinner), B-21-558 Kanawha, E-1 Dr Pepper, and a B-18 Coca-Cola (with slogan). Larry was happy and I was happy and that is how a trade should come out.

Lou Sutton and I checked out a lot of rooms but there just wasn't much there in the way of good openers. Clayton Denny had more than everyone else put together. We stayed Thursday night and I packed up the truck the next morning and Pat went shopping while I continued browsing until 3 o'clock. Since the Holiday Inn was completely sold out that night we headed back to Durham. The usual JFO crowd was in attendance, Ken Ostrow, Dick Kopp, Fil Graff, John Fisher, Mark Barren (I couldn't get him to commit on a trade, maybe this summer), Lou Sutton, Clayton Denny, and Larry Moter. Larry Moter reported to me the show was slow for openers the whole weekend. Clayton Denny did find a O-5 Climax Beverages and he made quite a few sales Friday and Saturday. Best opener that turned up was an M-3-33 Moose in great shape but it was already promised to someone. There's always next year.

Quincy Illinois Breweriana Auction March 20th by Jim Osborn

As usual there was more hype in the advertising than there was quality. There was a LOT of breweriana and a lot of local collectors of Quincy, Illinois breweriana at the auction. Generally speaking, the quality of many of the items was somewhat lacking. Prices varied radically from bargains to extraordinary prices. I managed to pick up 2 different E-4 Dick's openers which I didn't have and an UL A-21. For the record, the A-21 reads: Don't Gamble-Be Sure of Good Beer, Goetz, Country Club, Tallen Candy Co., Phone 54, Moberly. I also picked up a pre pro Dick's tip tray pretty cheap, a couple of A-B postcards, 2 Dick's coasters different from the one I already had in my collection, and one more item which I may need some help with. Does anyone know any Minnesota breweriana collectors who could give me some info on a Schmidt's City Club item? I picked up what I thought was an old pre-pro olive green felt advertising piece for Schmidt's that has a graphic of the whole brewery. It was framed. When I got home and took it out of the frame I discovered that the material probably is felt, but it has some type of thin rubber backing attached. I'm wondering if it might be an old bar mat or place mat. The material is definitely old, but now I'm wondering if it is really pre-pro or perhaps circa 1930's. Does anyone know where I might turn for some clues? Thanks Jim Osborn.

**Western States Mini-Convention March 11-14 (Sands Regency) Reno, NV
By John Cartwright**

On March 11 at the last minute Cheryl and I decided to attend the Western States Mini-Convention at the Sands Regency in Reno, Nevada. We had not attended the show in two years so the anticipation level was high.

Due to the late start we could not hit a lot of stores on the way up. But the stops we did make were worth the entire trip. The first stop netted a A-15 Diamond A Ginger Beer Syracuse, N.Y. The second stop netted a A-2 Buzz & Jim 517-17th St. Oakland, B-23-4 Burgermeister, E-14-478 Buffalo and I-7-30 Nu-Globe. It was too late for anymore stores, so off to the Sands.

After dinner and checking in, off to the hospitality suite to grab a beer and gab with other collectors. A detour to JFO member Chris Quimby's room was a profitable stop. There I picked up a B-18 Key to Gravel Springs Water Highest Award St. Louis World's Fair, F-5 Coca-Cola In Sterilized Bottles / Coca-Cola Phone 289, P-19 Drink Stanford Rye Rainier Bourbon, K-2-4 Blatz, two different Rainier Beer crowns, Anchor Steam beer tap knob, and an Acme Beer Las Vegas Distributing mechanical pencil.

Eventually, I make it to the hospitality room and to my surprise I see none other than fellow JFO'er Don Whelan from back East. After a while of chit chat he tells me has a P-51-UL Enterprise, so off to the Whelan's room. There I get the P-51-UL (at future West Coast prices!) and a B-18-92 Acme Brew.

I finally got that long awaited beer!

Friday was a full day. During the show I got a E-9 Ute Chief from Don. I also got a Rainier Beer etched glass and a John Wieland Brewery glass. I left the convention to make a side trip through the stores of downtown Reno -- and got skunked. (What did I expect with all of these collectors in one place?) Nothing of interest for me in the Auction that night. However, I did see the Whelan's carting some Budweiser Breweriana!

Saturday morning after I picked up a N-62-1 Coca-Cola Schlitz from Don, we decided to go home. On the way through Central California I found an A-1-8 Globe, B-13 Pepsi-Cola -- Modesto Jacob Richter, E-14-98 Fresno, E-14-192 Monterey, P-53 Made For Roberts Fine Beverages 1001 Wilshire Blvd. Santa Monica, and a Cook's Beer two-sided tin sign.

JFO members in attendance were Cheryl and myself, Robert Della Rocchetta, Chris Quimby, Brad Vifquain, and Don and Cora Whelan. The Reno show is mostly cans, but it also offers openers, crowns, steins/mugs, bottles, coffee tins, Pre-Pro and Post-Pro breweriana. And it is put on by a very good group of people! And do not forget the gambling or skiing!

Just For Openers Auction Guidelines**Please Note: Fee of 15% Will Be Charged on Consignments**

This auction is a service to members of JFO. Consignments should be submit by sending an inventory list. If you wish to auction an item with a value of over \$30.00 I would be willing to place a reasonable minimum bid on the item. Any openers submitted for the auction should have a minimum value of \$10.00. Money received for your openers is sent to you within 4 to 5 weeks of the closing date.

Please Write First Before Sending Consignment Material.

When Bidding Please! give the Lot Number and a Short Description with each bid.

Please remember to at least sign your name on each auction page and keep a copy.

Please, Please, Please SEND IN YOUR BID SHEETS EARLY & NOT AT THE LAST MINUTE

"Opener Trivia"

In the January issue I discussed grading. Starting with this issue's JFO auction I am going to use a numerical system. I have broken down the grades as follows:

Grading (G): 0-Poor, 1-Fair, 3-Good, 5-Very Good, 7-Excellent, 9-Mint or Near Mint

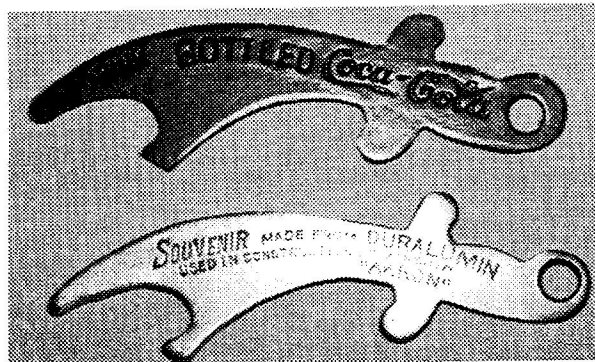
I will also from time to time use "9+" for Really Mint. Comments are appreciated.

Once again I am showing recent Coca-Cola fantasy openers. The types have spread to the A-9 Baseball Player and the A-12 Sword. It was thought that these openers were brass toned metal but when I received my examples they DO NOT HOLD A MAGNET. Please be very careful. The A-9 and A-21 have sold for \$50-\$100 and the first sword went for \$150 on eBay. It is buyer beware. A more realistic price is \$5-\$15 each (only above \$10 if you want an example bad). The stamping is very neat and upon close inspection all three are actually a little larger than original. The underside edges on all three are pretty sharp compared to steel openers. Brass is a much easier metal to work with than steel. The stamping especially on the A-9 is very neat. In fact the A-9 wording on an original is shown below left, with the location of the words as it is on the original. Compare with the right hand example of the "fakes".

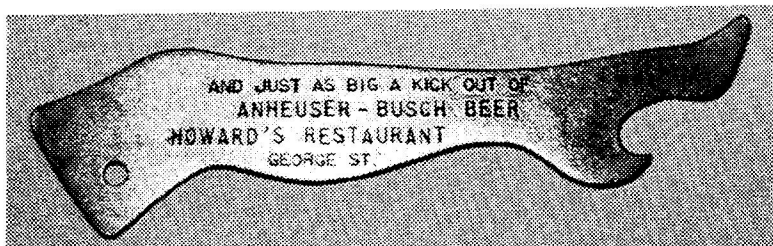
CANTON CITY BOTTLING WORKS
 CANTON OHIO
 DRINK COCA - COLA
Original

CANTON CITY COCA COLA BOTTLING CO
 CANTON CITY OHIO
drink COCA COLA
Fake

Also note on the Fake the town is called Canton City, Ohio (should be Canton, Ohio) and the word "drink" is in small script. I have never seen another opener (old) that has "drink" in small script. Please be careful. Below left, fake A-9 with real A-9. Below right, fake A-12 with real A-12.

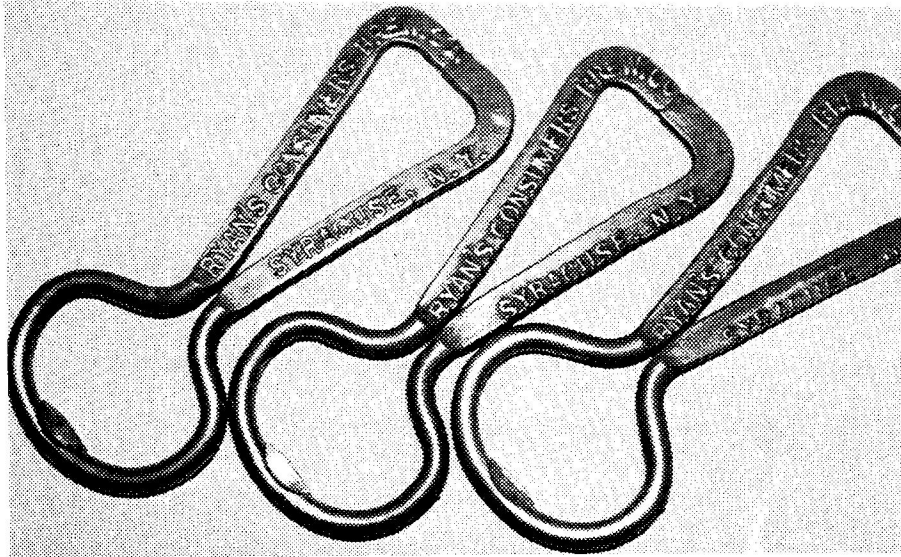


To the right is an A-54-1 A-B. I received a letter in the mail from a person wanting to sell about 30 openers and this was included. The person needed an opener, went to a yard sale and bought the whole lot. Kept one for himself and wanted to sell the rest. Except for the A-54 the rest were junk. The opener is from the York, PA area.



"Opener Trivia" (Continued)

Many times when you buy wire openers, the stamping is crooked or off center. This is especially true on pre-pro openers. The three E-16s shown below came from the same collection. One on the left has the stamping nicely centered. The middle one the stamping of "Syracuse, N.Y." is only 2/3s present. The opener on the right "Syracuse, NY" is only stamped half way on the opener with no periods showing. It would be very interesting to know if these were made one after the other. I always assumed that if a opener was made "well centered", most were made that way. The batch would all be good. Now I believe that it was luck of the draw. If the wire was not centered right on one opener it may be corrected for the next one. We have noted punctuation variations with periods present and periods missing. I will try to limit these in the future unless two openers turn up with well centered stamping and punctuation variations.



Ed Schaefer sent in a picture of the loop seal remover below. It is stamped "The Erie Brewing Company". Should we make this a "New Discovery"? Has anyone seen other brewing company examples. Technically it opened a bottle and probably predates crown caps.



"O-5" mold with Brass Tags (Note rare Delaware Punch and Schlitz) See Starr-X Article

Ebay Going Strong

It has been over a year since I have written about Ebay, the internet computer auction. The number of openers and corkscrews being sold daily has grown tremendously. Of course the number of buyers chasing these items has also grown. Many JFO members are active with corkscrew collectors leading the way. Just about any serious corkscrew collector seems to be buying and selling on Ebay. I have been very successful buying and selling, but have also had my share of losses when buying items. At any one time about 2700-2800 openers are currently on Ebay each day and about 500-600 corkscrews.

Corkscrews are definitely the hottest items, opener wise. Next would be soda openers especially Dr Pepper. If you have an unusual Dr Pepper opener it is better than money in the bank. Starr X openers (O-5s and Long Necks) are also bringing big prices. Beer openers are a real hit and miss, with types usually bringing good money but a lot of sleepers go through too. I bought a C-13-242 Rockwood Special Beer and a junk paint can opener for \$3. Even though shipping was \$3 I got a steal.

Auctions go 3, 5 or 7 days with most going 7 days. The more time you allow for bids, usually the better price it will bring. I have become a last second bidder because most opener collectors know my Ebay alias (Just-For-Openers) and anytime I bid early (before the last minute) I am usually outbid. Many buyers will bid early and bid strong. When I bid at the last minute the old blood gets flowing, especially when it is an item I want. It is a bad feeling when you bid in the last few seconds and the screen pops up you have been outbid by another bidder. Bids take me about 15 seconds to enter so I only get one chance when it is under 20 seconds to go.

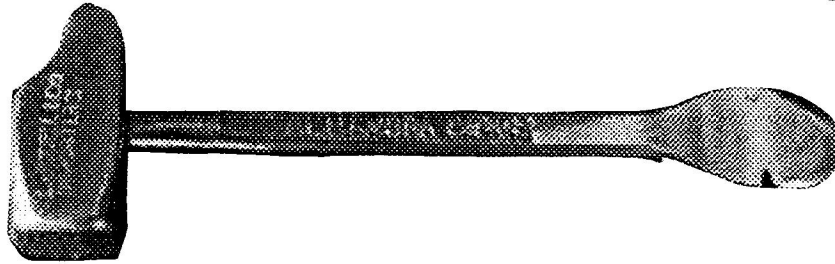
Ebay is a lot of fun but about 90 percent of the openers are junk or cheapies. You can get a lot of entertainment by reading item descriptions. The favorite being "Rare Coca-Cola Wall Mount in the Box". We are talking about an O-5 Starr-X which must of had about a billion produced with half of those still with their original boxes. Hopefully by now you get the picture and if you are not an Ebay participant, you need to be. It is the flea market and antique show of the future especially for small collectibles.

Some of the items I have bought are A-49-1 Gilt Top (\$310 early last year I bid early and had to pay big), P-79-2 Blatz (\$430 shown next page), P-135-1 Tivoli (\$600 outbid Tom Atkinson and all of the other corkscrew collectors were at the CCCC Convention in California), N-59-1 National Malting (\$28 shown next page), M-88-2 Falstaff (\$15 seller did not show piercer was missing, so item returned after selling for \$56 and I get it for \$12), A-1-UL Crockery City (\$30), A-13-14 Lemp (\$60), A-26-1 Empire (\$15), A-33-5 Hamms (\$132 I paid high and it got lost in the mail, working on a refund now), B-11-1 Rainier (\$125), B-23-52 Abner Drury (\$4), E-2-28 Bunker Hill (\$27), E-4-4 American (\$21), E-4-84 Schultz (\$36 with 20 other junk openers), E-4-279 Jackson (\$16), E-23-25 Garden City \$20), F-5 Coca-Cola Milwaukee (\$132), F-6 Coca-Cola (\$80), G-1-67 Hupfel (\$18 with some junk openers and coasters), H-1-28 Liberty (\$29 with 9 junk openers), L-2 A-B Var B (\$80), N-32-1 Budweiser (Mint In the Box) (\$44), N-47-1 Big Chief (\$38), N-67-2 Stag (\$45), O-10 Coca-Cola Roanoke (\$55), O-18 Coca-Cola (\$85), O-18 Coca-Cola (\$95) and O-Hoof Coca-Cola (\$110). These are the main beer & soda ones

Other beer openers selling A-54-2 Walters (\$136), D-15-1 Excelsior (\$285), Several "K" Types (\$15-\$75 mostly K-5s and K-13s), L-2 Bottles (Mostly A-B Var A \$30-\$100) and M-3s (Nothing real good \$10-\$60) and P-38 Anheuser-Busch 2 Stanhopes Near Mint (\$710).

Ebay Going Strong (Continued)

Cigar Box Openers have been bringing very high prices also. The unknown variety shown below brought \$310. As with anything nicer condition and unusual types bring the most.

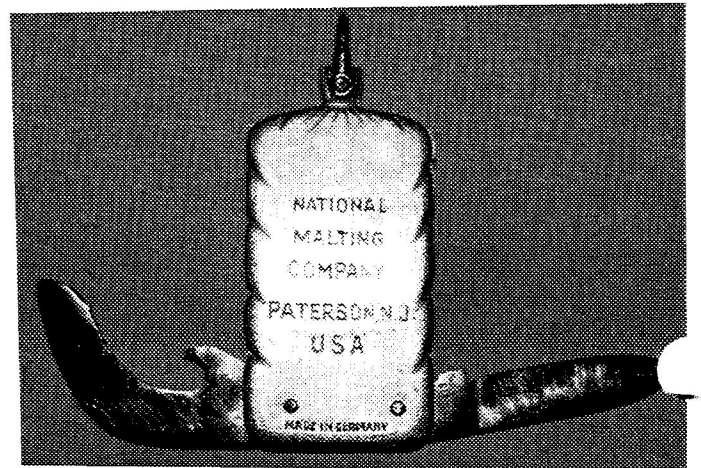
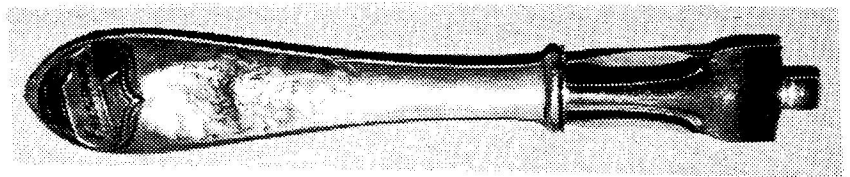
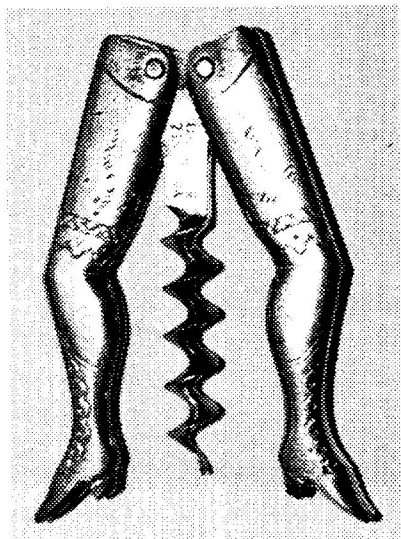


Soda openers have brought all kinds of crazy prices. Three A-9 Coca-Cola Baseball Players have sold with the Canton, Ohio bringing \$265 and two A-9 with Coca-Cola in script bringing \$710 for the first one and \$425 for the second one. Dr Pepper openers have brought the following prices, A-17 Lion Head (\$453), A-29 (Spinner) (2 have sold \$150-\$200), B-14 Dr (\$150), N-29 Bullet Pencils (\$325 first time and \$225 second time). Also an E-14 Drink Frostie Old Fashion Root Beer (\$86). Soda prices are coming down some as tough openers appear for a second and third time. The rule for selling is to be the first out of the gate.

Cast iron figurals have done well with a F-429 Coyote (\$1775), F-423 Skull (\$1077 & \$1500 the second time), F-418 Winking Boy (\$600 did not meet the reserve), F-410 Florida Pipe & Foundry (\$540), F-39 Sammy Samoa (\$740) and 1933 World's Fair Dinosaur Opener (\$686)

Corkscrews are the leaders with some very high results. 1866 John Adt Patent (\$3300), 1878 Sperry (\$3201), Syroco Knight (\$2410 Wire Helix & \$2850 Web Helix, \$1560 Web Helix), 1883 Strait (\$1560, \$2026, \$1600), 1888 Gilcrest Bar Mount (\$2550), 1884 Iron Handle Curey (\$1380), 1880's Hicks & Reynolds (\$2280), 1891 Davis Corkscrew & Knife (\$477), 1878 Tucker (\$2375), 1899 Jopson (\$1225) and Crosby Pup (\$565),

The Ebay market is really taking off. Don't miss out on the fun. It is a great source for openers and corkscrews especially if you have money.



Starr-X Openers by Brown Manufacturing of Newport News, VA

Raymond M. Brown of Newport News, Va. owned the local Coca-Cola Bottling Plant and also was the father of the type "O-5" bottle opener along with the "Long Neck" or "Oblong" O-5 which was his first patented opener on April 21, 1925. Brown Mfg. called it their "Standard" and they were also known as the "Starr X Sanitary Bottle Opener". The "O-5" was patented on November 2, 1943 and his patent would lead to the production of tens of thousands of StarrX openers. Opener trivia from July, 1998 shows a very unusual Brown Mfg. Co. opener with a patent date of "4 21 25". We can assume that this style was one of his first attempts at a bottle opener. The "Long Neck" O-5 also shows this patent date and was produced in fairly large numbers with Coca-Cola leading the way as it did on the O-5s.

Today every other flea market table has a Coca-Cola O-5 for sale. Some O-5s do have Pat.Pend. so they were probably produced before the patent was approved in 1943. Business was brisk through the 40s, 50s and 60s. Even when Brown moved production to Germany in 1971, Coca-Cola openers were produced in great numbers along with many other brands. The business held on until recently when the Brown family sold the bottling plant, Starr X patents and the warehouse where the openers were made.

JFO member Clayton Denny is friends with the Brown family. In 1995 the Brown family bought the warehouse back with all of its contents. The family was planning on discarding the contents and told Clayton he could take what he wanted. He had to do the moving himself with no help and had a little over a day to gather everything he could. Three tractor trailer loads (hopefully they were all Coca-Cola) still went to the dump except for what the truck drivers kept. Clayton managed to gather a very impressive collection of the original molds, cases of original openers and a lot of documentation.

Clayton and I met at the Blue-Gray show in Fredericksburg, VA. He brought a large selection of openers and a lot of molds. I used a roll of film taking pictures and three mold views can be seen. At one time I thought that the numbers on the back of O-5s may have been years they were made or variations. Clayton pointed out that they were simply mold numbers. Molds either made 10 or 12 openers. It was a sand cast process and they were numbered one through 10, 11 through 20 and so. The names were made by adding a brass name tag to the mold and each brass tag had was numbered to match the individual opener mold. Once made, the painting department of women, would paint the opener using a rubber roller to apply the color. After 1971 the imported German openers were still painted in Newport News. Clayton obtained most of the brass plate names for each brand made by Brown.

The following is a list of known beer and soda "O-5"s and "Long Necks" and "Side Mounts". Using the Handbook, current soda listings and copies of Clayton's brass tags, the list was compiled. When collecting Starr X openers one of the first questions a collector will ask, "is it made in the U.S.A.?" USA made openers are much more desirable than their West Germany or Germany counterparts. Quality is very noticeable and the German pieces usually look like they were cast with stones instead of sand. The metal has a rough look, not smooth like USA openers. In June of 1998 Brown Mfg. Co. was moved to Alpharetta, GA (a suburb of Atlanta).

The highest prices I have seen for O-5s have been realized on eBay (Polar (\$229), Green Spot (\$166) and Beaufont Ginger Ale (\$162). The Beaufont is not out of line but the Polar certainly is and Green Spot is more common than either of those two. Most openers with a rarity of 3-5 should be \$20 on the high end, while 1 and 2 rarity can be name your own price.

Starr-X Openers by Brown Manufacturing of Newport News, VA (Continued)

O-5 United States Beer Openers (Starr X)	O-5 United States Soda Openers (Starr X)
Acme Beer (3)	Barq's (4)
Braumeister (3)	Drink Barq's It's Good (4)
Budweiser (4)	Drink Beaufont Ginger Ale Giant Beverages (1)
Budweiser King Of Beers (4)	Bireley's (3)
Burgermeister Beer (3)	Canada Dry (2 Var Letters (A) Small (B) Large) (4)
Climax Beverages (2)	Canning Beverages (3)
Dixie 45 Beer (4)	Climax Beverages (2)
Falstaff (4 Stars) (4)	Drink Coca-Cola (5)
Falstaff (4)	Enjoy Coca-Cola (5)
Falstaff Beer (3)	Delaware Punch (2)
Premium Quality Falstaff Beer (4)	Double Cola (3)
Grand Prize Lager Beer (5)	Dr Pepper (4)
Grand Prize Texas' Largest Seller (1)	Dr Pepper Good For Life (3)
Jackson Brwg. Co. Jax Beer New Orleans, LA. (3)	Drink Dr Pepper (4)
Lucky Lager X (3)	Grapette (4)
Miller High Life (4)	Green Spot (2 Var (A) Green (B) Red) (3)
Pabst (3)	Drink I-Cee (3)
Pearl (3)	Drink Ju-C Beverages (4)
Pilsen (3)	Kist (4)
Pilsener (3)	"The Liquid" (3)
Regal Pale (3)	"Mr" Cola (3)
Rolling Rock (4)	Drink Nehi (2)
Schlitz (1)	Orange Crush (4)
Simon Pure Beer-Ale (3)	Orange Crush Carbonated Beverage (4)
Southern Select Beer (5)	Drink Rock Spring (3)
Stegmaier's Gold Medal Beer Wilkes-Barre, Penna. (3)	Pep (3)
Always Serve Sterling Beer (3)	Pepsi-Cola (5)
	Pepsi-Cola (4)
"Long Neck" or "Oblong" O-5 Soda Openers	Polar (2)
Big Bill (2)	Drink Red Rock Cola (3)
Big Boy (2)	Drink Rock Spring (3)
Canada Dry (2)	Drink Royal Crown Cola (4)
Coca-Cola (5)	7 Up You Like It It Likes You (4)
Drink Coca-Cola In Bottles (Also with Corkscrew) (2)	Drink Squirt (Script) (3)
Icy-O (3)	Squirt (Block) (3)
Lime Cola (1)	Tru-Ade (4)
"The Liquid" (2)	White Rock Ginger Ale (3)
Drink Mavis (3)	
Nehi (3)	O-5 Extra Large for Milk Bottles
Nu-Grape (Pic of Bottle) (1)	Flight Chocolate Malted Akron, Ohio (1)
Orange Crush (5)	
Serve Saegertown (2)	O-5 Side Mount Soda Openers
Whistle (3)	Drink Coca-Cola (Script) (1)
White Rock Ginger Ale (Also with Corkscrew) (2)	Delaware Punch (2)
	"The Liquid" (3)
Rating Starr Openers: 1 Rare to 5 Very Common	

If anyone has an opener not listed, beer or soda, please notify me. Brown also produced a lot of foreign openers, mainly for the Latin-American market. Those are not listed as I am concentrating on United States brands. The next page is a 1944 Brown Mfg. Co. inventory list.

Brown Manufacturing Company, Inc.

MANUFACTURERS OF




STATIONARY BOTTLE OPENERS

Newport News, Virginia

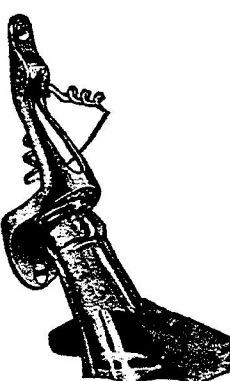
INVENTORY DECEMBER 31, 1944

Standard Openers



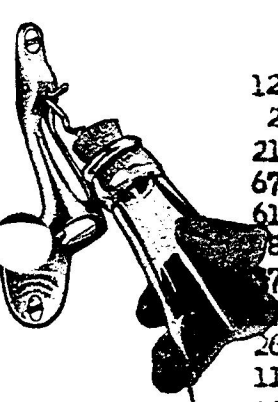
Mavis 15
 Coca-Cola 20
 Whistle 72
 Orange Crush 600
 Nehi 150
 Plain Nickel plated 1466 (56 of these are nickel buffed)
 Plain Chrome plated 24
 Lime Cola 2
 Icy O 177
 Big Boy 155
 Old style white rock 2
 Sagertown 108
 Liquid 50 (37 regular 13 buffed)
 Carta Blanco 28

Misc. Openers (No good)



Milk bottle openers 432
 Kelvinator 1555

Starr X



11 Beauford gingerale
 1 Old style delaware punch
 3 Glasco cooler
 5 Frigidaire
 117 Acme Beer
 5 Pilsen Colla
 5 Grand Prize Lager Beer
 5 Grand Prize Texas Largest seller
 125 Sterling
 20 White Rock new style
 219 Miller High Life
 673 O Crush
 618 Polar
 88 Regal Pale
 70 Royal Crown
 23 Pepsi Cola
 265 Grosley
 117 Icy O (old style)
 452 Sabst

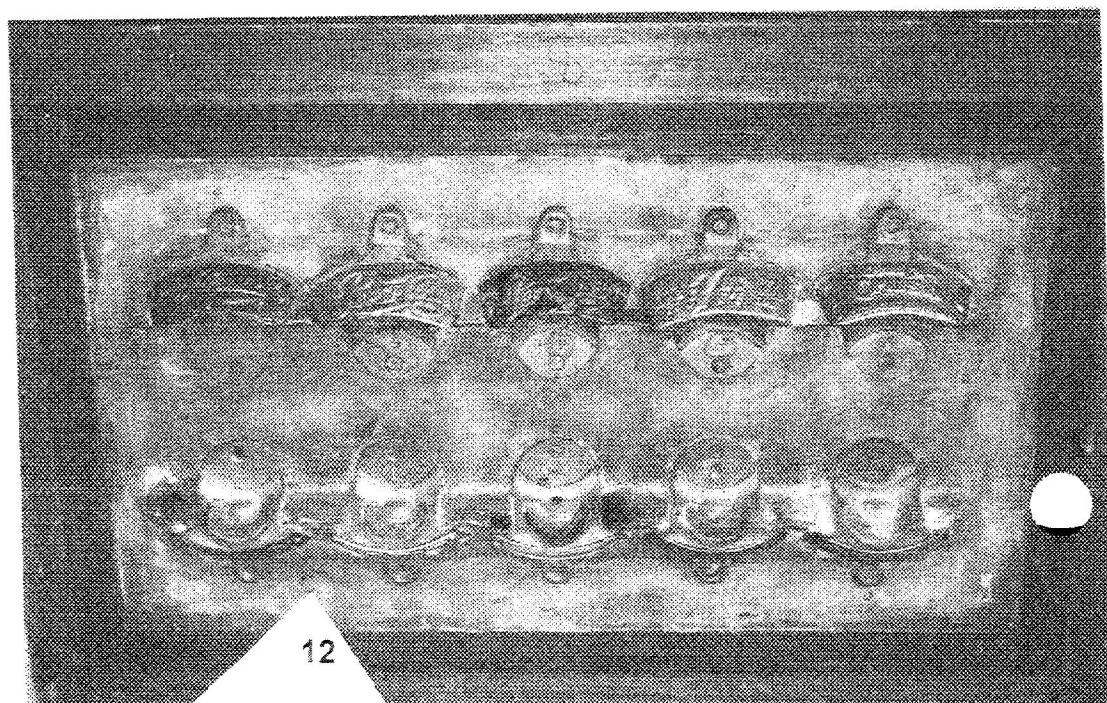
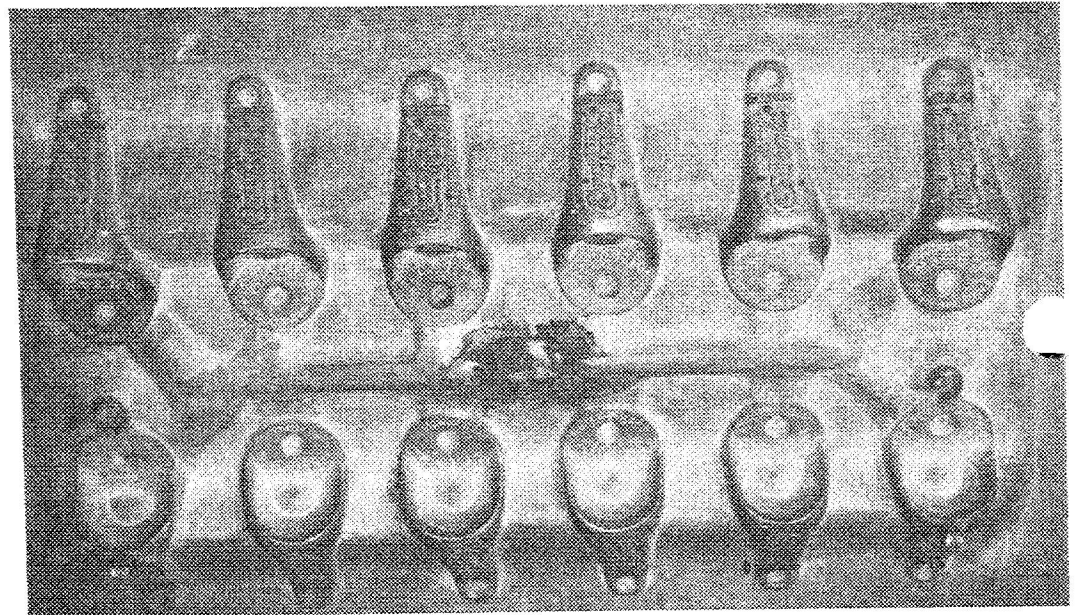
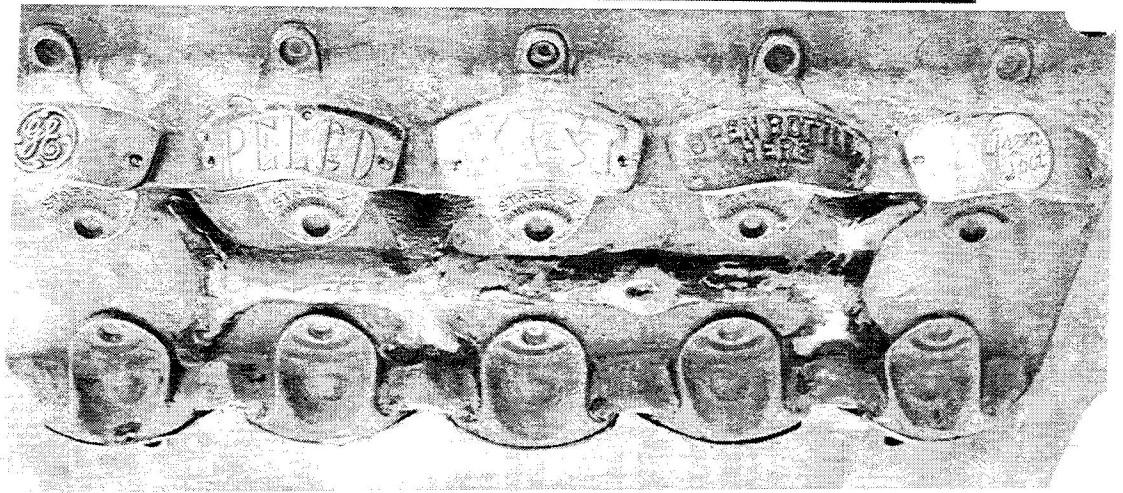
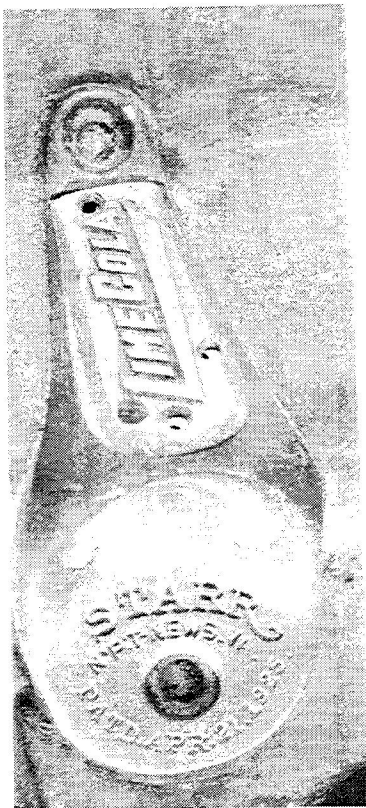
STARR X PAGE -2-

54,398 Coca-Cola (also 14,000 disc.
 2,200 Open Bottle Here
 17,890 Starr X Tone
 452 Lucky Lager
 118 Felco
 51 Sindral Mandet
 840 Three Line (111 nickel 72 buffed)
 1,127 Plain O 1100 buffed 27 regular)
 1,095 General Electric
 15 Dr. Pepper
 12 Nehi
 702 Old style Liquid
 1,712 New style Liquid
 228 Rock Spring
 1,172 1,1192 Cervex Caracas

Corkscrew Combination

948 Iron nickel old style
 21 White Rock brass new style (19 chrome
 12 Samuel Lewis Chrome new style
 45 United Hotel old style nickel
 21 Drink CC Chrome new style
 9 Drink CC Chrome old style
 4 Plain Chrome new style
 2 Lord Nelson Iron nickel old style
 3 Canada Dry Iron Nickel old style
 3 Mavis Iron Nickel old style
 17 Plain Iron nickel old style
 3 Plain Chrome iron old style

Starr-X Openers by Brown Manufacturing of Newport News, VA (Continued)



Spouse's Corner

by Pat Stanley, the Editor's Spouse

John, do I really have to stop working on income taxes and stop working on packing up the entire house before the new carpet arrives to be installed, to write my column? I was having so much fun!

If April is really almost here, I better get off the whirlwind and reminisce some more with you, down "Opener Memory Lane".

At one point in time, I thought another type I wrote about was his favorite, but I should have known that the true favorite is the A-34, the Fancy Powderhorn. You see, about six years ago, another decorative stamper told me that she could get a rubber stamp made up if I gave her a copy of an opener. I remember well the Saturday John and I had lunch at one of his old college hang-outs in Raleigh, then stopped by a copier shop down the street. A color copy would be best. After some trials and errors, we left with a fairly decent copy. The stamp detail is great and does well if you don't apply excessive ink to it.

I was reminded of that day recently when I brought home a color copier. Guess who used it first? Guess who was watching him gently lay metal on the new glass???

After our weekly trip to a Japanese restaurant tonight, we sat down to talk about the 7 Powderhorns he has on a chain. (Notice, we always have to eat before openers, except at convention, when eating is an unfortunate necessity.)

The first Powderhorn he had was traded to Jack Ford. This was the first trade he ever made with a JFO member. It was from a Saloon in Orange, Texas. He found it at a flea market in Charlotte, NC and traded it to Jack for an A-1 and something else, something that he can't remember since the trade was in 1983. John's getting older and a little rusty. We will get out the brillo pad and renew him.

Next he got a Salesman Sample and he can't remember where he got that one (now I'm beginning to worry about him), but he did get a second one like it from Bob Stahly.

The A-34-3, "Do You Drink Gilt Top or Just Near-Beer?" came from Bill Ennis who left the trade with 5 sodas.

The A-34-4 "Drink Gold Top Old Top That's the Beer" was purchased from Ray Brauener for \$100 probably about 10 years ago (from my memory...when he was buying a lot from Ray). And what's it worth now, John? Pause....a \$100.

Somewhere around 1987 or '88 John received an invoice from Lynn Geyer's auction billing him \$71 for the A-34-5 "Reading Beer A.E. Bair, AGT. Hagerstown, MD". Three days later he was told that an error had been made, another bidder won the item for \$84. In 1993, John and Roger Jarrell went down to the Carolina coast, to see Marc Benjamin. There it was! He was the winning bidder. The next year they returned to Marc's and a big trade was negotiated. John brought home the Powderhorn and Marc got an A-22-1 "Ballantine's Export Beer / Ballantine's Brewery Newark, New Jersey" as part of the deal. This A-34-5 was in mint condition.

Spouse's Corner (Continued)

About three years later he got another A-34-5 (didn't ask how and now, you guessed it, he's asleep). He never did find another A-22. Guess that's on his wish list. He traded the 2nd A-34-5 to Ben Hoffman for a Coca Cola B-32. John also gave Ben Hoffman \$50 for a A-34-2 "7th St. Malt Co. Phone 4350 117 No. 7th St. Allentown, PA.",

The last beer A-34, the A-34-1 "Drink A-R-R-O-W It Hits the Spot K & S Co." was acquired in the Big Trade with Norm Jay at the 1996 Chicago Convention. See the July 1996 issue for that tale. Norm probably came out ahead, since he was the Convention Host and probably reminded John of that through however many days it took to complete the transaction.

At the same convention, John traded a N-8-2 "Haberle" with Don Whelan for a soda Powderhorn "Rivo Products Co. Rivo Cola, Hires Welchade and Ginger Ale Louisville".

When asked about the manufacturer of the A-34, John picked up the color proof of the Opener Book, soon to be available for sale. While he was studying that I wrote down the patent date 4-28-14 stamped on an opener in my interview notes. Then he announced the patent date is 4-14-14. Sorry John, the book is wrong. Bull should have caught that!!! Check your handbook and you will see that 4-28-14 is stamped on the opener, but the Design Patent No. 45,678 is dated 4-14-14. What's two weeks 85 years ago?

Well, I must close and give some attention to Corkie. Today is the last day of the "terrible twos". Tomorrow, March 26th, she will be three. She is indeed, a classic, valuable "Corkscrew". She had a patent on how to completely wrap us around her paw from the moment we saw her.

After the carpet is installed and boxes unpacked, we will be packing suitcases to head for Naples, Florida. This year my Dad and his wife Mary will be at the Convention a couple of days, driving down from the East Coast of Florida to be with us. I am very pleased that they will be there. They always seem to enjoy looking at John's collection. Now they will know that he is not the only person in the world collecting openers.

As Ollie Hibbeler says, "You Be There"....Where? Naples, Florida!!!!

New E-Mail Addresses

John Bitterman	jebitter@aol.com
Lew Burritt	dixieman@earthlink.net
John Cartwright	jcartwright@tcsn.net
Paul Gauvin	mtkneo@aol.com
Tom Gormally	william.gormally@get.net
Ollie Hibbeler	hibol@lakeozarks.net
Harry Horn	rosemh@jps.ent
Art Johnson	eejaf@naples.infi.net
Hugh Preacher	Inusgmac.hpreac01@eds.com
Tony Zanghi	anthony.zanghi@conrail.com

YOUR E-MAIL ADDRESS COULD BE HERE

AUCTION NEWS

Lynn Geyer's "Advertising Auctions". Main emphasis is on Breweriana (some openers). Cost is \$25.00. Advertising Auctions, 300 Trail Ridge, Silver City NM, 88061 (505) 538-2341

Fink's Off The Wall Auctions. Main emphasis is on Breweriana (some openers). The cost is \$25.00. Finks Off The Wall Auctions, 108 E. 7th St., Lansdale PA, 19446 (215) 855-9732

Nationwide Ad Auctions. Main emphasis is on Breweriana (some openers) and also separate Soda Auctions. The cost is \$13.00. PO Box 30244 Mesa AZ 85275-0244 (602) 807-3609

OTHER CLUBS (and JFO)

American Breweriana Association (ABA) offers a magazine (American Breweriana Journal) 6 times a year on breweriana collecting and an annual convention. Dues are \$25.00/year. Contact Chris Galloway, Recording Secretary, P.O. Box 11157, Pueblo CO, 81001

Canadian Brewerianist offers 5 issues per year (The Canadian Brewerianist) on Canadian Breweriana collecting and an annual convention. Dues are \$12.00/year (US Funds). Contact Loren Newman, 2978 Lakeview Trail, Bright's Grove, Ontario, CANADA, N0N 1C0

Canadian Corkscrew Collectors Club (CCCC) offers a quarterly newsletter (The Quarterly Worme) on corkscrew collecting & an annual convention. Dues are \$30.00/year. Contact Milt Becker, PO Box 9863, Englewood NJ, 07631

East Coast Breweriana Association (ECBA) offers a quarterly newsletter (The Keg) on breweriana collecting and an annual convention. Dues are \$20.00 per year. Contact John Stanley, PO Box 64, Chapel Hill NC 27514-0064
MICROBES (Micro Chapter ECBA): offers a quarterly newsletter on Micro Breweriana. Dues are \$8.00/year. Contact Roger Levesque, PO Box 826, South Windsor CT 06074

Figural Bottle Opener Club (FBOC) offers a quarterly newsletter on three-dimensional and either free standing or wall-mounted openers and an annual convention. A full color guide book is offered for \$28.00. Dues are \$20.00/year. Contact Charles Lesser, 1953 Sugar Stick Rd., Harrington DE, 19952, (302) 284-4792

JUST FOR OPENERS (JFO) offers a quarterly newsletter (with auction) and an annual convention. Dues are \$20.00/year. Contact John Stanley, PO Box 64, Chapel Hill NC 27514-0064

National Association Breweriana Advertising (NABA) offers a magazine (The Breweriana Collector) 4 times a year on breweriana collecting and an annual convention. Dues are \$20.00/year. Contact Robert Jaeger, 2343 Met-To-Wee Lane, Wauwatosa WI, 53226

SHOWS & CONVENTIONS (Sources For Openers and Corkscrews)

1999 Apr 21-25 – 21th Annual Just For Openers Convention – Naples FL– All Opener and Corkscrew Collectors Welcomed . Contact: Bob McNary, 14 Apple Tree Ln, Naples FL, 34112-7203, (941) 774-0472

1999 Jun 16-22 – 18th Annual ABA Convention – St Louis MO – ABA Members Only except for Saturday Public Show . Contact Stan Galloway, Executive Director, P.O. Box 11157, Pueblo CO, 81001

1999 Jul 16-20 – 27th Annual ECBA Convention – Reading PA – ECBA Members Only except for Saturday Public Show . Contact John Stanley, PO Box 64, Chapel Hill NC 27514-0064, (919) 419-1546

1999 Aug 1-3 – 28th Annual NABA Convention – Rochester NY – NABA Members Only except for Saturday Public Show . Contact Robert Jaeger, 2343 Met-To-Wee Lane, Wauwatosa WI, 53226, (414) 257-0158

1999 Oct 7-9 – 17th Annual Midwest Breweriana Show – Holiday Inn Central-Omaha NE– JFO Members welcomed . Contact Heather Hain, 15447 Allan Dr, Omaha NE, 68137, (402) 896-9917

2000 Feb 12-15 – 21th Annual Blue & Gray Breweriana Show – Fredricksburg VA – All JFO Members Welcomed . Contact: John Fisher, PO Box 153, Benedict MD, 20612-0153, (301) 274-3340

2000 Feb 28th – 10th Annual Mid-Missouri Mega Meet at Holiday Inn Columbia, MO. 140+ Tables of Breweriana (Saturday Only Show). Contact Bruce Mobley, PO Box 163, Macon MO, 63552-0163, (660) 385-6256

WANTED (Please remember there is no charge for Ads)

Canadian Openers and Corkscrews: Bring All to JFO Naples Convention In April. Larry Sherk will be there.

Members to Swap Openers for Openers, Trade List for Trade List. People who are starting out like myself who want to build their collections from other members in different parts of the country.
Write or Call Scott Sherman, W5268 Quarry Rd Appleton, WI, 54915, (414) 954-1168

Golden Glow Openers: A-1-9, B-23-149, E-14-787, O-4-22 & A-12-12 Grace Bros. Also any Breweriana from Rainier Brewing Co (Seattle WA, LA CA, SF CA), Golden West Brewing Co of Oakland, CA & Port Townsend Brewing Co. of Port Townsend, WA. Buy or Trade. John Cartwright, 17 Flag Way, Paso Robles, CA, 93446, (805) 226-9270

Please Help Me Upgrade My Collection. How? Will trade my poor condition A-9-15 Excelsior, A-9-32 Fried and A-9-33 Rainier for your good or better ones---and \$\$\$C-A-S-H\$\$\$.
Ed Kaye, 7077 Cedarhurst Dr, Fort Meyers, FL, 33919, Call Collect (941) 590-3068

Any: A-34 (Beer or Non-Beer), Beer: A-42, B-6, B-7, B-22, B-31, G-5. Soda Openers (Esp Dr Pepper, Coca-Cola, Nehi, Pepsi-Cola). B-9-2 Salinas & B-9-5 Mineral Springs. E-17-1 American, E-17-7 I.S.D. Sioux City, E-17-9 Everett, E-17-12 Lion. H-1s: 8,9,12,21,23,24,26,27,31,34,35,39,42,44. O-1: 1,2,3,5.
Write for latest trade list. John Stanley, PO Box 64, Chapel Hill, NC 27514-0064, (919) 419-1546

A-22-1 Ballantine. Great Trades Available. Jack Ford, 5351 Boyd Ave, Oakland CA, 94618, (510) 655-5393

A-42 "Drink Grand Island Special None Better" & P-8 Corkscrew "Omaha Brewing Association" (Excellent Condition Only). Will purchase outright. John Mlady, 1506 S 25th St, Omaha NE, 68105-2611, (402) 345-7909

A-43-Dixie Beer & N-15 Bud Knife. Want to buy straight out.
Marc Benjamin, 167 Nixon Beach Rd, Edenton NC 27932, (919) 482-2099

B-45, B-66, I-7, P-72, P-100, R-14 types with a Corkscrew (Beer/Non-Beer) and Silver Top Beer Openers.
Herb Danziger, 550 Cherry Ct, Birmingham, MI, 48009-1459, (810) 646-9470

Beverwyck-B-18-499, B-21-147, C-10-48, E-9-87, F-6-87, I-2-2, I-14-1, J-5-5a, Dobler-I-11-232, I-18-6, Fitzgerald-C-20-12, I-12-23, I-18-9, Hedrick-E-9-55, Hinckel-P-30-1, Quandt-P-8-118, P-35-2, Stanton-A-20-13, C-12-103, C-18-24, Isengart-E-8-59, Stoll-B-18-380, E-8-107, Misc-A-28-40. Want to Buy.
Bill Laraway, 627 Kenwood Ave, Delmar, NY, 12054, (518) 439-2739

Bond and Lillard Openers (would like to buy). Have A-29, would like any others. Lillard is a family name.
George Love, 4301 Forest Plaza Dr, Hixson, TN, 37343, (423) 877-6006

C-2-6 Valley Forge, B-28 Howell & King, B-37 DuBois, and F-16 Wacker. Cash or Trade.
My A-11-1 Wooden Shoe (EX) for Harley-Davidson Bike and Goodyear Airplane Figurals.
Tony Zanghi, 2225 Deer Trail Rd., Coopersburg, PA, 18036, (610) 346-8232

"E"s! Have Trade List (various types) to send for "E"s that I need or will buy.
Larry Moter, 10149 Michaels Rd, Woodford, VA, 22580, (804) 448-3928

E-2-19 Yuengling Por-Tor (Will trade heavy for this opener or pay cash).
Harold Queen, 1001 Centre Ave, Jim Thorpe, PA, 18229, (717) 325-2612

"E" Type Openers Wanted. Will Trade my "C", "E" and "I" Types. Please send list of what you have and I'll send my list. Ralph Tewksbury, 84 Wildwood Dr, Parkersburg, WV 26101 (304) 863-3627

"E" List-Extensive-For Trade or Sale. Send Me Your List and Maybe We Can Work a Sale or Trade.
Tom Gormally, 100 Nelson Pl, Westfield, NJ 07090, (908) 233-8867

H-8-5 Esslinger "Little Man Standing", H-8-19 Atlantic (Beer Garden Scene), and L-1-8 Manns. Have some traders. Harry Horn, 3113 Smoky Ct, Sacramento, CA, 95826, (916) 362-3590

I-7 Beer or Non-Beer Openers. I'm interested. Extensive trade list or cash.
Hale Milano, 506 Springhouse Road, Camp Hill, PA, 17011-1454, (717) 737-5067

M-3s #40,23,24,25,41,26,39,33,36,34,42,37,6,43 Non-Beer M-3s #2,5,6,7,8,9,13,14,16,17,19,20,21,22,23,25
Vic Keown, 10547 Mert Ave, Saint Ann, MO, 63074, (314) 428-6343

WANTED (Continued) (Please remember there is no charge for Ads)
--

O-5 Openers/Send for list-Buy/Trade.Top \$\$\$. Steve Owen, 1175 Elkins Lake, Huntsville, TX 77340 (409)295-3329

Interested in obtaining **Breweriana of Stag Beer, brewed in Belleville, IL.**
Also interested in obtaining Beer Tap Handles (Markers) for collection I share with my grandson.
Jack Westall, 5945 Shallow Creek Dr, Milford, OH, 45150, (513) 248-1127

P-19-10 Kalispell, P-18-3 Washoe, P-31-6 Eureka, Purchase or Trade. Have P-19-2 Townsend, M-73 Highlander Sliders (Red), and many other P's for trade. Bill Pattie, 37050 SE 89th St., Snoqualmie, WA, 98065, (206) 888-2496

P-20-2 Valley Forge (have L-2-1 and L-2-2 Anheuser Busch for trade or sale). Also M-3-27 Trommers, M-3-39 Hialeah, M-3-42 Seitz. Ben Hoffman, 213 Simmons Rd, Perkiomenville, PA, 18704, (610) 287-8243

Cigar Box Openers: SHM-2,8,10,11,13,14 DHM-13,14,15,16 RBO-3,9,12 HOR-2,3 RND-6,8,9,10 SQR-1,4 NL-6 BB-1,6,19 BUT-2,4 PKT-1,5,6,8,9,10 SEP-2,6,7,8,9 MIS-4,6,7,10,11. Will purchase or trade from 600+ collection. (Types from the Cigar Box Opener Handbook copies available from Mike for \$3.00 which includes mailing) Mike Schwimmer, 325 E. Blodgett Ave., Lake Bluff, IL, 60044-2112, (847) 295-1901

Looking for "E" & "I" & Other Beer Openers to rebuild my collection. Will buy or trade for beer openers, cigar box openers, non-beer openers. Send for my list of "oddities".
Glen Enloe, 805 Teepee Dr, Independence, MO, 64056, (816) 796-9965

Connecticut Openers Wanted: Write for want and trade lists.
Paul Gauvin, 24 Strawberry Ln, Manchester, CT, 06040, (860) 646-9722

Corkscrews-Cork Pullers-Syroco (especially Golden Knight and Clown)-Early US Patents-Anything Unusual. Pay competitive price in trade or cash. Have many corkscrews to trade. Please send description, sketch, photocopy, etc to Paul Luchsinger, 1126 Wishart Place, Hermitage, PA, 16148 (Tel/Fax 724-346-2331)

Corkscrews and Tin Can Openers: Have Beer Openers for Trade.
Joe Young, 36 S. Weston Ave., Elgin, IL, (847) 695-0108

Corkscrews, Beer Advertising Letter Openers, Beer Advertising Knives, & Postcards depicting Corkscrews. Please send description, photo, sketch, photocopy, or tracing of what you have and advise price wanted.
Don Bull, PO Box 596, Wirtz, VA, 24184, (540) 721-1128

Corkscrews: Esp. Figural, Syroco, Thomason, Bakelite; also Wine Ephemera (Ads, Postcards, Labels, Grape Box Labels, Etc.); and Bakelite Anything. Buy Straight Out.
Abby Nash, 172 Bush Lane, Ithaca, NY, 14850, (607) 266-0690

Corkscrews: Esp. Walker's "Waiters & Hallboys" and old Williamson wire shafted "T"s with attachments to wood handle (such as brushes/wire cutters). John Vlossak, 1044 East Eldorado St., Appleton, WI, 54911, (414) 739-2789

Dixie Beer Openers: B-19-199, I-11-169, I-12-17, I-22-21, N-2-2. Do they really exist? Wish to purchase.
Lew Burritt, 125 Vogt Dr., Belle Chasse, LA, 70037, (504) 394-3567

From the Enterprise Brewing Co of Fall River, MA: A-20-47, B-18-26, B-21-430, C-12-135, E-13-35, E-14-526, E-14-779, I-11-13, J-1-1, and N-22-1. Dave Dubrul, 88 Linden Terrace, Burlington, VT, 05401, (802) 864-2089

"F" Type Beer Advertising Openers, Beer Advertising Letter Openers, Beer Advertising Match Safes and Beer Advertising Knives (with or without openers on them). Larry Biehl, 448 Crandon, Calumet City, IL, 60409

Idaho & Montana Beer Openers esp. from Kessler Brew Co of Helena, MT & Sunset Brew Co of Wallace, ID. Newer collector looking to expand collection. Steve Armstrong, PO Box 1938, Orofino, ID, 83544, (208) 476-0128

Openers from Jamestown Brewing Co, Kuhn's Beer, Chautauqua Brew, Monessen, PA, Independent Brewing Co, Schaefer, & all Cleveland Beers. Ed Schaefer, 366 Bassett Rd., Bay Village, OH, 44140, (216) 871-0449

Lexington Brewery (Dixie Beer) & Coca-Cola Openers. Want to buy any figurals or unusual older examples of these. Also looking for old manufacturer's brochures or catalogs (originals or copies of).
Thom Thompson, 123 Shaw Ave., Versailles, KY, 40383, (606) 873-8787

WANTED (Continued) (Please remember there is no charge for Ads)

Louisiana Brewery Openers: Old Union, 4-X, New Orleans, Dixie, Regal & Jax.

Ed Broders, 10220 Westwood, Baton Rouge, LA, 70809, (504) 293-2373, ebrowsers@franklin-press.com

"M-1 & M-2" Lithographed Openers (Excellent Condition Only) by beginning collector. Also Openers or Other Related Items to any Jung Breweries. Paul Jung, PO Box 425, Bechtelsville, PA, 19505, (610) 367-0239

New York State Openers: E-4-4 American, E-4-345 Koch, E-14-312 Amsterdam, G-1-67 Hupfel.

Will Buy or Trade. Mark Barren, 6141 Tachi Dr., Newfane, NY, 14108-9517, (716) 778-9724

P-1-2 Anheuser-Busch Corkscrew & \$55 for P-1-10 Highland or P-1-15 Schnaiders or P-1-16 Schoenhofen or P-88-2 Burton or P-88-3 National or P-88-4 Yonkers. Ollie Hibbeler, 298 Highline Road, Lake Ozark, MO, 65049

Spokane, Wash. Brewery Openers & Corkscrews. Have good selection of "A"s, "B"s, and "E"s for trade.

Nick Johnson, 4708 Spiser Ln, Wichita Falls, TX, 76302, (940) 322-1696

TYPES (Beer) A-11,22,36,37,39,40,42,48,49,50,51,53,54,55,56 B-9,26,28,34,37,41,43,44,45,46,48,50,51,61,66,67, 68 C-40,44 D-7,8,10,11,13,14,16 E-26,27 F-11,16,26 G-3,11,19,33,35 H-9 I-25 M-14,22,48,49,50,61,64,65,66,67, 68,69,70,71,72,75,76,78,79,80,84,85,86,87,88,89,90,91,92,93,94,95,96,97 N-1,7,15,16,18,19,21,28,45,46,55,57,70 O-6,12,13 P-11,12,21,30,65,67 R-6,8,10. Gary Deachman, PO Box 438, North Woodstock, NH, 03262

WASHINGTON D.C. Openers and/or Corkscrews. Also figural corkscrews.

Sandra Emme, PO Box 1454, Upper Marlboro, MD, 20773, (301) 627-8207

West Virginia Openers (B-7-12, B-18-110, and H-4-3), also Southern US Beer openers and corkscrews.

Roger Jarrell, 1500 Sedwick Rd., Durham, NC, 27713, (919) 544-7787

Wooden Shoe (Minster, Ohio) and Sebald (Middletown, Ohio) Brewery Items.

Jim Stork, 7504 Parliament Crt, West Chester, OH, 45069

SELLING (Please remember there is no charge for Ads)

Selling Wisconsin Collection. 2 "B"s, 20 "C"s, 8 "D"s, 46 "E"s, 5 "F"s, 9 "G"s, 6 "H"s, 53 "I"s, 4 "J"s, 1 "L"s, 2 "N"s. Send SASE for List. John Archer, 353 Concord Dr, Oregon, WI, 53575-3616

Selling my "I" Collection. 30 for \$10 plus \$2 shipping. Will send openers requested. If openers not available I will send balance of openers by random selection from existing stock.

H. Keith Halverson, 1528 W 21st St, Merced, CA, 95340-3430

"Openers (Beer and Otherwise), Corkscrews and Figurals For Sale". Send SASE (2 Stamps Business Size).

Carl T. Jantos, 7025 Kevin Drive, Bethel Park, PA, 15102-3913

Beer and Soda Openers For Sale. Send SASE for List. John Fisher, PO Box 153, Benedict, MD, 20612-0153

All Sales (Add Postage) L-12-1 Budweiser \$5, L-12-UL Bud Light \$5, L-ND (Penguin) Bud Ice \$5, Q-27-15 Budweiser, Q-27-UL Bud Light, Q-27-UL Busch, Q-31-42,61,62, Q-36-23, Q-36-UL Natural Ice All \$1 Each, Q-45-UL Budweiser, Michelob, O'Douls \$3 Set of 3, Q-53-1,2,3,4,5 \$10 Set of 5, Q-ND Round Twist Off-Budweiser, Bud Ice, Bud Light, Busch \$3 Set of 4, Cigarette Lighter & Opener-ND Lite, Miller, Red Dog, Miller Genuine Draft \$8 Set of 4. Art Santen, 6126 McPherson, St Louis, MO, 63112

"American Breweries II": by Dale Van Wieren. Over 18,000 entries for nearly 8,000 brewing firms, tracing names, addresses, and dates of operation. (\$28 1st Class). John Stanley, PO Box 64, Chapel Hill, NC 27514

1999 Handbook of United States Beer Advertising Openers and Corkscrews. \$22 sent priority mail.

1999 Handbook of United States Beer Advertising Openers and Corkscrews (no picture type section) . \$15 sent priority mail. John Stanley, PO Box 64, Chapel Hill, NC 27514

"Just For Openers" "A Guide to Beer, Soda, & Other Openers" by Schiffer Publishing, 160 Pages, Over 300 Color Pictures, \$23.95 plus \$3.20 shipping (US Only). The Bullworks, PO Box 596, Wirtz VA, 24184

Results of January 1999 JFO Auction Closing February 17, 1999

1	A-001-008	GLOBE	11.65
2	A-001-024	GRAFS LEMON-LIFE	15.00
3	A-009-999	SCHUSTERS ROOT BEER	60.11
4	A-013-999	SCHWINN SHOES	15.10
5	A-021-112	MANHATTAN BOT	10.10
6	A-042-007	HOSTER-COLUMBUS	56.00
7	B-006-999	MUELLER FURNACE	15.50
8	B-013-083	MUEHLEBACH NEW-BREW	25.00
9	B-018-090	BIG CHIEF	6.11
10	B-018-132	BLATZ	5.00
11	B-018-280	HOSTER-COLUMBUS	18.80
12	B-018-390	ENGESSER	18.80
13	B-018-543	HUPFEL	40.00
14	B-018-999	RED ROCK GINGER	12.11
15	B-018-999	FRANCIS DRAKE GINGER	12.11
16	B-018-999	GOLD TOP GINGER	12.11
17	B-019-128	HUEBNER	12.00
18	B-019-138	SEATTLE	12.00
19	B-019-163	WILLOW SPRINGS	10.00
20	B-019-170	MINNEAPOLIS	10.00
21	B-019-231	PLYMOUTH	20.00
22	B-021-032	HUEBNER	12.00
23	B-021-041	INDIANAPOLIS	5.00
24	B-021-169	INDIANAPOLIS	18.80
25	B-021-186	NORTHERN	12.50
26	B-021-200	PROVIDENCE	6.11
27	B-021-212	STAR	15.00
28	B-021-243	EXCELSIOR	14.00
29	B-021-266	KOCH	7.51
30	B-021-268	KRANTZ	15.00
31	B-021-292	OLYMPIA (338)	18.80
32	B-021-443	GARDEN CITY	40.00
33	B-021-999	REINERS BOT	10.00
34	B-021-999	OWEN SPRING WATER	10.00
35	B-022-004	FALSTAFF	11.00
36	B-022-045	INDIANAPOLIS	14.00
37	B-022-055	AMERICAN	20.13
38	B-022-065	INDIANAPOLIS	18.80
39	B-022-072	P.O.C.	12.00
40	B-023-062	BRUCKMANN	15.00
41	B-023-089	JETTER	10.60
42	B-024-057	ACME	12.79
43	B-025-002	BUCKEYE	26.00
44	B-030-002	CAPITOL	33.77
45	B-031-999	HAGSTROM SPARK PLUG	25.00
46	B-032-999	UTE CHIEF MANITOU	42.71
47	B-035-999	GREENLAKE BILLARDS	8.00
48	C-011-026	WAYNE	8.69
49	C-012-030	VICTOR	10.69

50	C-012-034	ALPEN BRAU	6.33
51	C-012-121	HOP GOLD	15.00
52	C-012-124	KING	10.69
53	C-012-125	KNAPSTEIN (Tie Bid)	5.00
54	C-012-129	RIVERVIEW	6.60
55	C-013-028	EBNER	25.00
56	C-013-071	MILLER	2.15
57	C-013-079	ORTLIEB	6.00
58	C-013-121	ALPEN BRAU	8.69
59	C-013-132	GEM	5.00
60	C-013-172	EMPIRE	11.25
61	C-013-173	FALLS CITY	8.75
62	C-013-179	KEWAUNEE	40.00
63	C-013-224	MICHEL	40.00
64	C-013-251	CREAM CITY	6.00
65	C-014-029	KINGS	15.00
66	C-018-004	INDEPENDENT	4.15
67	C-019-002	FORT PITT	4.00
68	D-001-001	A.B.B.ASS'N	6.00
69	D-001-033	EDELWEISS	10.05
70	D-003-020	MILLER	15.00
71	D-006-001	BRUCK	5.00
72	D-017-001	ROLLING ROCK	10.00
73	D-999-999	DIXIE HATCHET	0.50
74	E-001-019	CAPITOL	9.50
75	E-001-032	JOLIET CITIZENS	4.00
76	E-002-011	STAR BEV	14.69
77	E-003-043	BANKERS	7.53
78	E-003-045	CALIFORNIA	12.50
79	E-003-066	STUTZ BEER	7.01
80	E-004-001	ACME	5.00
81	E-004-005	ARROW	4.00
82	E-004-011	BERGHOFF	4.00
83	E-004-014	BLATZ	4.00
84	E-004-021	CENTLIVRE	2.09
85	E-004-033	FALLS CITY	4.00
86	E-004-038	GLOBE	4.00
87	E-004-040	GOLDEN WEST	4.00
88	E-004-047	HUDEPOHL	4.00
89	E-004-048	HUMBOLDT	1.39
90	E-004-053	LANG	5.00
91	E-004-055	LION	4.00
92	E-004-057	MANHATTAN	1.15
93	E-004-068	PRIMA	4.00
94	E-004-071	RAINIER	1.15
95	E-004-077	ST. CLAIR	5.00
96	E-004-093	WAGNER	3.00
97	E-004-095	WEHLE	2.65
98	E-004-101	AMERICAN	22.69
99	E-004-104	BURLINGTON	1.26
100	E-004-105	CALIFORNIA	4.00
101	E-004-114	FREDERICKSBURG	15.00
102	E-004-117	GOETZ	5.00
103	E-004-121	HUMBOLDT	5.00
104	E-004-126	LUCKY	5.00
105	E-004-129	PABST	2.15
106	E-004-137	RENNER	6.00
107	E-004-172	HOFFMAN BEV	6.00
108	E-004-282	SCHMIDT	5.00
109	E-004-296	WIELAND	6.00
110	E-005-002	ESSLINGER	15.00
111	E-005-010	LATROBE	7.65
112	E-005-999	BANKO	7.10

113	E-005-UL	GRAPEFRUIT CHAMPAGNE VELVET	15.00
114	E-005-UL	BUDWEISER-FORT PITT	30.00
115	E-006-003	BANKER	4.00
116	E-006-019	EAGLE	10.69
117	E-006-020	EASTSIDE	5.00
118	E-006-022	FELSENBAU	3.00
119	E-006-023	FESENMEIER	4.13
120	E-006-024	FLOCK	5.30
121	E-006-031	HOFFMAN	4.53
122	E-006-032	HORTON	1.15
123	E-006-035	KRUEGER	4.00
124	E-006-045	ROCHESTER	11.00
125	E-006-051	SUNSHINE	4.00
126	E-006-055	VICTOR	4.00
127	E-006-056	WAGNER	8.00
128	E-006-064	BLESER	5.00
129	E-006-067	BURKHARDT	4.13
130	E-006-068	COLUMBIA	5.00
131	E-006-069	COOPER	4.00
132	E-006-071	DIEHL	6.00
133	E-006-072	DUQUESNE	8.69
134	E-006-078	LUCKY	4.13
135	E-006-079	MINNEAPOLIS	8.69
136	E-006-086	RENNER	6.00
137	E-006-093	WIELAND	6.00
138	E-006-096	BURGER	8.00
139	E-006-098	DUQUESNE	8.69
140	E-006-103	FOX HEAD	4.13
141	E-006-105	GOETZ	4.13
142	E-006-112	LONDON BOBBY	10.00
143	E-006-117	MOOSE	14.00
144	E-006-127	WALTER VAR (A)	6.00
145	E-006-144	MONARCH	15.53
146	E-007-002	BURKHARDT	5.00
147	E-007-039	SWEETWATER	22.69
148	E-008-015	CLEVELAND & SANDUSKY	14.69
149	E-008-069	ATLAS	8.69
150	E-009-001	ANHEUSER-BUSCH	5.00
151	E-009-010	GUTSCH	5.03
152	E-009-012	HORLACHER	5.00
153	E-009-014	KRUEGER	6.00
154	E-009-028	EASTSIDE	3.15
155	E-009-029	EASTSIDE	6.00
156	E-009-038	KRUEGER	10.69
157	E-009-041	RAINIER (Tie Bid)	6.00
158	E-009-043	RUHSTALLER	3.48
159	E-009-045	SAN ANTONIO	5.01
160	E-009-056	HIGHLANDER	4.13
161	E-009-065	WAGNER	8.69
162	E-009-085	WIELANDS	8.69
163	E-009-103	NEW ORLEANS	7.50
164	E-009-999	PHILLIPS BROS GINGER	5.00
165	E-013-021	WARSAW	6.57
166	E-014-015	BAVARIAN	4.00
167	E-014-059	DICK BROS	1.65
168	E-014-072	EFFINGER	7.73
169	E-014-192	MONTEREY	12.50

21st Year, Issue #82

170	E-014-214	PEERLESS	4.00
171	E-014-215	PEOPLES	12.63
172	E-014-216	PEOPLES	5.00
173	E-014-219	PHOENIX	15.00
174	E-014-220	PICKWICK	12.63
175	E-014-221	PIEL BROS	7.73
176	E-014-222	PIELS	7.73
177	E-014-225	POTOSI	1.50
178	E-014-227	R & H	12.63
179	E-014-228	RAINIER	2.05
180	E-014-230	RAMS HEAD	3.09
181	E-014-232	RED TOP	7.01
182	E-014-235	REGAL	5.00
183	E-014-237	REGAL	4.00
184	E-014-239	RENNER	4.05
185	E-014-240	RENNER	10.69
186	E-014-241	RHINELANDER	5.00
187	E-014-245	ROYAL 58	16.00
188	E-014-246	RUPPERT	5.26
189	E-014-248	SALINAS	20.00
190	E-014-289	UNITED STATES	4.00
191	E-014-295	WALTER	4.00
192	E-014-325	BOBBIE	10.69
193	E-014-343	COOPER	4.05
194	E-014-377	HAMMS	4.00
195	E-014-382	HOHENADEL	7.73
196	E-014-416	OLD VIENNA	12.63
197	E-014-422	POTOSI	10.69
198	E-014-425	PRIMO	5.03
199	E-014-429	REGAL	4.00
200	E-014-436	SAN MIGUEL	4.00
201	E-014-442	SOUTHERN	13.63
202	E-014-450	UNITED STATES	10.69
203	E-014-530	OSHKOSH	4.09
204	E-014-534	PRIMO	7.73
205	E-014-536	RAINIER	10.00
206	E-014-538	REGAL	7.73
207	E-014-547	SHELL	21.25
208	E-014-555	STAG	4.00
209	E-014-576	ZIEGLER	14.69
210	E-014-580	AMERICAN	4.00
211	E-014-610	GUNTHER	12.63
212	E-014-677	PILSEN	11.00
213	E-014-689	GIPPS	14.50
214	E-014-695	REGAL	7.73
215	E-014-696	ROYAL BOHEMIAN	7.73
216	E-014-713	PILSENER P.O.C.	8.00
217	E-014-725	KUEBLER	8.69
218	E-014-726	PICKWICK	4.00
219	E-014-727	RAINIER	9.50
220	E-014-745	RENNER	5.00
221	E-014-770	COLD SPRING	12.63
222	E-014-796	HUDEPHOL (NOTE SPELLING)	27.75
223	E-014-808	PICKWICK	12.63
224	E-016-007	FINK	20.69
225	E-999-999	E-11-7 KAIER E-14-133 HAMMS E-14-999 SQUIRT	2.65
226	F-002-009	SOUTH BETHLEHEM	6.79
227	F-002-014	INDEPENDENT MILWAUKEE	20.00
228	F-002-036	MITCHELL	15.79

JUST FOR OPENERS

229	F-006-014	WIELAND	8.00
230	F-027-004	PEERLESS	41.50
231	G-001-026	YOERG	20.00
232	G-001-033	KINGS VAR (A)	10.13
233	G-001-037	METZ	8.01
234	G-001-038	POTH	6.88
235	G-001-043	JAX	12.69
236	G-001-044	KEELEY	4.65
237	G-001-051	LUBECK	10.01
238	G-001-052	PILSER	15.50
239	G-001-062	KESSLER	15.50
240	G-004-003	FREDERICK	13.00
241	G-004-007	MILLER	5.13
242	G-004-010	JUNG	10.50
243	G-005-016	FISHER	5.13
244	G-008-007	MARATHON CITY	5.00
245	G-009-018	SCHMIDT	18.00
246	G-009-044	SCHMIDT	21.00
247	G-009-079	PICKWICK	4.09
248	G-009-086	GLOBE	19.00
249	G-012-007	PABST	9.00
250	H-001-005	HOFF-BRAU	5.26
251	H-002-001	AMERICAN	8.69
252	H-002-007	BURGER	3.15
253	H-002-009	CARNEGIE	4.00
254	H-002-022	HANLEY	4.00
255	H-002-032	PIEL	6.86
256	H-002-035	SCHMIDT (Tie Bid)	4.00
257	H-002-036	SCHMIDT	5.00
258	H-002-037	SCHMIDT	0.11
259	H-002-038	STEGMAIER	4.00
260	H-002-039	TECH	5.00
261	H-002-040	TERRE HAUTE	1.65
262	H-002-055	BLATZ	3.00
263	H-002-071	QUEEN CITY	5.00
264	H-002-080	FESSENMEIER	8.69
265	H-002-103	ERIN BREW	7.00
266	H-002-145	CHARTIERS VALLEY	6.30
267	H-002-152	DICK	11.50
268	H-006-005	PABST	5.00
269	H-006-006	SCHLITZ	15.69
270	H-007-009	POTOSI	8.75
271	H-008-007	GRIESEDIECK BROS	40.13
272	H-008-010	NARRAGANSETT	30.51
273	H-008-015	SCHLITZ	6.65
274	H-008-018	NARRAGANSETT	40.13
275	H-008-019	ATLANTIC	68.00
276	I-007-001	ACME	7.51
277	I-007-003	AMERICAN	10.51
278	I-007-011	CROFT	5.22
279	I-007-014	FEIGENSPAN	9.87
280	I-007-049	DOELGER	14.22
281	I-007-059	SCHAEFER	11.13
282	I-007-060	STORZ	10.77
283	I-007-066	IRON CITY	9.87
284	I-007-072	TROMMER	6.50
285	I-008-001	FOX	5.51
286	I-021-001	STEGMAIER	11.13
287	I-024-001	FOX DELUXE	24.13
288	J-009-003	SCHLITZ	15.60
289	J-010-001	PABST	17.13
290	J-011-001	SCHLITZ	2.65
291	K-001-001	OLD	40.00

April 1999

		MILWAUKEE	
292	K-002-003	JACKSON	12.65
293	K-002-006	PEARL	37.50
294	K-005-003	PABST	10.50
295	M-003-999	1933 CHICAGO	13.78
296	M-003-999	INDEPENDENT TOWEL	12.00
297	M-003-999	UNITED MERCANTILE	10.00
298	M-003-999	DEWITT HOTEL	5.53
299	M-003-999	A.A.O.N.M.S.	20.00
300	M-004-002	BLATZ (SCRIPT)	8.50
301	M-005-001	TIVOLI	7.77
302	M-006-011	SIGNAL	53.00
303	M-016-001	BUDWEISER	17.71
304	M-025-001	LEMP	25.00
305	M-029-UL	FALSTAFF	20.00
306	M-034-003	MILLER	4.65
307	M-047-001	CROWN CORK AND SEAL	4.00
308	N-009-001	CAMDEN	11.03
309	N-011-003	FALSTAFF	11.03
310	N-011-007	DREWRY'S	12.50
311	N-012-001	BECK	40.00
312	N-018-011	FALSTAFF	26.00
313	O-002-999	SMILE (ORANGE MAN)	12.00
314	O-006-999	STAR AND CRESCENT BEV	12.10
315	P-008-037	SCHOENHOFFEN	9.99
316	P-008-098	MAIER & ZOBELEIN	10.50
317	P-051-999	CALGARY	5.26
318	P-054-012	MONTREAL BRAND MALT	6.65
319	P-103-002	MAIER & ZOBELEIN	61.00
320	Q-008-003	COORS VAR (A)	6.00
321	Q-008-040	BUSCH	20.00
322	R-001-002	INTERNATIONAL	5.03
323	R-004-UL	IROQUOIS INDIAN	30.00
324	R-005-002	CHAMPAGNE VELVET	51.00
325	S-001-001	BURGER	24.75
326	Z-999-999	I & J LOT-126 DIFFERENT MIN \$25	58.65

Thanks to all
52 Bidders

Remember, PLEASE
SEND YOUR BID
SHEETS EARLY

Waiting Until The Last
Minute Does Not Give
You An Advantage

April 1999 JFO Auction-Closing May 19, 1999- Name & Mem #:
--

Send Bids To: John Stanley, PO Box 64, Chapel Hill, NC 27514

Auction Rules (Note: No Phone Bidding)

- 1) \$1.00 Minimum Bid on Each Lot, Only 1 Bid for each Lot Allowed
 - 2) Openers Sold to Highest Bidder, For Identical Bids Earliest Postmarked Bid Wins
 - 3) 7 Days to Return Openers If Not Satisfied, Shipping and Handling Extra
 - 4) Openers Shipped Upon Payment (Please Pay within 7 days of Receiving Invoice)
 - 5) Results Shown Next JFO Issue (Winning Bidders Receive Copy with Invoice)
- Grading (G):** 0-Poor, 1-Fair, 3-Good, 5-Very Good, 7-Excellent, 9-Mint or Near Mint
(UL-Unlisted in 99 Handbook, 999 Non-USA-Beer)

JFO # & Description from 1999 Handbook Of United States Beer Advertising Openers and Corkscrews

#	JFO #	Description	ST	G	BID
001	A-001-999	DRINK DRESCH SODA WATER		3	
002	A-001-UL	COMPLIMENTS BILL KERN'S MALT STORE		3	
003	A-002-999	BETTY JOE CARRY OUT RA. 0250 1186 W. BRAOD		3	
004	A-004-999	CAFE HIBSCHMAN SPRINGFIELD, OHIO	OH	3	
005	A-005-050	DRINK FALLS CITY BEVERAGES	KY	5	
006	A-005-054	GREAT FALLS BREWERIES, INC. BOHEMIAN BEER PHONE 3271	MT	5	
007	A-012-999	DRINK ST. FRANCIS ORANGE DRY GINGER ALE / MEYER'S SPECIALTY BEVERAGE CO.	CA	3	
008	A-012-999	DRINK ST. FRANCIS ORANGE DRY GINGER ALE / MEYER'S BEVERAGE CO. SAN FRANCISCO	CA	3	
009	A-012-999	1877 SYRIA TEMPLE 1952 RAY MANNING POTENTATE		7	
010	A-012-999	MIAMI IS YOURS / OFFICIAL OPENER	FL	5	
011	A-012-999	WASN'T THE DEPRESSION HELL?		7	
012	A-013-999	STAR IMP. CO. GARAGE, PHONE 855 J.H. HANSON, PRES.		7	
013	A-015-004	COOK'S EVANSVILLE, IND. (NO GAS KEY)	IN	3	
014	A-015-013	TERRE HAUTE BREWING CO. TERRE HAUTE, IND. / CHAMPAGNE VELVET "THAT EVER-WELCOME BEER!"	IN	3	
015	A-015-999	CORCHOLATA MEXICO,D.E.		5	
016	A-016-008	"CUCKOO" A DRINK FOR THE THIRSTY MALT HOPS, & / "CUCKOO" CUCKOO CUCKOO CHARLEY ROTH		5	
017	A-017-999	CORCHOLATA MEXICO,D.E.		5	
018	A-020-019	GOETZ TODAY'S FINEST BEER (VAR (B) LISTING ON 2 LINES)	WA	5	
019	A-021-000	SPIN AROUND AND PICK UP SOME CHEER UP AT ROVNER'S P-X PHONE 5536		5	
020	A-021-002	BLATZ MILWAUKEE / BLATZ OLD HEIDELBERG	WI	7	
021	A-021-999	OPEN UP NEW BUSINESS WITH ROBERTSON ALUMINUM FENCE CINCINNATI, OHIO	OH	7	
022	A-021-999	PHILPOTS MOTOR COURT PENSACOLA, FLA. PH. 4526	FL	7	
023	A-021-999	HAVE YOU TRIED OLD SOL YOU WILL LIKE IT NEWPORT, N.H.	NH	5	
024	A-021-999	HOLLYWOOD COURTS HIWAYS 25 & 42 13 MI. N OF CINCINNATI	OH	7	
025	A-023-999	COMPLIMENTS OF JAKE'S TAVERN STETSONVILLE, WIS.		7	
026	A-025-009	THE SCHOEN BREW EDELWEISS BEER	IL	5	
027	A-028-003	BOTTLED AT THE BREWERY BY THE DEPPEN BREWING CO. READING, PA. / QUEEN QUALITY.	PA	3	
028	A-029-032	BUTTE BOTTLERS' SUPPLY CO., INC. 112 S. MAIN ST. PHONE - 3236- / MALT SYRUP, CORDIALS, MISSION ORANGE DRY	MT	5	
029	A-029-088	ACME	CA	7	
030	A-029-999	THE ARISTOCRAT SAEGERTOWN THE ARISTOCRAT OF OLD STYLE GINGER ALE / DRINK SAEGERTOWN GINGER ALE		3	
031	A-029-999	FOR BEER AND WINE / SO IS A.J. CERMAK FOR U.S. SENATOR		3	
032	A-030-004	SCHOTTS LAGER HIGHLANDER CENTENNIAL	IL	5	

April 1999 JFO Auction-Closing May 19, 1999- Name & Mem #:
--

033	A-035-999	DRINK GAY-OLA IT'S BETTER 5c / DRINK GAY-OLA SATISFIES THIRST 5c		3	
034	A-038-006	KINGS BREWERY INC BROOKLYN NEW YORK KINGS BEER FIT FOR A KING KINGS BEER PILSNER STYLE	NY	7	
035	A-038-007	INDEPENDENT BREWING CO. SPECIAL PALE EXPORT BREW	PA	3	
036	A-042-006	DRINK GOLD TOP OLD TOP! THAT'S THE BEER	OH	1	
037	A-045-999	IF YOU GOTTA GO, GO TO THE CLUB - CASHMERE, WASH.	WA	5	
038	B-005-022	CALL FOR BERLIN BREWING CO'S BERLINER BEER (VERY WORN)	WI	0	
039	B-014-139	DRINK GOLDEN GLOW MADE FROM / 5% LAGER BREW	CA	3	
040	B-018-035	COMPLIMENTS OF GRAND RAPIDS BREWING CO. / SILVER FOAM & EXPORT	MI	3	
041	B-018-065	KEY TO RAINIER BEER	CA	3	
042	B-018-220	SEATTLE BREWING & MALTING CO. SEATTLE, WASH. U.S.A. / KEY TO RAINIER BEER	WA	5	
043	B-018-296	AGENT FOR READING BREWING CO. BEER. / SELL D. KUTZ, WHOLESALE LIQUORS BUENA VISTA, PA.	PA	5	
044	B-018-323	AMERICAN BREWING CO. BAKER CITY, ORE. / SELECT EXPORT	OR	0	
045	B-018-999	COMPLIMENTS OF GEO. E. BRYAN BOTTLING WORKS.		5	
046	B-018-UL	FORT SCHUYLER ALES ON DRAUGHT AND IN BOTTLES	NY	5	
047	B-019-067	KESSLER THE BEER FOR YOU	MT	5	
048	B-019-105	CALL FOR SCHMIDT'S BEER ST. PAUL'S FAMOUS	MN	5	
049	B-019-170	MINNEAPOLIS BREWING CO. GOLDEN GRAIN BELT BEERS	MN	5	
050	B-021-008	THE CLEVELAND & SANDUSKY BREWING CO. SANDUSKY, OHIO. / DRINK CRYSTAL ROCK BEER	OH	3	
051	B-021-068	DRINK RADEKE'S BEER	IL	5	
052	B-021-100	KEY TO BURKHARDT'S SELECT BEER	OH	5	
053	B-021-121	OAKLAND BREWING & MALTING CO. OAKLAND, CAL. / BLUE AND GOLD LAGER	CA	3	
054	B-021-231	DRINK CLINTON BREWING CO'S POINTER BEER	IA	5	
055	B-022-004	FALSTAFF BOTTLED BEER / SAME	MO	7	
056	B-022-021	ALPEN BRAU BOTTLED BEER	MO	5	
057	B-022-022	BERGHOF REAL GERMAN BREW	OH	5	
058	B-022-045	INDIANAPOLIS BREWING CO. / LIEBER'S GOLD MEDAL BEER THE WORLD'S "STANDARD OF PERFECTION"	IN	3	
059	B-022-046	K.C.B. CO. OLD FASHIONED BEER (HAS NAME STAMPED ON BACK G A FORD)	MO	5	
060	B-023-164	BUTTE BOTTLERS' SUPPLY CO., INC. WHOLESALE&RETAIL BOTTLERS' SUPPLIES PHONE 2522 116 S. MAIN ST. BUTTE, MONTANA	MT	3	
061	B-023-999	MUNSON BEVERAGES ARE SWEETENED WITH PURE CANE SUGAR		3	
062	B-023-999	SAEGERTOWN GINGER ALE		5	
063	B-024-046	MUEHLEBACH PILSENER SINCE 1868 (VAR (B) SCRIPT LETTERS)	MO	5	
064	B-024-LOT	#1 ACME #5 BURGERMEISTER #32 SCHMIDT (FAIR TO GOOD)		3	
065	B-035-999	BRENDGARD'S SERVICE SHELL GAS HAVRE, MONT.	MT	5	
066	B-046-001	COMPLIMENTS OF SEATTLE BREWING AND MALTING CO. / KEY TO RAINIER BEER	WA	5	
067	B-053-999	BALL QUICK SHOE REPAIR / 66 NO. CLINTON AVE. ROCHESTER, NY	NY	3	
068	B-069-000	THE GATE TAVERN 4514 SOUTH M STREET		5	
069	C-001-003	P. SCHOENHOFEN BREWING CO, CHICAGO EDELWEISS BEER (CASE OF BEER) A CASE OF GOOD JUDGMENT	IL	3	
070	C-010-004	FAMOUS BEVERWYCK BEER & ALE ALBANY, N.Y.	NY	5	
071	C-010-018	PIEL'S BEER	NY	5	
072	C-011-016	GENERAL BREWING CORPORATION LUCKY LAGER LUCKY LAGER DATED BEER / SAME	CA	3	
073	C-012-142	BINZEL BRG. CO. OCONOMOWOC BINZEL "EXTRA" BEER	WI	5	
074	C-012-157	MISSOULA BREWING COMPANY MISSOULA, MONTANA / HIGHLANDER PALE BEER	MO	5	
075	C-013-012	CANANDAIGUA BEER-ALE	NY	5	

April 1999 JFO Auction-Closing May 19, 1999- Name & Mem #:

076	C-013-166	CARLING	OH	5	
077	C-013-263	LEIDIGER'S 3-V BEVERAGES	WI	5	
078	C-013-271	HARVARD BREWS NEW ENGLAND'S FINEST / HARVARD (BOTTLE)	MA	5	
079	C-014-035	OLDE VIRGINIA PREMIUM BEER-POPULAR PRICE	VA	3	
080	C-015-004	BE HAPPY WITH HARVARD ALE OR EXPORT	MA	7	
081	C-015-010	SCHAEFER AMERICA'S OLDEST LAGER BEER / SAME	NY	7	
082	C-028-003	MOUND CITY MALT SYRUP / SAME	IL	3	
083	CBO SEP-8	(SEPARATE HANDLE) COMPLIMENTS OF THE HOUSE OF P.H. (LETTERING ON WOOD HANDLE WORN)		3	
084	CBO DHM-7	(DOUBLE HAMMER) LA MARSEILLAISE CLEAR HAVANA KEY WEST CIGAR / ARNOLD POLLACK & CO. 20 BATTERY ST. S.F. CIGAR IMPORTERS	CA	3	
085	CBO RND-11	(ROUND HEAD WITH LEATHER WRAPPED HANDLE) LETTERING ON LEATHER HANDLE VERY WORN OTHERWISE VERY GOOD		1	
086	D-005-017	GOLD LABEL	WI	5	
087	D-009-007	OLD IMPERIAL	WI	1	
088	D-012-006	EDELWEISS / SAME	IL	3	
089	E-001-003	DAEUFER'S BEER "ALLENTOWN'S FAVORITE" / THIRSTY JUST CALL DAEUFER'S 4733	PA	5	
090	E-001-010	KUEBLER BREWING CO. PHONE 4225 EASTON, PA. / BEER-ALE- PORTER QUARTS-PINTS-STEINIE	PA	7	
091	E-001-012	STEGMAIER BREWING CO. WILKES-BARRE, PA. / WILKES-BARRE TEL. 2-8171 SCRANTON TEL. 4-1167	PA	5	
092	E-001-014	TROMMER'S GENUINE ALE TASTE AND COMPARE! / TROMMER'S MALT BEER TASTE AND COMPARE!	NY	5	
093	E-001-015	JOHN F. TROMMER, INC. BROOKLYN, N.Y. / TROMMER'S MALT BEER TASTE & COMPARE	NY	7	
094	E-001-016	BELMONT BEER JOHN L. ALE / SAME		3	
095	E-001-022	GRIESEDIECK BROS. LIGHT LAGER BEER ST. LOUIS / SAME	MO	7	
096	E-001-024	KOEHLER'S BEER OLD DOBBIN ALE	PA	5	
097	E-001-028	STEGMAIER BREWING CO. WILKES-BARRE, PA. / WILKES-BARRE- TEL. 20304 SCRANTON-TEL. 41167	PA	5	
098	E-002-007	HORNUNG'S PHILA. LONDONDERRY ALE / HORNUNG'S, PHILA. WHITE BOCK BEER	PA	7	
099	E-002-010	ADAM SCHEIDT BREWING CO. / VALLEY FORGE BEER	PA	7	
100	E-002-016	KEEP "PRIMO" IN YOUR HOME / ITS BEST FOR YOU JAMES ESPOSITO		7	
101	E-002-018	ADAM SCHEIDT BREWING CO. / VALLEY FORGE SPECIAL	PA	5	
102	E-002-024	DIAMOND SPRING ALE / SAME	MA	7	
103	E-002-999	VERNOR'S GINGER ALE DETROIT, MICH.	MI	3	
104	E-003-005	FISHER BEER SINCE 1884 / SAME	UT	5	
105	E-003-007	FOX HEAD BEERS AND ALE / SAME	WI	5	
106	E-003-008	GRIESEDIECK BROS. ST. LOUIS LIGHT LAGER / SAME	MO	5	
107	E-003-011	DRINK GOOD OLD HOOSIER BEER / SAME	IN	5	
108	E-003-013	DRINK KAMM'S QUALITY BEER / SAME		5	
109	E-003-016	C. SCHMIDT & SONS, INC., PHILADELPHIA, PA. / BEER-ALE BREWERS SINCE 1860	PA	5	
110	E-003-018	STANDARD BREWING CO. INC. ROCHESTER, N.Y.	NY	5	
111	E-003-020	STANDARD BREWING CO. INC. ROCHESTER, N.Y. / STANDARD ALE PORTER-HALF & HALF	NY	5	
112	E-003-021	STANDARD BREWING CO. INC. ROCHESTER, N.Y. TEL. GLEN.0373 / STANDARD DRY ALE OLD OX CART BEER	NY	7	
113	E-003-022	STANDARD BREWING CO. SCRANTON, PA. / SCRANTON TEL. 41143 KINGSTON TEL. 72300	PA	7	
114	E-003-029	DAEUFER'S BEER ALLENTOWN'S FAVORITE / THIRSTY JUST CALL DAEUFER'S 4733	PA	5	
115	E-003-035	JUNG BREWERY OLD COUNTRY BEER	WI	1	

April 1999 JFO Auction-Closing May 19, 1999- Name & Mem #:
--

116	E-003-042	STANDARD BREWING CO. INC. ROCHESTER, N.Y. / STANDARD ALE STOCK AND OX HEAD	NY	7	
117	E-003-043	BANKERS ALE BANKERS ALE / LUCKY LAGER LUCKY LAGER	CA	5	
118	E-003-061	STEGMAIER BREWING CO. WILKES-BARRE, PA. / SAME	PA	5	
119	E-003-063	BOHEMIAN CLUB GOOD TASTE / SAME	MT	5	
120	E-004-074	REGAL PALE BEER / SAME (VAR (A) NO SCREWDRIVER TIP)	CA	5	
121	E-004-083	WAUSAU BREWING CO. ADEL BRAU / WAUSAU BREWING CO. SCHOEN'S	WI	5	
122	E-004-131	THE PEOPLES BREWING CO. OSHKOSH, WIS. / PHONE 334	WI	3	
123	E-004-170	GOLD LABEL BEER	WI	5	
124	E-004-273	WAUSAU BREWING CO. ADEL BRAU	WI	5	
125	E-004-321	DEMAND GRAF'S BEVERAGES / THE BEST WHAT GIVES	WI	5	
126	E-004-999	NORKA BEVERAGES		3	
127	E-005-UL	FALSTAFF (SHIELD) HERB SADLER SADLER DISTRIBUTING COMPANY 440 NO. SECOND ST., MEMPHIS, TENN. PHONE 8-5296	TN	5	
128	E-009-001	ANHEUSER-BUSCH ST. LOUIS MISSOURI. / SAME	MO	5	
129	E-009-004	VAL. BLATZ BRG. CO. MILWAUKEE, WIS. / BLATZ PRIVATE STOCK LEADS THEM ALL	WI	7	
130	E-009-009	GRAUPNER'S POR-DER / GRAUPNER'S SELECT	PA	5	
131	E-009-019	JACOB RUPPERT'S KNICKERBOCKER / SAME	NY	7	
132	E-009-024	BUCKEYE B. CO. GREEN SEAL BEER / SAME	OH	5	
133	E-009-026	THE CUMBERLAND BREWING COMPANY / OLD EXPORT BEER	MD	7	
134	E-009-028	PUT EASTSIDE INSIDE IT'S FRANKERIZED / SAME	CA	3	
135	E-009-033	GENESEE LIEBOTSCHANER / GENESEE 12 HORSE ALE	NY	5	
136	E-009-043	RUHSTALLER'S GILT EDGE LAGER / SAME	CA	7	
137	E-009-069	GENESEE LIEBOTSCHANER / SAME	NY	5	
138	E-009-072	LIEBMANN'S EXPORT LAGER BEER / LIEBMANN'S XXX CREAM ALE	NY	3	
139	E-009-077	OLYMPIA BEER IT'S THE WATER / SAME	WA	7	
140	E-009-103	NEW ORLEANS BREW. CO. DRINK 4X OLD STOCK / SAME	LA	7	
141	E-009-115	SCHMIDT BREWING CO. DRINK CITY CLUB / SAME	MN	5	
142	E-014-005	ACME BREWING CO. LOS ANGELES / ACME BEER	CA	5	
143	E-014-006	ENJOY ACME BEER / SAME	CA	7	
144	E-014-009	AMERICAN BREWERY, INC. BALTIMORE, MD. / AMERICAN BEER AMERICAN ALE	MD	5	
145	E-014-015	BAVARIAN BREWING CO. COVINGTON, KY. / BAVARIAN'S OLD STYLE BEER (VAR (B) COVINGTON. KY.)	KY	5	
146	E-014-026	BLATZ MILWAUKEE BEER / SAME	WI	5	
147	E-014-039	BUTTE BEER IS "BETTER" BEER / SAME	MT	3	
148	E-014-047	F.W. COOK COMPANY, INC. EVANSVILLE, INDIANA / COOK'S BEER BOTTLES-CANS	IN	7	
149	E-014-048	COOK'S GOLDBLUME BEER	IN	5	
150	E-014-049	COOPER'S BEER-ALE-PORTER / NAMAR NIPS BEER-ALE	PA	1	
151	E-014-050	COORS AMERICA'S FINE LIGHT BEER / SAME (VAR (A) SLOGAN 1 LINE)	CO	5	
152	E-014-050	COORS AMERICA'S FINE LIGHT BEER / SAME (VAR (B) SLOGAN 2 LINE)	CO	7	
153	E-014-052	DRINK COORS GOLDEN BEER / SAME	CO	7	
154	E-014-057	DAWSON'S ALE & BEER / SAME	MA	5	
155	E-014-059	DICK BROS. BRG. CO. QUINCY, ILLINOIS / SAME	IL	7	
156	E-014-063	DUQUESNE PILSENER / SILVER TOP BEER	PA	5	
157	E-014-074	ENGESSER BREWING CO. ST. PETER, MINNESOTA	MN	7	
158	E-014-077	ERLANGER DE LUXE / ERLANGER DELUXE HALF & HALF		7	
159	E-014-081	FALSTAFF BREWING CORP. ST. LOUIS OMAHA-NEW ORLEANS / THE CHOICEST PRODUCT OF THE BREWERS' ART	MO	7	

April 1999 JFO Auction-Closing May 19, 1999- Name & Mem #:
--

160	E-014-082	FAUERBACH C.B. BEER / FAUERBACH ASK FOR C.B.	WI	5	
161	E-014-083	FEHR'S X-L BEER / SAME	KY	3	
162	E-014-084	FEHR'S X/L BEER LOUISVILLE, KY. / DRINK FEHR'S IT'S GOOD	KY	7	
163	E-014-088	FITGER'S BEER DULUTH, MINN. / NATURALLY BREWED NATURALLY BETTER	MN	9	
164	E-014-092	FORT PITT SPECIAL BEER / OLD SHAY DELUXE BEER AND ALE	PA	5	
165	E-014-100	G B BEER G B ALE / SAME	CA	7	
166	E-014-109	M.K. GOETZ BREWING CO. ST. JOSEPH, MO. / COUNTRY CLUB BEER GOETZ LAGER BEER	MO	5	
167	E-014-110	M.K. GOETZ BREWING CO. ST. JOSEPH, MO. / COUNTRY CLUB BEER PILSENER BEER	MO	7	
168	E-014-111	M.K. GOETZ BREWING CO. ST. JOSEPH, MO. / DRINK COUNTRY CLUB COUNTRY CLUB SPECIAL	MO	5	
169	E-014-112	M.K. GOETZ BREWING CO. ST. JOSEPH, MO. / COUNTRY CLUB PILSENER COUNTRY CLUB SPECIAL	MO	7	
170	E-014-115	GRACE BROS. BEER AND ALE / SAME	CA	5	
171	E-014-127	GRIESEDIECK BROS. ST. LOUIS-BEER / SAME	MO	7	
172	E-014-155	DRINK HUDEPOHL BEER / SAME	OH	7	
173	E-014-159	JUNG BEER RANDOM LAKE, WIS. / SAME	WI	9	
174	E-014-160	KAIER BREWING CO. / MAHANAY CITY PENNA.	PA	5	
175	E-014-162	KEELEY HALF & HALF BLEND OF BEER & ALE / SAME	IL	7	
176	E-014-163	KESSLER BREWING CO. KESSLER BEER / SAME	MT	5	
177	E-014-164	KESSLER BREWING CO. LORELEI	MT	7	
178	E-014-166	KINGSBURY PALE BEER MANITOWOC AND SHEBOYGAN, WISCONSIN	WI	7	
179	E-014-167	FRED KOCH BREWERY DUNKIRK, N.Y. / SAME	NY	5	
180	E-014-168	G. KRUEGER BRG. CO. NEWARK, N.J. / OLD SURREY PORTER CREAM ALE & KENT ALE	NJ	7	
181	E-014-170	KRUEGER CREAM ALE FINEST BEER / SAME	NJ	5	
182	E-014-174	LEINENKUGEL CHIPPEWA'S PRIDE BEER	WI	7	
183	E-014-177	LUCKY LAGER AGE-DATED BEER / SAME	CA	7	
184	E-014-178	LUCKY LAGER LUCKY ALE / SAME	CA	5	
185	E-014-181	MANKATO BREWING CO. KATO LAGER BEER / SAME	MN	5	
186	E-014-189	MINNEAPOLIS BREWING CO. THE MINNEAPOLIS BEER / GOLDEN GRAIN BELT BEERS CANTERBURY ALE	MN	5	
187	E-014-201	OLD DUTCH BEER PENNSYLVANIA'S BEST	PA	7	
188	E-014-206	OLD READING BEER AND ALE / PALE RESERVE BERKSHIRE ALE	PA	7	
189	E-014-208	OLYMPIA "IT'S THE WATER" / SAME	WA	7	
190	E-014-218	PHILADELPHIA BWG. CO. OLD STOCK BEER-ALE / SAME	PA	3	
191	E-014-226	QUEEN CITY BRG. CO. CUMBERLAND, MARYLAND / THE ORIGINAL OLD GERMAN BEER (VAR (A) CUMBERLAND, MARYLAND)	MD	7	
192	E-014-226	QUEEN CITY BRG. CO. CUMBERLAND, MARYLAND / THE ORIGINAL OLD GERMAN BEER (VAR (B) CUMBERLAND MARYLAND)	MD	7	
193	E-014-242	ROCHESTER BRWG. CO. OLD TOPPER / THE FLAVOR THAT'S IN FAVOR	NY	5	
194	E-014-254	AUG. SCHELL BRG. CO. NEW ULM, MINN. / "SCHELL'S DEER BRAND BEER	MN	5	
195	E-014-256	SCHLITZ BEER MILWAUKEE, WIS. / SAME	WI	7	
196	E-014-257	SCHLITZ LAGER IN CAP-SEALED CANS / SAME	WI	5	
197	E-014-258	JOS. SCHLITZ BRG. CO. MILWAUKEE, WIS. / SCHLITZ BEER BOTTLES-CANS	WI	7	
198	E-014-259	SCHMIDT BEER OF ST. PAUL / ENJOY SCHMIDT BEER	MN	5	
199	E-014-260	SCHMIDT BREWING CO. ST. PAUL, MINN. / DRINK SCHMIDT'S CITY CLUB BEER	MN	3	
200	E-014-264	SCHMIDT'S OF PHILADELPHIA / BEER-ALE BREWERS SINCE 1860	PA	5	
201	E-014-266	SHERIDAN EXPORT BEER / SHERIDAN WYOMING	WY	7	
202	E-014-274	STAR-PEERLESS BRY. CO. OLTIMER BEER / SAME	IL	7	

April 1999 JFO Auction-Closing May 19, 1999- Name & Mem #:

203	E-014-280	F. & S. BEER SHAMOKIN, PA. / SAME	PA	9	
204	E-014-294	AUGUST WAGNER BREWERIES, INC. GIMME A "GAM" / SAME	OH	7	
205	E-014-309	ACME BEER / SAME	CA	5	
206	E-014-314	ARIZONA APACHE BEER HOME INDUSTRY	AZ	7	
207	E-014-318	BECKER BREWING & MALTING CO. / BECKER'S UINTA CLUB BEER	WY	7	
208	E-014-324	BLUFF CITY BEER QUALITY BREW SINCE 1882	IL	5	
209	E-014-344	CROWN PREMIUM LAGER BEER / SAME		5	
210	E-014-356	FALSTAFF BREWING CORP. ST. LOUIS, MO. / SAME	MO	9	
211	E-014-359	FISHER BEER SINCE 1884 / SAME	UT	7	
212	E-014-360	DRINK FITGER'S NORDLAGER / SAME	MN	5	
213	E-014-362	THE FRANKLIN BREWING CO. COLUMBUS, OHIO BEN BREW BEER / SAME	OH	3	
214	E-014-374	SICKS' GREAT FALLS BREWERIES, INC. / SAME	MT	7	
215	E-014-388	MAKE MINE! KARLSBRAU/SAME (VAR(A)KARLSBRAU SMALL LETTERS)		5	
216	E-014-391	KIEWEL'S WHITE SEAL BEER	MN	7	
217	E-014-393	KRANTZ FINDLAY, OHIO. OLD DUTCH / OLD DUTCH THE GOOD BEER	OH	7	
218	E-014-394	G. KRUEGER BRG. CO. NEWARK, N.J. / KRUEGER'S FINEST BEER AMBASSADOR BEER	NJ	5	
219	E-014-395	KUEBLER BREWING CO. EASTON, PA. / SAME	PA	7	
220	E-014-413	OERTELS' 92 BEER LOUISVILLE, KY. / SAME	KY	3	
221	E-014-428	RED TOP BREWING CO. RED TOP ALE / BARBAROSSA BEER CINCINNATI, OHIO (VAR (B) CINCINNATI. OHIO)	OH	7	
222	E-014-437	A. SCHELL BREWING CO. DEER BRAND BEER / NEW ULM, MINNESOTA	MN	7	
223	E-014-469	BLACKHAWK BEER / SAME	IA	1	
224	E-014-470	BLATZ BEER BLATZ BEER / SAME	WI	7	
225	E-014-473	BLITZ-WEINHARD BLITZ-WEINHARD / SAME	OR	7	
226	E-014-489	EASTSIDE BEER EASTSIDE BEER / SAME	CA	7	
227	E-014-493	FALSTAFF BREWING CORP. ST. LOUIS, OMAHA, SAN JOSE NEW ORLEANS, FT. WAYNE/THE CHOICEST PRODUCT OF THE BREWERS' ART	MO	7	
228	E-014-498	FOX DELUXE BEER FOX DELUXE BEER / SAME	IL	7	
229	E-014-500	GERMAN BREWING CO. CUMBERLAND, MD. / THE ORIGINAL OLD GERMAN BEER	MD	5	
230	E-014-514	DRINK KAMM'S QUALITY BEER / SAME		7	
231	E-014-529	HENRY F. ORTLIEB BREWY, CO. PHILADELPHIA, PA. / ORTLIEB'S ALE ORTLIEB'S BEER (VAR (A) BREWY)	PA	5	
232	E-014-530	OSHKOSH BREWING CO. OSHKOSH, WIS. / OSHKOSH BREWING CO. OSKOSH, WIS. (NO H)	WI	5	
233	E-014-546	AUG. SCHELL BRG. CO. NEW ULM, MINN. / DEER BRAND BEER	MN	5	
234	E-014-576	ZIEGLER BEER	WI	5	
235	E-014-579	AMERICAN ALE BALTIMORE, MD. / AMERICAN BEER BALTIMORE, MD.	MD	7	
236	E-014-583	ANACONDA BREWING CO. / ROCKY MOUNTAIN BEER	MT	3	
237	E-014-601	FALSTAFF BREWING CORP. ST. LOUIS-OMAHA NEW ORLEANS / THE CHOICEST PRODUCT OF THE BREWERS ART (VAR (A) BREWERS)	MO	7	
238	E-014-614	HORNELL BRG. CO. INC. K.D.K. CREAM ALE / OLD RANGER BEER AND ALE	NY	5	
239	E-014-697	SCHMIDT BREWING CO. DRINK CITY CLUB / SAME	MN	7	
240	E-014-705	OERTEL BREWING CO. LOUISVILLE, KY. / CHEER UP WITH OERTEL'S '92 BEER	KY	7	
241	E-014-727	RAINIER BREWING CO. INC. SAN FRANCISCO, CAL. / RAINIER BEER-ALE	CA	5	
242	E-014-816	ROCHESTER BREWING CO. INC. ROCHESTER, NEW YORK / GOLDEN OLD TOPPER ALE-BEER	NY	5	
243	F-002-016	VERNON BREWING CO. / GOLDEN CREME BEER	CA	5	
244	F-002-037	DOMANIK, PABST DIST.	WI	5	
245	F-002-999	HOTEL SPOKANE	WA	5	

April 1999 JFO Auction-Closing May 19, 1999- Name & Mem #:

246	F-003-001	POTOSI BREWING CO. AN OPENER FOR FRIENDSHIP (WITH ORIGINAL PACKAGE)	WI	3	
247	F-004-022	BLATZ LIME RICKEY UNEXCELLED COVERABILITY	WI	5	
248	F-004-999	HOTEL TOWNSEND WYOMING'S MOST HOSPITABLE CASPER, WYO.	WY	3	
249	F-004-999	LETS UNCAP OUR SPIRITS AND STIR UP BUSINESS OLD FAITHFUL BEVERAGE CO. IDAHO FALLS, IDAHO	ID	5	
250	F-017-001	ADEL BRAU / SCHOENS	WI	3	
251	G-002-005	HARVARD BEER ALE PORTER	MA	5	
252	G-002-006	PENNSYLVANIA DUTCH OLD GERMAN BEER	PA	5	
253	G-009-024	STEGMAIER BREWING CO. WILKES BARRE, PA. / STEGMAIER'S GOLD MEDAL BEER (WHITE ON BLUE)	PA	5	
254	G-009-025	STEGMAIER BREWING CO. WILKES BARRE, PA. / STEGMAIER'S GOLD MEDAL BEER (GOLD ON RED)	PA	7	
255	G-009-038	SCHREIBER BREWING CO. INC. BUFFALO, NEW YORK (BLACK ON NATURAL)	NY	5	
256	G-009-057	SCHREIBER BREWING CO. INC. BUFFALO, NEW YORK MANRU AND KLOSTER BEERS SCHREIBER'S ALE (BLACK ON NATURAL)	NY	0	
257	H-002-002	AMERICAN BREWING CO. ROCHESTER, N.Y. TAM O'SHANTER ALE AND LIBERTY BEER	NY	5	
258	H-002-004	BERGHOFF FORT WAYNE	IN	5	
259	H-002-007	"ENJOY BURGER BEER"	OH	5	
260	H-002-013	DUQUESNE CAN-O-BEER -IN CROWN-SEALED CANS- "MATCH IT IF YOU CAN" (VAR (A) SCRIPT LETTERS)	PA	7	
261	H-002-013	DUQUESNE CAN-O-BEER -IN CROWN-SEALED CANS- "MATCH IT IF YOU CAN" (VAR (B) BLOCK LETTERS)	PA	5	
262	H-002-014	DUQUESNE KEG-O-BEER IN CROWN SEALED CANS "THE KEG BEER FLAVOR MERITS YOUR FAVOR"	PA	5	
263	H-002-015	DUQUESNE OF PITTSBURGH, PA. "THE FINEST BEER IN TOWN"	PA	5	
264	H-002-016	DUQUESNE PILSENER "THE FINEST BEER IN TOWN"	PA	5	
265	H-002-019	FORT PITT BREWING CO.	PA	3	
266	H-002-020	DON'T SAY BEER-SAY "FORT SCHUYLER"	NY	3	
267	H-002-021	M.K. GOETZ BREWING CO. ST. JOSEPH & KANSAS CITY MO. COUNTRY CLUB THE BRIGHT BEER	MO	3	
268	H-002-024	HORNUNG BEER ALE	PA	5	
269	H-002-026	KOEHLER'S THERE IS NO BETTER BEER!	PA	3	
270	H-002-027	MONARCH BRG. CO. CHICAGO MONARCH BEER	IL	5	
271	H-002-028	PHILADELPHIA BREWING CO. OLD STOCK LAGER	PA	5	
272	H-002-029	ORTLIEB'S BEER-ALE	PA	5	
273	H-002-034	RAHR GREEN BAY BREWING CORP. GREEN BAY, WIS. OLD IMPERIAL AND VAN DYCK BEER	WI	7	
274	H-002-036	C. SCHMIDT & SONS, INC. BREWERS IN PHILADELPHIA SINCE 1860	PA	5	
275	H-002-042	TRU-BLU BEER AND ALE	PA	7	
276	H-002-044	UTICA CLUB THE FAMOUS UTICA BEER	NY	3	
277	H-002-048	WEBER WAUKESHA BREWING CO.-WAUKESHA, WIS. YOU WILL ENJOY WEBER WAUKESHA BEER	WI	7	
278	H-002-051	D.G. YUENGLING & SON INC. POTTSVILLE, PA.	PA	5	
279	H-002-060	DUQUESNE KEG-O-BEER "THE FINEST BEER IN TOWN IN CANS"	PA	3	
280	H-002-061	EDELWEISS	IL	5	
281	H-002-066	HIGHLANDER BEER	MT	5	
282	H-002-067	JACOB HORNUNG BREWING CO. PHILADELPHIA, PA. "WHITE BOCK" BEER	PA	7	
283	H-002-068	JACOB LEINENKUGEL BREWING CO. CHIPPEWA FALLS, WIS. A FAVORITE SINCE 1867	WI	7	
284	H-002-075	WEST VIRGINIA PILSENER BEER	WV	3	
285	H-003-015	DRINK IRON CITY BEER	PA	3	
286	H-003-027	DRINK TECH BEER	PA	1	
287	I-007-006	BALLANTINE'S ALES BEER (3 RINGS)	NJ	5	

April 1999 JFO Auction-Closing May 19, 1999- Name & Mem #:

288	I-007-010	COORS BEER GOLDEN, COLO.	CO	7	
289	I-007-021	PETER HAND BREWERY CO. MEISTER BRAU "THE BEER"	IL	3	
290	I-007-023	KINGS BREWERY, INC. BROOKLYN, N.Y. KINGS BEER AND ALE	NY	5	
291	I-007-030	FOR OPENING NU-GLOBE BEER	CA	5	
292	I-027-002	GREAT FALLS SELECT / GREAT FALLS SELECT FINE BEER	MT	7	
293	K-005-002	SCHLITZ THE BEER THAT MADE MILWAUKEE FAMOUS (VAR (B) METAL TAG ON GREY BASE)	WI	7	
294	L-004-040	PITTSBURGH BREWING CO. IRON CITY LAGER (STUBBY BOTTLE-BLACK)	PA	7	
295	M-024-001	COORS	CO	9	
296	M-029-056	SCHLITZ (IN LOGO) GIB BUCKBEE & SON CLINTONVILLE BOTTLING WORKS PHONE 2278		5	
297	M-030-999	7 UP THE UNCOLA. SEVEN UP BOTTLING CO. 2939 ACADEMY WAY SACRAMENTO, CALIF. 95815 PHONE 929-7777	CA	7	
298	M-066-001	SCHLITZ (LOGO)	WI	3	
299	M-076-001	SCHLITZ	WI	7	
300	N-011-003	DRINK FALSTAFF PALE DRY GINGER ALE AND LEMON SODA	MO	3	
301	N-020-002	SAY GROSS FOR GROSSVATER / OLD LAGER BEER DE ALCOHOL-IZED	OH	5	
302	O-005-003	DIXIE 45 BEER	LA	7	
303	O-005-007	(X) LUCKY LAGER	CA	5	
304	O-005-016	ALWAYS SERVE STERLING BEER	IN	5	
305	O-005-017	BURGERMEISTER BEER	CA	5	
306	O-005-030	BUD KING OF BEERS	MO	5	
307	O-005-999	TRU-ADE (MIB)		9	
308	O-005-999	CERVEZA CARACAS (MIB)		9	
309	O-005-999	CANADA DRY		7	
310	O-017-001	ROLLING ROCK (ON OPENER) POP YOUR ROCKS ROLLING ROCK EXTRA PALE PREMIUM BEER SAME AS IT EVER WAS. "33" (ON CROWN CAP CATCHER)	PA	9	
311	P-008-114	NARRAGANSETT BREWING CO. PROVIDENCE, R.I. NEW ENGLAND'S LARGEST BREWERY / THE FAMOUS NARRAGANSETT EXPORT, ALE AND PORTER	RI	3	
312	P-008-136	THE PETER SCHOENHOFEN BREWING COMPANY'S EDELWEISS / SAME	IL	5	
313	P-024-002	ANHEUSER BUSCH / SAME	MO	0	
314	Q-008-003	COORS (VAR (A) PLAIN)	CO	7	
315	Q-008-012	COORS LIGHT	CO	7	
316	Z-LOT-"I"s	Over 350 "I" Types broken down as follows: I-1 (2) I-3 (2) I-4 (2) I-5 (1) I-6 (8) I-7 (15) I-11 (115) I-12 (65) I-13 (22) I-14 (5) I-15 (12) I-16 (12) I-17 (75) I-18 (1) I-19 (4) I-20 (4) I-22 (14) Some Duplicates with at LEAST 95% DIFFERENT, OVERALL CONDITION IS VERY GOOD TO EXCELLENT, MINIMUM BID \$200			



The Just For Openers Membership Directory
--

Just For Openers now has 325 members (New Members: Numbers 899-912)

Many thanks to JFO members who helped to bring in new members during 1998.

If any information is wrong please notify me.

The following table is a quarterly breakdown of when membership numbers were issued.

Jan 79 (1-85)	Apr 85 (397-405)	Jan 91 (566-567)	Oct 96 (796-808)
Apr 79 (86-143)	Jul 85 (406-410)	Apr 91 (568-574)	Jan 97 (809-814)
Jul 79 (144-165)	Oct 85 (411-414)	Jul 91 (575-583)	Apr 97 (815-825)
Oct 79 (166-178)	Jan 86 (415-444)	Apr 92 (584-602)	Jul 97 (826-832)
Jan 80 (179-185)	Apr 86 (445-454)	Jul 92 (603-618)	Oct 97 (833-837)
Apr 80 (186-191)	Jul 86 (455-456)	Apr 93 (619-633)	Jan 98 (838-856)
Jun 80 (192-194)	Oct 86 (457-460)	Jul 93 (634-640)	Apr 98 (857-873)
Jul 80 (195-200)	Jan 87 (461-473)	Oct 93 (641-647)	Jul 98 (874-881)
Jan 81 (201-228)	Apr 87 (474-477)	Jan 94 (648-658)	Oct 98 (882-889)
Jan 82 (229-296)	Jul 87 (478-484)	Apr 94 (659-669)	Jan 99 (890-898)
Apr 82 (297-314)	Oct 87 (485-488)	Jul 94 (670-676)	Apr 99 (899-912)
Jul 82 (315-326)	Jan 88 (489-496)	Oct 94 (677-688)	
Oct 82 (327-329)	Apr 88 (497-500)	Jan 95 (689-705)	
Jan 83 (330-342)	Jul 88 (501-510)	Apr 95 (706-720)	
Jan 84 (343-365)	Oct 88 (511-517)	Jul 95 (721-734)	
Apr 84 (366-376)	Apr 89 (518-525)	Oct 95 (735-749)	
Jul 84 (377-385)	Apr 90 (526-548)	Jan 96 (750-763)	
Oct 84 (386-387)	Jul 90 (549-560)	Apr 96 (764-778)	
Jan 85 (388-396)	Oct 90 (561-565)	Jul 96 (779-795)	

The following table shows the membership breakdown by state.

Arkansas 2	Illinois 22	Montana 2	Pennsylvania 25	
Arizona 9	Indiana 7	North Carolina 8	South Carolina 1	
California 31	Kansas 4	Nebraska 6	South Dakota 4	
Canada 7	Kentucky 2	New Hampshire 1	Tennessee 5	
Colorado 6	Louisiana 3	New Jersey 7	Texas 15	
Connecticut 5	Massachusetts 9	New Mexico 1	Virginia 9	
Florida 13	Maryland 6	New York 20	Vermont 3	
Georgia 1	Michigan 12	Ohio 13	Washington 4	
Iowa 5	Minnesota 12	Oklahoma 1	Wisconsin 21	
Idaho 2	Missouri 17	Oregon 3	West Virginia 2	

Please note that 4 members choose not to be listed in the membership directory.

Newsletter Content and Deadlines for Sending in Articles and Receiving Newsletter				
	January Issue	April Issue	July Issue	October Issue
Newsletter Content	New Additions to Handbook	Membership Directory	Convention Highlights	New Discoveries
Articles	December 1st	March 1st	June 1st	September 1st
Receiving	January 31st	April 30th	July 31st	October 31st

1999 Just For Openers Membership Directory

Mem#	Last Name	First	Spouse	Street	City	State	Zip	Phone (E-Mail)	Specialties/(Sponsor)
845	Abate	Gene	Charlene	9 Brook Rd	Kendall Park	NJ	08824-1501	(732) 422-0923	NJ & C-Type Openers
679	Alcorn	Dewaine	Irma	4416 Waterbury Ln	Lincoln	NE	68516-1520	(402) 489-7564 (dalcorn@unl.edu)	Nebraska & Minnesota Beer Openers
230	Anheuser-Busch Co Inc	Corporate Library		PO Box 1828 Bechtold Station	Saint Louis	MO	63118-0828	(314) 577-2000	(Write Attn. Mary Butler)
751	Arber	Bill	Barbara	11162 Broadway St	Alden	NY	14004-9515	(716) 681-4833 (wrabra@aol.com)	All Figurals/O-5s/M-3s/H-4s/K-2s
619	Archer	John		353 Concord Dr	Oregon	WI	53575-3616	(608) 835-3728	"A" & "B" Types & Misc
810	Armstrong	Steve		PO Box 741	Kamiah	ID	83536-0741	(208) 935-2317 (sunset@cybrqu est.com)	Montana & Idaho & H-8s & L-1s
771	Atkinson	Murray	Pam	9096 E Bella Vista Ct	Floral City	FL	34436-2401	(352) 637-6016	Beer & Can Openers & Corkscrews !!!
641	Atkinson	Tom	Gillian	5 Old Long Plain Rd	Amherst	MA	01002-9519	(413) 548-9608	Corkscrews
415	Bachmann	Kurt	Debbie	57883 Hanover Rd	Washington	MI	48094-3083	(810) 677-3284 (kbach@clearr.com)	All Michigan Breweriana
729	Bailey II	Eddie	Carol	4408 NE Sunnybrook Ln	Kansas City	MO	64117-1922	(816) 459-9607	Any Advertising Openers and Figurals
888	Bandy	Jack	Betty	PO Box 7574	Van Nuys	CA	91409-7545	(818) 892-7359 (bandy-jack@mail.msn.com)	Corkscrews
801	Barr	David		3612 Riddle Ct	Bridgewater	NJ	08807-5553	(908) 725-5083	Beer Openers
406	Barren	Mark		6141 Tachi Dr	Newfane	NY	14108-9517	(716) 778-9724	NewYork State & Canadian Openers
416	Bates	Mead	Rosemarie	23 Gardiner St	Darien	CT	06820-5111	(203) 357-0499	Manufacturer of Bottle Openers (Cymba Inc)
859	Bavington	Doug		1092 Transit RD	Victoria British Columbia	CANADA	V8S 5A2	(250) 598-3929	"A" "B" "E" "F"
585	Behnken	Ron	Jan	405 S Brewer St	Manchester	IA	52057-2206	(319) 927-2116	Beer Openers with Advertising
389	Benjamin	Marc	Pat	167 Nixon Beach Rd	Edenton	NC	27932-9447	(252) 482-2099	One Of Each Type & Figural Types
903	Berg	Roger	Carolyn	14835 SW Gearhart Dr	Beaverton	OR	97007-6618	(503) 641-1568 (rrberg1@juno.com)	Bottle Openers of All Kinds esp Mechanically Unique
692	Berlin	Bronson		1701 Alta St	San Luis Obispo	CA	93401-3004	(805) 541-0151 (brawny36@aol.com)	California Beer Openers
841	Bestard	Richard		PO Box 1334	Glendora	CA	91740-1334	(626) 914-4664	Rochester, NY & B.C.E.
202	Biehl	Larry	Fran	448 Crandon Ave	Calumet City	IL	60409-2202	(708) 891-4269 (gsu0031@uxa.e cn.bgu.edu)	Beer "F" Type Openers, Letter Openers, Knives & Matchsafes
786	Bittermann	John		621 Homestead	Joliet	IL	60435-5105	(815) 725-7770 (jebitter@aol.com)	All Illinois Openers & Breweriana
699	Blalock	Lin	Shirley	908 Wyldewood Rd	Durham	NC	27704-1602	(919) 477-1716	NEHI or NE-HI
844	Blatz	Leo	Laurie	2829 Sheridan Dr	Tonawanda	NY	14150-9420	(716) 836-5025	Blatz Only
894	Bliss	Homer A C	Cathryn	15475 Cape Dr N	Jacksonville	FL	32266-1209	(904) 757-5567 (hbliss@bellsouth.net)	Wall Mount Figural Bottle Openers
767	Bohle	Mylen	Diane	655 Ochoco Ave	Prineville	OR	97754-1230	(541) 447-4295	Figurals & Corkscrews
877	Boisa	David	Linda	7117 Castle Creek Way	Rio Linda	CA	95673-2442	(916) 991-7708	Bottle Openers and Old Cars
652	Bolam	Bob	Kathy	58 Hillary Dr	Rochester	NY	14624-5245	(716) 889-2561	Beer, Soda, Can Openers & Corkscrews
745	Boller	Jack	Alice	7208 Green Meadow Dr	Fort Worth	TX	76180-6712	(817) 281-5585	Figural & Any Bottle Openers
478	Bolton	Fred	Sue	3015 Cadencia St	Carlsbad	CA	92009-8309	(760) 942-5765	Type "E-14" Openers
195	Braeuner	Ray	Jerine	1520 Horine Rd	Festus	MO	63028-1040	(314) 937-6805	
772	Breton	Donald	Marilyn	7076 Riddle Rd	Lockport	NY	14094-9331	(716) 434-3089	Beer Openers, All Kinds of Openers, All Breweriana

1999 Just For Openers Membership Directory

Mem#	Last Name	First	Spouse	Street	City	State	Zip	Phone (E-Mail)	Specialties/(Sponsor)
847	Briske	Rick	Judy	967 Milford St	Cary	IL	60013-1967	(847) 516-9635	Figural Bottle Openers
528	Britton	Dick	Bonnie	2902 Lacota Rd	Waterford	MI	48328-3127	(248) 683-2134	Anything that Opens a Can, Jar or Bottle, is U.S. Made & Not a True Figural or Wall Mount (Type O)
675	Broders	Ed	Patti	10220 Westwood Ave	Baton Rouge	LA	70809-3243	(504) 293-2373 (ebroders@franklin-press.com)	Louisiana Openers & K-Types
398	Bromm	Donald	Ida	3240 Hwy 32	Tekamah	NE	68061-5004	(402) 374-1632	
912	Brown	Bob	Martha	712 N 12th St	Mount Vernon	IL	62864-2804	(618) 2427600	Beer Openers. (Don Bull WWW)
502	Brunner	William	Jo Ann	8773 W Mineral Point Rd	Mount Horeb	WI	53572-1229	(608) 798-2793	"M-29-30-83" & "O-2-3-4-5-6" Wall Mounts
642	Bryant	Don	Loretta	3011 Firestone Dr	Sterling Heights	MI	48310-6025	(810) 264-6839	Michigan Openers
1	Bull	Don	Bonnie	PO Box 596	Wirtz	VA	24184-0596	(540) 721-1128 (corksruel@aol.com)	All Corkscrews, Beer Knives & Beer Letter Openers
749	Burgart	Paul		52-A Samoset Ave	Hull	MA	02045-2514	(617) 925-1057	Mass. Regional Openers & Figurals
827	Burkhardt	David		290 Lowell Ave	San Bruno	CA	94107-4011	(650) 589-5228	
805	Burritt	Lew	Millie	125 Vogt Dr	Belle Chase	LA	70037-2625	(504) 394-3567 (dixiemane@earthlink.net)	Breweriana from Dixie Brewing Co (New Orleans)
822	Burruss III	John		318 Lost Oak Dr	Canyon Lake	TX	78133-5720	(830) 899-7241	A-1, A-35, B-14, B-24, C-13, G-1, M-3
824	Calhoun	Michael	Linda	424 Joilet Rd	Marquette Heights	IL	61554-1426	(309) 382-2378	Openers & Corkscrews All Types
720	Callies	Joel	Kay	21641 Luan Dr NE	East Bethel	MN	55011-9780	(612) 413-1920	Montana & Minnesota Beer Advertising Openers
690	Campbell	Bob	Elayne	12117 N 138th St	Scottsdale	AZ	85259-3760	(602) 767-8478 (bobcaz@juno.com)	Beer Advertising Openers
4	Cardone	Joe	Mary	917 Gainsborough Rd	Dayton	OH	45420-3709	(937) 294-3018	Pabst Openers
529	Cargile	Michael	Susie	20725 Shaker Blvd	Shaker Heights	OH	44122-2621	(216) 371-8234	Figurals, Nudes, 1920s & 30s, Art Deco
530	Carlson	Brian		6938 Upper 5th St N	Oakdale	MN	55128-6719	(612) 739-1608	All Esp Hamm's
587	Cartwright	John	Cheryll	17 Flag Way	Paso Robles	CA	93466-3450	(805) 226-9270 (jcartwright@tcsn.net)	"A"s, "B"s (Beer & Soda) & Golden West, Port Townsend & Rainier Breweriana
653	Chalk	Jim	Marguerite	3049 Westminster Dr	Saint Charles	MO	63301-0656	(314) 946-2392 (mkbr51a@prodigy.com)	All Openers emphasis on "A" & "C" Types
733	Clark	Dick	Jackie	8410 S Ave D	Yuma	AZ	85364-8441	(520) 783-2243	All Beer Openers, Mirrors, 56 Chevys
649	Collier	Wayne	Jeanne	13317 Vista Aroyo	San Antonio	TX	78216-2243	(210) 479-2861 (wcollier@bxdirect.net)	Figural Openers
874	Cook	Sue	Bill	4226 Belfast Dr	Corpus Christi	TX	78413-3402	(512) 853-6550 (sadsacsue@aol.com)	Openers Of All Kinds-New To Collecting.
345	Counciller	Dr Harry	Carol	PO Box 66 E Main	Greensboro	IN	47344-0066	(765) 987-1282	General (Beer & Brewery Related)
765	Cower	Gary	Darlene	144 Lovejoy Rd	Harpursville	NY	13787-1832	(607) 693-2645	Any Bottle-Can Opener
204	Cress	David	Susan	1816 Elizabeth St	Janesville	WI	53545-2704	(608) 752-7262 (dave.cress@amerock.com)	All Unusual Shapes
531	Creuziger	Dick		1226 Grove Ave	Racine	WI	53405-3043	(414) 633-9245	Pabst
411	Cross	Robert "Red"	Dorothy	10851 N 108th Dr	Sun City	AZ	85351-2648	(602) 977-5397	Openers & Toy Banks

1999 Just For Openers Membership Directory

Mem#	Last Name	First	Spouse	Street	City	State	Zip	Phone (E-Mail)	Specialties/(Sponsor)
872	Cushman	Gary	Donna	PO Box 272	Chelsea	VT	05038-0272	(802) 685-4664 (ne.breweriana@quest-net.com)	"M-1"s & "M-2"s & "M-3"s
561	Dane	Richard	Pauline	3282 W 141st St	Cleveland	OH	44111-1401	(216) 671-2687	Openers
870	Daniel	Christian		1313 Old Lamplighter Way	Wilmington	NC	28403-3431	(910) 395-9316 (christiandan898@pol.net)	Corkscrews
246	Danziger	Herbert	Camille	550 Cherry Ct	Birmingham	MI	48009-1459	(248) 646-9470 (hkdcfd@aol.com)	Corkscrews & Silver Top Beer Openers
5	Darocy	Alex		9723 Bluestem Path	Prunedale	CA	93907-1006	(831) 632-2903	
91	Deachman	Gary		PO Box 438	North Woodstock	NH	03262-0438	(603) 745-2347	B-1-2-3, M-1-2, New Hampshire Openers, Bottle Shaped, L-2-4
532	Deckert	Dale	Florence	4087 Lake Conway Woods Blvd	Orlando	FL	32812-7975	(407) 859-1543	All Kinds
889	Denney	Clayton	Barbara	630 Nottingham Dr	Hampton	VA	23669-1618	(757) 851-4258	Toys & Coke
817	Desrosiers	Michel	Marguerite	16315 Av Hebert	Saint Hyacinthe, Quebec	CANA DA	J2T 3W4	(450) 774-3200 (marigo@vitamina.ca)	Corkscrews
40	Donoghue	John		171 Lewis St (C/O Lewis Street Exchange)	Lynn	MA	01902-4834	(781) 595-3499	Anything that Opens a Can or a Bottle
000	Doppes	Gary	Peggy	3332 Oak Dr	Ypsilanti	MI	48197-8624	(734) 434-5433	
635	Dubrul II	Dave	Danette	88 Linden Ter	Burlington	VT	05401-4928	(802) 864-2089 (oldetap@aol.com)	Enterprise Brewery of Fall River, MA & "H-8"s & "M-3"s
7	Dummer	Duane	Carol	910 N Palmatory St	Horicon	WI	53032-1011	(920) 485-3395	Figural Openers, Corkscrews, All Types of Interesting Openers
663	Dutcher	Mickey	Ellie	134 Cortland-McLean Rd	Cortland	NY	13045-9203	(607) 838-3447	Figural Cast Iron & Iroquois Openers
636	Dye Jr	Ralph		PO Box 178	McConnellsville	OH	43756-0178	(740) 962-4776	Slides
900	Eastlick	Chet		PO Box 592	Etna	CA	96027-0592	(530) 467-5419	California & Oregon
879	Edwards	William	Mary Jo	11412 Rolling Springs Dr	Carmel	IN	46033-3636	(317) 846-5987	Soda Openers
763	Ellison	Dana	Catherine	PO Box 298	Ludlow	VT	05149-0298	(802) 228-3196	All Advertising Openers
738	Emme	Sandra		PO Box 1454	Upper Marlboro	MD	20773-1454	(301) 627-8207 (pg0028@epfl12.epflbalto.org)	Corkscrews, Figural, Cast Iron
823	Engelbrecht	Ken	Susan	22 Rainey Rd	Crawford	TX	76638-3317	(817) 486-2230	Advertising, Beer, or All Old Unusual or Unique Openers
95	Enloe	Glen	Pattie	805 Teepee Dr	Independence	MO	64056-2146	(816) 796-9965	Beer Advertising Openers & Cigar Box Openers
828	Ennis	Roy	Rowene	HC 1 Box 297	Ford	WA	99013-9501	(509) 796-4527	Beer & Soda Openers
882	Fadely	Don	Manuela	9240 Chetwood Dr	Colorado Springs	CO	80920-5127	(719) 282-1484 (607) 723-4273	Cast Iron & Nudes
412	Feisel	Lyle	Dorothy	977 Powderhouse Rd	Binghamton	NY	13903-9307	(feisel@binghamton.edu)	General Advertsing Beer Openers
814	Ferguson	John	Denise	3305 Five Points Rd	Indianapolis	IN	46239-9574	(317) 356-3130 (fergkate@aol.com)	Indianapolis
865	Fisher	John		PO Box 153	Benedict	MD	20612-0153	(301) 274-3340	Pennsylvania, Micro. General Breweriana Collector & Liberty Brewing Co of Tamaqua, PA
8	Ford	Jack		5351 Boyd Ave	Oakland	CA	94618-1111	(510) 655-5393	A-Types & Rainier Brewing & Hawaiian Brewing

1999 Just For Openers Membership Directory

Mem#	Last Name	First	Spouse	Street	City	State	Zip	Phone (E-Mail)	Specialties/(Sponsor)
723	Fossette	John	Mandie	2549 6th Ave	Sacramento	CA	95818-3905	(916) 456-9607	Type "A" Openers
498	Fuerst	Norma	Thomas	11 Oak Valley Rd Hilltop Mobile Homes	Bloomington	IL	61704-7438	(309) 829-6192	"Schlitz" & All Openers
884	Fulks	Andy		PO Box 92	Whitestown	IN	46075-0092		Wall Mounts, Mostly Starr X
869	Fuller	Roy	Phyllis	102 Tanner Lake Rd	Hastings	MI	49058-9730	(616) 948-2146	Bottle Openers
604	Gausepohl	David		3488 Ridgewood Dr	Erlanger	KY	41018-2887	(606) 371-4415 (beerdave@fuse.net)	All Beer Openers Especially Kentucky Micros & Midwest Breweries
333	Gauvin	Paul	Gail	24 Strawberry Ln	Manchester	CT	06040-6930	(860) 646-9722 (mtkneo@aol.com)	Connecticut Beer Openers & Maine Soda
623	Gideon	Jess	Carolyn	130 Treasure Isle Rd	Hot Springs	AR	71913-8415	(501) 767-6221	Bottle Openers, Can Openers, Corkscrews, Ice Picks, Letter Openers, Etc
301	Gilliland	Richard	Patricia	3920 Weyburn Dr	Fort Worth	TX	76109-5036	(817) 923-5580	Texas & Iowa Openers
192	Goff	John	June	577 Brookhaven Ct	Kirkwood	MO	63122-3003	(314) 966-3211	Beer, Brass & Beautiful
624	Goode	Dick	Betty	96 Thistle Patch Way	Hingham	MA	02043-9999	(617) 749-1942	Corkscrews
347	Gooden	Charlie	Linda	25101 N Watkinson Rd	Acampo	CA	95220-9733	(209) 334-6733	A & B Types
605	Gormally	Tom	Phyllis	100 Nelson Place	Westfield	NJ	07090-4035	(908) 233-8867 (william.gormally@gte.net)	American Beer Openers- Esp "E" Types
724	Goss	Janet	John	804 Phoenix Ave Trlr 4W	Helena	MT	59601-0856	(406) 442-2390 (jgoss@rcisys.net)	G-9, M-3, E-4, E-14
401	Graff	Fil	Robbie	10111 Lincoln Way W	Saint Thomas	PA	17252-9513	(717) 369-3577 (fgraff@epix.net)	One Of A Type
348	Gregg	Eldon	Carol	1714 Henry Dr	Hays	KS	67601-2659	(785) 628-1595 (c&egregg@media-net.net)	Openers
256	Gregory	Bill	Carolyn Saxton	851 N Fair Oaks	Oak Park	IL	60302-1546	(708) 386-3340 (harlow@xsite.net)	Schoenhofen-Edelweiss
592	Grignon	Jean		344 Principale	Eastman, Quebec	CANA DA	JOE 1P0	(450) 297-3740	Corkscrews & Openers
890	Gritton	Charles	Hazel	2740 Richmond Ave	Des Moines	IA	50317-8733	(515) 266-5482	Figural & Church Keys
837	Grubbs	George	Norma	286 Weeping Oak	Shreveport	LA	71106-7682	(318) 797-0128	Openers-Trays-Glasses- Lighters
643	Gruver	Tim	Tonie	129 Oakdale Dr	Zelienople	PA	16063-9309	(724) 452-0196	Old Beer Openers
883	Hake	Ted		PO Box 1444	York	PA	17405-1444	(717) 848-1333	Figural Openers, Anything with Celluloid
887	Hall	Jack	Becky	PO Box 890	Blowing Rock	NC	28605-0890	(828) 295-9326 (Work)	All Types of Openers & Corkscrews
666	Hall	John	Anna	2562 Hill Ct	Sebring	FL	33872-4232	(941) 385-2592 (halann@ct.net)	A-12s
625	Halverson	H Keith	Anne	1528 W 21st St	Merced	CA	95340-3430	(209) 723-1738	All Openers
651	Hanold	Bill	Karen	RR 13 Box 36-B	Bloomington	IL	61704-8962	(309) 828-9252 (bkhanold@aol.com)	All Types
258	Hansen	Harvey	Jo Ann	2300 Jefferson St	Two Rivers	WI	54241-2208	(920) 794-7026	Beer & Coca-Cola Openers
490	Hanson	Arthur	Marge	3028 Piedmont Ave	Duluth	MN	55811-2838	(218) 727-1172	All
606	Hanson	Ray	Pat	2817 Grand Oak Dr	Garland	TX	75044-7859	(972) 530-0400 (rfhanson@metronet.com)	"A" & "B" Openers, Corkscrews
208	Harding	Russ	Sylvia	2665 Tamora Way	Colorado Springs	CO	80919-3570	(719) 599-3378 (russ_harding@h p.com)	
881	Hassenmayer	Jim	Kathleen	311 Sarah Cir	Orange	CT	06477-3330	(203) 795-1116 (jhass252@ aol.com)	Openers

1999 Just For Openers Membership Directory

Mem#	Last Name	First	Spouse	Street	City	State	Zip	Phone (E-Mail)	Specialties/(Sponsor)
13	Haydock	Herbert	Helen	1660 2nd Ave S	Wisconsin Rapids	WI	54494-4705	(715) 423-8995	All Breweriana
748	Hedges	Robert	Leticia	934 W Woodcrest St	Bloomington	CA	92316-1534	(909) 875-3786	All Openers
149	Hibbeler	Ollie	Shirley	298 Highline Dr	Lake Ozark	MO	65049-8924	(573) 365-3875 (hibol@lakeozarks.net)	P-1 Corkscrews / Missouri / One-Of-A-Each-Style
629	Himes	Al	Marilyn	1125 E Sandusky St	Findlay	OH	45840-6477	(419) 422-4622	All Types & Cast Iron
725	Hoesch	Kenny	Ruby	PO Box 299 55 E Main	Zeeland	MI	49464-0299	(616) 772-1683 (solomon@eagle design.com)	Cigar Box Openers, Holland & Zeeland MI Openers (Generally)
261	Hoffman	Ben	Cornelia	213 Simmons Rd	Perkiomenville	PA	18074-9587	(610) 287-8243	Pennsylvania & States Bordering PA Openers & Corkscrews
760	Hoffman	David	Jami	929 W Broad St	Williamstown	PA	17098-9501	(717) 647-7106 (djkhoffm@epix.net)	Any Beer Openers I Can Find
349	Hollinger	Jim		1142 Christensen Ct	Burnsville	MN	55337-1147	(612) 895-0968	Minnesota Openers & Grain Belt
476	Horn	Harry	Rose Mary	3113 Smoky Ct	Sacramento	CA	95826-4147	(916) 362-3590 (rosemh@jps.net)	California & Nevada & All Openers
907	Huber	Mike		176 Suncoast Dr	McCook Lake	SD	57049-4016		
774	Hubers	Harley	Cindy	27472 376th Ave	Harrison	SD	57344-5000	(605) 243-2260	Any Kind of Openers
512	Hufford	Terry	Jan	7147 Parkview Ave	Falis Church	VA	22042-1615	(703) 573-1621 (tth@gwu.edu)	Any Beer Advertising
403	Hupp	James	Anita	6949 Hyde Park Dr	San Diego	CA	92119-2208	(619) 460-6478	Beer / Hotels / Soft Drinks / Around The World / Cast Iron
806	Hurwitz	Edward	Margie	426 Howard St	Northboro	MA	01532-1031	(508) 393-9821	Figural/Whimsical Openers
702	Jacks	Eugene	Doris	29097 Netherton Rd	Newman	CA	95360-9615	(209) 862-2000	Openers of All Kinds
853	Jacobsmeier	Ed		7716 Dunbarton Ave	Los Angeles	CA	90045-1030	(323) 931-1745	Beer & Corkscrews
110	Jantos	Carl	Ruth	7025 Kevin Dr	Bethel Park	PA	15102-3913	(412) 833-4866	Western PA Openers
538	Jarrell	Roger	Janice	1500 Sedwick Rd	Durham	NC	27713-2626	(919) 544-7787	West Virginia, Texas, & Southern Openers & Corkscrews
700	Jarrell	Taylor		1500 Sedwick Rd	Durham	NC	27713-2626	(919) 544-7787	West Virginia, Texas, & Southern Openers & Corkscrews
181	Jay	Norm	Judy	839 James Ct	Wheaton	IL	60187-6344	(630) 690-1565	All Openers & Corkscrews
878	Jenkins	Tom	Betsy	16 Rima Ct	Danville	CA	94526-1959	(925) 838-0935	Openers
213	Johnson	Art	Eileen	155 Hartford Ave E	Mendon	MA	01756-1119	(508) 473-2780 (eejaf@naples.infi.net)	"M-3" "Slide-Out" Openers & "M-73" "Slide-Out" Opener/Corkscrews
445	Johnson	Nick	Renae	4708 Spiser Ln	Wichita Falls	TX	76302-3509	(940) 322-1696 (njohnson@wf.quik.com)	Any Beer Items from Spokane WA and Pacific NW
660	Johnson	Tom	Betty	922 Bailey St	Jackson	MN	56143-1449	(507) 847-2828 (tbj@rconnect.com)	Bottle - Can - Jar Openers
569	Johnson Jr	Art	Nancy	347 E Orange St	Lancaster	PA	17602-2916	(717) 394-4117	All Philadelphia Openers & Corkscrews (Beer, Soda or Whatever)
520	Jones	Odis	Janet	2946 W 7 St	Jacksonville	FL	32254-1908	(904) 695-0643	All Kinds
864	Joseph	Jon	Joanne	1196 Rostraver Rd	Belle Vernon	PA	15012-9802	(724) 929-7723	All Types of Openers
860	Jung	Paul	Joan	PO Box 425	Bechtelsville	PA	19505-0425	(610) 367-0239	M-1 & M-2 & L-1 & Jung Brewery Openers
893	Kaiser	James	Cheryl	59 N Walnut St Ste 301	Mount Clemens	MI	48043-5652	(810) 469-8687 F (810) 469-3778 (kaiserhof@home.com)	Detroit, Mt Clemens & Port Huron Michigan

1999 Just For Openers Membership Directory

Mem#	Last Name	First	Spouse	Street	City	State	Zip	Phone (E-Mail)	Specialties/(Sponsor)
11	Kaye	Ed	Eileen	7077 Cedarhurst Dr	Fort Myers	FL	33919-6703	(941) 590-3068	Type "A-9" Openers (Baseball Players), Beer & Non-Beer
876	Kehring	Erwin	Shirley	8164 N Denmark Ct	Milwaukee	WI	53224-2999	(414) 354-7605	All Openers
321	Keown	Vic	Mary Ann	10547 Mert St	Saint Ann	MO	63074-3433	(314) 428-6343	"M-3"s (Beer & Non-Beer)
539	Kimmons	Mike	Jan	3801 Elledge Dr	Roeland Park	KS	66205-1353	(913) 236-5441	Pre-Pro, Esp Kansas City
727	King	Charles	Karen	32 Amsterdam Ave	Glenmont	NY	12077-3630	(518) 767-2005	Albany, Troy, Schenectady, Cohoes, Amsterdam, Hudson, NY Breweries
627	King	Dennis	Laura	5 Deerwood Tr	Lake Placid	NY	12946-1828	(518) 523-2762	
267	Kirkpatrick	Charles	Janice	295 Leyden St	Denver	CO	80220-5951	(303) 298-9625	Corkscrews
382	Klaassen	Kenneth		2412 E T Ave	Kalamazoo	MI	49002-7538	(616) 323-3192	Corkscrews
703	Knapp	Joe		211-A Berbro Ave	Upper Darby	PA	19082-2014	(610) 352-5055	Pennsylvania, Anheuser-Busch & Root Beer Openers
269	Koch	Bob	Mickey	1510 Ariana St Lot 450	Lakeland	FL	33803-6930	(941) 682-8145	Koch's & Miscellaneous
753	Kopp	Richard	Marty	14419 Woodcrest Dr	Rockville	MD	20853-2336	(301) 460-4272	Beer Advertising Including Openers
721	Kost	Tony		4027 N LeClaire Ave	Chicago	IL	60641-1435	(773) 736-2746	All Beer Openers (Esp. Chicago)
493	Kovarik	Lou	Rosemary	12646 Alswell Ln	Saint Louis	MO	63128-2509	(314) 842-2446	All
909	Krejci	Mike		W19103 Lake St Lot 3	Aniwa	WI	54408-9756	(715) 449-2075	Older Bottle & Can Openers with Brewery Names
433	Kroll	Victor	Jackie	3451 Nighthawk Ct # 433	Punta Gorda	FL	33950-6675	(941) 575-0303 (beer@sunline.net)	Wisconsin Brewery Openers & Corkscrews
880	Krutz	Charles		5603 Colfax Ave	Alexandria	VA	22311-1009	(703) 820-9138	Foreign Openers, Lighters, Blob Tops
514	Kutska	John	Paulette	4334 Du Bois Blvd	Brookfield	IL	60513-2222	(708) 485-1961 (kutska@avenew.com)	Unusual Openers & Other Items of Similar Manufacture
216	Landino	Arthur		88 Centerbrook Rd	Hamden	CT	06518-3400	(203) 281-1085	New England Openers
271	Laraway	Bill	Diane	627 Kenwood Ave	Delmar	NY	12054-1607	(518) 439-2739	All for Albany, Troy, & Schenectady NY & Schaefer
759	Larson	Don	Jackie	213 N Campbell Ave	Beloit	KS	67420-2427	(913) 738-3197 (jlarson@nckcn.com)	Beer, Pop, Cast Iron & Unique Kitchen Type Openers
804	Lendy	David		1296 Seabury Cir	Carol Stream	IL	60188-6027	(630) 289-5692	US Beer & Malt Openers
383	Levesque	Roger	Christine	PO Box 826	South Windsor	CT	06074-0826	(203) 644-9582	Micro Openers
435	Lewis	Sam	Carol	113 Rockwood Dr	Pittsburgh	PA	15238-2333	(412) 963-0827	Cigar Box Openers
892	Lipperd	Gary	Vickie	PO Box 580095	Tulsa	OK	74158-0095	(918) 664-6689	Openers, Coasters, Trays
809	Little	Jack	Helena	9531 W Sandstone Dr	Sun City	AZ	85351-2054	(602) 974-5353	Railroads, Hotels, Motels, Inns
15	Lohmiller	George	Eleanor	2924 Orchard Ave	Grand Junction	CO	81504-5342	(970) 243-3208	All
384	Lorett	Mike	Bobbie	PO Box 28	Conifer	CO	80433-0028	(303) 838-4292 (mloret@nilenet.com)	Corkscrews
62	Lothridge	Tom		31 Pearl St	Bainbridge	NY	13733-1027	(607) 967-8575	All Openers & Corkscrews
743	Love	George	Martha	4301 Forest Plaza Dr	Hixson	TN	37343-5017	(423) 877-6006	Tennessee Openers
218	Love	Jack	Dorothy	3303 Memorial Dr S	Elwood	IN	46036-8323	(765) 552-2369	Beverage-Tourist-Unusual
752	Loy	Greg	Karen	316 Lynwood Ave	Ottumwa	IA	52501-4938	(515) 682-6779	"A"s & "B"s and All Iowa Openers

1999 Just For Openers Membership Directory

Mem#	Last Name	First	Spouse	Street	City	State	Zip	Phone (E-Mail)	Specialties/(Sponsor)
449	Luchsinger	Paul	Anne	1126 Wishart Pl	Hermitage	PA	16148-4410	(412) 346-2331 (ppl@ infonline.net)	Corkscrews-Syroco & Early U. S. Patents
274	Lyons	Tom	Janet	321 Valley Court Rd	Lutherville	MD	21093-6413	(410) 296-0387 (www.tom.lyons.b altsun.com)	Figurals, No Plastic
816	Mahood	Jeff		303 W Elmwood Ave	Mechanicsburg	PA	17055-4126	(717) 766-8055	Beer, Pop, & Some Other
275	Mandzuk	Phil	Judy	340 Morley Ave	Winnipeg, Manitoba	CANA DA	R3L 0Y5	(204) 452-1293	Canadian Only
905	Mann	Bob	Jennifer	2824 Candlewick Dr	Spring Hill	TN	37174-9288	(615) 302-3161 (jenryo@mindspr ing.com)	Brewery & Soda Advertising Bottle Openers
911	Marckwardt	Alton	Beverly	3902 FM 775	La Vernia	TX	78121-4719	(830) 779-6851	Beer & Soda
677	Maxwell	H James		1050 W Blue Ridge Blvd	Kansas City	MO	64145-1216	(816) 942-6300	Kansas City, MO Breweriana and Openers
629	Mayberry	A A		1615 16th St	Auburn	NE	68305-1724	(402) 274-4448	
796	Mayer	George	Terry	10 Library St	Lily Dale	NY	14752-1145		Openers, Cans, Etc
664	McIntyre	W Don		PO Box 52	Friend	NE	68359-0052	(402) 947-6551	Nebraska Openers
153	McKenzie	Elvira		6360 S Jellison St	Littleton	CO	80123-3174	(303) 979-0987	
712	McNary	Robert		14 Apple Tree Ln	Naples	FL	34112-7203	(941) 774-0472	All Types of Beer Openers plus Iroquois Openers
386	Mellen	Ray	Linda	11001 Sevenhills Dr	Tujunga	CA	91042-1442	(818) 352-6409	
866	Mier	John	Margy	80 Woody Ln	Springville	TN	38256-5241	(901) 593-0456	
655	Milano	Hale	Todd (Dad)	506 Spring House Rd	Camp Hill	PA	17011-1454	(717) 737-5067 (toddmilano@cen tralpenn.edu)	"I-7"s (Beer & Non-Beer) & Anything from the Leo Ebert Brewery of Ironton, Ohio
668	Miller	Darwin	Otistian	32 La Canada Way	Hot Springs Village	AR	71909-2658	(501) 922-1615	All Bottle & Can Openers
861	Miller	Robert	Janice	2946 S 16th St	Milwaukee	WI	53215-3723	(414) 384-7837	All Kinds
782	Miller	Scott	Marilyn	2136 Crosscreek Ave	Simi Valley	CA	93063-5000	(805) 583-2856	California & "H-8" Openers
826	Minges	John	Sarah	3304 Grey Fox Trl	Greenville	NC	27858-8493	W(919)756-4303	Pepsi-Cola Collectibles (Pepsi-Cola Club)
732	Mlady	John	Jackie	1506 S 25th St	Omaha	NE	68105-2611	(402) 345-7909	Nebraska Openers, Corkscrews & Breweriana
840	Moldrem	Barney	Leslie	320 Highland Ave	Syracuse	NY	13203-1608	(315) 428-8256 (bmoldrem@ aol.com)	NY State & Minnesota Openers, Esp E-14s
834	Morean	Dan		13 Greenleaf St	Malden	MA	02148-2514	(781) 324-3330	Pre-Pro Boston, MA Brewery Openers
735	Morrison	Bruce	Julie	335 Galliher Ln	Greenville	TN	37743-3409	(615) 639-0897	
450	Moter	Lawrence		10149 Michaels Rd	Woodford	VA	22580-2500	(804) 448-3928 W(804 672-2234	All "E"s (Except E-5s & 20s), "F-5"s, "F-6"s, "F- 9"s, "F-18"s, "F-27"s
899	Muehe	Gary	Diana	7132 Stanford Dr	Bridgeview	IL	60455-2230	(708) 430-5495	Beer & Brewery Related Openers (Cymba WWW)
908	Mueller	Grant	June	345 Country Club Ter	Battle Creek	MI	49015-4655	(gmue345@ aol.com)	Beer Cans & Beer Openers (Country Collectibles)
279	Muma	William	Sherron	9530 Swanbrook Ct	Elk Grove	CA	95758-1305	(916) 684-0170	
867	Musick	Don		119 Green Acres Rd	Clovis	NM	88101-8434	(505) 799-4929	Any Opener or Corkscrew, also Old Pens & Pencils
543	Nantt	Bill		114 Evelyn Ct	Woodbridge	CA	95258-9135		"A", "G", "L", "M", & "N" Types
685	Nash	Abby		172 Bush Ln	Ithaca	NY	14850-1008	(607) 266-0690	Bakelite Openers & Bakelite Everything!
906	Nau	Kurt	Lisa	90 W 14th St	Deer Park	NY	11729-4022	(516) 595-3660 (knauf@aol.com)	Southern States Beer Openers (John Stanley)
581	Neas	Paul	Alma	4953 Vera Cruz Rd	Center Valley	PA	18034-9734	(610) 797-5759	All Kinds

1999 Just For Openers Membership Directory

Mem#	Last Name	First	Spouse	Street	City	State	Zip	Phone (E-Mail)	Specialties/(Sponsor)
611	Newmark	Michael	Gayle	549 Buxton Ave	West Hempstead	NY	11552-2832	(516) 485-0509 (miken549@yahoo.com)	Beer Only (US)
742	Newsome	L J	Walter	PO Box 14231	Phoenix	AZ	85063-4231		Dairy Openers & Cigar Box Openers
855	Nichols	Jim	Cindy	3178 Plantation Cv	Memphis	TN	38119-8910	(901) 753-1518	Corkscrews & Wine Memorabilia
67	Nowicki	Pete	Nancy	1531 39th Ave	San Francisco	CA	94122-3015	(415) 566-7506 (portfire86@aol.com)	Hamm's
746	Offchinik	Robert		504 Florida Pky	Kissimmee	FL	34743-7510	(407) 348-7254	Wall Mounts-Corkscrews-Bartenders Knives
791	O'Leary	Fred	Sue	6149 Shadygrove Dr	Cupertino	CA	95014-4645	(408) 996-3101	Corkscrews
897	Olexey	Ken	Debbie	106 S Logan Ave	Bryan	TX	77803-2449	(409) 775-8925 (kmjo@tca.net)	Mostly Starr X
741	Olson	Floyd	Dale Louise	18226 182nd St	Tonganoxie	KS	66086-5143	(913) 724-3020	Flat & Unusual
901	Olson	Keith	Karen	17021 Oak St	Little Falls	MN	56345-6443	(320) 632-4066	
223	Orth	Dennis	Mary	4210 S Lake Five Dr	Colgate	WI	53017-9764	(414) 628-3933 (parothds@execpc.com)	
126	Osborn	Jim	Mary Jo	320 Dobson St Apt B	Carterville	IL	62918-1549	(618) 985-6935 (jro320@mychoice.net)	Types: A,B,L-4 and Corkscrews, Illinois Openers
800	Ostrow	Ken		58 Cedar St	Newton	MA	02159-1113	(617) 527-4705	New England Paper Label Bottles & Breweriana Dealer
477	Owen	Steve	Candy	1175 Elkins Lake	Huntsville	TX	77340-7321	(409) 295-3329 (steveo@lcc.net)	All "O-5"s
719	Paczkowski	Joe	Rita	317 Medford Lakes Rd	Tabernacle	NJ	08088-9018	(609) 268-9390	Eastern Pennsylvania, NYC & New Jersey-"H-2", "H-3", "I-7", "E" & "C" Types
451	Paradi	Joseph	Monika	670 Meadow Wood Rd	Mississauga, Ontario	CANA DA	L5J 256	(905) 823-3754 (paradi@ie.utoronto.ca)	Corkscrews
486	Pattie	Bill	Lyla	37050 SE 89th St	Snoqualmie	WA	98065-9786	(425) 888-2495	Montana & "One-Of-EachType"
776	Patton	John	Eileen	701 Montara Rd Spc 208	Barstow	CA	92311-5732	(760) 252-4920	"B-24" "C-19" "E" "G-1" "H-3" "I"
833	Peabody	Kathy		1665 Jamie Cir	West Linn	OR	97068-4230	(503) 650-8456	
726	Pearis	Gibson	Dana	315 Berry	Belton	MO	64012-1977	(816) 331-2285	Figurals
910	Pehling	Darlene	Willard	PO Box 665	Walker	MN	56484-0665	(218) 547-3173	
862	Pelletier	Gary		13141 Finch Way	Apple Valley	MN	55124-8056	(612) 432-3905	Soda & Minnesota Beers
69	Peters	Roger	Bette	20522 Hudson St	Burney	CA	96013-4187	(916) 935-2308	Openers & Corkscrews
750	Petro	Andrew	Linda	39 Smithfield Vlg	East Stroudsburg	PA	18301-9054	(717) 421-4486	All Openers Esp "Coal Region" of PA
871	Pettina	Stephanie		1027 Farragut St	Pittsburgh	PA	15206-1743	(412) 362-5780	All Openers
811	Pinney	Dave		1766 Red Barn Rd	Encinitas	CA	92024-3033	(760) 753-8151 (davedith@tmisnet.com)	Metal Beer & Soda Openers
754	Pitsch	Ralph	Ruby	2814 Wedemeyer St	Sheboygan	WI	53081-6738	(920) 458-2525	Beer & Novelty Openers
875	Pommerville	Robert		RR 1 Box 3-1	Oswegatchie	NY	13670-9722	(315) 848-3701 (ftroop@northnet.org)	All Kinds
842	Post	Bob	Sara	4516 S Pin Oak Ct	Sioux Falls	SD	57103-4967	(605) 339-0269	Brewery Bottle Openers-US
831	Preacher	Hugh	Elayne	6052 Wilmington Pike # 126	Centerville	OH	45459-7006	(937) 455-0302 (Inusgmac.hprea c01@eds.com)	A,B,C,D,E,(G,H,Some),I, J & Soda

1999 Just For Openers Membership Directory

Mem#	Last Name	First	Spouse	Street	City	State	Zip	Phone (E-Mail)	Specialties/(Sponsor)
72	Pugh	Sass		PO Box 380	Miller	SD	57362-0380	(605) 853-3835	All Openers & Corkscrews
572	Queen	Harold	Ida "Boots"	1001 Centre Ave	Jim Thorpe	PA	18229-1015	(717) 325-2612	All PA Openers, "C", "M-3"s, "I-7"s, "Q"s, "M-19"s, Micro Openers, "A-21" Beer & Non-Beer
713	Quilliam	Mike	Julie	65 Maria Dr	Great Falls	MT	59404-3769	(406) 761-1953	All Montana Beer
694	Quimby	Chris		3405 Yeoman Ave	Vancouver	WA	98660-1176	(360) 693-3982	Soda Openers
734	Ransom	John	Norma	PO Box 97	Osborn	MO	64474-0097	(816) 675-2375	Openers, Labels, Caps
670	Readel	Jerry	Barbara	15622 N 57th Ave	Glendale	AZ	85306-3010	(602) 439-1788 (breadel@aol.com)	All Types of Openers
470	Redl	Alex	Peggy	1009 Elk St	Beatrice	NE	68310-3026	(402) 223-2554	Openers From Nebraska & Ohio, Esp. Akron, OH
857	Reeder	Thomas		20 E Prospect St	Hopewell	NJ	08525-2041	(609) 466-1379	Northeast Regional, Cast Figural Openers
358	Rees	Carl	Pat	11366 N Rio Vista Rd	Pocatello	ID	83202-5315	(208) 237-2464	Beer & Soda Openers All Types
563	Reynolds	Charlie	Judy	2836 Monroe St	Falls Church	VA	22042-2007	(703) 533-1322	Figural Openers-Any I Do Not Have
640	Ribbke	Harry	Lorna	3731 Crestview Dr	Cottage Grove	WI	53527-9533	(608) 839-5449	All Types
671	Ricicki	Tony		9 Laird Ter	Somerset	NJ	08873-5013	(732) 873-0301	"I-7"s
777	Roche	John		2815 N 58th St	Scottsdale	AZ	85257-1009	(602) 949-9173	New York Openers
359	Roe	Lehr	Joan	160 Penfield St	Dundee	MI	48131-1129	(313) 529-2359 (lehr@dundee.net)	Corkscrews
495	Ruckstuhl	Jon	Lorraine	1646 Treehouse Ln N	Roanoke	TX	76262-8947	(817) 337-0101 (lbr9999@aol.com)	Pre-Pro Paper Label Bottles, "E" Openers, Matchbooks
158	Santen	Art	Dorothy	6126 McPherson Ave	Saint Louis	MO	63112-1104	(314) 863-6798	Everthing That Opens Anything
691	Schaefer	Ed	Kelly	366 Bassett Rd	Bay Village	OH	44140-1813	(216) 871-0449	Schaefer, Cleveland OH, Koch, Jamestown NY, Chautauqua NY, & Independence of Monessen, PA
16	Schele	Jerry	Kathleen	3744 Pineview Dr	Fort Wayne	IN	46815-4724	(219) 483-6350	U.S. Beer Openers & Corkscrews
442	Schiffers	George		882 Huron Ave	San Francisco	CA	94112-4038		Bottle Openers
582	Schmeisser	Ray	Fran	RR 5 Box 223A	Caldwell	TX	77836-9516	(409) 272-2008	"E" Type Openers (Mainly)
508	Schmitt Jr	Conrad	Kay	406 Eastbrook Ln	O Fallon	MO	63366-1829	(314) 272-2814	Figurals & Unusual Types
669	Schrank	Bill		1926 S 14th	Manitowoc	WI	54220-6108	(920) 686-1182	Hamms & Kingsbury Items
688	Schuldheisz	Lawrence		851 Doss Ave	Orlando	FL	32809-5880	(407) 855-7731	Beer Advertising & Unusual
338	Schwab	Ed	Betty	10187 Cabin Ct	Mechanicsville	VA	23116-9409	(804) 746-1924	Beer Openers-Bottle Caps
630	Schweigl	Leonard	Dolores	2350 S 23rd St Lot 1054	Manitowoc	WI	54220-6308	(920) 684-3707	Whatever
680	Schwimmer	Mike		325 E Blodgett Ave	Lake Bluff	IL	60044-2112	(847) 295-1901	Cigar Box Openers & Bottle Openers
443	Sell	Bill	Althea	457 Holly Ave	Saint Paul	MN	55102-2205	(612) 227-9299	Advertising Cigars
898	Sepenoski	John	Rita	PO Box 120	Peconic	NY	11958-0120	(516) 765-3914	Corkscrews
902	Shannon	Michelle	Brendan	3200 Garfield Ave S Apt 104	Minneapolis	MN	55408-3628	(612) 823-4800 (shan0089@tc.umn.edu)	Openers
175	Sherk	Lawrence		PO Box 98094 970 Queen St E	Toronto, Ontario	CANA DA	M4M 1J0	(416) 465-3386	All Types
18	Sherman	Don	Ruth	438 Mavis Dr	Los Angeles	CA	90065-5054	(323) 225-7870	All Canadian Beer Openers & Breweriana
									"A" & "B" Type Openers & Corkscrews

1999 Just For Openers Membership Directory

Mem#	Last Name	First	Spouse	Street	City	State	Zip	Phone (E-Mail)	Specialties/(Sponsor)
757	Sherman	Scott	Cindy	W5268 Quarry Rd	Appleton	WI	54915-8330	(920) 954-1168	Metal Beer Advertising Openers
615	Sheward	John	Diana	208 Omalee Dr	Xenia	OH	45385-1936	(937) 376-1518 (jsheward@wright.edu)	Pabst, Ohio Breweries, Soft Drinks, Hotels
885	Short	Marvin		1614 7th St SE	Roanoke	VA	24013-2704	(540) 343-8890	Roanoke, VA Openers
499	Shoulter	Jim		9 Shawnee Woods Rd	Wheeling	WV	26003-1746	(304) 277-4361	Glasses-Mugs-Steins-Signs-Trays
836	Shultz Jr	Bren	Helen	1111 Walnut St	Columbia	PA	17512-1362	(717) 684-6869	All Beer Openers
672	Skelton	Allan	Karen	1055 86th Ave W	Duluth	MN	55808-1414	(218) 626-2480	"A" & "B" Openers
832	Skiba	Scott		156 Overlook Dr	Clinton	NJ	08809-9999	(908) 730-0931 (irwin@postoffice.ptd.net)	Figurals, Corkscrew Figurals, Bottle-Caps
410	Smith	Henry	Linda	5459 Woodhaven Dr	Cincinnati	OH	45248-5113	(513) 451-2641	Cincinnati & Hamilton OH, Covington & Newport KY, All Breweriana & Soda Openers
678	Sommer	Robert	Janet	413 Scott Dr	Silver Spring	MD	20904-1065	(301) 384-5456	Drink, Hotel, Beer Advertising Can & Bottle Openers
868	Sorrel	Glen	Deanna	10605 Saber Creek Cv	Austin	TX	78759-6812	(512) 483-9492	Key Shaped Openers
176	Stahly	Bob	Marge	1508 E Bridge St	Streator	IL	61364-3114	(815) 672-4323	Wall Mounts
339	Stanley	John	Pat	3712 Sunningdale Way (Mailing PO Box 64 Chapel Hill NC 27514)	Durham	NC	27707-5684	(919) 419-1546 (jfo@mindspring.com or prjrs@email.ais.unc.edu)	"A" & "B" Types, Southern US, Hoster-Columbus, & Fink Openers & Corkscrews
184	Stawarz	Henry	Marge	RR 2 Box 131	Rushville	IL	62681-9637	(217) 322-6834	Beer & Soda Openers All Types
839	Steffens	Fred	Alberta	2410 Cleveland Rd	Sebring	FL	33870-1565	(941) 471-3105	All Types-Mostly Misc & Multi Purpose & All Types of Corkscrews
667	Steinke	Tom	Sharon	155 S Charles St	Waukesha	WI	53186-6201	(414) 542-0252	Beer-Soda-Figurals
896	Stinson	Don	Lynda	RR #1	Balderson, Ontario	CANADA	K0G 1A0	(613) 267-5462 (stinson@perth.igs.net)	Wall Mounts-Mostly Starr X
617	Stork	Jim	Ruth	7504 Parliament Ct	West Chester	OH	45069-2325	(513) 755-8670	Ohio, Sodas, & Figurals
225	Striny	Ted	Mil	814 W Minnehaha Ave	St. Paul	MN	55104-1627	(612) 488-1674	Sports Schedules & Minnesota Breweriana
873	Stroble	Al	Karen	608 Cortland Dr	Lake Zurich	IL	60047-2365	(847) 438-9051 (astrobl@amfam.com)	Figural & Beer Openers
661	Sutton	Lewis "Lou"	Rita	PO Box 1112	Mechanicsville	VA	23111-6112	(804) 730-0449 (deals2go@aol.com)	Virginia Openers
769	Swanstone Jr	Donald	Julie	601 Main St	Dearborn	MO	64439-9111	(816) 992-8819	Corkscrews
626	Teggatz	Bonnie		427 G Ave NW	Cedar Rapids	IA	52405-2643	(319) 368-8348	Kitchen Openers
515	Tewksbury	Ralph	Linda	84 Wildwood Dr	Parkersburg	WV	26101-9783	(304) 863-3627	Beer Can Openers
363	Thompson	Thom	Frances	123 Shaw Ave	Versailles	KY	40383-1157	(606) 873-8787 (606) 255-2727 (864) 225-1588 (rail@carol.net)	Coca-Cola Openers-Vintage & Lexington, KY Brewery Openers & Opener Literature
852	Thoms	Ernst	Jeanette	206 Windemere Way	Anderson	SC	29625-5267	(360) 675-4575	All Openers
789	Tozer	L V	Sylvia	1290 SE 8th Ave	Oak Harbor	WA	98277-4050	(360) 675-4575	Beer Openers
895	Treadway	Gerry	Barbara	410 Strasburg Ave	Parkesburg	PA	19365-1029	(610) 857-3677	Old Bottle Collectibles
904	Van Wagner	Jack	Beverly	409 Blackstone Ave	Willow Springs	IL	60480-1506	(708) 839-8843	(Dan Morean)
785	Vandemark	Bud	Betty	3830 Cambria	Elida	OH	45807-9792	(419) 642-3281	All Types of Bottle Openers & Corkscrews
891	Vannoy	Joe	Peggy	5950 E Pentecost Rd	Liberty	IN	47353-8853	(765) 732-3458	

1999 Just For Openers Membership Directory

Mem#	Last Name	First	Spouse	Street	City	State	Zip	Phone (E-Mail)	Specialties/(Sponsor)
851	Veley	Gordon	Melinda	921 Snyder Hill Rd	Ithaca	NY	14850-8701	(607) 539-6994 (bambrew@aol.com)	Beer-Can & Bottle
500	Vifquain	Brad	Lori	PO Box 30244	Mesa	AZ	85275-0244	(602) 807-3609	Everything
632	Virostek	Donald		3746 Margate Rd	Pittsburgh	PA	15221-3914	(412) 241-5894	"M-3's"
547	Vlossak	John	Doris	1044 E Eldorado St	Appleton	WI	54911-5568	(920) 739-2789	Williamson Corkscrews (Esp Wire Ones with Knives or Brushes), Also Corkscrews with Speedworms (Advertising not Necessary) (Will Trade or Buy)
162	Vollrath	Verne	Laverne	218 S Lexington Dr	Janesville	WI	53545-4322	(608) 752-5708	U.S. Beer & Malt Openers
858	Voltz	Donald	Kathleen	15738 Ridge Park Dr	Houston	TX	77095-2647	(281) 463-4709 (zerovoltz1@aol.com)	All Kinds No Preference
227	Wagner	Paul	Stella	944 Hale St	Pottstown	PA	19464-4034	(610) 326-5419	PA Beer & Soda Openers & One-Of-Each-Type
228	Waldo	Harriet		27152 Potato Sack Rd	Rocky Mount	MO	65072-9054	(573) 392-3186	"H"s and Any Missouri
559	Walker	Don	Marcia	2294 Terrace Dr N	Clearwater	FL	34625-2743	(813) 799-4253	Beer Corkscrews & Beer Flat Figurals
364	Watkevich	Frank		306 Cottage St	Athol	MA	01331-2950		Beer Can & Bottle Openers
820	Weatherhead	John	Illona	10630 Haynes Forest Dr	Alpharetta	GA	30022-4812	(678) 393-8501	Wooden Bottle Openers
728	Westall	Jack	Wanda	5945 Shallow Creek Dr	Millford	OH	45150-1524	(513) 248-1127	All Beer Opener Types (Except Wall)
684	Westland	Deane	Kristi	1612 S 13th Ave	Saint Charles	IL	60174-4504	(630) 513-6090	Bud-Neons-Chicago
583	Whelan	Don	Cora	1200 W Maple St	Savannah	MO	64485-1857	(816) 324-3603	Schlitz, Types, Missouri Breweries
618	White	Herb	Polly	3216 Jamaica Blvd S	Lake Havasu City	AZ	86406-6207	(520) 680-7762	"E-11" & "E-14"
296	Wilcox	Darwin	Ellen	8495 Croix Trl	Roscoe	IL	61073-9158	(815) 623-2255	Advertising Openers
488	Williams	Don	Diane	1022 Diablo Rd	Danville	CA	94526-1924	(925) 831-1783 (plumpjack2@yahoo.com)	General Breweriana
365	Williams	Scott	Ursula	11601 Tissel Hollow Rd	Fairfax	IA	52228-9789	(319) 846-2919	Types "A", "B", "I-7", "I-17", "B-24", Wooden Handle Corkscrews, Iowa Beer Openers
510	Willing	Kenneth	Betty	3841 W Bass Creek Rd	Beloit	WI	53511-9022	(608) 752-1387	Most Beer Openers Esp Wisconsin & Surrounding Areas
326	Wisconsin State	Historical Society		816 State St	Madison	WI	53706-1488		
143	Wulff	Rod		623 Fern Way	Eldersburg	MD	21784-8516	(410) 795-0771	
830	Yates	Paul		2215 Northtowne Dr	Findlay	OH	45840-2869	(419) 420-1902	All Openers
314	Young	Joe	Jackie	36 S Weston Ave	Elgin	IL	60123-6036	(847) 695-0108 (istamp2@email.msn.com)	Corkscrews & Tin Can Openers
342	Zanghi	Tony	Cathy	2225 Deer Trail Rd	Coopersburg	PA	18036-9069	(610) 346-8232 (anthony.zanghi@conrail.com)	Collect Pennsylvania Small Towns: A & B Type Openers, Blob Top "Squat" Bottles, and Beer Labels (Pre-Pro and IRTP)
886	Zeppenfelt	Mark	Rose Ann	4881 Cypress St	Wescosville	PA	18106-9412	(610) 391-0271	Beer Openers-Mostly PA
525	Ziegler	Terry		698 Huffs Church Rd	Alburtis	PA	18011-2226	(610) 845-7102 (ziggie43@aol.com)	All Types of Openers

JUST FOR OPENERS

21TH ANNUAL CONVENTION REGISTRATION
APRIL 21-25, 1999

QUALITY INN GULFCOAST

2555 N. Tamiami Trail
Naples, FL 33940

Please Make Hotel Reservation by Calling 1-800-330-0046

(Rate is \$40.00/Single/Double/Triple/Quad)
(Guaranteed Reservation must be made 1 month prior to Convention)

MAKE NAPLES YOUR NEXT STOP ON THE JFO CONVENTION TRAIL.

MEMBER REGISTRATION FEE - \$30.00
(INCLUDES HOSPITALITY ROOM, CONVENTION OPENER & ONE SHOW TABLE)

NAME _____

ADDRESS _____

CITY _____ STATE(PROVINCE) _____ ZIP _____

EVENING PHONE NUMBER _____

DATE YOU WILL ARRIVE _____ APPROXIMATE TIME _____

DATE YOU WILL LEAVE _____ (NEED TO KNOW FOR PLANNING PURPOSES)

HOW WILL YOU ARRIVE? CAR _____ PLANE _____ TRAIN _____ OTHER _____

NAME(S) FOR CONVENTION BADGE: _____

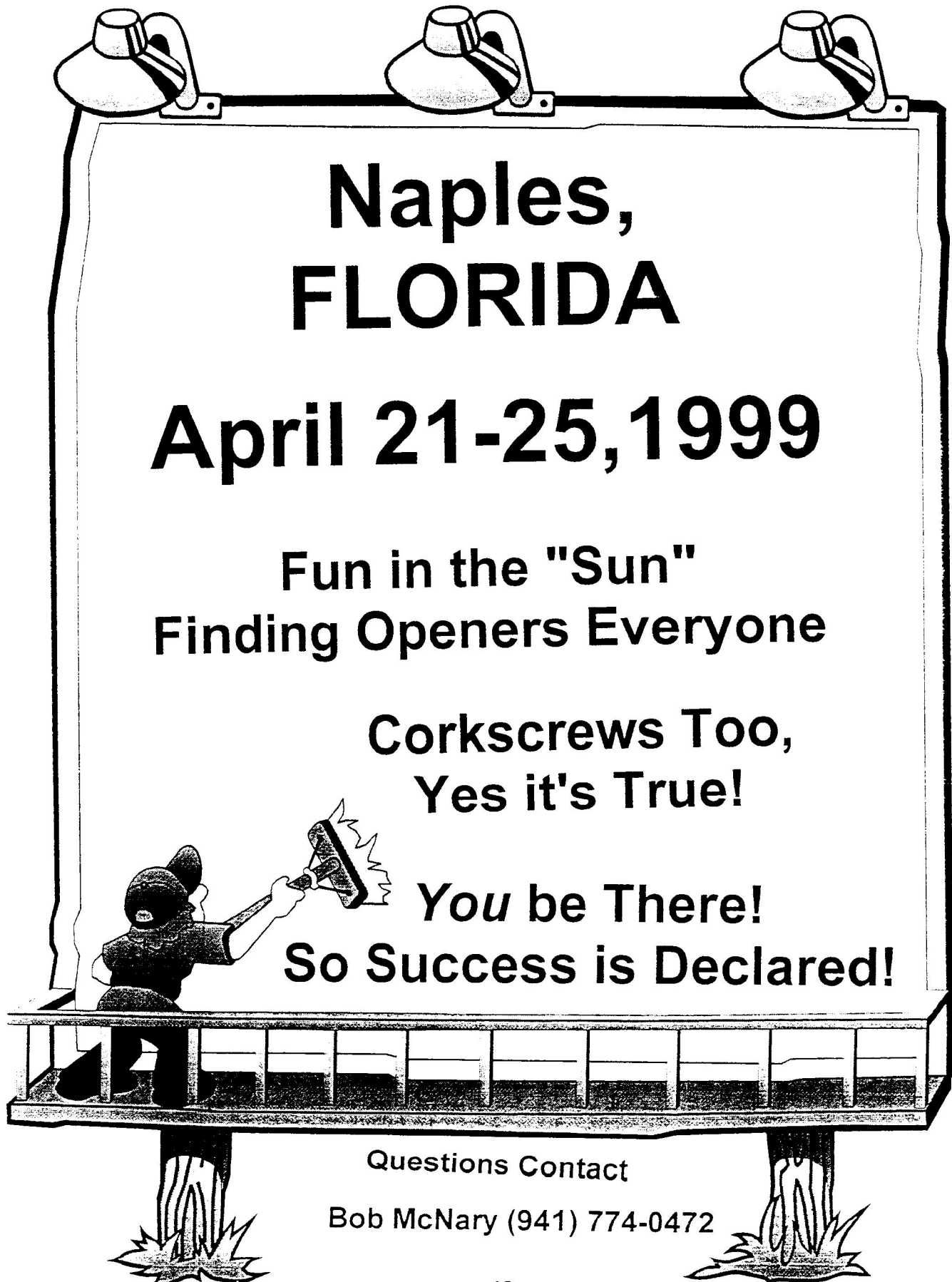
Do You Want to go on the free Sanibel Island Brewery Tour? _____

Each Member is allowed one guest on the tour, will you be bringing a guest? _____

MAKE CHECKS PAYABLE TO John Stanley FOR 1999

John Stanley
PO Box 64
Chapel Hill, NC 27514-0064
PHONE (919) 419-1546

***** **BRING A DISPLAY !!!** *****



**Naples,
FLORIDA**

April 21-25, 1999

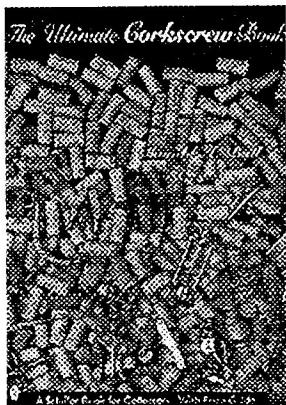
Fun in the "Sun"
Finding Openers Everyone

**Corkscrews Too,
Yes it's True!**

You be There!
So Success is Declared!

Questions Contact
Bob McNary (941) 774-0472

Corkscrew Books



The Ultimate Corkscrew Book by Donald A. Bull (Published January, 1999)

The Ultimate Corkscrew Book is divided into four parts:

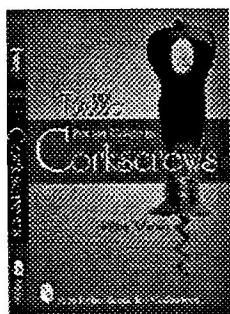
- * Eclectic Corkscrews
- * Figural Corkscrews
- * Corkscrew Knives
- * Miscellaneous

The book features:

- * 320 oversize (9" x 12") pages
- * 1 1/4" Thick (a BIG BOOK!)
- * Weight: 5 Pounds
- * Hardcover
- * 744 Color Photographs
- * 3746 Corkscrews and go-withs
- * 82,000+ words
- * Price Guide

In the Foreword, corkscrew expert Ron MacLean writes:

"This volume is the armchair guide to corkscrews. By perusing the 3700+ illustrated and documented examples, it is possible to gain an understanding of the diversity and creativity that occurred in the past several hundred years. Perhaps this book should more correctly be named 'Everyman's Guide to Corkscrews' as it covers the entire range of this twisted hobby! The wisdom contained within these covers is mind boggling in both depth and scope. Don Bull has succeeded in accurately cataloging and illustrating a variety of objects so diverse that many lesser mortals would have seen the task as impossible. His text covers a broad variety, from items of quantity to those of quality, from the mundane to the exquisitely rare. This text will open the eyes of every devotee, from the novice to the true addict. In the end it may even cause the odd collector to abandon the search as a hopeless pursuit, but for most of us it will revitalize our energy and provide the motivation to hunt with even more fanaticism!"



Bull's Pocket Guide to Corkscrews by Donald A. Bull (Published March, 1999)

The book features:

- 190 (6" x 9") pages
- Softcover
- 200 Color Photographs
- 942 Corkscrews with values

The pocket guide is a great gift for friends, relatives, and pickers. Also, keep one in your glove compartment for trips to antique shows and fairs. The Pocket Guide is ideally suited for the novice corkscrew collector who wants an overview of the various types of corkscrews and their values. The more serious collector should consider *The Ultimate Corkscrew Book*.

ORDER FORM

<u>Quantity</u>	<u>Title</u>	<u>Price Each</u>	<u>Total</u>
_____	The Ultimate Corkscrew Book	\$89.95	_____
_____	Bull's Pocket Guide	\$19.95	_____
_____	Virginia Residents add 4.5% Sales Tax		_____
_____	Shipping Charges	See below*	_____
_____	TOTAL ENCLOSED:		_____

JFO Special
63.00
16.00

*Check desired mailing method and add to total (1/2 amount if only ordering Pocket Guide):

___ U. S. Printed Matter \$3.00; ___ U. S. Priority \$8.00; ___ International Sea \$12.00; ___ International Air \$35.00

NAME: _____

ADDRESS: _____

CITY / STATE / COUNTRY / POSTAL CODE: _____

Non-USA residents please remit using an International Money Order or U. S. Dollar traveler's check only. All payments must be drawn on a U. S. bank. Make checks payable to BULLWORKS.

Mail order to: Bullworks, c/o Donald A. Bull P. O. Box 596, Wirtz, VA 24184, USA

Tel. 540-721-1128, Fax: 540-721-5468, email: corkskrue@aol.com, website: <http://members.aol.com/corkskrue/index.htm>

Here are a few unsolicited comments on The Ultimate Corkscrew Book:

Christopher Sykes, England: I am delighted to let you know the "The Book" arrived this morning and it looks just WONDERFUL ~ Congratulations. Snow is falling thick and fast here in Woburn, so to open the package was like letting in a ray of sunshine!!

Maarten Van den Broeck, Belgium: Some days are great but some are even better. And then you have days on which the postman delivers you a book from Virginia. Congratulations with this collector's reference work, which is truly a delight.

Cindy Taylor, Massachusetts: Holy Toledo, WHAT A GREAT BOOK! Awesome photography! I'm thrilled with my purchase! What else can I say?

Jens Arnbjerg, Denmark: I have received the nice book - what a fantastic book to look and compare what I have and what I want to get.

Nick Hunt, Australia: The name says it all. It IS the Ultimate Corkscrew book. Very, very interesting and still seeing corkscrews that I haven't seen before, fantastic. You must have put in a lot of work in, over a long period. The whole corkscrew fraternity will be very grateful.

Bruce Levinson, Missouri: Congratulations on the wonderful book. I am most impressed: great photos, the best variety and superb commentary. Enclosed is an order for another book I would like to give to a friend.

Bob Brown, Georgia: It is a great book, and I am truly impressed with the quality of the photographs.

Dean Walters, California: I received your wonderful new book yesterday, and have been enjoying it since. It did turn out very nicely.

John & Martha Morris, Connecticut: I received your "book" today and was truly impressed. Very nice job!

Edward Wolffe, Georgia: Sent an award entitled "You done real good award" - in considerate and gratitude for efforts above and beyond I would like to thank Don Bull for slaving to put together The Ultimate Corkscrew Book, THE paradigm corkscrew book to end all corkscrew books.

Sandra Emme, Maryland: Book received today. Will open it later I know I won't want to put it down! Congratulations!

Larry Gralla, Nevada: Great book with wonderful photography.

Michael Sharp, California: Corkscrew book in a box....It was great fun to get your corkscrews in a ups box!!!! I have lost a little sleep lately trying to digest the whole book. Fine reading and feast for the eyes.

Shirley Chesney, Texas: Received your book on Tuesday. It's GREAT! I especially like having price-ranges. I usually send all the corkscrews and books that I buy to my brother for his collection, but I think I will just keep this book for my own reference. You did a great job.

Lynne Balvin, California: What a beauty. This book is more than expected.

Don Minzenmayer, Texas: Your book arrived about dark last night. Haven't gotten anything done since. Great job. Love it !!!

John Cunningham, Australia: Congratulations on the great book that safely arrived to me yesterday. For me it is the most useful corkscrew book yet published!!!

Frank Ellis, England: It's all your fault that I was late for work. But then I guess I should not have sat enjoying myself reading my new book over breakfast. Well done - it is splendid. It will take me a while to get through it all, let alone absorb the details. A highlight this morning were the large Clough medicine bows with decorative imprinting - I've never seen them before.

John Cornell, Florida: Your book arrived yesterday and I could not put it down. You are to be congratulated for such a wonderful job of putting all the categories together, pricing the individual pieces, researching the backgrounds of the various types and patenting activities, etc. I believe I can speak for the other collectors in saying, "Thank you for making our lives richer with the knowledge you provided us with in this marvelous compilation of corkscrews and history." Reading it made my day; excuse me for now, I have to get back to reading The Ultimate Corkscrew Book.

Judee Korta, Minnesota: My husband received your wonderful book yesterday. I have not had a conversation and he has not looked at me since receiving it. I want you to know that this book may destroy my marriage!!!! The book is wonderful and everything you said it was going to be. I just wanted you to know how much we both (yes I looked at it and was hooked) enjoy it.

Richard Neumann, California: I came home yesterday and "THE BOOK" was here. I expected a good product from you - but this is GREAT. Well organized etc. Really a meaningful contribution to the field. Thanks.

Owen Paulson, Nebraska: I received your book on Tuesday. It'll be a great reference book for my existing collection and for future purchases. Thanks for taking the time and effort to make this book.

Skip Garrison, Florida: WOW!!! What a book. All Marge has seen of my head is the top after the book arrived.

Philly Rains, Arkansas: It is the most beautiful thing I've ever seen.

Joel Goodman, Massachusetts: Is it a book or the Bible? Congratulations Don! I have just quickly thumbed through it and commend you on an excellent effort

Fred Kincaid, Vermont: Well about 20 minutes ago UPS dropped it off -WONDERFUL!! Jackie liked pages 206 and 207. I may know everything when I finish with this one.

Per Reichborn, Connecticut: We thank you for that beautiful book. I had no idea it was in such a grand impressive format. Quite a piece of work. Congratulations.

Herb Danziger, Michigan: What a great job you did. And several days later he writes: I am still looking forward to looking at your book in detail. So far I can't get it out of Camille's (Herb's wife) hands. She is reading every word and appears to find it fascinating.

Donald Squair, Pennsylvania: It is a snowy day here in Bethlehem, PA but it has been considerably lightened up by receipt of your heavy, well illustrated Corkscrew Book. It is a masterful piece.