



JUST FOR OPENERS

PO Box 64 Chapel Hill, NC 27514-0064 (919) 419-1546
Past Editors Don Bull (1979-83) Ed Kaye (1984-1988) Art Santen (1989-1993)

Membership Renewals / Annual Dues \$20.00

If the label on your Newsletter Mailing Envelope has an Expiration Date of 06/30/98, please pay your dues now. A membership renewal card should be enclosed. Other members please verify the expiration date shown on your mailing label. If you do not agree with the date please notify me.

1998 Convention San Francisco, CA (20th JFO Convention) (April 22nd to 26th 1998)

We have 30 official registrations. It is not too late to come to San Francisco. Just call the Hotel and make your reservation (1-800-227-3346). You should be able to still get the \$80 room rate. The convention itinerary is below. We have three convention activities planned. A group tour of the Anchor Steam Brewery Friday at lunchtime (Anchor Steam will provide dogs and chips for lunch as well as beer). Friday afternoon we will have convention auction. Thirdly we will have the public show Saturday from 8:00 to 2:00. If you have any questions about anything do not hesitate to call either John Cartwright or me. I hope everyone has a safe trip to San Francisco and may El Nino be kind to us. When checking into the hotel please find out where everyone is staying and request to be placed close to other members. The hotel is 17 floors and they have promised to try and keep our rooms close together.

Convention Itinerary

Wednesday April 22rd	Early Arrivals & Room-To-Room Trading
Thursday April 23th	Arrivals & Room-To-Room Trading
Friday April 24th	Room-To-Room/Anchor Steam Tour (10:30-2)/Auction (3-6)
Saturday April 25th	Trade Show (8-2)/Group Dinner (Possibly)
Sunday April 26th	Go Home and Start Getting Ready for Naples in 1999

Please remember to bring a display. I have changed the rules for this year's "Best In Show Award". Instead of being the best new beer opener "New Discovery", I want everyone to bring their favorite opener or corkscrew for the contest. It can be an item you have just picked up or something you have had forever. Just bring it and of course try to bring a regular display as we will have the normal first, second and third.

Soda Handbook Due Out Sometime

Unfortunately I am still working on the Soda Handbook. Hopefully sometime this summer it will be completed. Your patience is appreciated.

Christie's South Kensington Corkscrew Auction April 21st 1998

Please call 1-800-395-6300 to order the latest catalog. Cost is about \$22 for this one a fall auction. Even if you don't buy anything the catalog makes a valuable resource for pricing.

The Blue-Gray Breweriana Show February 13-15 Fredericksburg, VA

The highlight of winter collecting for me is attending the annual Blue-Gray Breweriana show. Once again this was a good show for adding to my collection. Just like last year I would be spending Thursday night at Larry Moter's house so we could work on another big trade. I arrived Thursday afternoon about 4:00. Larry and several other JFO members were already patrolling the hallways. Members present included Dick Kopp, Larry Moter, Fil Graff, Mark Barren and Lou Sutton. Also present was JFO member and breweriana dealer Ken Ostrow. He said I would probably be spending some money with him. The comment made me feel real good. Ken had an A-59 Providence for sale and like the A-60 Narragansett he sold me last year the price was \$150. I was a happy buyer as it completed my collection of the "Big 3 Rhode Island Figurals" (A-37 Hand, the A-59 and A-60). He also had a real unusual M-19 for sale advertising C&C Soda. The unusual part was that end opposite the opener end was shaped like a cone top can (shown on page 16 of the April 1997 JFO newsletter).

After buying these 2 openers from Kenny I figured it couldn't get any better. It wasn't better but it was good when I bought a P-26 A-B knife dated 1900 with the stanhope intact for \$110. By now I was ready for supper so Larry, Lou and I went to Larry's favorite BBQ place. As always the meal was good. Afterwards I turned up a few miscellaneous openers and then it was time to go to Larry's house. Once again Larry had some dynamite traders and they were an A-19-2 Lone Star and a D-11-1 Hagerstown. I had some pretty good "E"s for him and we completed a multi-opener trade pretty fast. I checked out part of his collection after the big trade and we turned in about midnight.

Larry and I were back at the hotel the next morning at 9:00. I spent most of the morning walking around with Lou Sutton checking out rooms. This was the biggest Blue-Gray Show ever with close to 200 rooms being sold out. The best pieces I found were a P-34 Schlitz and a mint M-3-29 Victor both of which came from Ken Ostrow. I ended up passing the P-34 along to Don Whelan for what I had paid for it. It is a pearl handled knife and this one had the original leather case. After an afternoon nap it time for Mark Barren and I to get down to some trading. I had two items he wanted, a B-21-545 Briggs (VG) and a P-90-2 Bartels (EX), while he had several pieces I wanted. Unlike trading with Larry the night before, this trade took a couple of hours. Mark ended up giving me an A-42-16 Port Washington (EX), a B-7-2 Bartholomay (Fair), an E-7-61 Olean (G), an E-9-22 Welz & Zerweck (G) and an E-9-122 Connecticut (EX). Mark figured I owed him something on a future trade and I probably do.

Friday night at Blue-Gray is pizza night. I don't know how the show hosts do it, but for \$14 registration, you get a table for the Saturday show, plenty of beer and soft drinks and pizza on Friday nights. In this day and age it is a great deal. I did buy an unusual K-Style bar mount opener that evening. It had no drink advertising but had 3 shelves for 3 different size cans and was made by Mar-Kay Industries of Chattanooga, Tenn. If anyone has heard of this before please let me know. I made one lap around the floors that evening but only bought a nice C-17-43 Del-Mar-Va.

Folks were already setting up at tables by seven the next morning. The show is open to the public, but heck this show already had the public staying at the motel. Not many new openers turned up, but Larry did buy a B-14 Coca-Cola from Bethlehem, PA that I walked by because it is the standard B14 Coca-Cola ad on the front and Bethlehem, PA is on the back. It pays to be careful. He got another good "E" from me for it. By 11:00 I was ready to head home. I followed Lou Sutton back to Richmond and had lunch at his favorite BBQ place with his wife Rita. By 3:00 I was back in Durham and cleaning up my latest haul. Thanks to Ken Ostrow and Larry Moter it was another great show.

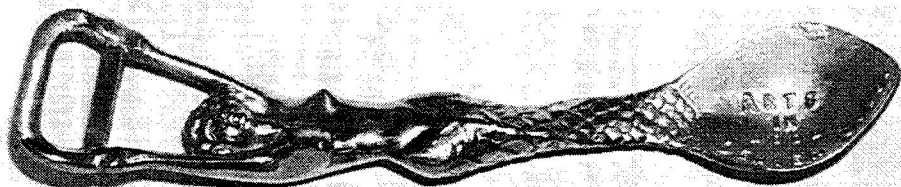
Checking Out An Opener Collection Near Myrtle Beach, SC

Since I started selling on the eBay Internet Auction, I have made a few contacts. One is a new corkscrew collector from Wilmington, NC, Christian Daniel. He bought one corkscrew from me and inquired if he could visit sometime. Well he came by the house in mid-March and I just happen to have some corkscrews to sell him. As part of the deal he said he would tell me about a man who had a bunch of openers to sell, a lot of which were like the ones I have displayed (As and Bs mainly). I agreed and he said he would contact the man and set up a visit. I wanted to go the first of April, but Christian went and lined it up for the next weekend.

The following Saturday I drove down to Wilmington to Christian's house. For someone who has only been collecting 6 months he has made great progress. He had about a 3 foot square coffee table filled up with nice corkscrews. After a quick look at his collection we were off to see the mystery opener collector. It took about hour to get there and we arrived at 11:00. His pride and joy was his cast iron figural collection. He was willing to sell anything and everything he had but the cast iron went as one collection. Too rich for me, but that was really just the start of what he had to offer. In his garage there were at least 10 large boxes full of miscellaneous openers. A lot of boat anchor material but a lot neat stuff. This collector had bought every opener and corkscrew if he didn't already have it. Advertising or no advertising it didn't matter.

Christian had picked the corkscrews pretty good and some of prices were a little high. I spent two hours looking and amassed a pile of 42 openers and corkscrews I wanted. The man wanted me to make an offer for the pile. I did some calculating and offered \$500. You could tell he was real happy and accepted the offer quickly. I then purchased 2 more corkscrews and a champagne tap at greatly reduced prices. It was about 1:00 by now and I was getting hungry. Hunger pains are the only thing that slows down my desire to find openers (opps – sorry Pat). We closed the dealing and left the former JFO member with boxes scattered everywhere but he was in a good mood. He said it was no problem for him to clean up.

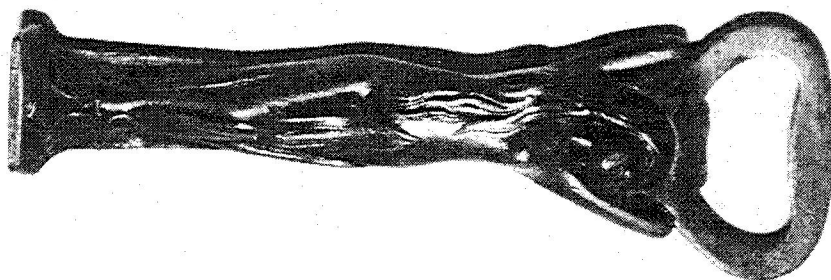
We took off and as I was driving Christian did a play by play of the pile I had bought. About 20 items were \$2-\$10 items. I was most happiest with a cast metal woman figural opener that has a corkscrew swinging out from here tail. She holds an opener over her head and is stamped "Miss America Chicago 1934". Later Don Bull told me it is only the second he has ever heard of and the other is in his collection. Not much in beer or soda openers (the two best beer ones were an F-6-34 Keeley and an O-4-36 Wiedemann) but just some neat openers. I was certainly a happy camper going back to Durham. Thank you Christian for the tip. You just never know what might turn up and it is basically in my own backyard.



**Above is one of the openers I got on the coast.
Actual length is 9 ½ inches, marked "Arts In Wood Denver Colo."
An unusual "Nude Woman" opener.**

Checking Out An Opener Collection Near Myrtle Beach, SC (Continued)

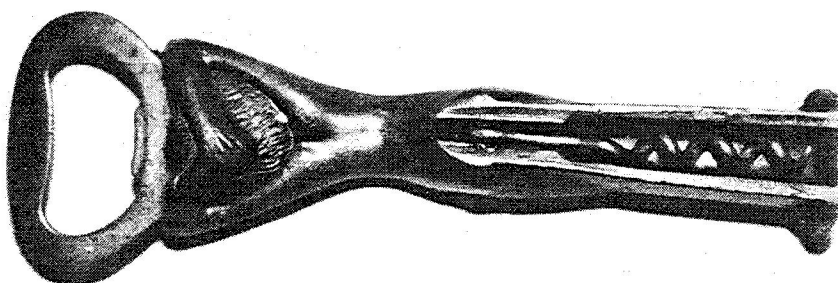
**1934 World's Fair
"Miss America"
Opener/Corkscrew**



(Front and Back View)

**My Favorite Find
On The Carolina Coast**

**Don Bull told me only the
Second one he has ever
Heard of (Value \$200-\$300)**

**Mid-Missouri Breweriana Show (Feb 13th and 14th) by Ollie Hibbeler**

Shirley and I drove 75 miles on Saturday morning the 14th and arrived a half hour early. I made a quick pass around the approximately 100 tables. I found hardly any openers to speak of. Just some new A-B plastic openers. Will they ever close making new openers! Whatever happened to the tab-top cans?

Then I spotted the reason for my poor showing. My fellow J.F.O. friends Art Santen and Vic Keown were standing around Don and Cora Whelan's table. None of them were looking for any openers, even though Don Whelan had more good openers for sale or trade than all the rest of the table sellers put together. They were talking about the J.F.O. convention in San Francisco. All are going including myself. With Southwest Airlines fares for \$200 round trip from St. Louis – how could anyone stay at home!

During the conversation I found out all the opener action occurred on Friday, the day before. Vic purchased two M-3s he didn't have, an M-3 Edelweiss (Black) and a 1934 World's Fair and numerous new plastic openers. Art purchased a porcelain stopper marked "H. Bohn Branford, CT."

I would have liked to have been there Friday evening when Art and Don traded each other 60 openers apiece. Now that is a TRADE! They had to have been working on this trade previously by mail. I wonder who got the best of the trade? Let's ask them in San Francisco.

Before we left about 1:00 P.M. I did purchase two unlisted new pewter openers with Budweiser and Michelob embossed, an L-12-Bud, 2 unlisted Q-36s, a Q-31-41 Bud, a Q-31-62 Bud, a I-13-127 Coors Special, and two foreign openers. Not much but the conversation was great. My next chance will be in San Francisco, but all three of these guys will be there too and again, one day ahead of me!

To the rest of my fellow J.F.O. members - Save some for Me! Ollie Hibbeler #149

"Opener Trivia"

In the last issue in my article on the eBay internet auction I mentioned a Beau-Brummel type corkscrew sold for \$905. Well one JFO member called saying he had found one at a local yard sale and was hoping it was worth \$900 but unfortunately he found a \$10-\$40 one. Don Bull was kind enough to write the following article and provide pictures and values.

Roundlets by Don Bull

There are several types of "Roundlets" or "Beau Brummel" type corkscrews. Most work by unthreading one end of the case from the other. The worm is concealed inside, slides out and swivels perpendicular to the case. The first piece is threaded back on to form the handle. Others have a worm loose in the case which fits in a slot in the case. A third variety opens to reveal a folding worm.

The most well known to the beer advertising collector are the Type L2/L6 mini bottles and Type M25 bullets. These are based on the 1897 patent of William Williamson and the 1900 patent of Ralph Jorres. The value of the bottles and bullets ranges from \$50 - \$150 depending upon the advertising message on the plates. A rarer version of the bottle with a stanhope in the top exist and has a value of \$250-\$300.

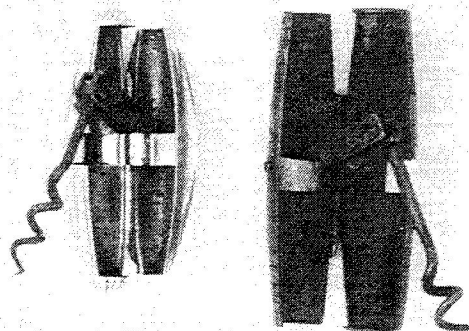
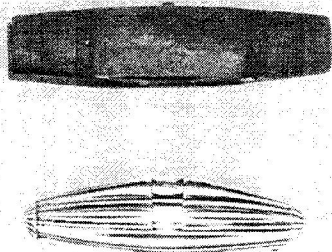
The other known beer advertising type Roundlet is the P-44 nickel-plated brass. The only advertising name noted on this type is Bartholomay Rochester. The value to a corkscrew collector would not be as significant as the \$150-\$250 value to a beer collector. This type of roundlet without advertising can be found at prices ranging from \$10 - \$40. With other types of advertising or marked examples fetch a bit higher range. Early celluloid, bakelite and wood versions are valued at \$75 - \$200. A wood roundlet with a stanhope was found at \$400. Modern plastic roundlets are \$2 - \$20.

Silver examples of the sliding worm type are valued at \$150 up to \$600. The higher end of the range are fine examples produced by such companies as Tiffany and Gorham. A few gold examples have also been found at the higher value range.

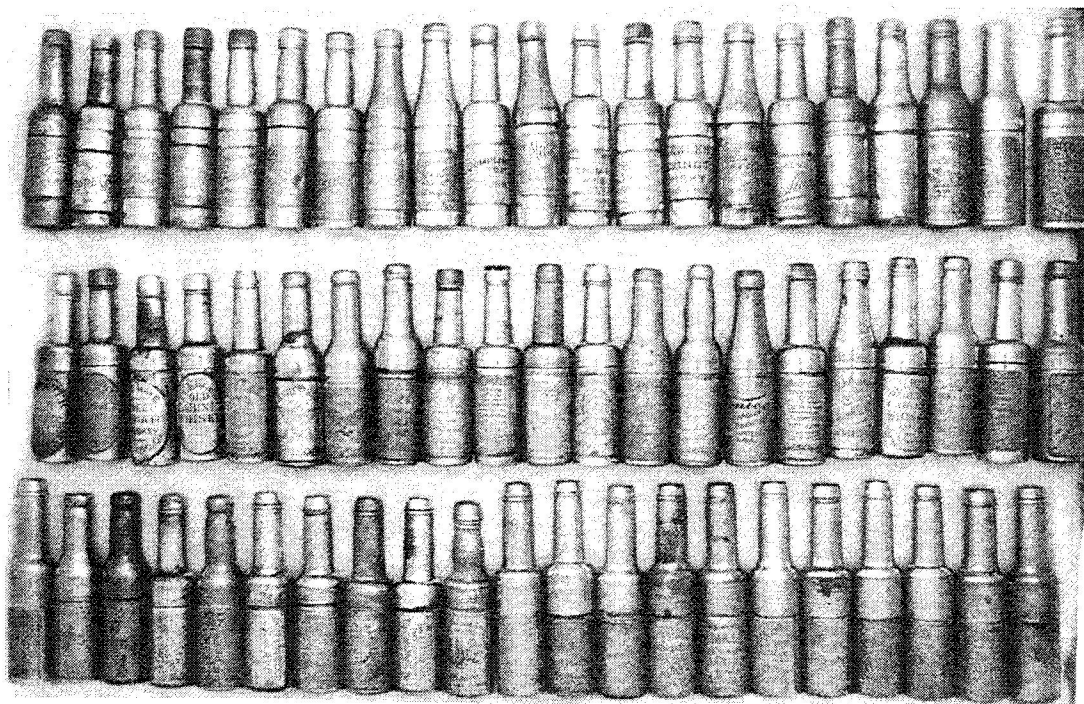
Sliding worm roundlets with a cap lifter on one end are valued at \$150-\$200. A rare example has a cocktail spoon on the opposite end (\$250). Another hard to find roundlet is a small figure of Christopher Columbus (\$500).

A tool case roundlet will contain a corkscrew and, perhaps, an awl, a screwdriver, a file or a tweezers. Plain examples are \$10 - \$30. Nicely machined versions are \$50 - \$100. These have also been found with lighters in the end (\$200) and ferrules on the end for attaching saws, hammers or screwdrivers (\$100-\$500).

The rarest "roundlet" is the hinged type with a folding worm. Two of these are shown in closed and open positions below. The brass (large piece) example recently sold on ebay internet auction for \$905.00. The silver roundlet (small piece) is rare and has a value of \$2500 - \$3500.



"Opener Trivia" (Continued)



The Don Bull Collection of L-2s (Beer and Non-Beer)

Don Bull's History and List of Bottle Corkscrews
--

On June 1, 1897 William A. Williamson was granted U.S. Patent #583,561 for his invention of a corkscrew which is concealed inside a small bottle or bullet shape. The ends thread together and when unscrewed, a helix pivots at an angle to the base. The two pieces are then screwed back together to form the handle. Advertising plaques were applied to the bottles.

On September 4, 1900 Ralph W. Jorres was granted U.S. Patent #657,421 for his version of this corkscrew. Jorres attached the helix to the top of the bottle instead of the base. Some of the Williamson bottles had stanhopies (magnifiers) in the top. When held up to the light a photo can be seen through the viewing hole. These are noted in the table below. Unfortunately, the photo was delicate and finding one complete is rare.

The table below contains known advertising plates with shapes and sizes shown. If the corkscrew is a bullet shape, an * appears in the Plate column before the V (vertical) or H (horizontal) plate designation. In the column marked C/S denotes whether the worm is in the top or the base. In the column labelled B*** indicates those in my own collection. Variations in patent data on the base bottom have not been considered in this list.

1962 Spinning Wheel Antiques Article on Corkscrews (2 Pages After Opener Trivia)
--

My mother bought this small antique magazine with a corkscrew article. The front page shows several corkscrews and then there was a one page article. I don't know if Frank MacDonald is still collecting but it certainly seems he had good pickings in 1962. Apparently 16th and 17th century corkscrews were easily obtainable at this time and I am sure the price was right. Of course 19th and 20th century were not very desirable then. The good old days of collecting.

Don Bull's List of L-2s

Brand	Advertising	C/S	Plate/ *=Bullet /Shape	Stanhope	B***
Abbott	G. W. Abbott & Co., Baltimore, Md., Manufacturers the Original Angostura Bitters	B	H 1 1/8"	NO	X
Anderson	Anderson Distillery Company, Louisville, Kentucky, Hand Made Sour Mash Fire Copper Whiskey	B	V 1 1/8"	YES-NO PIC	X
Anheuser Busch	Anheuser Busch Malt Nutrine	B	H 1 1/8"	NO	X
Anheuser Busch	Anheuser Busch (Spread Wing Eagle)	B	V 1 1/8"	NO	X
Anheuser Busch	Anheuser Busch (Closed Wing Eagle)	B	V 1 1/8"	NO	X
Barney	Compliments of Barney 1899	B	V 1 1/8"	NO	X
Bauer	Drink Bauer Kidney Gin, A. Bauer & Co., Chicago	B	V 7/8"	YES-NO MAG	X
Bohemian	Bohemian Brewing, Chicago	B	V 7/8"	YES-NO MAG	X
Brotherhood	Emerson's Old "5X" Rye, Brotherhood Wine Co., New York	B	V 1 1/8"	NO	X
Brown Forman	Old Forester Whisky, Brown Forman & Co., Louisville, Ky.	B	V 7/8"	YES-NO MAG	X
Brown Forman	Old Forester Whisky, Brown Forman & Co., Louisville, Ky.	B	*V 1 1/8"	NO	X
Buffalo	Buffalo Co-operative Brewing Co., Extra 6 Special Brew	B	V 7/8"	YES-NO PIC	X
Cape Brewery	Cape Brewery and Ice Co., Cape Girardeau, Mo.,	B	H 1 1/8"	NO	
Carta Blanca	Blanca, Cerveceria Cuauhtemol S. A. Exquisita Monterrey, N. L. Pilsener Mexicana	B	V 1 1/8"	NO	
Columbian	Columbian Souvenir (Pic of Christopher Columbus)	B	V 1 1/8"	NO	X
Cunninghams	Compliments of Cunninghams & Co., Ltd., Pittsburgh, Pa, Glass Bottle Mfrs	B	V 7/8"	NO	X
Dewar	John Dewar & Sons (Distillers) Ltd., Old Highland Whisky, Perth, N.B. & London	B	H 1 1/8"	NO	X
Dewar	John Dewar & Sons (Distillers) Ltd., Old Highland Whisky, Perth, N.B. & London	B	H 1 3/16"	NO	X
Dewar	Dewars Whisky, White Lable, Finest Highland Whiskey John Dewar & Sons Distillers Scotland	B	V 1 1/8"	NO	
Eastern	Eastern Liquor Co., Portland, Ore	T	V 1 1/8"	NO	X

Eldredge	Compliments Eldredge Brewing Co., Ale, Lager Beer, Brewers, Portsmouth, N.H.	B	H 1 1/8"	NO	X
Eliston	Eliston Brand Whiskey, Eliston Distilling Co., Cincinnati, Ohio	T	V 1 1/8"	NO	X
Frisch	Compliments of Frisch & Co., 346 East Water Street, Milwaukee Wis., Established 1869	T	V 1 1/8"	NO	X
Greil	B. S. Greil & Co., Wholesale Liquors, Montgomery, Ala.	B	V 1 1/8"	NO	X
Habich	Bottled by C. Habich & Co., Indianapolis, C. Maus Topaz	B	V 7/8"	YES-NO PIC	X
Harp	Harp Lager	?	?	?	
Hays	L. J. Hays, Sweet Briar Whiskey, Toledo, O.	B	V OVAL	NO	X
Hicks	Jacob E. Hicks, Wholesale Liquor Dealer, 507 Dickson St., Homestead, Pa.	T	V 1 1/8"	NO	
Home	For a pure beer drink Home Brewing Co's Imperial Pale Bottle Beer St. Louis	B	V 1 1/8"	NO	
Indiana	Indiana Brewing Co., New Albany, Ind., Export and Lager Table Beer	B	V 7/8"	YES-NO MAG	X
Indianapolis	Indianapolis Brewing Co., Indianapolis, Ind., U.S.A., Tonica	B	V 1 1/8"	NO	X
Joliet	Joliet Bottling Co., Joliet, Ills.	T	V 1 1/8"	NO	
Jones	Simeon Jones Ltd., St. John, N.B., XXX Ale & Porter	B	V 1 1/8"	NO	
Kelly	Call for D. Kelly's Private Stock, Finest Whiskey Sold, Columbus, O.	B	V 1 1/8"	NO	X
Kolb	Kolb Bros. Crystal Export Lager West Bay City, Mich.	B	V 7/8"	NO	
Lemp	Drink Lemp St. Louis	B	*V 1 1/8"	NO	X
Liquor	Liquor Trades Gazette	B	H 1 1/8"	NO	X
Live Oak	Live Oak Rye, The Live Oak Dist'l'y Co., Cincinnati, O. 1870	B	V 1 1/8"	NO	X
Mahan	Mahan Supply Co., Wichita, Kas., Budweiser, Schlitz	T	V 1 1/8"	NO	X
Martin	Argonaut Whiskey, E. Martin & Co., S. F.	T	V 1 1/8"	NO	X
Maryland Rye	Maryland Rye, Compliments Straus Gunshole, Richmond, Va. (Trade mark - pic of Gentleman)	B	V 1 1/8"	NO	
McAvoy	McAvoy Brewing Co., Chicago, U.S.A.	B	V OVAL	NO	
McCarthy	McCarthy's Oyster & Chop House, 505 Wood Street, Pittsburg, Pa.	T	V 1 1/8"	NO	X
Melchers	Melchers & Effler, Redistillers & Wholesale Dealers, Wines & Liquors, 509 Monroe St., Toledo, Ohio	B	V 1 1/8"	?	

Miller	Compliments of B. Miller, 501 N. 4th St., Harrison and 200 Grant Ave, Newark	T	V 1 1/8"	NO	X
Molter	H. T. & J. N. Molter, Providence, R.I., What Cheer Lager Beer	B	V OVAL	YES-NO MAG	X
Monahan	Monahan's XXXXX Whiskey, 108 210 Friend St., Boston, Mass.	B	V 1 1/8"	NO	
Moorman	J. H. Cutter Old Whiskies, C. P. Moorman & Co.	B	V OVAL	NO	X
Napa	Drink Jackson's Napa Soda	B	H 1 1/8"	NO	
None	Devil Caricature	B	V 1 1/8"	NO	
O'Keefe	Hazelwood Pure Rye, J. E. O'Keefe & Co., Distillers	T	V 1 1/8"	NO	X
Old "76"	The Old "76" Distilling Co., Medallion Whiskies	B	B 7/8"	NO	X
Old Crow	Old Crow Whiskey "1881" S. S. Pierce Co., Boston	B	*H 1 1/8"	NO	X
Old Hickory	Old Hickory Rye, Metropolitan Distributing Co., 108-8th Ave. N.Y.	T	V 1 1/8"	NO	
Peebles	Peebles Old Cabinet Whisky, Cincinnati, O., Trade Mark 1840	B	V 1 1/8"	NO	X
Peebles	Peebles Old Cabinet Whisky, Cincinnati, O., Trade Mark 1840	B	V OVAL	NO	X
Peebles	Peebles Cabinet Whisky, Cincinnati, O.	B	V 7/8"	NO	X
Pepper	Pepper Distillery, Hand made Sour Mash, Established 1780, Mas. E. Pepper & Co. Distillers, Lexington, Ky., Trade Mark, Jas. E. Pepper & Co.	B	H 1 1/8"	NO	X
Pepper	Pepper Distillery, Hand made Sour Mash, Established 1780, Mas. E. Pepper & Co. Distillers, Lexington, Ky., Trade Mark, Jas. E. Pepper & Co.	B	H 1 1/8"	Yes - Pic of Trademark	X
Person's	Call for Person's Sons Buffalo Club Whiskey. The Finest, Try It.	B	H 1 1/8"	NO	
Pfeffer	Jacob J. Pfeffer, Tippecanoe Double Fire Copper Whiskey	B	V 7/8"	NO	X
Pittsburg Bridge	Compliments of Pittsburg Bridge Co., Pittsburg, Pa. (engraved in bullet - no plate)	B	*	NO	X
Produce	Produce Exchange Cafe Rome & Miller 2 Broadway N.Y.	T	V 1 1/8"	NO	X
Riebel	Compliments of Jacob Riebel Cafe, 43 Water St., Elmira, N.Y.	T	V 1 1/8"	NO	
Ross	Charles H. Ross & Co., Thompson Pure Rye Whiskey, 339 Registered Trade Mark, Baltimore, MD.	B	V 1 1/8"	NO	
Rowley	Rowley's Cafe, The Palm, W. R. Rowley, Prop., Middletown, N.Y.	B	H 1 1/8"	NO	X

Rueckeisens	Rueckeisens Cafe, Nickel & Osthoff props, 144 Sixth St., Pittsburg, Pa.	T	*V 1 1/8"	NO	
Schoenhofen	P. Schoenhofen Brewing Co., Chicago, Edelweiss	B	V 7/8"	YES-NO MAG	X
Seifert	Compliments of John R. Seifert, San Diego, Cal.	B	V 1 1/8"	NO	X
Smith	C. D. Smith Drug Co., St. Joseph, Mo. Bulk Goods, King Korn and Windsor. Bottled goods. Thoroughbred and Bobby Burns Pts. & Qts.	B	H 1 1/8"	NO	X
Stagg	O. F. C. Whiskey, The Geo. T. Stagg Co., Frankfort, Ky.	B	V 7/8"	YES-NO MAG	X
Standard	The Standard Brewery's Chicago Bohemian Export	B	H 1 1/8"	NO	
Stroh	Compliments of B. Stroh Brewing Co., Detroit	B	H 1 1/8"	MP	X
Sunstein	Compliments of C. Sunstein	B	V 7/8"	YES-PHOTO *****	X
Terre Haute	Terre Haute Brewing Co., Terre Haute, Ind., Velvet	B	V 7/8"	YES-NO PIC	X
Texas	Texas Brewing Co., Brewers & Bottlers of Fine Beer, Fort Worth, Texas	B	V 7/8"	NO	X
Turner Looker	Compliments of The Turner Looker Co., Cincinnati	B	*V 1 1/8"	NO	X
White	Old Trimble Whiskey, White, Hentz & Co., Philadelphia	B	V 7/8"	NO	X
White Elephant	White Elephant Saloon, Keystone W VA	B	H 1 1/8"	NO	
Whitney	Whitney Glass Works, Philadelphia	B	H 1 1/8"	NO	
Wilkinson	Stylus Club Whiskey, W. C. Wilkinson, Philada.	B	H 1 1/8"	NO	X
Wilson	Wilson's Old Empire Rye aged in oak casks government guarantee 1890, Laurence A. Wilson & Co., Sole Proprietors, Montreal	B	H 1 1/8"	NO	X
Windisch-Muhlhauser	Ask for Lion Beers, Compliments of the Windisch-Muhlhauser Brewing Co., Cincinnati, O.	B	V 1 1/8"	NO	X
Wise	Armitage Rye Whiskey, David Wise & Co., Distillers, Chicago	B	V 7/8"	YES-NO PIC	X
Wolcott	Cornhill Rye, James E. Wolcott & Co., Rochester, N.Y., Established 1827, James E. Wolcott & Co.	B	V 1 1/8"	NO	
Wolcott	Cornhill Rye, James E. Wolcott & Co., Rochester, N.Y., Established 1827, James E. Wolcott & Co.	T	V 1 1/8"	NO	
Wolcott	Cornhill Rye, James E. Wolcott & Co., Trademarked Rochester, N.Y., James E. Wolcott & Co.	T	V 1 1/8"	NO	

"Opener Trivia" (Continued)

Lew Burritt wrote the following article on Dixie Beer openers. He adds that what started out back in '86 as an attempt to identify the Dixie Brewing Co. openers in my collection has now ended up as my compilation of "The Openers of Dixie". Along the way there was input from several local collectors of Dixie breweriana, correspondence with Ed Kaye and considerable help from Art Santen in weeding out those openers listed in the "Handbook" which in all likelihood do not exist.

THE OPENERS OF DIXIE

The bible of beer openers is the "Handbook of United States Beer Advertising Openers and Corkscrews" published in 1996 by Just For Openers, a club devoted to those handy gadgets that let us savor the contents of beer bottles and cans.

Here are the openers the "Handbook" attributes to the Dixie Brewing Co. of New Orleans. We have also added those openers that have appeared in JFO Newsletters since the 1996 "Handbook" was published.

First let's define the categories of the various Dixie openers. We'll use the "Handbook" designations for the purpose of clarity. B openers are key shaped openers. E are wire formed openers (like Coca Cola openers). G are cap lifters. I are combination cap lifters and can piercers (church keys). O are wall mount openers. N are novelty openers.

- | | | |
|-----|--------------|--|
| 01) | B-19-199 | COMPLIMENTS DIXIE BREWING CO. NEW ORLEANS, LA. |
| 02) | B-19-240 | DIXIE BREWING COMPANY -DIXO- BEVERAGE |
| 03) | E-6-133 | DIXIE BEER IT SPEAKS FOR ITSELF |
| 04) | E-11-16 | DIXIE BEER IT SPEAKS FOR ITSELF / SAME |
| 05) | E-14-348 | DIXIE BEER IT SPEAKS FOR ITSELF / SAME |
| 06) | E-14-487 | DIXIE BEER IT SPEAKS FOR ITSELF |
| 07) | G-14-18 | DIXIE BEER L.J. PEREZ. INC. ST. BERNARD AND PLAQUAMINE |
| | PARISHES | |
| 08) | G-28-26 | DIXIE BEER (BLACK ON SILVER) |
| 09) | I-11-38 | DIXIE BEER FOR A BRIGHT CHEERFUL TOMORROW / SAME |
| 10) | I-11-169 (*) | DIXIE BEER / SAME |
| 11) | I-11-335 | DIXIE 45 BEER / SAME |
| 12) | I-12-17 (*) | DIXIE 45 BEER / SAME |
| 13) | I-13-9 | DIXIE 45 (45 IN CIRCLE) BEER / SAME |
| 14) | I-17-155 | DIXIE (45 IN CIRCLE) BEER / SAME |
| 15) | I-22-21 (*) | DIXIE BEER |
| 16) | I-22-28 | "DIXIE 45 (45 IN CIRCLE) BEER" |
| 17) | N-2-1 | DRINK DIXIE BEER |
| 18) | N-2-2 (*) | DIXIE |
| 19) | N-88-1 | DRINK DIXIE BEER |
| 20) | O-5-3 | DIXIE 45 BEER |

Let's start with B-19-199. Dixo was a near beer produced by the Dixie Brewing Co. during prohibition. B-19-240 actually predates B-19-199. It is one of the few pre-prohibition Dixie advertising pieces that is in existence today. The diamond opening in both B-19 openers was used to turn on the gas headlights on timey automobiles (well before my time).

"Opener Trivia" (Continued)

The four E openers vary in length as well as in the shape of the base. The E-6 opener has a flat base. The E-11 openers is long (4 5/8 inches). E-14 openers run from 3 1/4 inches to 3 3/4 inches in length.

G-14-18 is the oldest of the two G openers, a metal opener with a plastic sleeve over the handle. Note the incorrect spelling Plaquemines. G-28-26 is the newest of the Dixie openers.

I-11-38 is a common opener. We discuss I-11-169 later. I-11-335 and I-12-17 are probably varieties of the same opener. We'll cover later. I-13-9 and I-17-155 vary in length, the I-13 being between 3 7/8 inches and 4 1/8 inches while the I-17 runs from 4 1/4 inches to 4 3/8 inches. There are minor variations of the two proceeding openers if you compare the manufacturer's data. I-22-21 will be covered later. I-22-28 is a long, wide "Esi-Ope" opener designed by Harland Ransom in the early fifties.

N-2-1 is the revered bowling pin opener with the key chain. It comes in red, blue and gold anodized aluminum. The DRINK DIXIE BEER is white. If you have a plain aluminum opener, it has probably lost its anodized color (see if DRINK DIXIE BEER is still white). There are rumors of a green anodized version, but "show me". N-88-1 is an elongated version of the N-2. Bartenders complained that the N-2 was too short for them, so Dixie met their wishes with a longer handle. The opener was packaged in a cardboard tube with metal end caps.

The O-5-3 is a Dixie wall mount opener.

If you noticed in the listing of the Dixie openers, four were shown with an *. In my opinion, supported by the opinions of several major opener collectors, these openers do not exist. Take I-11-169, I-22-21 and N-2-2. All three are indicated as saying DIXIE BEER. No way. Until the G-28-26 was issued in 1996, no Dixie opener said merely DIXIE BEER. No doubt early reporters of openers said, "I have one of these from Dixie Beer," and they were so listed. I consider I-11-35 and I-12-17 variations of the same opener. Both are indicated as saying DIXIE 45 (45 IN A CIRCLE) BEER. I have one manufactured by Vaughan and one by Handy. The Vaughan opener fits the dimensions of I-13's (3 1/4 to 3 3/8 inches). The Handy opener is 1/16th of an inch too long to fit the I-11 category but well short of dimensions for I-12 (3 5/8 to 3 3/4 inches). Again my opinion has support from a major collector who tells me he has never seen an I-12-17 and feels the I-12-17 does not exist as a separate opener.

This brings the actual number of Dixie Brewing Co. openers down to sixteen.

For uniformity, the "Handbook" should show I-11-335 as DIXIE 45 (45 IN CIRCLE) BEER.

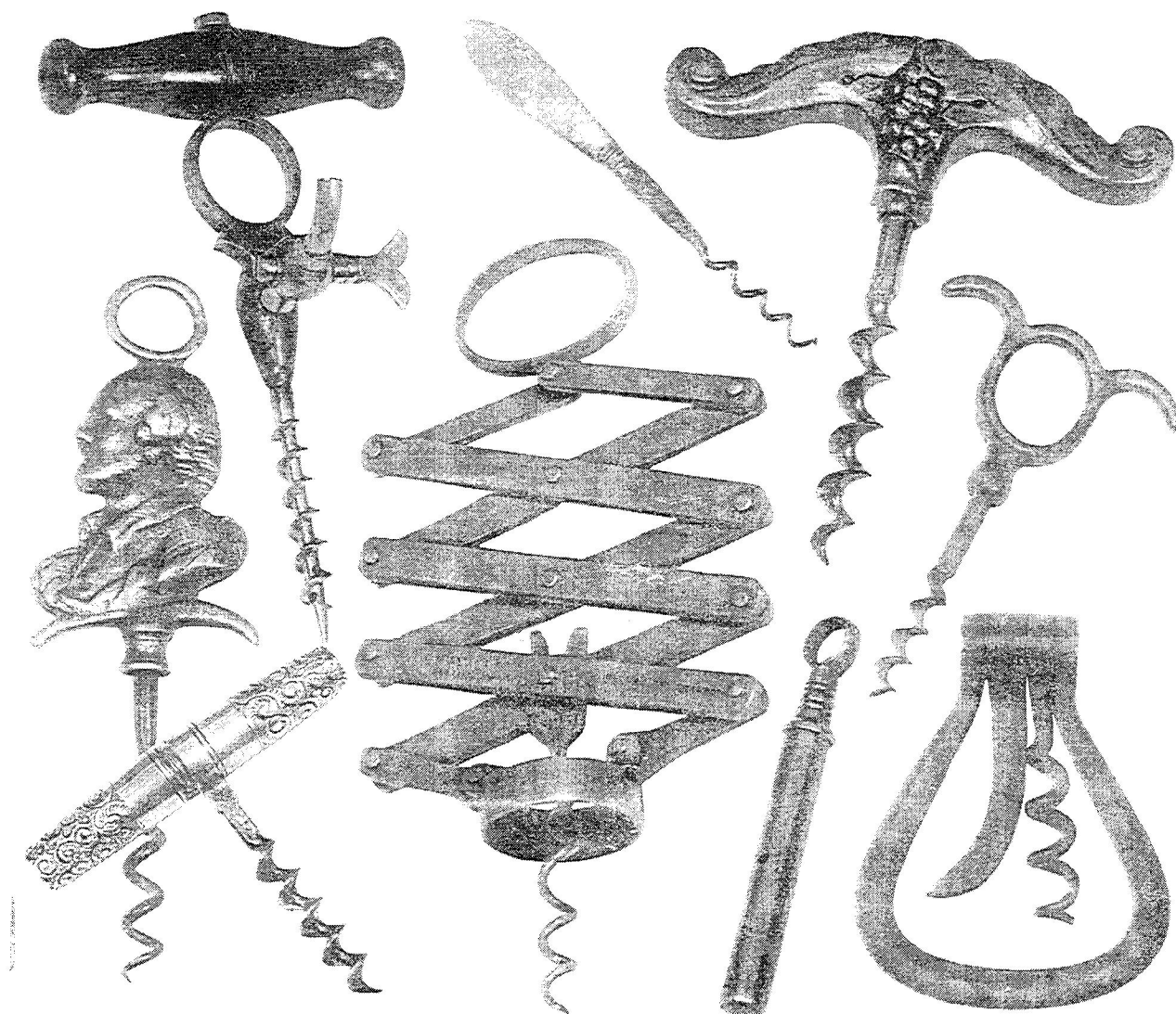
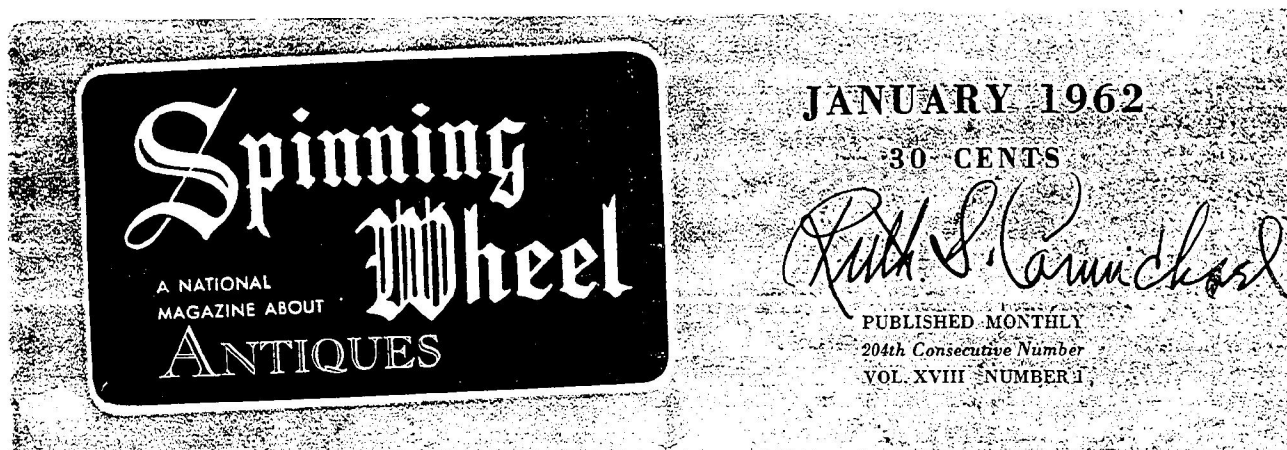
Incidentally, there are several other "Dixie Beer" openers listed in the "Handbook", but they are associated with the Lexington Brewing Co. There is also a "hatchet" opener which says DIXIE BEER CO. This opener has been labeled a fraud though it does make a nice collectable.

My collection is complete except for the B-19-199 DIXO opener and the E-6-133. If you have an extra of either, please think of me. I am willing to purchase.

Lew Burritt March, 1998

(Thanks Lew for a well written article)

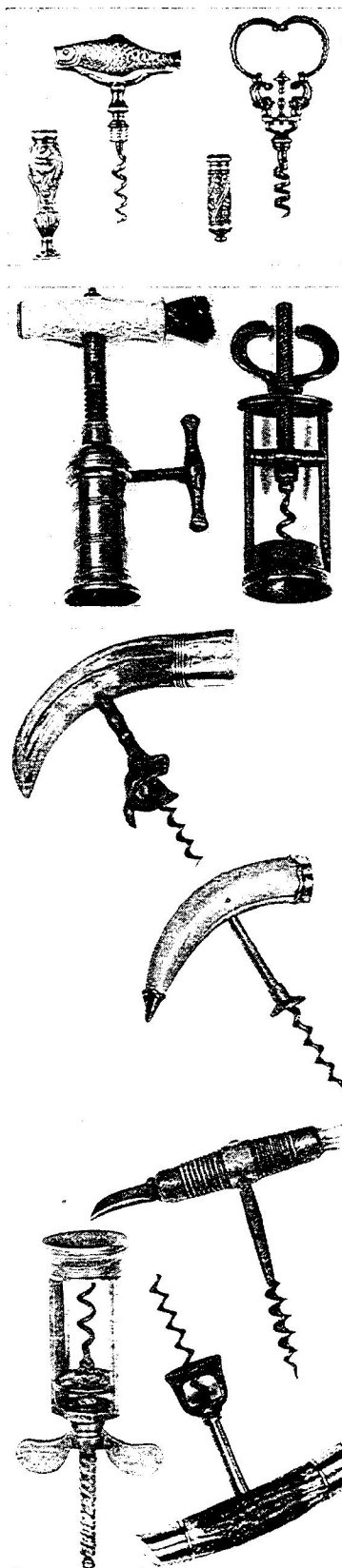
1962 Spinning Wheel Antiques Article on Corkscrews (Page 1)



- *Antiquity of the Corkscrew*
- *Lenox China from 1894*
- *Complete 1961 Index*
- *Late Auction Prices*

Antiquity of The Corkscrew

by FRANK H. MacDONALD



THE corkscrew seems to have originated some time in the sixteenth century soon after Spanish corks replaced tow or other material as stoppers in wine bottles. In the beginning the corked bottle was opened by digging the cork out piecemeal, pushing it into the bottle, pulling it out with the teeth, or by breaking the neck of the bottle. (Glass bottles then cost twelvepence each, the wine only fourpence.) Perhaps it was some early wine steward, appalled by either the exertion or the expense, who developed a crude but workable corkscrew by bending a piece of steel wire or a bodkin into a spiral or helix, twisting it into the cork, and attaching a piece of wood or other material to the opposite end in the form of a "T."

Those early bottles or jugs, when corked, were sealed with sealing wax. A black colored wax was first used, later wax of Spanish red. When a bottle was to be opened, the sealing wax had to be broken, the string which tied the cork to the neck-lip of the bottle cut, then the cork pulled out with the corkscrew. Convenient attachments began to appear on this implement. One of the earliest was a small brush inserted into one end of the "T" handle to brush away the remains of the sealing wax and broken cork from the mouth of the bottle. Later, when wire was substituted for string to bind the cork to the neck of the bottle, a small knife-like tool was fastened to the end of the corkscrew as a cord or wire cutter.

English records as early as 1545 show wines were being "binned," that is, the bottles were placed slopewise on the floors of wine cellars or in racks along the walls. The cork in contact with the wine swelled so that the fit with the bottle was very snug. It took a strong pull to dislodge the cork, and those concerned worked constantly to make a stronger, better corkscrew. With each generation through the centuries, mechanical improvements in corkscrews emerged. Some have been practical and are still in use; others were not, and were soon discarded. English makers of cooperage tools made an auger-type corkscrew called a "wimble"; the Spur

HIS innate curiosity about small mechanical tools led Frank H. MacDonald of Los Angeles, California, to the acquisition of an odd corkscrew, made like a folding hat rack, marked "Wiers Patent 1884." Today his collection of corkscrews number over 200. His earliest example is Dutch; it has a pewter handle and is presumed to date from 1740. Most, however, are Georgian or Victorian, with a few of later vintage. Among them are folding pocket corkscrews, ratchet, "King's Screw," ornamental, sideboard, and wire types. Handles may have brushes on the ends or wirecutters, or ornamental dogs, bears, Manx cats, keys, anchors, and the like. They are of brass, hard woods, ivory, mother-of-pearl, horn, tusks, and other substances. Mr. MacDonald intends to keep building his collection as a point of interest in that fast-approaching day when corkscrews become "tools of the past."

Makers Craft produced a corkscrew according to their own design. In the latter part of the seventeenth century in England, the design of the helix or spiral was increased to three inches and was known as a "worm."

Corkscrews in the Georgian period became elaborate, being made of fine steel with handles of sterling silver, mother-of-pearl, semi-precious stones, pewter, brass, and ivory. Handsome ones in small sizes appeared for milady's perfume bottles.

The Victorian period brought the mechanical types which have persisted to the present time. There appeared "screws within screws" similar to the Model T Ford jack; some worked on the ratchet principle. Hundreds were made in a wide variety of designs and patterns. In the latter part of the 1880s, wire corkscrews in all shapes and sizes were prevalent. The small wire corkscrew for medicine and perfume bottles came into wide use.

With the advent of the screw-top and other present-day closures, the knell of the corkscrew has been sounded. Even the corks in wine bottles, the last stronghold of the corkscrew, are being replaced by metal or plastic closures.

ILLUSTRATIONS: left to right from top to bottom: two early sheath type corkscrews, shown with sheaths, Dutch, 18th century, and Italian, 17th century. Wood handle, end brush, ratchet handle, rack type, ca. 1840. "Butterfly" handle, blue-steel, 1800-1825. Fancy handled Victorian sideboard corkscrews, silver trim, tusk and stag handles. Butterfly handle, in brass, 1800-1825; fancy silver and stag handled sideboard type, Victorian; wire, late Victorian. French augur type with wirecutter and brush.

COVER ILLUSTRATIONS: from lower left, reading clockwise: Fancy folding pocket type, 1860-1870; brass character handle, finger grip, late Victorian; champagne opener, hole in tip of screw, faucet to relieve pressure. 3-finger grip handle, Victorian; pearl-handled Georgian bouchoir type, ca. 1714-1830; Dutch, pewter handle, ca. 1740-1760; 3-finger grip type, Victorian; iron and steel folding type with wirecutter, ca. 1798-1840; brass sheath type, shown closed, ca. 1798. Center: "Folding gate", "Weirs Pat. 1884."

M-37 Bells Of Sarna Schlitz Opener in the Original Box

I recently bought this M-37 Schlitz off the eBay auction. It is in the original box and has the papers. The one tag dates the piece to 1949. The opener is mint and the box is also in great shape.

DIWALI

NEW YEAR BELL

In India, New Year festivities (Diwali) are celebrated the last four days of the year. Shops, houses and buildings are gaily decorated and the result is a rich blaze of color. Sweetmeat shops and vendors do a tremendous business during these festive celebrations and they build candy pyramids which are several feet high. On Diwali Eve people dress up for the occasion and visit their friends, leaving a package of candy at each house. The light of oil lamps flickers over the entire city, making the scene one of indescribable beauty. At midnight, they have the Diwali ceremonies where they worship Lakshmi, Goddess of Wealth and Beauty. Pundit (learned man) washes the floor with fresh soil, and when the floor is dry he writes in Sanskrit with flour on the floor. In the center of the floor he places a plate filled with silver coins. Friends, guests sit around the floor. They burn incense, read phrases from Mahabarta, sprinkle holy water from the Ganges, ring the bell to awaken the Goddess, put Saffron and flowers on coins, start new account books and make merry. Diwali ceremonies last from Diwali Eve to New Year's morning and ringing of bells to call on Goddess Lakshmi can be heard all night long. LAKSHMI DEVI KI JAI

One of the Collector
"Bells of Sarna"

S.S. Sarna
REG. U.S. PAT. OFF.

NEW YORK 10, N. Y.

© 1949



PATENT APPLIED FOR

"BELLS OF SARNA" BOTTLE OPENER

This clever, practical bottle opener is hand-made in far-off India. Everytime you uncap a bottle, the bell will merrily tinkle announcing refill time. The life of the party in more ways than one, and a decorative "note" to the bar.

S.S. Sarna
REG. U.S. PAT. OFF.

NEW YORK 10, N. Y.

Compliments of

JOS. SCHLITZ BREWING COMPANY

Milwaukee, Wisconsin

Bell of SARNA Made in India Especially For Schlitz

New E-Mail Addresses

Steve Armstrong	SUNSET@CLEARWATER.NET	(Correction)
Herb Danziger	HKDCFD@AOL.COM	(Correction)
Janet Goss	JGOSS@RCISYS.NET	
Paul Luchsinger	PPL@INFONLINE.NET	

The Just For Openers Membership Directory is at the end of this issue

Just For Openers now has 305 members (New Members: Numbers 857-873)

Many thanks to JFO members who help to bring in new members during 1997.

If any information is wrong please notify me.

The following table is a quarterly breakdown of when membership numbers were issued.

Jan 79 (1-85)	Oct 84 (386-387)	Apr 89 (518-525)	Apr 95 (706-720)
Apr 79 (86-143)	Jan 85 (388-396)	Apr 90 (526-548)	Jul 95 (721-734)
Jul 79 (144-165)	Apr 85 (397-405)	Jul 90 (549-560)	Oct 95 (735-749)
Oct 79 (166-178)	Jul 85 (406-410)	Oct 90 (561-565)	Jan 96 (750-763)
Jan 80 (179-185)	Oct 85 (411-414)	Jan 91 (566-567)	Apr 96 (764-778)
Apr 80 (186-191)	Jan 86 (415-444)	Apr 91 (568-574)	Jul 96 (779-795)
Jun 80 (192-194)	Apr 86 (445-454)	Jul 91 (575-583)	Oct 96 (796-808)
Jul 80 (195-200)	Jul 86 (455-456)	Apr 92 (584-602)	Jan 97 (809-814)
Jan 81 (201-228)	Oct 86 (457-460)	Jul 92 (603-618)	Apr 97 (815-825)
Jan 82 (229-296)	Jan 87 (461-473)	Apr 93 (619-633)	Jul 97 (826-832)
Apr 82 (297-314)	Apr 87 (474-477)	Jul 93 (634-640)	Oct 97 (833-837)
Jul 82 (315-326)	Jul 87 (478-484)	Oct 93 (641-647)	Jan 98 (838-856)
Oct 82 (327-329)	Oct 87 (485-488)	Jan 94 (648-658)	Apr 97 (857-873)
Jan 83 (330-342)	Jan 88 (489-496)	Apr 94 (659-669)	
Jan 84 (343-365)	Apr 88 (497-500)	Jul 94 (670-676)	
Apr 84 (366-376)	Jul 88 (501-510)	Oct 94 (677-688)	
Jul 84 (377-385)	Oct 88 (511-517)	Jan 95 (689-705)	

The following table shows the membership breakdown by state.

Alabama 1	Idaho 2	Minnesota 10	Oregon 2	Wisconsin 19
Arkansas 1	Illinois 20	Missouri 17	Pennsylvania 21	West Virginia 2
Arizona 9	Indiana 5	Montana 3	Rhode Island 1	
California 29	Kansas 6	North Carolina 7	South Carolina 1	
Canada 6	Kentucky 2	Nebraska 6	South Dakota 3	
Colorado 5	Louisiana 3	New Hampshire 1	Tennessee 4	
Connecticut 5	Massachusetts 9	New Jersey 7	Texas 11	
Delaware 1	Maryland 9	New Mexico 1	Virginia 5	
Florida 18	Maine 1	New York 19	Vermont 3	
Iowa 5	Michigan 11	Ohio 11	Washington 4	

Please note that 7 members choose not to be listed in the membership directory.

Spouse's Corner

by Pat Stanley, the Editor's Spouse

Well, dear friends, John is off to Ohio to a show. He took the two people who started his interest in collecting, his parents. While he is gone, I'm suppose to create my corner. I think I am too excited about San Francisco to concentrate on the next opener lesson!!!!

John is so dedicated, at this computer every night, working on this newsletter, updating ECBA membership information, and even on the soda pop handbook. Even with that wonderful model, I just can't get myself "opened" to the idea of writing. I do send Jackie Young email about every day, so that counts, right??? After all the Youngs certainly have some great openers. See, I write at work, boring stuff, and since the last newsletter, I have written way more than usual, which means I've had to think more than usual. I must be carrying around as much new information in my little head, as is contained in the entire opener handbook.

I have been visiting the home where Corkie will stay while we are in San Francisco, with another Yorkie. That counts, right???

One evening this week, I did talk to a club member for about an hour and a half. I did take down some information on a possible unlisted opener. That counts, right??? You see, John was asleep and since he had this trip coming up, one where he drives to Ohio one day and returns the next...which does worry me quite a bit... I told the caller, he would just have to talk to me. Apparently that was not a problem!! We talked about last year's convention, this year's convention, who is coming, who is not coming, etc., etc..... how much this club means, how great all the members are, how special the annual convention is..... Those who are attending their first convention will understand shortly.

You see, John has been staying up later than usual this past year, but he really requires a lot of sleep...So, if you call after 9, the night owl on duty may not wake him up. He does walk Corkie at 5 a.m. and I sure want to make sure he continues that routine.

Now, I don't want to make any big promises, but maybe what I should do, since I'm not really writing my Openers 101 column, is I should really try to look at some collections in San Francisco and find some of the openers I've written about. Ok, if I take some breaks from playing tourist, Jackie???

So everyone, look for me. If you are in the middle of a big trade, I'll come back later....unless it's a trade with Norm Jay, which is going to take all week anyways!!!

Exploring San Francisco is my second priority, the third is checking out some openers. And the first is meeting Don Johnson, from Nash Bridges....since I just know John Cartwright is a super host and will definitely honor my one request.

Perhaps I will see an opener in San Francisco that John removed from my decorative stamping case and sold or traded without even telling me. Perhaps I will see John some in San Francisco, since there is one rule....he does have to take time out to eat with me. I don't bring back food since the demise of one hamburger in Cincinnati. There were two hamburgers. One was for the person I talked to this week for one and a half hours. I saw him first, so guess who did not get a hamburger? Well, in the end they shared the remaining one.

AUCTION NEWS

Lynn Geyer's "Advertising Auctions". Main emphasis is on Breweriana (some openers). Cost is \$25.00. Advertising Auctions, 300 Trail Ridge, Silver City, NM, 88061 (505) 538-2341

Fink's Off The Wall Auctions. Main emphasis is on Breweriana (some openers). The cost is \$25.00. Finks Off The Wall Auctions, 108 E. 7th St., Lansdale, PA, 19446 (215) 855-9732

Nationwide Ad Auctions. Main emphasis is on Breweriana (some openers) and also separate Soda Auctions. The cost is \$13.00. PO Box 30244 Mesa, AZ 85275-0244 (602) 807-3609

OTHER CLUBS

American Breweriana Association (ABA) offers a magazine (American Breweriana Journal) 6 times a year on breweriana collecting and an annual convention. Dues are \$25.00 per year. Contact Chris Galloway, Executive Director, P.O. Box 11157, Pueblo, CO, 81001

Canadian Brewerianist offers 10 issues per year (The Canadian Brewerianist) on Canadian Breweriana collecting and an annual convention. Dues are \$23.00 per year (US Funds). Contact Loren Newman, 2978 Lakeview Trail, Bright's Grove, Ontario, CANADA, N0N 1C0

Canadian Corkscrew Collectors Club (CCCC) offers a quarterly newsletter (The Quarterly Worme) on corkscrew collecting and an annual convention. Dues are \$30.00 per year. Contact Milt Becker, P.O. Box 9863, Englewood, NJ, 07631

East Coast Breweriana Association (ECBA) offers a quarterly newsletter (The Keg) on breweriana collecting and an annual convention.

Dues are \$20.00 per year. Contact John Stanley, PO Box 64, Chapel Hill, NC 27514-0064, (919) 419-1546

MICROBES (Micro Chapter ECBA): offers a quarterly newsletter on Micro Breweriana.

Dues are \$7.00 per year. Contact Roger Levesque, PO Box 826, South Windsor, CT 06074

Figural Bottle Opener Club (FBOC) offers a quarterly newsletter on three-dimensional and either free standing or wall-mounted openers and an annual convention. A full color guide book is offered for \$28.00.

Dues are \$20.00 per year. Contact Charles Lesser, 1953 Sugar Stick Rd., Harrington, DE, 19952, (302) 284-4792

National Association Breweriana Advertising (NABA) offers a magazine (The Breweriana Collector) 4 times a year on breweriana collecting and an annual convention.

Dues are \$20.00 per year. Contact Robert Jaeger, 2343 Met-To-Wee Lane, Wauwatosa, WI, 53226

Newsletter Content and Deadlines for Sending in Articles and Receiving Newsletter
--

	January Issue	April Issue	July Issue	October Issue
Newsletter Content	New Additions to Handbook	Membership Directory	Convention Highlights	New Discoveries
Articles	December 1st	March 1st	June 1st	September 1st
Receiving	January 31st	April 30th	July 31st	October 31st

Just For Openers Auction Guidelines
--

Please Note: No Commission Is Charged For Any Openers Consigned

This auction is a service to members of JFO. Consignments can consist of up to 20 openers (of course if you have more than 20 nice openers and/or corkscrews for the auction, I would consider auctioning the whole lot). I would appreciate anyone wishing to submit openers for the auction, write me first. Include a list of openers you wish to auction along with a condition for each item. If you wish to auction an item with a value of over \$50.00 I would be willing to place a reasonable minimum bid on the item. Any openers submitted for the auction should have a minimum value of \$5.00. I presently have many less than \$5.00 openers available for the auction. Money received for your openers is sent to you within 3 to 4 weeks of the closing date.

Please Write First Before Sending Consignment Material.

WANTED (Please remember there is no charge for Ads)

Members to Swap Openers for Openers, Trade List for Trade List. People who are starting out like myself who want to build their collections from other members in different parts of the country.
Write or Call Scott Sherman, W5268 Quarry Rd Appleton, WI, 54915, (414) 954-1168

"A"s (Beer or Non-Beer), need # 10,11,14,16,17,18,19,22,30,33,37,41,42,43,44,46,47,51,54 & 56.
Susan Reynolds, 2117 21st Ave South, Birmingham, AL 35223 (205) 871-4348 after 5PM

A-1-9 Golden Glow, B-23-149 Golden Glow, E-9-111 Golden West & O-4-22 Golden Glow. Also any Breweriana from Rainier Brewing Co (Seattle WA,LA,SF), Golden West Brewing Co. of Oakland, CA & Port Townsend Brewing Co. of Port Townsend, WA. Buy or Trade. John Cartwright, 950 Marlene St Apt B, Ukiah, CA 95482

Please Help Me Upgrade My Collection. How? Will trade my poor condition A-9-15 Excelsior, A-9-32 Fried and A-9-33 Rainier for your good or better ones—and \$\$\$C-A-S-H\$\$\$.
Ed Kaye, 7077 Cedarhurst Dr, Fort Meyers, FL, 33919, Call Collect (941) 590-3068

Any: A-34 (Beer or Non-Beer), Beer: A-42, B-6, B-7, B-22, B-31,G-5. Soda Openers (Esp Coca-Cola & Pepsi-Cola). H-1s: 7,8,9,12,21,23,24,26,27,28,31,34,35,39,41,42,44. O-1: 1,2,3,5.
Write for latest trade list. John Stanley, PO Box 64, Chapel Hill, NC 27514-0064, (919) 419-1546

Need These Types: A-22-1 Ballantine, B-59-1 Providence, and C-1-7 Budweiser.
Great Trades Available. Jack Ford, 5351 Boyd Ave, Oakland, CA, 94618, (510) 655-5393

A-43-Dixie BeerM-49,M-60,M-64,M-89,M-111,M-112,N-15,N-45,N-81,N-83,N-86,N-90. Want to buy straight out.
Marc Benjamin,167 Nixon Beach Rd,Edenton NC 27932,(919) 482-2099

B-45, B-66, I-7, P-72, P-100, R-14 types with a Corkscrew (Beer/Non-Beer) and Silver Top Beer Openers. Herb Danziger, 550 Cherry Ct, Birmingham, MI, 48009-1459, (810) 646-9470

Beverwyck-B-18-499,B-21-147,C-10-48,E-9-87,F-6-87,I-2-2,I-14-1,J-5-5a, Dobler-I-11-232,I-18-6, Fitzgerald-C-20-12,I-12-23,I-18-9, Hedrick-E-9-55, Hinckel-P-30-1, Quandt-P-8-118,P-35-2, Stanton-A-20-13,C-12-103,C-18-24, Isengart-E-8-59, Stoll-B-18-380,E-8-107, Misc-A-28-40. Want to Buy.
Bill Laraway, 627 Kenwood Ave, Delmar,NY, 12054, (518) 439-2739

Bond and Lillard Openers (would like to buy). Have A-29, would like any others. Lillard is a family name.
George Love, 4301 Forest Plaza Dr, Hixson,TN, 37343, (423) 877-6006

C-2-6 Valley Forge, B-28 Howell & King, B-37 DuBois, and F-16 Wacker. Cash or Trade.
My A-11-1 Wooden Shoe (EX) for Harley-Davidson Bike and Goodyear Airplane Figurals.
Tony Zanghi, 2225 Deer Trail Rd., Coopersburg, PA, 18036, (610) 346-8232

"E"s! Have Trade List (various types) to send for "E"s that I need or will buy.
Larry Moter, 10149 Michaels Rd, Woodford, VA, 22580, (804) 448-3928

E-2-19 Yuengling Por-Tor (Will trade heavy for this opener or pay cash).
Harold Queen, 1001 Centre Ave, Jim Thorpe, PA, 18229, (717) 325-2612

"E" Type Openers Wanted. Will Trade my "C", "E" and "I" Types. Please send list of what you have and I'll send my list. Ralph Tewksbury, 84 Wildwood Dr, Parkersburg, WV 26101 (304) 863-3627

E-11 #18 Arrow #9 Lone Star, H-6 #1 Blatz #2 Carling #8 Falstaff #3 Olympia #7 Olympia #4 Pabst #9 Pabst #6 Schlitz, I-7 #82 Balboa #46 Berghoff #64 Edel Brau #79 Frederick #54 Manhattan #55 Old Dutch #37 Schaefer. Will buy or trade (from collection if necessary). Tom Gormally, 100 Nelson Pl, Westfield, NJ 07090, (908) 233-8867

H-8-5 Esslinger "Little Man Standing", H-8-19 Atlantic (Beer Garden Scene), L-1-5 Pabst and L-1-8 Manns. Have some traders. Harry Horn, 3113 Smoky Ct, Sacramento, CA, 95826, (916) 362-3590

DO THEY REALLY EXIST? I still want I-7-82,46,54,68,34,58,9,56 or other tough I-7 openers in VG or better condition. Will cut the chase and offer cash for your openers.
Tony Ricicki, 9 Laird Terrace, Somerset, NJ, 08873, (908) 873-0301

WANTED (Continued) (Please remember there is no charge for Ads)
--

I-7 Beer or Non-Beer Openers. I'm interested. Extensive trade list or cash.

Hale Milano, 506 Springhouse Road, Camp Hill, PA, 17011-1454, (717) 737-5067

"I"-Types: Will send 10 "I" types from Wisconsin breweries to anyone with openers from states other than Wisconsin & Illinois. Will trade for what you think is equal value.

Darwin Wilcox, 8495 Croix Tr, Roscoe, IL, 61073, (815) 623-2255

Interested in obtaining Breweriana of Stag Beer, brewed in Belleville, IL. Also interested in obtaining Beer Tap Handles (Markers) for collection I share with my grandson.

Jack Westall, 5945 Shallow Creek Dr, Milford, OH, 45150, (513) 248-1127

M-3s #40,23,24,25,41,26,39,33,36,34,42,37,6,43 Non-Beer M-3s #2,5,6,7,8,9,13,14,16,17,19,20,21,22,23,25

Vic Keown, 10547 Mert Ave, Saint Ann, MO, 63074, (314) 428-6343

O-5 Openers. Send for list. Buy or Trade. Top \$\$\$.

Steve Owen, 1175 Elkins Lake, Huntsville, TX 77340 (409) 295-3329

P-19-10 Kalispell, P-18-3 Washoe, P-31-6 Eureka, Purchase or Trade.

Have P-19-2 Townsend, M-73 Highlander Sliders (Red & Blue), and many other P's for trade.

Trade M-73 Highlander (Red & Blue) for M-73 Kessler or M-73 Lorelei (any colors).

Bill Pattie, 37050 SE 89th St., Snoqualmie, WA, 98065, (206) 888-2496

P-20-2 Valley Forge (have L-2-1 and L-2-2 Anheuser Busch for trade or sale).

Also M-3-27 Trommers, M-3-39 Hialeah, M-3-42 Seitz to complete collection.

Ben Hoffman, 213 Simmons Rd, Perkiomenville, PA, 18704, (610) 287-8243

Louisiana Brewery Openers: Old Union, 4-X, New Orleans, Dixie, Regal & Jax.

Ed Broders, 10220 Westwood, Baton Rouge, LA, 70809, (504) 293-2373, ebrowsers@franklin-press.com

Cigar Box Openers: SHM-2,8,10,11,13,14 DHM-13,14,15,16 RBO-3,9,12 HOR-2,3 RND-6,8,9,10 SQR-1,4 NL-6 BB-1,6,19 BUT-2,4 PKT-1,5,6,8,9,10 SEP-2,6,7,8,9 MIS-4,6,7,10,11. Will purchase or trade from 600+ collection.

(Types from the Cigar Box Opener Handbook copies available from Mike for \$3.00 which includes mailing)

Mike Schwimmer, 325 E. Blodgett Ave., Lake Bluff, IL, 60044-2112, (708) 295-1901

Cigar Box Openers-Will Buy or Trade for other C.B.O.s or Beer Openers.

Glen Enloe, 805 Teepee Dr, Independence, MO, 64056, (816) 796-9965

Connecticut Openers Wanted: Write for want and trade lists.

Paul Gauvin, 24 Strawberry Ln, Manchester, CT, 06040, (860) 646-9722

Corkscrews-Cork Pullers-Syroco (especially Golden Knight and Clown)-Early US Patents-Anything Unusual.

Pay competitive price in trade or cash. Have many corkscrews to trade. Please send description, sketch, photocopy, etc to Paul Luchsinger, 1126 Wishart Place, Hermitage, PA, 16148 (Tel/Fax 724-346-2631)

Corkscrews and Tin Can Openers: Have Beer Openers for Trade.

Joe Young, 36 S. Weston Ave., Elgin, IL, (847) 695-0108

Corkscrews, Beer Advertising Letter Openers, Beer Advertising Knives, and Postcards depicting

Corkscrews. Please send description, photo, sketch, photocopy, or tracing of what you have and advise price wanted. Don Bull, 20 Fairway Drive, Stamford, CT, 06903, (203) 968-1925

Corkscrews: Esp. Figural, Syroco, Thomason, Bakelite; also Wine Ephemera (Ads, Postcards, Labels, Grape Box Labels, Etc.); and Bakelite Anything. Buy Straight Out.

Abby Nash, 172 Bush Lane, Ithaca, NY, 14850, (607) 266-0690

Corkscrews: Esp. Walker's "Waiters & Hallboys" and any old Williamson wire shafted "T"s with any attachments to the wood handle (such as brushes and wire cutters).

John Vlossak, 1044 East Eldorado St., Appleton, WI, 54911, (414) 739-2789

WANTED (Continued) (Please remember there is no charge for Ads)

Dixie Beer Openers: B-19-199, E-6-133, I-11-169, I-12-17, I-22-21, N-2-2. Do they really exist? Wish to purchase. Lew Burritt, 125 Vogt Dr., Belle Chasse, LA, 70037, (504) 394-3567

From the Enterprise Brewing Co of Fall River, MA: A-20-47, B-18-26, B-21-430, C-12-135, E-13-35, E-14-526, E-14-779, I-11-13, J-1-1, and N-22-1. Dave Dubrul, 88 Linden Terrace, Burlington, VT, 05401, (802) 864-2089

"F" Type Beer Advertising Openers, Beer Advertising Letter Openers, Beer Advertising Match Safes and Beer Advertising Knives (with or without openers on them). Larry Biehl, 448 Crandon, Calumet City, IL, 60409

Idaho and Montana Beer Openers, especially from Kessler Brewing Co of Helena, MT and Sunset Brewing Co of Wallace, ID. Newer collector looking to expand current collection. Steve Armstrong, PO Box 1938, Orofino, ID, 83544, (208) 476-0128

Openers from Jamestown Brewing Co, Kuhn's Beer, Chautauqua Brew, Monessen, PA, Independent Brewing Co, Schaefer, & all Cleveland Beers. Ed Schaefer, 366 Bassett Rd., Bay Village, OH, 44140, (216) 871-0449

Lexington Brewery (Dixie Beer) & Coca-Cola Openers. Want to buy any figurals or unusual older examples of these. Also looking for old manufacturer's brochures or catalogs (originals or copies of). Thom Thompson, 123 Shaw Ave., Versailles, KY, 40383, (606) 873-8787

Louisiana Brewery Openers from the following breweries: Old Union, 4-X, New Orleans Brewing Co., Dixie, Regal & Jax. Ed Broders, 10220 Westwood Ave, Baton Rouge, LA, 70809, (504) 293-2373

"M-1 & M-2" Lithographed Openers (Excellent Condition Only) by beginning collector. Also Openers or Other Related Items to any Jung Breweries. Paul Jung, PO Box 425, Bechtelsville, PA, 19505, (610) 367-0239

New York Openers: E-4-345 Koch, E-4-331 Bartels, E-14-152 Horton, G-1-52 Pilsers, C-13-182 NBC. I have many great openers to trade. Mark Barren, 6141 Tachi Dr., Newfane, NY, 14108-9517, (716) 778-9724

P-1-2 Anheuser-Busch Corkscrew & \$45 for P-1-4 Toledo Brewing Co, P-73-3 FD Radeke Brew Co, P-89-1 Banner Brewing Co, or P-97-1 National Brewery Co. Ollie Hibbeler, 298 Highline Road, Lake Ozark, MO, 65049

WASHINGTON D.C. Openers and/or Corkscrews. Also figural corkscrews. Sandra Emme, PO Box 1454, Upper Marlboro, MD, 20773, (301) 627-8207

West Virginia Openers (B-7-12, B-18-110, and H-4-3), also **Southern US Beer openers and corkscrews.** Roger Jarrell, 1500 Sedwick Rd., Durham, NC, 27713, (919) 544-7787

Wooden Shoe (Minster, Ohio) and Sebald (Middletown, Ohio) Brewery Items. Jim Stork, 7504 Parliament Crt, West Chester, OH, 45069

SELLING (Please remember there is no charge for Ads)

"Openers (Beer and Otherwise), Corkscrews and Figurals For Sale". Send SASE (2 Stamps Business Size). Carl T. Jantos, 7025 Kevin Drive, Bethel Park, PA, 15102-3913

Figural Bottle Openers For Sale. Send SASE (Business Size) for List using FBOC Numbers. FBOC Book and new price guide \$25.00 postpaid. Sandra Emme, PO Box 1454, Upper Marlboro, MD, 20773, (301) 627-8207

Beer Openers For Sale. Send SASE for List. John Fisher, PO Box 153, Benedict, MD, 20612-0153

"American Breweries II": by Dale Van Wieren. Over 18,000 entries for nearly 8,000 brewing firms, tracing names, addresses, and dates of operation. (\$28 1st Class). John Stanley, PO Box 64, Chapel Hill, NC 27514

"JFO Back Issues" xeroxed for \$50.00 postpaid. Xerox copies of all JFO back issues 1979-97 (76 issues). John Stanley, PO Box 64, Chapel Hill, NC 27514-0064

1997 Convention Openers Contact: Mark Barren, 6141 Tachi Dr., Newfane, NY, 14108-9517, (716) 778-9724

Results of January 1998 JFO Auction Closing February 19, 1998

1	A-001-001	ARGONAUT	32.52
2	A-001-008	GLOBE	12.00
3	A-001-021	EL CAPITAN	12.71
4	A-001-028	YOSEMITE BEER	23.00
5	A-001-037	GOLDEN RIBBON	25.00
6	A-001-047	SANTA CRUZ	32.00
7	A-001-052	JAMAICA PALE	26.26
8	A-001-086	SPOKANE BOTTLE	16.75
9	A-001-999	PISCO PUNCH	19.19
10	A-001-LOT	(2 BLANK OPENERS)	0.10
11	A-003-004	KASKO MALT	10.00
12	A-003-007	JIFFY BRUMALT	21.10
13	A-004-003	CASCADE	8.20
14	A-004-044	AUGUSTINER	15.00
15	A-005-001	GOLDEN RIBBON	33.13
16	A-005-009	COLUMBIA PRODUCTS	15.00
17	A-005-999	CURO SODA OMAHA	12.50
18	A-005-UL	MASTERBRU	19.75
19	A-005-UL	TIP-TOP MALT	18.75
20	A-006-001	WEST END	10.50
21	A-007-003	FRONTENAC EXPORT	12.71
22	A-007-004	FRONTENAC OLDE	21.75
23	A-007-999	RAINBOW	10.50
24	A-008-001	RUPPERT	25.89
25	A-012-001	BURGERMEISTER	23.50
26	A-012-006	WHITE LABEL	18.65
27	A-012-999	SHASTA WATER	21.00
28	A-013-999	RITTMANN BOTTLER (MIN \$20)	37.70
29	A-013-999	BELL AUTO SUPPLIES	15.50
30	A-015-004	COOK	18.66
31	A-017-999	GESCO PALE DRY	19.19
32	A-017-999	VAUGHAN UNIQUE	8.20
33	A-018-999	RITTMANN BOTTLER	17.95
34	A-018-999	STEELE & ABBOTT PAINT	8.20
35	A-020-999	YANICK FURN	10.00
36	A-021-010	ZIEGLER	26.76
37	A-021-999	7 UP	15.15
38	A-021-999	PISONI QUALITY BEERS	12.50
39	A-024-999	NU-GRAPE	15.15
40	A-028-002	CONSUMERS PRODUCTS	20.25
41	A-028-003	DEPPEN	31.75
42	A-028-019	RYAN CONSUMER	18.75
43	A-028-999	REC-OLA	10.11
44	A-029-003	K-B	18.75
45	A-029-007	RAINIER	21.25

46	A-029-015	SCHNEIDER	22.60
47	A-029-032	BUTTE BOTTLER	25.25
48	A-029-062	RAINIER (Really #7)	0.00
49	A-029-999	TRY-ME	8.00
50	A-029-999	RED ROCK COLA	10.50
51	A-032-001	WOODEN SHOE	35.75
52	A-043-006	BRITANNIA	16.00
53	A-044-001	CREAM CITY	26.50
54	A-999-999	CONCORD GRAPE SODA	8.20
55	B-001-014	JENNER	30.11
56	B-002-001	BLATZ (BRASS)	36.50
57	B-002-030	HANLEY (FULL PAINT)	35.75
58	B-003-001	DOELGER (BRASS)	15.00
59	B-006-999	LITTLE CHANCELLOR CIGAR (Tie)	15.00
60	B-007-020	CRESSON SPRINGS	40.11
61	B-013-092	BLUE RIBBON PRODUCTS	15.11
62	B-013-999	FOX SEATTLE WASH	15.15
63	B-014-087	GLUEK	8.50
64	B-014-118	SAND SPRINGS	5.77
65	B-014-119	ZOLLER	7.73
66	B-014-139	GOLDEN GLOW	21.75
67	B-014-999	DENNY WAY BEVERAGE	2.00
68	B-014-999	DREWRY GINGER ALE	8.53
69	B-014-999	TALLY	5.53
70	B-018-051	OLD MONARCH	20.30
71	B-018-146	SCHILLER BROS	6.00
72	B-018-289	BLATZ	9.10
73	B-018-346	HART MALT	19.75
74	B-018-381	WEINHARD	18.75
75	B-018-999	COCA-COLA OKLAHOMA CITY	1.00
76	B-018-UL	OLYMPIA	20.75
77	B-019-054	MAIER	12.53
78	B-019-166	HAMMS	12.53
79	B-019-202	ACME	7.71
80	B-019-228	BARTELS	19.75
81	B-019-999	CELERY-COLA	4.53
82	B-019-999	LEMON KOLA	9.53
83	B-021-011	DIEHL	11.53
84	B-021-072	RUHSTALLER	7.00
85	B-021-072	RUHSTALLER	12.00
86	B-021-076	SCHLITZ	6.53
87	B-021-142	AMERICAN	12.53
88	B-021-346	HART MALT	19.75
89	B-021-UL	LEMP	30.00
90	B-022-019	SCHLITZ	22.50
91	B-022-057	DU BOIS	18.75
92	B-022-107	GLUEK	11.11
93	B-022-122	OVERLAND BEVERAGE	19.75
94	B-023-018	MILLER	5.73
95	B-023-024	OVERLAND	16.99

		BEVERAGE	
96	B-023-042	MINNEHAHA	4.53
97	B-023-086	EDELWEISS PRODUCTS	28.78
98	B-023-111	LANG	19.75
99	B-023-112	LOVEJOY MALT	18.75
100	B-023-164	BUTTE BOTTLERS	18.75
101	B-023-999	CRYSTAL SPRINGS	7.50
102	B-023-999	DR BROWN CELERY	3.00
103	B-023-999	PICHER BOTTLING	1.00
104	B-024-001	ACME	9.00
105	B-024-005	BURGERMEISTER	12.00
106	B-024-006	BURKHARDT	12.00
107	B-024-020	IRON CITY	12.10
108	B-024-033	SCHMIDT	5.00
109	B-024-056	SALEM	12.00
110	B-024-075	BECKER	30.00
111	B-024-999	ROCK SPRING GINGER ALE	8.11
112	B-032-999	CHIEF MANITOU	33.33
113	B-033-001	SCHOENHOFEN	22.66
114	B-035-012	EAST SIDE MALT	19.75
115	B-035-017	QUINALT CLUB	20.00
116	C-001-003	SCHOENHOFEN	35.50
117	C-004-001	PABST	9.71
118	C-005-001	PABLO	6.95
119	C-006-003	IROQUOIS	6.95
120	C-009-002	BEVERWYCK	12.00
121	C-010-012	KOERBER	3.57
122	C-010-015	NEWARK	7.00
123	C-010-016	PHOENIX	5.03
124	C-011-003	BIG-BEN BEVERAGE	10.00
125	C-012-004	CREMO	4.00
126	C-012-043	FELSENBRU	7.16
127	C-012-074	CRYSTAL ROCK	4.50
128	C-012-147	ST MARYS	5.50
129	C-012-163	FRANKLIN	11.50
130	C-013-011	CAMDEN (BOTTLE)	15.00
131	C-013-055	GUNTHER (BOTTLE)	7.16
132	C-013-109	STANTON	2.50
133	C-013-202	BUCKEYE	4.00
134	C-014-006	JONES (VAR (B)	12.30
135	C-015-006	IROQUOIS	6.00
136	C-016-011	SCHOENLING	6.00
137	C-017-006	GRETZ	16.78
138	C-018-011	TROMMER	7.86
139	C-019-003	GRETZ	4.73
140	C-019-999	HIRES	6.11
141	C-021-004	PETER	15.00
142	C-028-001	MOUND CITY MALT	9.75
143	C-035-999	FORT GARRY	15.00
144	C-036-002	MOUND CITY MALT	12.71
145	C-041-999	TORONTO HILTON	0.26

20th Year, Issue #78

146	C-999-LOT	SODA C-11 JAKES PURITY BRAND BEVERAGES C- 12 DRINK NESBITTS C-12 DRINK SQUIRT C-12 SPUR COLA C-13 TUMBLE BROOK GINGER ALE C- 13 SCHWEPPES C-13 HYDROX BEVERAGE C-13 DRINK GOLDEN EAGLE BEVERAGES	26.75
147	CIG-RBO4	GENERAL CIGAR	25.00
148	D-001-001	BUDWEISER (VAR B)	2.03
149	D-002-006	SCHLITZ	4.09
150	D-004-006	LEISY (VAR A)	6.10
151	D-006-999	MOXIE	7.10
152	D-008-999	TRI-MOUNT CIGAR	40.00
153	D-011-001	HAGERSTOWN	110.00
154	D-012-005	S B & M	18.00
155	D-012-007	MASS	6.53
156	D-999-999	DIXIE	5.15
157	E-001-013	TIVOLI-UNION	10.76
158	E-002-010	SCHEIDT	10.76
159	E-003-005	FISHER	5.50
160	E-003-017	SIOUX CITY	7.33
161	E-004-025	COORS (VAR B)	10.75
162	E-004-029	DIEHL (QUOTES)	10.75
163	E-004-035	FALSTAFF	8.75
164	E-004-040	GOLDEN WEST	10.75
165	E-004-048	HUMBOLDT	8.75
166	E-004-051	KOEHLER	10.78
167	E-004-062	MILLER (VAR A)	14.75
168	E-004-072	REGAL AMBER	8.75
169	E-004-072	REGAL AMBER- LAGER	6.00
170	E-004-105	CALIFORNIA	8.75
171	E-004-105	CALIFORNIA	3.00
172	E-004-117	GOETZ	5.75
173	E-004-126	LUCKY	10.75
174	E-004-167	FISHER	10.75
175	E-004-295	BERGHOFF	10.78
176	E-004-337	SCHLITZ	9.75
177	E-005-061	STORZ	15.00
178	E-006-141	MATZ	15.00
179	E-008-012	ANHEUSER- BUSCH	6.11
180	E-008-999	EDDY & CO BRATTLEBORO VT	0.76
181	E-011-010	OLD DUTCH	16.78
182	E-014-018	BECKER	3.03
183	E-014-019	BECKER	3.03
184	E-014-039	BUTTE	5.78
185	E-014-040	BUTTE	7.73
186	E-014-043	CASPER	8.99
187	E-014-052	COORS	3.00
188	E-014-124	GREAT FALLS	4.00
189	E-014-124	GREAT FALLS	3.02
190	E-014-140	HARVARD	14.92
191	E-014-147	HIGHLANDER	3.50
192	E-014-163	KESSLER	3.03

JUST FOR OPENERS

193	E-014-284	TIVOLI	5.50
194	E-014-314	ARIZONA	11.76
195	E-014-318	BECKER	6.96
196	E-014-322	BLATZ	6.02
197	E-014-359	FISHER	3.02
198	E-014-375	GREAT FALLS	8.83
199	E-014-441	SHERIDAN	8.96
200	E-014-470	BLATZ	6.02
201	E-014-562	TIVOLI-UNION	7.73
202	E-014-580	AMERICAN	12.93
203	E-014-582	ANACONDA	7.73
204	E-014-793	HIGHLANDER	6.78
205	F-002-008	RAINIER	11.00
206	F-002-012	CRYSTAL ROCK	10.57
207	F-002-LOT	(1) WELCH'S GRAPE JUICE (2) CASCADIAN- WENATCHEE	5.72
208	F-004-LOT	(1) GOLD SEAL SODA (2) GLACIER TRAIL PRODUCTS HAVRE MONTANA (3) LANE BOTTLING GOLD SEAL GINGER ALE (4) AREN PALE DRY GINGER ALE (5) ELKHORN GINGER ALE BAKER OREGON (6) IDANHA MINERAL WATER SODA SPRINGS IDAHO	40.66
209	F-004-LOT	(1) SQUIRT BELLINGHAM BEVERAGE CO. (2) SEVEN-UP BOTTLING CO SPRINGFIELD ILLINOIS (3) HOOD RIVER OREGON BOTTLING WORKS (4) ARLINGTON CLUB GINGER ALE	30.66
210	F-006-LOT	(1) JACK SPRAT (2) ORANGE SMILE SIRUP CO (3) DRINK SMILE (4) CHERRY BLOSSOMS	23.66
211	F-007-001	COLUMBIA	8.57
212	F-023-999	KEEFE BROS	18.95
213	F-999-999	MALTED GRAPE NUTS	10.71
214	G-002-001	BOSTON	10.75
215	G-003-003	HAMM	9.25
216	G-009-019	SCHREIBER (BLACK ON NATURAL)	16.85
217	G-009-038	SCHREIBER (BLACK ON NATURAL)	15.75
218	G-028-004	YUENGLING (RED ON SILVER)	4.00
219	G-999-LOT	(1) G-1 BLACK	15.03

April 1998

		HORSE ALE (2) G-4 TUP (3) G-5 CHERO-COLA (4) DRINK NEHI (5) G-21 CANADA DRY GINGER ALE	
220	H-002-004	BERGHOFF	4.00
221	H-002-LOT	(8 PIECES) (1) BLUE ANCHOR BEVERAGES (2) SUN CREST (3) CREADON'S GINGER ALE (4) CANADA DRY (5) HUGRAPE SODA (6) M&S ORANGE (7) ORANSODA (8) NUGRAPE (BOTTLE)	38.50
222	H-003-999	CLIQUEOT CLUB	11.30
223	H-005-999	CLOVERDALE	3.53
224	H-006-010	BLATZ	5.75
225	H-006-015	OLYMPIA IMPORTS	7.95
226	H-007-010	GRAF	9.00
227	H-011-002	BLATZ	6.00
228	I-004-LOT	#21 PABST #43 REGAL PALE #61 BURGERMEISTE R	8.53
229	I-007-010	COORS	11.53
230	I-007-011	CROFT	11.53
231	I-007-072	TROMMER	10.77
232	I-008-001	FOX	12.77
233	I-010-002	RED TOP	18.78
234	I-020-LOT	#16 COORS(VG) #6 HAMMS(G) #17 HAMMS(G) #22 HAMMS(VG)	12.00
235	J-006-LOT	#1 ACME #35 BURGERMEISTE R	4.50
236	K-008-001	SCHLITZ	28.57
237	L-001-999	DOUBLE DIAMOND (FOREIGN)	15.00
238	L-002-001	ANHEUSER BUSCH	36.00
239	M-001-003	HAFFENREFFER	27.00
240	M-001-005	HARVARD	30.73
241	M-001-009	OLD COLONY	35.75
242	M-001-013	LIEBMANN / CONQUEROR	77.17
243	M-001-014	LIEBMANN / RHEINGOLD	35.00
244	M-003-002	BISMARCK (BLACK)	23.53
245	M-003-017	SCHORR- KOLKSCHNEIDE R (BLUE)	25.89
246	M-003-021	CROFT (BLACK/OTT)	31.57
247	M-003-999	1933 CHICAGO (BLUE)	15.00
248	M-003-999	A.A.O.N.M.S. (ORANGE)	55.30
249	M-006-999	BEER EQUIPMENT	12.00
250	M-019-022	SCHLITZ	4.00
251	M-019-999	7 UP (CHROME)	4.00

20th Year, Issue #78

252	M-019-999	7 UP (BRASS)	4.00
253	M-024-001	COORS	3.50
254	M-029-999	7 UP	7.50
255	M-035-001	STORZ (MIB)	4.50
256	M-054-001	STROH	3.50
257	M-068-001	PFAFF	60.60
258	N-002-001	DIXIE	6.50
259	N-006-001	LEMBECK & BETZ	30.53
260	N-009-010	ESSLINGER	6.53
261	N-009-LOT	(12 PIECES) (1) NEW YORKER GINGER ALE (2) TOP HAT CITRUS SODA (3) 4% SCHEAS (4) MERCER BEVERAGES (5) HOOD RIVER BOTTLING WORKS (6) CRYSTAL BEVERAGES (7) SILVER STATE BEVERAGES (8) ARROWHEAD GINGER ALE (9) NELSON CLUB GINGER ALE (10) WAUKESHA WATERS (11)	29.95

JUST FOR OPENERS

		BLUE ROCK BEVERAGES FAIRVIEW, MONTANA (12) BIRCH BEER	
262	N-010-999	MOUNTAIN VALLEY	0.52
263	N-025-UL	SCHAEFER	36.77
264	N-026-001	RICHBRAU	15.11
265	N-047-999	MOLSON	15.50
266	N-079-999	PEPSI-COLA	17.88
267	O-003-001	VALLEY FORGE (MIB)	15.71
268	O-004-003	GIBBONS	24.52
269	O-004-008	SCHAEFER (MIB)	30.00
270	O-004-014	SCHAEFER	24.77
271	O-005-003	DIXIE 45	24.52
272	O-005-005	GRAND PRIZE	12.10
273	O-005-010	SOUTHERN SELECT	26.00
274	O-005-014	SIMON PURE	24.52
275	O-009-001	STEGMAIER	24.52
276	O-009-999	COCA-COLA (FRENCH)	24.52
277	P-019-999	C & J GINGER	6.25
278	P-019-999	BARTLETT WATER	1.00
279	P-051-012	FEHR TONIC	25.00
280	P-090-999	OLD BARTON	10.71
281	P-999-999	ZIG ZAG	30.71

April 1998

282	Q-003-001	OLYMPIA	15.77
283	Q-005-UL	PACE	5.00
284	Q-006-002	HUDY DELIGHT	5.00
285	Q-007-002	OLD MILWAUKEE	3.00
286	Q-008-031	LONE STAR	12.50
287	Q-010-004	SCHMIDT	2.71
288	Q-010-006	COORS	3.00
289	Q-012-003	BUDWEISER	2.71
290	Q-015-002	BUSCH	2.71
291	Q-018-004	OLD STYLE	3.00
292	R-001-001	IROQUOIS	10.00
293	R-001-002	INTERNATIONAL	12.65
294	R-003-001	IROQUOIS	20.00
295	R-003-004	IROQUOIS	28.66
296	R-003-005	IROQUOIS	10.00
297	S-001-001	BURGER	7.57
298	Z-999-LOT	C-15-4 HARVARD C-17-8 HANLEY E-14-43 CASPER E-14-131 HABERLE G-4-2 BLATZ J-4-19 TIVOLI	16.00

Collecting
Coca-Cola Memorabilia
including

Trays • Signs
Calendars • Posters
Blotters • Coupons
Pocket Knives
Watch Fobs • Openers
Letterheads

Other Smalls And
Rare Or Unusual Pieces

Particularly Interested
In Coca-Cola
Chewing Gum Items

Collector of items
pertaining to or advertising

Coca-Cola

Thom Thompson
123 Shaw Avenue
Versailles, Kentucky 40383
606-873-8787
606-255-2727

THOM THOMPSON



Total Realized \$4,377.24
High Lot # 153 for \$110.00



April 1998 JFO Auction-Closing May 19, 1998- Name & Mem #:
--

Send Bids To: John Stanley, PO Box 64, Chapel Hill, NC 27514

Auction Rules (Note: No Phone Bidding)

- 1) Only 1 Bid Per Item and Only 1 Bid Sheet Allowed for the Auction
- 2) Openers Sold to Highest Bidder
- 3) Identical Bids, Earliest Postmarked Bid Wins
- 4) 7 Days to Return Openers If Not Satisfied
- 5) Openers Shipped Upon Payment (Please Pay within 7 days of Receiving Invoice)
- 6) Results Shown Next JFO Issue (Winning Bidders Receive Copy with Invoice)
- 7) Shipping and Handling Extra

Conditions (CS): PO (Poor), G (Good), VG (Very Good), EX (Excellent), M (Mint)
 (UL-Unlisted in 98 Handbook, 999-Non-USA-Beer)

JFO # & Description from 1998 Handbook Of United States Beer Advertising Openers and Corkscrews

#	JFO #	Description	ST	CS	BID
001	A-001-001	ARGONAUT BEER SAN FRANCISCO	CA	G	
002	A-001-008	GLOBE BREWING CO. SAN FRANCISCO PHONE SU-0120	CA	VG	
003	A-001-016	MONTANA BREWING CO. "MY FAVORITE"	MT	G	
004	A-001-021	EL CAPITAN BEER S.F.	CA	G	
005	A-001-023	GRAFS DRINK "THE BEST WHAT GIVES" (WITH CHAIN AND GRAF BOTTLE)	WI	EX	
006	A-001-033	AMERICAN BREWING CO. NEW ORLEANS, LA. REGAL LAGER IN BOTTLES & KEGS	LA	G	
007	A-001-047	SANTA CRUZ BREWING CO. SANTA CRUZ EXCELSIOR BEER	CA	G	
008	A-001-999	PARFAY (SODA POP)		G	
009	A-002-999	MIKE MEADOR EFFINGHAM, KANSAS	KS	G	
010	A-002-999	JOHNSONS LIQUOR STORE		EX	
011	A-004-015	LEISY'S TEMP-BREW		VG	
012	A-005-074	JAKE'S "MASTERBRU" "THE FLAVORS THERE" 1231 LAKE POINTE AVE. LENOX 5090	MA	VG	
013	A-005-999	DAVISON OIL CO. CLARINDA-MANNING		G	
014	A-008-001	IN YOUR HOME USE JACOB RUPPERT KNICKERBOCKER	NY	VG	
015	A-012-001	BURGERMEISTER A TRULY FINE PALE BEER / SHRINE VICTORY CONVENTION JULY 1946 SAN FRANCISCO	CA	VG	
016	A-015-004	COOK'S EVANSVILLE, IND. (NO GAS KEY)	IN	VG	
017	A-015-019	FREMONT BREWING CO. DRINK PILSENER BEER	NE	EX	
018	A-021-002	BLATZ MILWAUKEE / BLATZ OLD HEIDELBERG	WI	VG	
019	A-021-026	INSIST ON HOCH BRAU "THE DEPENDABLE BREW"		VG	
020	A-021-042	MOOSE BREWING CO. PENNSY PILSENER BEER	PA	G	
021	A-021-999	"COMPLIMENTS" HIXSON'S CAFÉ AND BAR LAMAR, COLO.	CO	EX	
022	A-021-999	WEAVER MOTORS FORD SALES-SERVICE PHONE 65 228 MAIN ST. FRENCH LICK	IN	G	
023	A-023-001	BLACKHAWK BEER (VAR (B) SMALL LETTERS)	IA	EX	
024	A-027-001	FIRST PRIZE BEER - PETER DOELGER FIRST PRIZE BREWERY N.Y. / PETER DOELGER FIRST PRIZE BOTTLED BEER BEST BEER BREWED (MINIMUM BID \$60)	NY	VG	
025	A-029-005	PABST BLUE RIBBON BREW / THE BREW THAT BRINGS BACK MEMORIES (REVERSE HAS STRAIGHT LETTERS)	WI	VG	
026	A-029-007	RAINIER OLD GERMAN LAGER / RAINIER LIME RICKEY	CA	VG	
027	A-029-014	POTOSI BREWING CO. POTOSI, WIS. / DRINK POTOSI BEER	WI	G	
028	A-034-002	7TH ST. MALT CO. PHONE 4350 117 NO. 7TH ST. ALLENTOWN, PA. (MINIMUM BID \$50)	PA	EX	

April 1998 JFO Auction-Closing May 19, 1998- Name & Mem #:

029	A-035-999	SHENANDOAH TIRE RUBBER CO. SHENANDOAH, IOWA	IA	G	
030	A-036-999	SOMMERS HOME OIL CO. QUAKER STATE OILS & GREASES		EX	
031	A-053-999	COMPLIMENTS THE ELK CENTERVILLE, S.D.	SD	G	
032	A-056-001	MILLER WANTS YOU TO BUY GENUINE DRAFT SHARP'S LITE HIGH LIFE	WI	M	
033	B-002-004	FEIGENSPAN P.O.N. THE BEER THAT BUILDS (VAR (B) STEEL) (80 % PAINT)	NJ	VG	
034	B-002-006	HAMM'S FAMOUS BEER HAMM'S ST. PAUL	MN	G	
035	B-002-007	FRED KRUG BREWING CO. LUXUS THE BEER YOU LIKE (STEEL)	NE	EX	
036	B-002-010	OLD MISSION LAGER TRADITIONALLY GOOD MADE IN SAN DIEGO (5 % PAINT)	CA	VG	
037	B-013-042	BLATZ MILWAUKEE / DRINK OLD HEIDELBERG	WI	VG	
038	B-013-106	TRY "VERIBEST" MALT / MILWAUKEE DELICATESSEN, INC. LINCOLN, NEBR.	NE	G	
039	B-014-028	HAUENSTEINS NEW ULM, MINN. QUALITY BEVERAGES	MN	VG	
040	B-014-055	MINNEAPOLIS BREWING CO. MINNEAPOLIS U.S.A. MINNEHAHA	MN	G	
041	B-014-139	DRINK GOLDEN GLOW MADE FROM / 5% LAGER BREW	CA	G	
042	B-014-141	COMPLIMENTS OF HAGEN-BECKER CO. ST. PAUL, MINN. / "HOMA" AND "SPEZIAL" QUALITY MALT EXTRACTS	MN	G	
043	B-014-999	MADE IN REGINA THE REGINA BEER "QUEEN CITY OF THE PLAINS"		VG	
044	B-018-022	DUBUQUE BREWING & MALTING CO. DUBUQUE, IOWA / "BANQUET" THE BEER FOR YOU	IA	G	
045	B-018-045	MANITOWOC PRODUCTS COMPANY MANITOWOC, WISCONSIN / KINGSBURY PALE	WI	G	
046	B-018-046	KEY TO METZ BROS. BR'G CO. OMAHA'S FAVORITE BEER	NE	VG	
047	B-019-007	DRINK DICK BROS' PILSENER BEER, QUINCY, ILL.	IL	G	
048	B-019-012	DRINK GUNDS KEG AND BOTTLE BEERS LACROSSE, WIS. GOLD MEDAL 1904	WI	G	
049	B-019-018	HEIDEL BRAU BOTTLED BEER / WESTERN BREW BOTTLED BEER	IA	VG	
050	B-019-019	KING'S BOHEMIAN BEER	MA	G	
051	B-019-170	MINNEAPOLIS BREWING CO. GOLDEN GRAIN BELT BEERS	MN	G	
052	B-021-062	OLD STANDARD BEER		G	
053	B-021-063	CALL FOR QUANDT'S FAMOUS LAGER BEER TEL. 587 TROY, N.Y.	NY	G	
054	B-021-097	GOOD OLD "BLATZ" / PRIVATE STOCK LEADS THEM ALL	WI	VG	
055	B-021-469	CALL FOR JETTERS OLD AGE BOTTLE BEER	NE	VG	
056	B-022-024	BOWLER BROTHERS, LIMITED -BREWERS- WORCESTER, MASS. / TADCASTER ALE	MA	G	
057	B-023-059	ATLAS BREWING CO. CHICAGO TEN PHONES CANAL 6200 / ATLAS FOR EVERYBODY	IL	EX	
058	B-023-999	DRINK MOLSON'S ALE (CANADIAN)		VG	
059	B-024-001	ACME BEER	CA	M	
060	B-024-005	BURGERMEISTER BEER / SAME	CA	EX	
061	B-024-013	GB LAGER	CA	EX	
062	B-053-999	BALL QUICK SHOE REPAIR CO. / 66 NO. CLINTON AVE. ROCHESTER, N.Y.	NY	VG	
063	B-070-999	(MARKED ONLY MAKERS NAME) (TOUGH TOUGH TYPE TO FIND)	CT	VG	
064	C-004-001	PABST BLUE RIBBON / THE BEER OF QUALITY	WI	G	
065	C-006-004	PABST BLUE RIBBON / THE BEER OF QUALITY	WI	EX	
066	C-007-001	UTICA CLUB PILSENER-WUERZBURGER IT'S IN THE TASTE-PALE DRY GINGER ALE / SAME	NY	VG	
067	C-007-001	UTICA CLUB PILSENER-WUERZBURGER IT'S IN THE TASTE-PALE DRY GINGER ALE / SAME	NY	EX	
068	C-009-003	BLATZ MILWAUKEE (VB IN STAR)	WI	VG	

April 1998 JFO Auction-Closing May 19, 1998- Name & Mem #:

069	C-009-031	DRINK VALLEY FORGE SPECIAL / SAME	PA	G	
070	C-010-026	EMPIRE STATE BREWERY CORP. OLEAN, N.Y.	NY	EX	
071	C-010-027	DRINK GRAF'S BEVERAGES PHONE MITCHELL 3500 / CARBONATED BEVERAGES "THE BEST SINCE 1873"	WI	VG	
072	C-011-004	BLATZ MILWAUKEE / BLATZ OLD HEIDELBERG	WI	VG	
073	C-012-121	HOP GOLD BEER / SILVER SPRINGS BEER	WA	VG	
074	C-013-119	YOERG'S CAVE AGED BEER ST. PAUL	MN	EX	
075	C-013-208	COORS LIGHT	CO	M	
076	C-020-025	ELIZABETH BREWING CORPORATION AT ELIZABETH, N.J. / ELIZABETH BREW (BEARDED MAN WITH HAT)	NJ	VG	
077	C-032-003	ENTERPRISE BR'G. CO. FALL RIVER OLD TAP ALE	MA	VG	
078	C-042-001	BUSCH BEER	MO	M	
079	C-999-999	SODA C-LOT 1) C-9 C&C GINGER ALE 2) C-9 SARATOGA VICHY WATER 3) C-6 CANADA DRY 4) C-41 CANADA DRY 5) C-9 WHITE ROCK 6) C-13 ORANGE CRUSH 7) C-12 CANADA DRY 8) C-12 CANADA DRY (GRILLED) 9) C-14 CANADA DRY (GRILLED) 10) C-13 CANADA DRY 11) C-13 SARATOGA		VG	
080	CBO-HBO-12	BARCALO-BUFFALO-U.S.A. PAT-D-111564	NY	G	
081	D-001-014	FAUERBACH	WI	VG	
082	D-002-010	PERFECTION / SAME		VG	
083	D-003-013	SCHOENHOFEN / EDELWEISS	IL	G	
084	D-003-999	CROWN CORK / OPENER		G	
085	D-005-002	BLATZ	WI	VG	
086	D-005-004	COOK'S BEER	IN	VG	
087	D-005-012	POINTER BEER	WI	VG	
088	D-006-001	BRUCK'S	OH	VG	
089	D-009-004	KINGSBURY	WI	VG	
090	D-009-008	OSHKOSH / RAHR BEER	WI	VG	
091	D-009-011	ZOLLER'S BEER / SAME	IA	EX	
092	D-009-018	HARDING'S / SAME	IL	VG	
093	E-001-014	TROMMER'S GENUINE ALE TASTE AND COMPARE! / TROMMER'S MALT BEER TASTE & COMPARE!	NY	EX	
094	E-001-032	JOLIET CITIZENS BREWING CO.	IL	VG	
095	E-002-017	DRINK PROGRESS BEER / SAME	OK	VG	
096	E-003-013	DRINK KAMM'S QUALITY BEER / SAME	IN	G	
097	E-003-064	GREAT FALLS LAGER BEER	MT	EX	
098	E-004-005	DRINK ARROW BEER / IT HITS THE SPOT (IN ARROW)	IN	VG	
099	E-004-008	ATLAS B'R'G. CO. CHICAGO CANAL 6200 / FOR LOVERS OF BEER ATLAS CERTIFICATE BREW	IL	VG	
100	E-004-010	ATLAS B'R'G. CO. CHICAGO CANAL 6200 / REACH FOR A TREAT DRINK ATLAS SPECIAL BREW	IL	G	
101	E-004-014	BLATZ MILWAUKEE / DRINK OLD HEIDELBERG BREW	WI	G	
102	E-004-018	BUSHKILL BEER / SAME	PA	VG	
103	E-004-025	DRINK COORS GOLDEN BEER / SAME (VAR (B) SQUARE HEAD)	CO	VG	
104	E-004-033	FALLS CITY BREWING CO. LOUISVILLE, KY. / FALLS CITY BEER	KY	VG	
105	E-004-037	GENERAL BREWING CORPORATION SAN FRANCISCO / HERE'S LUCK WITH LUCKY LAGER (VAR (B) 'WITH-LUCKY')	CA	VG	
106	E-004-038	THE GLOBE BREWING CO. BALTO, MD. / DRINK ARROW BEER	MD	G	
107	E-004-040	GOLDEN WEST BREWING CO. OAKLAND-SAN FRANCISCO-LOS ANGELES / GOLDEN GLOW BEER	CA	G	

April 1998 JFO Auction-Closing May 19, 1998- Name & Mem #:

108	E-004-047	HUDEPOHL BREWING CO. / CINCINNATI OHIO (SCREWDRIVER TIP)	OH	VG	
109	E-004-049	INDEPENDENT MILWAUKEE BREWERY / BRAUMEISTER BEER	WI	EX	
110	E-004-054	LIEBMAN BREWERIES, INC. / SAME	NY	G	
111	E-004-055	LION BREWERY OF N.Y.C. / SAME	NY	VG	
112	E-004-061	MILLER HIGH LIFE BEER / MILLER HIGH LIFE SYRUP	WI	VG	
113	E-004-062	MILLER HIGH LIFE BEER / UNIVERSITY CLUB (VAR (A) ROUND HEAD)	WI	VG	
114	E-004-065	LOUIS F. NEUWEILER'S SONS ALLENTOWN, PA. / NEUWEILER'S BEER	PA	VG	
115	E-004-068	PRIMA BEER / CHICAGO PHONE MOHAWK 2300	IL	G	
116	E-004-117	M.K. GOETZ BREWING CO. / COUNTRY CLUB SPECIAL	MO	G	
117	E-004-136	REGAL AMBER BREWING CO. / REGAL PALE DELUXE (COPPER)	CA	G	
118	E-004-139	RHINELANDER / THE BEER OF THE CENTURY	WA	VG	
119	E-004-215	BROADWAY BREWING CO. INC. BUFFALO, N.Y. / STEIN'S PILSENER TYPE AND WURZBURGER STYLE BEERS	NY	VG	
120	E-004-337	"DON'T SAY BEER SAY SCHLITZ" / THE BEER THAT MADE MILWAUKEE FAMOUS (VAR (B) NO QUOTES BACKSIDE (BREW))	WI	VG	
121	E-006-008	BURKHARDT'S AKRON, O. SELECT BEER / KEY TO BURKHARDT'S BEER	OH	VG	
122	E-006-109	JORDAN BEER JORDAN, MINN.	MN	G	
123	E-006-140	JENNER SPRINGS BRG. CO. BOB'S BEER	PA	VG	
124	E-007-001	ATLAS BR'G. CO. CHICAGO. / SAME	IL	VG	
125	E-007-052	DRINK TIVOLI / SAME	CO	PO	
126	E-007-078	MANHATTAN BOTTLING WORKS PHONE WEST 206	WI	G	
127	E-007-999	DRINK "HOWDY" WOOD RIVER BOTTLING WORKS PHONE 300-R		G	
128	E-008-059	ISENGARTS TROY'S BEST BEER / SAME (VERY PITTED)	NY	PO	
129	E-008-110	REIF'S SPECIAL / SAME (CHATTANOOGA BREWING CO PROHIBITION DRINK)	TN	VG	
130	E-008-999	O'KEEFE'S DRY GINGER ALE / O'KEEFE'S SPECIAL SODA		VG	
131	E-009-999	DRINK MOXIE CLEAN / WHOLESOME REFRESHING		G	
132	E-011-001	ATLAS BREWING COMPANY CHICAGO, ILLINOIS / ATLAS PRAGER BEST BEER IN TOWN	IL	VG	
133	E-011-003	ANHEUSER-BUSCH BUDWEISER / SAME	MO	VG	
134	E-011-005	BUDWEISER TRADE MARK OF ANHEUSER-BUSCH / SAME	MO	VG	
135	E-011-006	KAIER'S OUTSTANDING BEER / SAME	PA	G	
136	E-011-007	KAIER'S SPECIAL BEER FAMOUS AS ANTHRACITE / KAIER'S OLD DIAMOND ALE & PORTER	PA	G	
137	E-011-008	KAIER'S SPECIAL BEER FAMOUS AS ANTHRACITE / KAIER'S OLD DIAMOND ALE & PORTER	PA	G	
138	E-011-012	SCHOENHOFEN EDELWEISS CO. CHICAGO, ILLINOIS / EDELWEISS BEER A CASE OF GOOD JUDGMENT	IL	VG	
139	E-011-013	STEGMAIER BREWING CO. WILKES-BARRE, PA. / BREWERS AND BOTTLERS OF GOLD MEDAL BEER	PA	G	
140	E-014-001	FAMOUS A B C LAGER BEER / SAME		VG	
141	E-014-002	A-1 PILSNER BEER PHOENIX, ARIZ. / SAME	AZ	G	
142	E-014-005	ACME BREWING CO. LOS ANGELES / ACME BEER	CA	G	
143	E-014-015	BAVARIAN BREWING CO. COVINGTON, KY. / BAVARIAN'S OLD STYLE BEER (VAR (B) COVINGTON. KY.)	KY	VG	
144	E-014-019	BECKER'S BEST BEER	UT	VG	
145	E-014-022	BILLINGS BREWING CO. BILLINGS, MONTANA	MT	VG	
146	E-014-024	BLACKHAWK BEER BLACKHAWK BEER	IA	VG	
147	E-014-026	BLATZ MILWAUKEE BEER / SAME	WI	G	

April 1998 JFO Auction-Closing May 19, 1998- Name & Mem #:
--

148	E-014-032	GOOD OLD BRUCKS BEERS / CINCINNATI'S OLDEST BREWERY	OH	EX	
149	E-014-036	BURGERMEISTER A TRULY FINE PALE BEER / SAME	CA	EX	
150	E-014-046	COLUMBIA BREWING CO. ALPEN BRAU / SAME	MO	VG	
151	E-014-050	COORS AMERICA'S FINE LIGHT BEER / SAME (VAR (B) SLOGAN 2 LINES)	CO	EX	
152	E-014-059	DICK BROS. BRG. CO. QUINCY, ILLINOIS / SAME	IL	G	
153	E-014-060	DUBOIS BUDWEISER / DUBOIS EXPORT	PA	VG	
154	E-014-063	DUQUESNE PILSENER / SILVER TOP BEER	PA	EX	
155	E-014-068	NOW TASTE EASTSIDE BEER / SAME	CA	M	
156	E-014-069	PUT EASTSIDE INSIDE / SAME	CA	G	
157	E-014-081	FALSTAFF BREWING CORP. ST. LOUIS OMAHA-NEW ORLEANS / THE CHOICEST PRODUCT OF THE BREWERS' ART	MO	VG	
158	E-014-086	FESSENMEIER BRG. CO. HUNTINGTON, W.VA. / WEST VIRGINIA BEER AND ALE	WV	EX	
159	E-014-090	DRINK FITGER'S REX BEER / BREWED IN DULUTH, MINN.	MN	G	
160	E-014-095	FOX HEAD LAGER BEER MADE WITH WAUKESHA WATER	WI	G	
161	E-014-100	G B BEER G B ALE / SAME	CA	VG	
162	E-014-108	GLUEK BRG. CO. MINNEAPOLIS / ENJOY GLUEK'S BEER	MN	VG	
163	E-014-110	M.K. GOETZ BREWING CO. ST. JOSEPH, MO. / COUNTRY CLUB BEER PILSENER BEER	MO	G	
164	E-014-112	M.K. GOETZ BREWING CO. ST. JOSEPH, MO. / COUNTRY CLUB PILSENER COUNTRY CLUB SPECIAL	MO	G	
165	E-014-113	GOLDEN GLOW BEER AND ALE / SAME	CA	VG	
166	E-014-117	FRIENDLY GRAIN BELT / SAME	MN	EX	
167	E-014-118	GRAIN BELT BEER...FROM PERFECT BREWING WATER / SAME	MN	EX	
168	E-014-125	GREAT FALLS LAGER BEER	MT	EX	
169	E-014-127	GRIESEDIECK BROS. ST. LOUIS-BEER / SAME	MO	VG	
170	E-014-128	GRIESEDIECK BROS. ST. LOUIS LIGHT LAGER / SAME	MO	VG	
171	E-014-131	HABERLE BRG. CO. CONGRESS BEER / SAME	NY	VG	
172	E-014-135	THEO. HAMM BRG. CO. ST. PAUL, MINN. / THE BEER REFRESHING	MN	EX	
173	E-014-138	PETER HAND BREWERY CO. MEISTER BRAU	IL	VG	
174	E-014-162	KEELEY HALF & HALF BLEND OF BEER & ALE / SAME	IL	VG	
175	E-014-163	KESSLER BREWING CO. KESSLER BEER / SAME	MT	VG	
176	E-014-167	FRED KOCH BREWERY DUNKIRK, N.Y. / SAME	NY	VG	
177	E-014-176	(STAR) LONE STAR BEER (STAR) SAN ANTONIO, TEXAS / SAME	TX	VG	
178	E-014-177	LUCKY LAGER AGE-DATED BEER / SAME	CA	EX	
179	E-014-178	LUCKY LAGER LUCKY ALE / SAME	CA	VG	
180	E-014-179	MAIER SELECT BEER / MAIER SINCE 1875	CA	EX	
181	E-014-181	MANKATO BREWING CO. KATO LAGER BEER / SAME	MN	VG	
182	E-014-185	BOTTLE OF METZ PLEASE METZ JUBILEE BEER / SAME	NE	VG	
183	E-014-186	DRINK METZ JUBILEE EXTRA DRY BEER / SAME	NE	EX	
184	E-014-192	MONTEREY BREWING COMPANY / MONTEREY BEER	CA	G	
185	E-014-193	MUEHLEBACH BEER QUALITY SINCE 1868 / SAME	MO	VG	
186	E-014-208	OLYMPIA "IT'S THE WATER" / SAME	WA	EX	
187	E-014-219	PHOENIX BREWERY BUFFALO, N.Y. / CREAM ALE LIGHT LAGER	NY	VG	
188	E-014-226	QUEEN CITY BRG. CO. CUMBERLAND, MARYLAND / THE ORIGINAL OLD GERMAN BEER (VAR A)	MD	VG	

April 1998 JFO Auction-Closing May 19, 1998- Name & Mem #:

189	E-014-228	RAINIER BEER-ALE / SAME	CA	VG	
190	E-014-230	RAMS HEAD ALE THE ARISTOCRAT OF ALES / MAKE FRIENDS WITH VALLEY FORGE BEER	PA	VG	
191	E-014-237	REGAL PALE BEER LIGHT AND MELLOW / SAME	CA	EX	
192	E-014-249	SAN ANTONIO BREWING ASS'N / PEARL BEER PEARL BEER	TX	VG	
193	E-014-257	SCHLITZ LAGER IN CAP-SEALED CANS / SAME	WI	VG	
194	E-014-261	SCHMIDT BREWING CO. ST. PAUL, MINN. / SCHMIDT BREWING CO. DRINK CITY CLUB	MN	VG	
195	E-014-264	SCHMIDT'S OF PHILADELPHIA/BEER-ALE BREWERS SINCE 1860	PA	EX	
196	E-014-266	SHERIDAN EXPORT BEER / SHERIDAN WYOMING	WY	VG	
197	E-014-267	SOUTHERN SELECT BEER / SAME	TX	PO	
198	E-014-284	TIVOLI BEER DENVER, COLO. / SAME	CO	VG	
199	E-014-289	UNITED STATES BREWING CO. CALL FOR GOLD CROWN BEER / UNITED STATES BREWING CO. GOOD OLD RHEINGOLD BEER	IL	VG	
200	E-014-299	THE GEO. WIEDEMANN BREWING CO., NEWPORT, KY. / BOHEMIAN ROYAL AMBER	KY	VG	
201	E-014-300	WIEDEMANN'S FINE BEER / SAME	KY	EX	
202	E-014-314	ARIZONA APACHE BEER HOME INDUSTRY	AZ	G	
203	E-014-319	BECKER BREWING & MALTING CO.	UT	G	
204	E-014-333	BUDWEISER KING OF BEERS / SAME	MO	EX	
205	E-014-343	COOPER'S BEER PHILA., PA. / NAMAR PREMIUM BEER	PA	VG	
206	E-014-356	FALSTAFF BREWING CORP. ST. LOUIS, MO. / SAME	MO	EX	
207	E-014-373	R.H. GRAUPNER HARRISBURG, PA. / SAME	PA	VG	
208	E-014-374	SICKS' GREAT FALLS BREWERIES, INC. / SAME	MT	G	
209	E-014-388	MAKE MINE! KARLSBRAU / SAME	MN	G	
210	E-014-391	KIEWEL'S WHITE SEAL BEER	MN	VG	
211	E-014-419	PEARL BREWING CO. PEARL BREWING CO. / PEARL BEER PEARL BEER	TX	EX	
212	E-014-429	REGAL PALE BEER REGAL PALE BEER / ONE OF AMERICA'S 2 GREAT BEERS	CA	VG	
213	E-014-455	WALTER BREWING COMPANY / SAME	WI	G	
214	E-014-461	BALLANTINE ALES & BEER / BANGOR BOTTLING CO. INC. ARCTIC SPRING BEVERAGES	WI	VG	
215	E-014-470	BLATZ BEER BLATZ BEER / SAME	WI	G	
216	E-014-504	THE GREATER NEW YORK BREWERY INC. / SAME	NY	VG	
217	E-014-530	OSHKOSH BREWING CO. OSHKOSH, WIS. / OSHKOSH BREWING CO. OSHKOSH, WIS. (NO H)	WI	VG	
218	E-014-536	RAINIER BREWING CO. SAN FRANCISCO / BEER-RAINIER-ALE BEER-RAINIER-ALE	CA	VG	
219	E-014-543	GOLD SHIELD BEER / TRY ROYAL BOHEMIAN	MN	VG	
220	E-014-559	STERLING BREWERS EVANSVILLE, IND. / SAME	IN	VG	
221	E-014-614	HORNELL BRG. CO. INC. K.D.K. CREAM ALE / OLD RANGER BEER AND ALE	NY	VG	
222	E-014-614	HORNELL BRG. CO. INC. K.D.K. CREAM ALE / OLD RANGER BEER AND ALE	NY	G	
223	E-014-623	METZ BEER SINCE 1864 METZ JUBILEE BEER / SAME	NE	VG	
224	E-014-653	WARSAW BREWING CORP. / BURGEMEISTER BEER (COPPER)	WI	EX	
225	E-014-697	SCHMIDT BREWING CO. DRINK CITY CLUB / SAME	MN	VG	
226	E-014-705	OERTEL BREWING CO. LOUISVILLE, KY. / CHEER UP WITH OERTEL'S '92 BEER	KY	VG	
227	E-014-999	SODA 1) ADELES BEVERAGES 2) GIANT COLA 3) ROYAL CROWN COLA 4) RED ROCK COLA 5) ROCK SPRING BEVERAGES		VG	
228	E-014-999	SODA 1) WHITE ROCK 2) BIG-GIANT COLA 3) TRU-ADE 4) DRINK KECK'S 5) LOTTA COLA 6) VERNOR GINGER ALE		VG	

April 1998 JFO Auction-Closing May 19, 1998- Name & Mem #:

229	E-014-999	SODA 1) RITZ-E BEVERAGES 2) ROYAL CROWN COLA 3) SPARKLETT'S WATER 4) BUBBLE UP 5) DRINK LEMMY		VG	
230	E-014-999	SODA 1) VESS BEVERAGES 2) BIRELEY ORANGE 3) COCA-COLA 4) DAD'S ROOT BEER 5) DOUBLE-COLA 6) MISSION ORANGE		VG	
231	E-014-999	SODA 1) COCA-COLA 2) BARQ'S 3) PHILLIPS BROS GINGER ALE 4) MISSION BEVERAGES 5) K S FRUIT BEVERAGES		VG	
232	E-014-999	SODA 1) BIRELEY'S BEVERAGES 2) NESBITTS 3) KIST 4) B-1 LEMON-LIME 5) POLAND WATER 6) ROYAL CROWN COLA		VG	
233	E-999-999	SODA 1) E-14 SIMPSON SPRING BEVERAGES 2) E-14 HUSTING'S BEVERAGES 3) E-9 CLICQUOT CLUB 4) E-9 INDIAN CLUB GINGER ALE 5) E-9 GOSMAN'S GINGER ALE		VG	
234	F-002-002	BLATZ PILSENER BEER	WI	VG	
235	F-002-999	WHITE ROCK SPARKLING BEVERAGES		VG	
236	G-001-004	BUCKEYE BEER PICKS YOU UP (WAITER)	OH	PO	
237	G-001-007	EBLING'S	NY	G	
238	G-001-009	ESSLINGER'S BEER PHILADELPHIA, PA. (LITTLE MAN)	PA	G	
239	G-001-010	FOX HEAD WAUKESHA, WIS. (BOTTLE)	WI	G	
240	G-001-012	DRINK GRAND PRIZE LAGER BEER	TX	G	
241	G-001-016	LATROBE BREWING CO. LATROBE, PA. LATROBE BEER (BOTTLE)	PA	VG	
242	G-001-018	OLD READING BEER (BOTTLE)	PA	G	
243	G-001-021	PABST BLUE RIBBON BEER (BOTTLE)	WI	VG	
244	G-001-022	PIEL'S BEER (BOTTLE)	NY	G	
245	G-001-023	QUANDT TROY, N.Y. QUANDT'S ALE & LAGER (BOTTLE)	NY	VG	
246	G-001-024	SCHAEFER FINE BEER (BOTTLE) (VAR (B) VERTICAL)	NY	G	
247	G-001-025	TRU-BLU BEER & ALE	PA	G	
248	G-001-037	OLD RELIABLE METZ BEER (BOTTLE)	NE	G	
249	G-001-040	ROBIN HOOD BEER HITS THE SPOT (BOTTLE)	NE	G	
250	G-002-003	HAMPDEN LIGHT BEER MILD ALE	MA	VG	
251	G-002-004	HAMPDEN MILD ALE	MA	VG	
252	G-005-999	WM J. FARRELL 89-91 WATER ST. N.Y. "SEALTITE TO SEAL RIGHT" BEST CROWNS AND OPENERS	NY	G	
253	G-008-013	GLUEK'S FIRST PRIZE BEER MINNEAPOLIS, MINN.	MN	EX	
254	G-013-007	OLD TAVERN (OLD TAVERN BRG. CO.)	WI	VG	
255	G-015-001	COORS	CO	EX	
256	G-018-001	COORS	CO	G	
257	G-021-004	NORTHAMPTON BOTTLING WORKS PHONE 207 1340 NEWPORT AVE. NORTHAMPTON, PA.	PA	EX	
258	G-024-UL	COORS LIGHT	CO	EX	
259	G-029-001	COORS	CO	EX	
260	G-036-001	MICHELOB DRY (NECK LABEL) MICHELOB DRY BEER (BOTTLE LABEL)	MO	M	
261	H-002-030	PABST MILWAUKEE	WI	VG	
262	H-005-011	FLOCK BREWING CO. / IT STANDS ON TOP	PA	VG	
263	H-007-002	BLATZ MILWAUKEE'S MOST EXQUISITE BEER	WI	G	
264	H-008-005	ESSLINGER'S QUALITY BEER (LITTLE MAN STANDING)	PA	VG	
265	H-008-016	NARRAGANSETT BREWING CO. CRANSTON, R.I., U.S.A. FAMOUS NARRAGANSETT BANQUET ALE	RI	EX	
266	I-007-002	FOR OPENING ACME BEER KEGLET	CA	VG	
267	I-007-005	ATLAS PRAGER BEER	IL	VG	
268	I-007-007	HANDY WAY TO ORDER BALLANTINE'S ALE-BEER (HAND & 3 RINGS)	NJ	EX	

April 1998 JFO Auction-Closing May 19, 1998- Name & Mem #:

269	I-007-009	FOR OPENING BROWN DERBY BEER CANS OR BOTTLES	CA	G	
270	I-007-010	COORS BEER GOLDEN, COLO.	CO	VG	
271	I-007-012	DREWRY'S CANADA'S PRIDE SINCE 1877	IN	G	
272	I-007-013	ESSLINGER'S BEER AND ALE (WAITER)	PA	EX	
273	I-007-017	GENESEE BREWING CO. INC. ROCHESTER, NEW YORK GENESEE BEER AND 12 HORSE ALE	NY	EX	
274	I-007-021	PETER HAND BREWERY CO. MEISTER BRAU "THE BEER"	IL	VG	
275	I-007-025	LIEBMANN BREWERIES RHEINGOLD BEER SCOTCH ALE	NY	VG	
276	I-007-025	LIEBMANN BREWERIES RHEINGOLD BEER SCOTCH ALE	NY	EX	
277	I-007-032	FOR OPENING PABST TAPA CAN (VAR (B) DOUBLE SCRIPT PABST / KEGLINED)	WI	VG	
278	I-007-036	JACOB RUPPERT BREWERY NEW YORK	NY	EX	
279	I-007-038	FOR OPENING SCHMIDT'S CITY CLUB BEER (COPPER)	MN	EX	
280	I-007-043	FOR OPENING ACME BEER AND ALE	CA	VG	
281	I-007-048	BUDWEISER KING OF CANNED BEER	MO	EX	
282	I-007-052	HAMM'S BEER SMOOTH & MELLOW	MN	VG	
283	I-007-059	SCHAEFER BEER AT ITS BEST	NY	VG	
284	I-007-065	HARVARD BREWING CO. LOWELL, MASS.	MA	G	
285	I-007-077	ACME BREWERIES SAN FRANCISCO ACME BEER AND ALE	CA	VG	
286	I-011-292	THIS CALLS FOR BUDWEISER KING OF BEERS (RO-LOC PROCESS) (ENAMELLED ON-TOUGH TO FIND)	MO	EX	
287	I-017-060	HAMM'S BEER (TREE LOGO) (REST IN HANDBOOK)	MN	EX	
288	I-017-196	"VALLEY BREW" PREMIUM BEER / SAME	CA	VG	
289	I-025-001	NORTHAMPTON BREWERY CORP. NORTHAMPTON, PA. TRU-BLU BEER ALE (RAREST OF THE "I" TYPES MINIMUM BID \$50)	PA	VG	
290	L-002-001	ANHEUSER BUSCH (EAGLE IN A) VAR A EAGLE WINGS CLOSED	MO	VG	
291	M-003-002	BISMARCK BEER (B LOGO)/DEEP CELLAR LAGERED (NO PAINT)	IL	G	
292	M-038-006	1968 JOS. SCHLITZ BREWING CO. MILWAUKEE, WIS. GENUINE DRAFT BEER / OLD MILWAUKEE	WI	EX	
293	M-055-001	INTERNATIONAL BREWERIES INC. BUFFALO, N.Y. FRANKENMUTH, MICH. (RED/WHITE)	NY	VG	
294	N-009-015	BLATZ MILWAUKEE BEER LEADS THEM ALL	WI	VG	
295	N-012-001	BECK'S BUFFALO'S BEST BEER	NY	VG	
296	N-018-002	BUDWEISER KING OF BEERS (EAGLE IN A)	MO	VG	
297	N-024-999	HUTCHINSON CROWNS (MADE CROWN BOTTLE CAPS)	IL	EX	
298	N-028-002	HAMM'S BEER ELMER CROSSER SHELTON, IOWA	IA	G	
299	N-043-999	THE PASTIME WHITEFISH, MONT.	MT	VG	
300	O-002-012	HIGHLANDER SCHMIDT'S DILLON BEVERAGES CANDY AND TOBACCO PHONE 154-W DILLON BOTTLING WORKS	MT	G	
301	O-002-999	REFRESH WITH SMILE (ORANGE SMILE MAN)		VG	
302	O-004-001	COORS AMERICA'S FINE LIGHT BEER	CO	EX	
303	O-004-003	IF IT'S GIBBONS IT'S GOOD (WITH ORIGINAL BOX)	PA	M	
304	O-005-015	STEGMAIER'S GOLD MEDAL BEER WILKES-BARRE, PENNA.	PA	VG	
305	O-005-999	TRU-ADE		VG	
306	O-005-999	TOME BACARDI		G	
307	O-016-002	STEGMAIER GOLD MEDAL BEER WILKES-BARRE, PA.	PA	VG	
308	P-022-010	MOERLEIN CROWNED WHEREVER EXHIBITED (M LOGO) / CINCINNATI, U.S.A.	OH	EX	
309	P-023-004	WAVERLY BREWING CO. BREWERS OF UNEXCELLED BEERS WAVERLY, IOWA (MINIMUM BID \$50)	IA	G	

Mem#	Last Name	First Name	Spouse	Street	City	State	Zip	Phone/E-Mail	Specialties/(Sponsor)
845	Abate	Gene	Charlene	9 Brook Rd	Kendall Park	NJ	08824-1501	(732) 422-0923	Cans, Coasters, Openers (John Stanley)
679	Alcorn	Dewaine	Irma	4416 Waterbury Ln	Lincoln	NE	68516-1520	(402) 489-7564	Nebraska & Minnesota Beer Openers (A A Mayberry)
230	Anheuser-Busch Co Inc	Corporate Library		PO Box 1828 Bechtold Station	Saint Louis	MO	63118-0828	(314) 577-2000	(Attn. Mary Butler)
751	Arber	William	Barbara	11162 Broadway St	Alden	NY	14004-9515	(716) 681-4833	All Openers & Figurals (Bob McNary)
619	Archer	John		2051 Allen Blvd Apt 3B	Middleton	WI	53562-3454	(608) 238-0651	"A" & "B" Types and Wisconsin Openers
810	Armstrong	Steve		PO Box 1938	Orofino	ID	83544-1938	(208) 476-0128 E-Mail sunset@clearwater.net	Montana & Idaho Openers & Other Breweriana
771	Atkinson	Murray	Pam	9096 E Bella Vista Ct	Floral City	FL	34436-2401	(352) 637-6016	Any Beer Advertising Types plus Can Openers & Corkscrews
641	Atkinson	Tom	Gillian	5 Old Long Plain Rd	Amherst	MA	01002-9519	(413) 548-9608	Corkscrews
415	Bachmann	Kurt	Debbie	57883 Hanover Rd	Washington	MI	48094-3083	(810) 677-3284 E-Mail kbach@clear.com	All Types, All Advertising, Figurals, Plastic, Wood, Steel
729	Bailey II	Eddie	Carol	4408 NE Sunnybrook Ln	Kansas City	MO	64117-1922	(816) 459-9607	Any Advertising Openers and Interesting Figurals (1994 JFO Convention)
846	Barker	John	Julia	143 Appleton St	Boston	MA	02116-6001		Beer Advertising Openers
801	Barr	David		3612 Riddle Ct	Bridgewater	NJ	08807-5553	(908) 725-5083	Beer Openers
406	Barren	Mark		6141 Tachi Dr	Newfane	NY	14108-9517	(716) 778-9724	New York State Openers
416	Bates	Mead	Rosemarie	23 Gardiner St	Darien	CT	06820-5111	(203) 357-0499	Manufacturer of Bottle Openers (Cymba Inc)
859	Bavington	Doug		1092 Transit RD	Victoria British Columbia	CANADA	V8S 5A2	(250) 598-3929 W(250)477-2288	"A" "B" "E" "F" (Today's Collector)
585	Behnken	Ron	Jan	405 S Brewer St	Manchester	IA	52057-2206	(319) 927-2116	Beer Openers with Advertising
389	Benjamin	Marc	Pat	167 Nixon Beach Rd	Edenton	NC	27932-9447	(919) 482-2099	One Of Each Type & Figural Types Which I Don't Have
692	Berlin	Bronson		1701 Alta St	San Luis Obispo	CA	93401-3004	(805) 541-0151	California & West Coast Beer Openers (John Stanley)
841	Bestard	Richard		PO Box 1334	Glendora	CA	91740-1334	(626) 914-4664	All Bottle Openers
202	Biehl	Larry	Fran	448 Crandon Ave	Calumet City	IL	60409-2202	(708) 891-4269	"F" Type Beer Advertising Openers, Beer Letter Openers and Beer Advertising Knives & Matchsafes
786	Bittermann	John		621 Homestead	Joliet	IL	60435-5105	(815) 725-7770	Illinois Openers-All Types & All Illinois Brewery Advertising (Norm Jay)
699	Blalock	Lin	Shirley	908 Wyldewood Rd	Durham	NC	27704-1602	(919) 477-1716	NEHI (John Stanley)
844	Blatz	Leo	Laurie	2829 Sheridan Dr	Tonawanda	NY	14150-9420	(716) 836-5025	Blatz Beer, All Years (Larry Biehl)
767	Bohle	Mylen	Diane	655 Ochoco Ave	Prineville	OR	97754-1230	(541) 447-4295	All Figurals-All Corkscrews-All Bottle Openers
652	Bolam	Bob	Kathy	58 Hillary Dr	Rochester	NY	14624-5245	(716) 889-2561	Openers (Ed Kaye)
745	Boller	Jack	Alice	7208 Green Meadow Dr	Fort Worth	TX	76180-6712	(817) 281-5585	Bottle Openers-Corks-Corkscrews (Cymba, Inc)

Mem#	Last Name	First Name	Spouse	Street	City	State	Zip	Phone/E-Mail	Specialties/(Sponsor)
478	Bolton	Fred	Sue	3015 Cadencia St	Carlsbad	CA	92009-8309	(760) 942-5765	Type "E-14" Openers
195	Braeuner	Raymond	Jerine	1520 Horine Rd	Festus	MO	63028-1040	(314) 937-6805	
772	Breton	Donald	Marilyn	7076 Riddle Rd	Lockport	NY	14094-9331	(716) 434-3089	Beer Openers, All Kinds of Openers, All Breweriana (Anita Gold)
847	Briske	Rick		967 Milford	Cary	IL	60013-1967	(847) 516-9635	Figural Bottle Openers (Cymba/WWW)
528	Britton	Dick	Bonnie	2902 Lacota Rd	Waterford	MI	48328-3127	(248) 683-2134	Any Type of Opener that will Open a Can, Jar, Bottle, Etc, Wall Mounts, Corkscrews, Must be US Made--"No" Figural Wall Mounts
675	Broders	Ed	Patti	10220 Westwood Ave	Baton Rouge	LA	70809-3243	(504) 293-2373 E-Mail ebroders@franklin-press.com	Louisiana Openers & K-Types (Ed Kaye)
398	Bromm	Donald	Ida	3240 Hwy 32	Tekamah	NE	68061-5004	(402) 374-1632	
502	Brunner	William	Jo Ann	8773 W Mineral Point Rd	Mount Horeb	WI	53572-1229	(608) 798-2793	Openers-M-29-30-83-"O"s-Wall Mount
1	Bull	Don	Bonnie	20 Fairway Dr	Stamford	CT	06903-1422	(203) 968-1925 E-Mail corksruer@aol.com	Corkscrews-All, Beer Advertising Knives & Beer Advertising Letter Openers
749	Burgart	Paul		52-A Samoset Ave	Hull	MA	02045-2514	(617) 925-1057	Figural, Flats & Mass. Brewery Openers (FBOC)
805	Burritt	Lew	Millie	125 Vogt Dr	Belle Chase	LA	70037-2625	(504) 394-3567	Breweriana from Dixie Brewing Co (New Orleans) (Art Santen)
822	Burruss III	John		318 Lost Oak Dr	Canyon Lake	TX	78133-5720	(830) 899-7241	B-24s, C-13s, Missouri & Texas Openers (Harriet Waldo)
824	Calhoun	Michael	Linda	424 Joilet Rd	Marquette Heights	IL	61554-1426	(309) 382-2378	Openers & Corkscrews All Types (Don Bull)
793	Call	Roland	Norma	PO Box 424	Woodland	ME	04694-0424	(207) 427-6694	Beer Openers, Any Openers (Cymba WWW)
720	Callies	Joel	Kay	21641 Luan Dr NE	East Bethel	MN	55011-9780	(612) 413-1920	Montana & Minnesota Beer Advertising Openers (Bull Auction)
690	Campbell	Bob	Elayne	9790 N 80th Pl	Scottsdale	AZ	85258-1743	(602) 443-3179	Beer Advertising Openers (Ollie Hibbeler)
4	Cardone	Joe	Mary	917 Gainsborough Rd	Dayton	OH	45420-3709	(937) 254-3018	Pabst Openers
529	Cargile	Michael	Susie	20725 Shaker Blvd	Shaker Heights	OH	44122-2621	(216) 371-8234	Figurals, Nudes, 1930s & 40s Hand Carved Wooden Openers
530	Carlson	Brian		6938 Upper 5th St N	Oakdale	MN	55128-6719	(612) 739-1608	Hamm's
587	Cartwright	John	Cheryll	950 Marlene St Apt B	Ukiah	CA	95482-7446	(707) 463-0955	"A"s, "B"s (Beer & Soda) & Golden West, Port Townsend & Rainier Breweriana
653	Chalk	Jim	Marguerite	3049 Westminster Dr	Saint Charles	MO	63301-0656	(314) 946-2392	"A" & "C" Type Openers (Vic Keown)
733	Clark	Dick	Jackie	8410 S Ave D	Yuma	AZ	85364-8441	(520) 783-2243	All Beer Openers, Mirrors, '56 Chevy's (Ed Kaye)
649	Collier	Wayne	Jeanne	13317 Vista Aroyo	San Antonio	TX	78216-2243	(210) 479-2861	Figural Openers
835	Cook	Dick		31 Clark St	Norwood	NY	13668-1003	(315) 353-2579	Wrought Iron & Brass Figural
345	Counciller	Dr Harry	Carol	PO Box 66 E Main 160	Greensboro	IN	47344-0066	(317) 987-1282	General, Beer

Mem#	Last Name	First Name	Spouse	Street	City	State	Zip	Phone/E-Mail	Specialties/(Sponsor)
204	Cress	David	Susan	1816 Elizabeth St	Janesville	WI	53545-2704	(608) 752-7262	Different, Unusual Shaped Openers
531	Creuziger	Dick		1226 Grove Ave	Racine	WI	53405-3043	(414) 633-9245	Pabst
411	Cross	Robert "Red"	Freda	10851 N 108th Dr	Sun City	AZ	85351-4042	(602) 977-5397	Openers-Toy Banks-Pencils
872	Cushman	Gary	Donna	PO Box 272	Chelsea	VT	05038-0272	(802) 685-4664 E-Mail ne.breweriana@quest-net.com	"M-1"s & "M-2"s
870	Daniel	Christian		1313 Old Lamplighter Way	Wilmington	NC	28403-3431	(910) 395-9316 E-Mail christiandan898@pol.net	Corkscrews (John Stanley)
246	Danziger	Herbert	Camille	550 Cherry Ct	Birmingham	MI	48009-1459	(248) 646-9470 E-Mail hkdcfd@aol.com	Corkscrews & Silver Top Beer Openers
5	Darocy	Alex		26 Oak Rd	Santa Cruz	CA	95060-1454	(408) 423-4199	
91	Deachman	Gary		PO Box 438	North Woodstock	NH	03262-0438	(603) 745-2347	B-1-2-3, M-1-2, NH Openers, Bottle Shaped, L-2-4-6
532	Deckert	Dale	Florence	4087 Lake Conway Woods Blvd	Orlando	FL	32812-7975	(407) 859-1543	All
817	Desrosiers	Michel		16315 Av Hebert	Saint Hyacinthe, Quebec	CANA DA	J2T-3W4	(514) 774-3200	Corkscrews (Jean Grignon)
40	Donoghue	John		171 Lewis St (C/O Lewis Street Exchange)	Lynn	MA	01902-4834	(781) 595-3499	Anything that Opens a Can or a Bottle
635	Dubrul II	Dave	Danette	88 Linden Ter	Burlington	VT	05401-4928	(802) 864-2089	Anything from Enterprise Brewery of Fall River, MA "H-8"s & "M-3"s, Cans, Mini Bottles & Pre-Pro Trays
7	Dummer	Duane	Carol	910 N Palmatory St	Horicon	WI	53032-1011	(920) 485-3395	Figural Openers, Corkscrews, All Types of Interesting Openers
663	Dutcher	Mickey	Ellie	134 Cortland-McLean Rd	Cortland	NY	13045-9803	(607) 838-3447	Iroquois Openers-Cast Iron Figural Openers (Dale Deckert)
636	Dye Jr	Ralph		PO Box 178	McConnelsville	OH	43756-0178	(740) 962-4776	Slides
763	Ellison	Dana	Catherine	PO Box 298	Ludlow	VT	05149-0298	(802) 228-3196 (301) 627-8207 E-Mail pg0028@epfl12.epflbalto.org	All Advertising Openers
738	Emme	Sandra		PO Box 1454	Upper Marlboro	MD	20773-1454		Cast Iron Figurals & Figural Corkscrews (FBOC)
823	Engelbrecht	Ken	Susan	22 Rainey Rd	Crawford	TX	76638-3317	(817) 486-2230	Advertising, Beer, or All Old Unusual or Unique Openers (Don Bull)
95	Enloe	Glen	Pattie	805 Teepee Dr	Independence	MO	64056-2146	(816) 796-9965	Cigar Box Openers & Beer Advertising Openers (Ollie Hibbeler)
828	Ennis	Roy	Rowene	HC 1 Box 297	Ford	WA	99013-9501	(509) 796-4527	Beer & Soda Openers
412	Feisel	Lyle	Dorothy	977 Powderhouse Rd	Binghamton	NY	13903-9307	(607) 723-4273	Advertsing Beer Openers
814	Ferguson	John	Denise	3305 Five Points Rd	Indianapolis	IN	46239-9574	(317) 356-3130	Indiana Breweriana
865	Fisher	John		PO Box 153	Benedict	MD	20612-0153	(301) 274-3340	Pennsylvania & Liberty Brewing Co of Tamaqua, PA (John Stanley)
849	Foraker	Michael	Beth	3820 Old Capitol Tri	Wilmington	DE	19808-5834	(302) 993-0408	Bottle Openers (Cymba/WWW)

Mem#	Last Name	First Name	Spouse	Street	City	State	Zip	Phone/E-Mail	Specialties/(Sponsor)
8	Ford	Jack		5351 Boyd Ave	Oakland	CA	94618-1111	(510) 655-5393	A-Types & Rainier Brewing & Hawaiian Brewing
723	Fossette	John	Mandie	2549 6th Ave	Sacramento	CA	95818-3905	(916) 456-9607	Type "A" Openers (John Stanley)
498	Fuerst	Norma	Thomas	11 Oak Valley Rd	Bloomington	IL	61704-7438	(309) 829-6192	"Schlitz" Openers
869	Fuller	Roy	Phyllis	102 Tanner Lake Rd	Hastings	MI	49058-9730	(616) 948-2146	Bottle Openers (Cymba/WWW)
379	Gach	Frank		5620 Waterloo Rd	Columbia	MD	21045-2627	(410) 465-9023	Openers, Beer Labels, Milk Bottles
604	Gausepohl	David		3488 Ridgewood Dr	Erlanger	KY	41018-2887	(606) 371-4415	All Beer Openers Especially Kentucky Micros & Midwest Breweries
333	Gauvin	Paul	Gail	24 Strawberry Ln	Manchester	CT	06040-6930	(860) 646-9722 (501) 767-6607	Connecticut Beer Openers & Maine Soda
623	Gideon	Jess	Carolyn	130 Treasure Isle Rd	Hot Springs	AR	71913-8415	(501) 767-6221	All Types of Openers
301	Gilliland	Richard	Patricia	3920 Weyburn Dr	Fort Worth	TX	76109-5036	(817) 923-5580	Texas & Iowa Openers
192	Goff	John	June	577 Brookhaven Ct	Kirkwood	MO	63122-3003	(314) 966-3211	General
624	Goode	Dick		16940 Bay St Apt 507N	Jupiter	FL	33477-1205	(561) 747-6326	Corkscrews
347	Gooden	Charlie	Linda	25101 N Watkinson Rd	Acampo	CA	95220-9733	(209) 334-6733	General
605	Gormally	Tom	Phyllis	100 Nelson Place	Westfield	NJ	07090-4035	(908) 233-8867	"C"s-"E"s-"I"-7"s
724	Goss	Janet	John	804 Phoenix Ave Trlr 4W	Helena	MT	59601-0856	(406) 442-2390 E-Mail jgoss@rcisys.net	G-9, M-1, M-3 (Bill Pattie)
401	Graff	Fil	Robbie	10111 Lincoln Way W	Saint Thomas	PA	17252-9513	(717) 369-3577	One Of A Type
348	Gregg	Eldon	Carol	1714 Henry Dr	Hays	KS	67601-2659	(785) 628-1595	Openers
256	Gregory	Bill		851 N Fair Oaks	Oak Park	IL	60302-1546	(708) 386-3340	Schoenhofen-Edelweiss
592	Grignon	Jean		47 Chemin Du Theatre CP 159	Eastman, Quebec	CANA DA	JOE-1P0	(514) 297-3740	Corkscrews & Openers
480	Gross	Donald	Christina	1241 Canon Way	Westminster	MD	21157-5762	(410) 848-6160	Figural (Flat & Full A/R/Q) Any Advertising Openers
837	Grubbs	George	Norma	286 Weeping Oak	Shreveport	LA	71106-7682	(318) 797-0128	Openers-Trays-Glasses- Lighters
643	Gruver	Tim	Tonie	129 Oakdale Dr	Zelenople	PA	16063-9309	(412) 452-0196	Old Beer Openers
10	Haarberg	Delbert	Beverly	15562 El Capitan Way	Delhi	CA	95315-9708	(209) 634-8096 (941) 385-2592 E-Mail halann@ct.net	All Types of Openers Pennsylvania Beer Openers ("E" Types Esp) (Don Bull)
666	Hall	John	Anna	2562 Hill Ct	Sebring	FL	33872-4232	(209) 723-1738	All Openers, Mainly "C"s & "E"s
625	Halverson	Keith	Anne	1528 W 21st St	Merced	CA	95340-3430	(309) 828-9252	All Types
651	Hanold	Bill	Karen	9677 N Fire Leaf Dr	Bloomington	IL	61704-5506	(920) 794-7026	Beer & Coca-Cola Openers
258	Hansen	Harvey	Jo Ann	2300 Jefferson St	Two Rivers	WI	54241-2208	(218) 727-1172	All Openers & Corkscrews, Old Beer & Pop Bottles
490	Hanson	Arthur	Marge	3028 Piedmont Ave	Duluth	MN	55811-2838	(972) 530-0400	"A" & "B" Openers, Corkscrews
606	Hanson	Ray	Pat	2817 Grand Oak Dr	Garland	TX	75044-7859	(719) 599-3378	
208	Harding	Russ	Sylvia	2665 Tamora Way	Spring Spirings	CO	80919-3570	(715) 423-8995	All Breweriana
13	Haydock	Herbert	Helen	1660 2nd Ave S	Wisconsin Rapids	WI	54494-4705	(909) 875-3786	All Openers
748	Hedges	Robert	Leticia	934 W Woodcrest St	Bloomington	CA	92316-1534		
856	Henkel	Don		2498 Tower Rd	West Brooklyn	IL	61378-1730	(815) 628-7471	(Norm Jay)
838	Hewitt	Don		404 S Terrace	Wichita	KS	67218-9999	(316) 683-4228	xxxx

Mem#	Last Name	First Name	Spouse	Street	City	State	Zip	Phone/E-Mail	Specialties/(Sponsor)
149	Hibbeler	Ollie	Shirley	298 Highline Dr	Lake Ozark	MO	65049-8924	(573) 365-3875	P-1 Corkscrews / Missouri / One-Of-A-Kind / Ginger Ale
629	Himes	Al		1125 E Sandusky St	Findlay	OH	45840-6477		
725	Hoesch	Kenny	Ruby	PO Box 299	Zeeland	MI	49464-0299	(616) 772-1683	Cigar Box Openers (Mike Schwimmer)
261	Hoffman	Ben	Cornelia	213 Simmons Rd	Perkiomenville	PA	18074-9587	(610) 287-8243	Pennsylvania & East Coast Openers & Corkscrews
760	Hoffman	David	Jami	929 W Broad St	Williamstown	PA	17098-9501	(717) 647-7106	Any Beer Openers I Can Find (NABA)
349	Hollinger	Jim		11421 Christensen Ct	Burnsville	MN	55337-1147	(612) 895-0968	Minnesota Openers
476	Horn	Harry	Rose Mary	3113 Smoky Ct	Sacramento	CA	95826-4147	(916) 362-3590	Openers Calif.
577	Horstmeyer	A L "Buzz"	Lucille	94 Via La Cumbre	San Rafael	CA	94904-1345	(415) 461-1098	Metal Openers
774	Hubers	Harley	Cindy	27472 376th Ave	Harrison	SD	57344-5000	(605) 243-2260	Any Kind of Openers (Anita Gold)
512	Hufford	Terry	Jan	7147 Parkview Ave	Falls Church	VA	22042-1615	(703) 573-1621	General Beer Advertising Openers
403	Hupp	Jim	Anita	6949 Hyde Park Dr	San Diego	CA	92119-2208	(619) 460-6478	Beer / Soft Drinks / Hotels / General (States & World)
806	Hurwitz	Edward	Margie	426 Howard St	Northboro	MA	01532-1031	(508) 393-9821	Figural/Whimsical Openers
702	Jacks	Eugene	Doris	29097 Netherton Rd	Newman	CA	95360-9615	(209) 862-2000	Openers of All Kinds
853	Jacobsmeier	Ed		7716 Dunbarton Ave	Los Angeles	CA	90045-1030		(Bob Heileman)
110	Jantos	Carl	Ruth	7025 Kevin Dr	Bethel Park	PA	15102-3913	(412) 833-4866	Western PA Openers
538	Jarrell	Roger	Janice	1500 Sedwick Rd	Durham	NC	27713-2626	(919) 544-7787	West Virginia, Texas, & Southern Openers & Corkscrews
700	Jarrell	Taylor		1500 Sedwick Rd	Durham	NC	27713-2626	(919) 544-7787	West Virginia, Texas, & Southern Openers & Corkscrews (Roger Jarrell)
181	Jay	Norm	Judy	839 James Ct	Wheaton	IL	60187-6344	(630) 690-1565	All Openers & Corkscrews
213	Johnson	Arthur	Eileen	200 Elmwood Ln	Naples	FL	34112-3202	(941) 775-6123	"M-3" "Slide-Out" Openers & "M-73" "Slide-Out" Opener/Corkscrews, C-1s & C-2s
660	Johnson	Tom	Betty	922 Bailey St	Jackson	MN	56143-1638	(507) 847-2828	Bottle - Can - Jar Openers (have 5000)
520	Jones	Odis	Janet	2946 W 7 St	Jacksonville	FL	32254-1908	(904) 695-0643	All Kinds
864	Joseph	Jon	Joanne	1196 Rostraver Rd	Belle Vernon	PA	15012-9802	(724) 929-7723	All Types of Openers
860	Jung	Paul		PO Box 425	Bechtelsville	PA	19505-0425	(610) 367-0239	M-2 Lithographed Openers (Ben Hoffman)
11	Kaye	Ed	Eileen	7077 Cedarhurst Dr	Fort Myers	FL	33919-6703	(941) 590-3068	Type "A-9" Openers (Baseball Players), Beer & Non-Beer
321	Keown	Vic	Mary Ann	10547 Mert St	Saint Ann	MO	63074-3433	(314) 428-6343	"M-3"s (Beer & Non-Beer)
539	Kimmons	Mike	Jan	3801 Elledge Dr	Roeland Park	KS	66205-1353	(913) 236-5441	Kansas City Pre-Pro Breweriana, Esp Openers
727	King	Charles	Karen	32 Amsterdam Ave	Glenmont	NY	12077-3630	(518) 767-2005	Albany, Troy, Schenectady, Cohoes, Amsterdam, Hudson, NY Breweries (Bull Auction)
627	King	Dennis	Laura	PO Box 1141	Lake Placid	NY	12946-1141	(518) 523-2762	
267	Kirkpatrick	Charles	Janice	295 Leyden St	Denver	CO	80220-5951	(303) 298-9625	Corkscrews
382	Klaassen	Kenneth		2412 E T Ave	Kalamazoo	MI	49002-7538	(616) 323-3192	Corkscrews

Mem#	Last Name	First Name	Spouse	Street	City	State	Zip	Phone/E-Mail	Specialties/(Sponsor)
703	Knapp	Joe		211-A Berbro Ave	Upper Darby	PA	19082-2014	(610) 352-5055	Pennsylvania Beer Openers (ABA)
269	Koch	Bob	Mickey	1510 Ariana St Lot 450	Lakeland	FL	33803-6930	(941) 682-8145	General - Just a Little of Everything
113	Kogut	Harold	Dorothy	5623 80 St N #205	Saint Petersburg	FL	33709-5889	(813) 548-6108	Bottle & Can Openers & Corkscrews
753	Kopp	Richard	Martha	14419 Woodcrest Dr	Rockville	MD	20853-2336	(301) 460-4272	Beer Advertising Including Openers
721	Kost	Tony		4027 N LeClaire Ave	Chicago	IL	60641-1435	(773) 736-2746	All Beer Openers (Esp. Chicago) (Larry Biehl)
493	Kovarik	Lou	Rosemary	12646 Alswell Ln	Saint Louis	MO	63128-2509	(314) 842-2446	Openers & Corkscrews
371	Kraft	Frank	Judy	1021 E Mulberry St	Mankato	MN	56001-4707	(507) 388-6042	Minnesota Openers
433	Kroll	Victor	Jackie	3451 Nighthawk Ct # 433	Punta Gorda	FL	33950-6675	(941) 575-0303	Wisconsin Brewery Openers & Corkscrews
514	Kutska	John	Paulette	4334 Du Bois Blvd	Brookfield	IL	60513-2222	(708) 485-1961	Types "A", "B", "F", Misc. Items Made by Opener Manufacturers
216	Landino	Arthur		88 Centerbrook Rd	Hamden	CT	06518-3400	(203) 281-1085	New England Openers
494	Lange	Dick	Elaine	307 Jefferson Dr	Mount Shasta	CA	96067-9480	(530) 926-3684	General
271	Laraway	Bill	Diane	627 Kenwood Ave	Delmar	NY	12054-1607	(518) 439-2739	Albany, Schenectady & Troy NY Breweries & Figurals
759	Larson	Don	Jackie	213 N Campbell Ave	Beloit	KS	67420-2427	(913) 738-3197	Beer & Pop Openers, Beer Trays (Don Bull)
804	Lendy	David		1296 Seabury Cir	Carol Stream	IL	60188-6027	(630) 289-5692	US Beer Openers-Non-Plastic (Larry Biehl)
383	Levesque	Roger	Christine	PO Box 826	South Windsor	CT	06074-0826	(203) 644-9582	Micro Openers
435	Lewis	Sam	Carol	113 Rockwood Dr	Pittsburgh	PA	15238-2333	(412) 963-0827	Cigar Box Openers
809	Little	Jack	Helena	9531 W Sandstone Dr	Sun City	AZ	85351-2054	(602) 974-5353	Railroads, Hotels, Motels, Inns (Anita Gold)
384	Lorett	Mike	Bobbie	PO Box 28	Conifer	CO	80433-0028	(303) 838-4292	Corkscrews
62	Lothridge	Thomas		31 Pearl St	Bainbridge	NY	13733-1027	(607) 967-8575	All Openers and Corkscrews
743	Love	George	Martha	4301 Forest Plaza Dr	Hixson	TN	37343-5017	(423) 877-6006	Tennessee Openers (NABA Norm Jay)
218	Love	Jack	Dorothy	3303 Memorial Dr S	Elwood	IN	46036-8323	(765) 552-2369	Openers-Letter Openers-Cigarette Lighters-Miniature Racing Cars
752	Loy	Greg	Karen	316 Lynwood Ave	Ottumwa	IA	52501-4938	(515) 682-6779	Openers, Iowa Openers, Beer Advertising (Ed Kaye)
449	Luchsinger	Paul	Anne	1126 Wishart Pl	Hermitage	PA	16148-4410	(412) 346-2331 E-Mail ppl@infonline.net	Corkscrews-Early U. S. Patents
274	Lyons	Tom	Janet	321 Valley Court Rd	Lutherville	MD	21093-6413	(410) 296-0387	Type "R"-Figurals
731	Mackler	Larry		1826 E Melrose St	Walla Walla	WA	99362-1442	(509) 525-6799	Northwest U.S. Beer Openers and "E" Types
816	Mahood	Jeff		303 W Elmwood Ave	Mechanicsburg	PA	17055-4126	(717) 766-8055	Beer & Soda Openers
275	Mandzuk	Phil		340 Morley Ave	Winnipeg, Manitoba	CANA DA	R3L 0Y5	(204) 452-1293	Canadian Breweriana, Etched Glasses, Early Advertising
819	Matney	Kent		PO Box 287	New Paris	IN	46553-0287	(219) 831-4947	Beer Bottle Openers (Cymba WWW)
677	Maxwell	H James		1050 W Blue Ridge Blvd	Kansas City	MO	64145-1216	(816) 942-6300	Kansas City, MO Brewery Items (Norm Jay)
629	Mayberry	A A	Lucy	1615 16th St	Auburn	NE	68305-1724	(402) 274-4448	

Mem#	Last Name	First Name	Spouse	Street	City	State	Zip	Phone/E-Mail	Specialties/(Sponsor)
796	Mayer	George	Terry	10 Library St	Lily Dale	NY	14752-1145		Beer Openers, Beer Cans, Beer Bottles, Beer Coasters
686	McDermid	Don	Tammy	716 Kentucky St	Deer Lodge	MT	59722-1936	(406) 846-2660	Montana Openers & Corkscrews (Don Bull)
153	McKienzie	Elvira		6360 S Jellison St	Littleton	CO	80123-3174	(303) 979-0987	
812	McLellan	Gerry		4811 Washington St	West Roxbury	MA	02132-2114		All Openers
712	McNary	Robert		14 Apple Tree Ln	Naples	FL	34112-7203	(941) 774-0472	All Types of Beer Openers plus Iroquois Openers
850	McShane	Matthew		2121 Kirkwood Blvd	Davenport	IA	52803-3834	(319) 323-3057	"C" "E" "G" "I" "J"
655	Milano	Hale	Linda	506 Spring House Rd	Camp Hill	PA	17011-1454	(717) 737-5067	"I-7"s (Beer & Non-Beer) and Anything from the Leo Ebert Brewery of Ironton, Ohio (Ed Kaye)
668	Miller	Darwin	Otistian	688 Broad Ave S	Naples	FL	34112-4996		All Bottle & Can Openers
861	Miller	Robert		2946 S 16th St	Milwaukee	WI	53215-3723	(414) 384-7837	Beer Openers (Norm Jay)
782	Miller	Scott	Marilyn	2136 Crosscreek Ave	Simi Valley	CA	93063-5000	(805) 583-2856	California Openers (Don Bull)
826	Minges IV	John	Sarah	3304 Grey Fox Trl	Greenville	NC	27858-8493	(919) 756-4303	Pepsi Smalls, US Coins, Silver Bullion (Pepsi-Cola Club)
732	Mlady	John	Jackie	1506 S 25th St	Omaha	NE	68105-2611	(402) 345-7909	Nebraska Openers, Corkscrews & Breweriana (1995 JFO Convention)
854	Moe	Jack	Cathy	240 Mars St N	Cosmos	MN	56228-9616	(320) 877-7301	Beer-Pop
840	Moldrem	Barney	Leslie	320 Highland Ave	Syracuse	NY	13203-1608	(315) 428-8256	"I" Type Openers/NY State/Minn/Wis (Paul Szwajkos)
834	Morean	Dan	Mary Pat Hagan	36 West St	Malden	MA	02148-5333	(617) 322-3725	Brewery Memorabilia including Openers & Corkscrews (Ed Kaye)
735	Morrison	Bruce	Julie	335 Gallihar Ln	Greeneville	TN	37743-3409	(615) 639-0897	(John Stanley)
562	Mosrie	Fred		12710 Epping Ter	Silver Spring	MD	20906-3866	(301) 929-0870	Coca-Cola Openers (John Stanley)
450	Moter	Lawrence		10149 Michaels Rd	Woodford	VA	22580-2500	(804) 448-3928	All "E"s (Except E-5s & 20s), "F-5"s, "F-6"s, "F-9"s, "F-18"s, "F-27"s
279	Muma	William	Sherron	9530 Swanbrook Ct	Elk Grove	CA	95758-1305	(916) 684-0170	
867	Musick	Don		119 Green Acres Rd	Clovis	NM	88101-8434	(505) 799-4929	Any Opener or Corkscrew, also Old Pens & Pencils
685	Nash	Abby		172 Bush Ln	Ithaca	NY	14850-1008	(607) 266-0690	Bakelite Openers, Bakelite Everything Else! (Mickey Dutcher)
581	Neas	Paul	Alma	4953 Vera Cruz Rd	Center Valley	PA	18034-9734	(610) 797-5759	All Openers
611	Newmark	Michael	Gayle	549 Buxton Ave	West Hempstead	NY	11552-2832	(516) 485-0509	Openers-Beer Only-Glasses & Cans
742	Newsome	L J		PO Box 14231	Phoenix	AZ	85063-4231		Dairy Openers & Cigar Box Openers
764	Nichol	Bob	Michelle	3536 Bradway Blvd	Bloomfield Hills	MI	48301-2408	(248) 723-6959 W(248)813-2955 F(248)813-2952 E-Mail rnichol01@aol.com	Corkscrews (Don Bull)
855	Nichols	Jim	Cindy	3178 Plantation Cv	Memphis	TN	38119-8910	(901) 753-1518	Corkscrews & Wine Memorabilia

Mem#	Last Name	First Name	Spouse	Street	City	State	Zip	Phone/E-Mail	Specialties/(Sponsor)
746	Offchirik	Robert		504 Florida Pky	Kissimmee	FL	34743-7510	(407) 348-7254	Openers-Corkscrews-Knives (Country Collectibles)
791	O'Leary	Fred	Sue	6149 Shadygrove Dr	Cupertino	CA	95014-4645	(408) 996-3101	Corkscrews (Don Bull)
741	Olson	Floyd	Dale Louise	18226 182nd St	Tonganoxie	KS	66086-5143	(913) 724-3020	Acetylene Tank Wrenches
223	Orth	Dennis		4210 S Lake Five	Colgate	WI	53017-9764	(414) 628-3933	
126	Osborn	Jim	Mary Joe	320 Dobson St	Carterville	IL	62918-1549		Types: A,B,L-4 and Corkscrews, Illinois Openers (Norm Jay)
800	Ostrow	Ken		58 Cedar St	Newton	MA	02159-1113	(617) 527-4705	New England Paper Label Bottles & Breweriana Dealer (John Stanley)
477	Owen	Steve	Candy	1175 Elkins Lake	Huntsville	TX	77340-7330	(409) 295-3329	"O-5" Openers Only
719	Paczkowski	Joe	Rita	317 Medford Lakes Rd	Tabernacle	NJ	08088-9018	(609) 268-9390	Eastern Pennsylvania, NYC & New Jersey-"H-2", "H-3", "I-7", "E" & "C" Types (Tony Ricicki)
451	Paradi	Joseph	Monika	670 Meadow Wood Rd	Mississauga, Ontario	CANA DA	L5J 256	(905) 823-3754	Corkscrews, Champagne Taps, Barscrews
486	Pattie	Bill	Lyla	37050 SE 89th St	Snoqualmie	WA	98065-9786	(425) 888-2495	Montana & "One-Of-EachType"
776	Patton	John	Eileen	701 Montara Rd Spc 208	Barstow	CA	92311-5732	(760) 252-4920	"C","E","G","I","J" (Anita Gold)
726	Pearis	Gibson	Dana	315 Berry	Belton	MO	64012-1977	(816) 331-2285	Figural-Openers In General (1995 JFO Convention)
862	Pelletier	Gary		13141 Finch Way	Apple Valley	MN	55124-8056	(612) 432-3905	Beer & Soda Openers (1997 NABA Convention)
69	Peters	Roger	Bette	PO Box 952	Calexico	CA	92232-0952		Openers & Corkscrews
750	Petro Jr	Andrew	Linda	39 Smithfield Vlg	East Stroudsburg	PA	18301-9054	(717) 421-4486	All Openers Esp "Coal Region" of PA (Larry Biehl)
871	Pettina	Stephanie		1027 Farragut St	Pittsburgh	PA	15206-1743	(412) 362-5780	All Openers (Cymba/WWW)
811	Pinney	Dave	Edith Richman	1207 Ahlrich Ave	Encinitas	CA	92024-4025	(760) 753-8151	Beer & Soda Metal Openers (Ed Kaye)
754	Pitsch	Ralph	Ruby	2814 Wedemeyer St	Sheboygan	WI	53081-6738	(414) 458-2525	Beer & Novelty Openers
842	Post	Bob	Sara	4516 S Pin Oak Ct	Sioux Falls	SD	57103-4967	(605) 339-0269	Bottle Openers Only & Brewery Smalls (Larry Biehl)
831	Preacher	Hugh	Elayne	6052 Wilmington Pike # 126	Centerville	OH	45459-7006	(937) 436-2916	All Openers (Larry Biehl)
72	Pugh	Sass		PO Box 380	Miller	SD	57362-0380	(605) 853-3835	All Openers & Corkscrews (Rejoin Art Santen)
572	Queen	Harold	Ida "Boots"	1001 Centre Ave	Jim Thorpe	PA	18229-1015	(717) 325-2612	All PA Openers, "C", "M-3's", "I-7's", "Q's", "M-19's, Micro Openers, "A-21" NB
713	Quilliam	Mike	Julie	65 Maria Dr	Great Falls	MT	59404-3769	(406) 761-1953	Montana Openers
734	Ransom	John	Norma	PO Box 97	Osborn	MO	64474-0097	(816) 675-2375	Openers, Labels, Caps (1995 JFO Convention)
670	Readel	Jerry	Barbara	15622 N 57th Ave	Glendale	AZ	85306-3010	(602) 439-1788	All Types of Openers
470	Redl	Alex	Peggy	1009 Elk St	Beatrice	NE	68310-3026	(402) 223-2554	Openers From Nebraska & Ohio, Esp. Akron, OH
857	Reeder	Tom		20 E Prospect St	Hopewell	NJ	08525-2041		Northeast Regional, Cast Figural Openers (Cymba WWW)

Mem#	Last Name	First Name	Spouse	Street	City	State	Zip	Phone/E-Mail	Specialties/(Sponsor)
358	Rees	Carl	Pat	11366 N Rio Vista Rd	Pocatello	ID	83202-5315	(208) 237-2464	Beer & Soda Openers All Types
563	Reynolds	Charlie	Judy	2836 Monroe St	Falls Church	VA	22042-2007	(703) 533-1322	Figural Openers-Any I Do Not Have
695	Reynolds	Susan		2117 21st Ave S	Birmingham	AL	35223-1716	(205) 871-4348	"A"s & "B"s-Some Others-Beer or Non-Beer (Antique Gazette)
640	Ribbke	Harry	Lorna	3731 Crestview Dr	Cottage Grove	WI	53527-9533	(608) 839-5449	All Types
671	Ricicki	Tony		9 Laird Ter	Somerset	NJ	08873-5013	(732) 873-0301	"I-7"s
863	Rocchetta	Robert		1138 Rockefeller Dr	Sunnyvale	CA	94087-2011	(408) 739-5091	Anheuser-Busch (NABA)
777	Roche	John		2815 N 58th St	Scottsdale	AZ	85257-1009	(602) 949-9173	New York Openers (Robert "Red" Cross)
359	Roe	Lehr	Joan	160 Penfield St	Dundee	MI	48131-1129	(313) 529-2359 E-Mail lehr@dundee.net	Corkscrews
495	Ruckstuhl	Jon	Lorraine	1646 Treehouse Ln N	Roanoke	TX	76262-8947	(817) 337-0101	Pre-Pro Paper Label Bottles, "E" Openers, Matchbooks
843	Rutlader	James	Min	33581 Metcalf Rd	Louisburg	KS	66053-7114	(913) 377-2722	Bottle Openers (Don Bull)
158	Santen	Art	Dorothy	6126 McPherson Ave	Saint Louis	MO	63112-1104	(314) 863-6798	Anything That Opens Anything-Cappers-Corkers-Porcelain Stoppers
691	Schaefer	Ed	Kelly	366 Bassett Rd	Bay Village	OH	44140-1813	(216) 871-0449	Schaefer Beers, Koch, Jamestown, Chautauqua NY (John Stanley)
16	Schele	Jerry	Kathleen	3744 Pineview Dr	Fort Wayne	IN	46815-4724	(219) 483-6350	Different Types U.S. Openers
442	Schiffers	George		882 Huron Ave	San Francisco	CA	94112-4038		Bottle Openers
582	Schmeisser	Ray	Fran	RR 5 Box 223A	Caldwell	TX	77836-9516	(409) 272-2008	"E" Type Openers (Mainly)
508	Schmitt Jr	Conrad	Kay	406 Eastbrook Ln	O Fallon	MO	63366-1829	(314) 272-2814	Figurals & Unusual Types
688	Schuldheisz	Lawrence		851 Doss Ave	Orlando	FL	32809-5880	(407) 855-7731	Beer Advertising & Unusual
836	Schultz	Breneman	Helen	1111 Walnut St	Columbia	PA	17512-1362	(717) 684-6869	
338	Schwab	Ed		10187 Cabin Ct	Mechanicsville	VA	23116-9409	(804) 746-1924	Beer Openers-Bottle Caps (Today's Collector)
630	Schweigl	Leonard	Dolores	2350 S 23rd St Lot 1054	Manitowoc	WI	54220-6308	(920) 684-3707	
680	Schwimmer	Mike		325 E Blodgett Ave	Lake Bluff	IL	60044-2112	(847) 295-1901	Cigar Box Openers (John Stanley)
443	Sell	Bill	Althea	457 Holly Ave	Saint Paul	MN	55102-2205	(612) 227-9299	Corkscrews
175	Sherk	Lawrence		PO Box 98094 970 Queen St E	Toronto, Ontario	CANA DA	M4M 1J0	(416) 465-3386	All Canadian Beer Openers & Breweriana
18	Sherman	Don	Ruth	438 Mavis Dr	Los Angeles	CA	90065-5054	(213) 225-7870	"A" & "B" Type Openers & Corkscrews
757	Sherman	Scott	Cindy	W5268 Quarry Rd	Appleton	WI	54915-8330	(920) 954-1168	Metal Beer Advertising Openers
499	Shoulter	Jim		9 Shawnee Woods Rd	Wheeling	WV	26003-1746	(304) 277-4361	Glasses-Mugs-Steins-Signs-Trays (Rejoin Norm Jay)
672	Skelton	Allan	Karen	1055 86th Ave W	Duluth	MN	55808-1414	(218) 626-2480 (908) 730-0931 E-Mail irwin@postoffice.ptd.net	Type "A" "B" "C" Openers (Tom Bates)
832	Skiba	Scott		156 Overlook Dr	Clinton	NJ	08809		Figurals, Corkscrew Figurals, Bottle-Caps (Cymba WWW)

Mem#	Last Name	First Name	Spouse	Street	City	State	Zip	Phone/E-Mail	Specialties/(Sponsor)
410	Smith	Henry	Linda	5459 Woodhaven Dr	Cincinnati	OH	45248-5113	(513) 451-2641	Cincinnati & Hamilton OH, Covington & Newport KY, All Breweriana
678	Sommer	Robert	Janet	413 Scott Dr	Silver Spring	MD	20904-1065	(301) 384-5456	Drink, Hotel, Beer Advertising Can & Bottle Openers (Today's Collector)
868	Sorrel	Glen	Deanna	10605 Saber Creek Cv	Austin	TX	78759-6812	(512) 483-9492	Key Shaped Openers (Cymba/WWW)
790	Staebell	Michael	Harriet	650 Knapp Rd	Akron	NY	14001-9206	(716) 542-2577	Figural & Iroquois
176	Stahly	Bob	Marge	1508 E Bridge St	Streator	IL	61364-3114	(815) 672-4323	Wall Mounts
755	Staley	Tom		PO Box 713	Micanopy	FL	32667-0713	(904) 466-3801	Corkscrews-General (Don Bull)
339	Stanley	John	Pat	3712 Sunningdale Way (Mailing PO Box 64 Chapel Hill NC 27514)	Durham	NC	27707-5684	(919) 419-1546 E-Mail jfo@mindspring.com or prjrs@email.adp.unc.edu	"A" & "B" Types, Southern US, Hoster-Columbus, & Fink Openers & Corkscrews
184	Stawarz	Henry	Marge	RR 2 Box 131	Rushville	IL	62681-9637	(217) 322-6834	Beer & Soda Openers All Types
839	Steffens	Fred		2410 Cleveland Rd	Sebring	FL	33870-1565		(John Hall)
667	Steinke	Tom	Sharon	155 S Charles St	Waukesha	WI	53186-6201	(414) 542-0252	All Openers (Norm Jay)
617	Stork	Jim	Ruth	7504 Parliament Ct	West Chester	OH	45069-2325	(513) 755-8670	Ohio & Figurals & Advertising
873	Stroble	Al	Karen	502 E Hawley	Mundelein	IL	60060-2494	(847) 566-1131	All Openers (Don Bull)
375	Summers	Stan	Pat	5880 N Livernois Rd	Rochester	MI	48306-2538	(810) 651-6886	Michigan Stuff
661	Sutton	Lewis "Lou"	Rita	PO Box 1112	Mechanicsville	VA	23111-6112	(804) 730-0449	Virginia Openers
769	Swanstone Jr	Donaid	Julie	RID Box 1D 601 Main St	Dearborn	MO	64439-9111	(816) 992-8819	Corkscrews (1995 JFO Convention)
848	Szrek	Walter		60 Spencer Ave	East Greenwich	RI	02818-4010	(401) 382-7886	(Cymba/WWW)
708	Szwajkos	Paul	Mary	4008 Arrowhead Ln	Liverpool	NY	13090-2822	(315) 652-7933	New York State (John Horn)
626	Teggatz	Bonnie		100 1st Ave NE Apt 704	Cedar Rapids	IA	52401-1119	(319) 368-8348	Kitchen Openers
515	Tewksbury	Ralph	Linda	84 Wildwood Dr	Parkersburg	WV	26101-9771	(304) 863-3627	Beer Openers (Art Santen)
363	Thompson	Thom	Frances	123 Shaw Ave	Versailles	KY	40383-1157	(606) 873-8787 (606) 255-2727 (864) 225-1588 E-Mail ernie.thoms@atlanata.ncr.com	Coca-Cola & Lexington, KY Brewery-Dixie Beer Openers & Mfg Literature
852	Thoms	Ernst	Jeanette	206 Windemere Way	Anderson	SC	29625-5267		Openers-All
789	Tozer	L V	Sylvia	1290 SE 8th Ave	Oak Harbor	WA	98277-4050	(360) 675-4575	Beer Openers (Cymba WWW)
785	Vandemark	Bud	Betty	3830 Cambria-Gomer	Elida	OH	45807-9792	(419) 642-3281	All Advertising Openers
851	Veley	Gordon	Melinda	921 Snyder Hill Rd	Ithaca	NY	14850-8701	(607) 539-6994	Beer Openers & Tap Handles
500	Vifquain	Brad	Lori	PO Box 30244	Mesa	AZ	85275-0244	(602) 807-3609	Everything
632	Virostek	Donald		3746 Margate Rd	Pittsburgh	PA	15221-3914	(412) 241-5894	"M-3"s & Tire Ashtrays
547	Vlossak	John	Dot	1044 E Eldorado St	Appleton	WI	54911-5568	(920) 739-2789	Williamsons (Esp Wire Corkscrew)-Walkers-American Patents
162	Vollrath	Verne	Laverne	218 S Lexington Dr	Janesville	WI	53545-4322	(608) 752-5708	U.S. Beer-Malt-Hop Openers
858	Voltz	Donald	Kathleen	15738 Ridge Park Dr	Houston	TX	77095-2647	(281) 463-4709	Bottles, Cans, Glasses, Tapper, Signs & Microbreweries (Larry Biehl)

Mem#	Last Name	First Name	Spouse	Street	City	State	Zip	Phone/E-Mail	Specialties/(Sponsor)
227	Wagner	Paul	Stella	944 Hale St	Pottstown	PA	19464-4034	(610) 326-5419	PA Beer & Soda Openers & One-Of-Each-Type
228	Waldo	Harriet		27152 Potato Sack Rd	Rocky Mount	MO	65072-9054	(573) 392-3186	"H"s and "D"s
559	Walker	Don	Marcia	2294 Terrace Dr N	Clearwater	FL	34625-2743	(813) 799-4253	Beer Knives, Beer Corkscrews, Beer Flat Figurals
364	Watkevich	Frank		306 Cottage St	Athol	MA	01331-2950	(508) 249-9409	Bottle Openers
820	Weatherhead	John	Illona	5224 S Guerin Pass	New Berlin	WI	53151-8139	(414) 425-8810	"L-1s" "L-4s" "H-8s" (Norm Jay)
728	Westall	Jack	Wanda	5945 Shallow Creek Dr	Milford	OH	45150-1524	(513) 248-1127	All Beer Opener Types (Except Wall) (Robert "Red" Cross)
684	Westland II	Deane	Kristi	1612 S 13th Ave	Saint Charles	IL	60174-4504	(630) 513-6090	Neons-Bottles-Openers-Chicago Breweries (Fil Graff)
583	Whelan	Don	Cora	1200 W Maple St	Savannah	MO	64485-1857	(816) 324-3603	Schlitz, Types, Missouri Breweries
618	White	Herb	Polly	3216 Jamaica Blvd S	Lake Havasu City	AZ	86406-6207	(520) 680-7762	"E-11" & "E-14"
296	Wilcox	Darwin	Ellen	8495 Croix Trl	Roscoe	IL	61073-9158	(815) 623-2255	Advertising Openers
488	Williams	Don	Diane	1022 Diablo Rd	Danville	CA	94526-1924	(510) 831-1783	General Breweriana
365	Williams	Scott	Ursula	11601 Tissel Hollow Rd	Fairfax	IA	52228-9789	(319) 846-2919	Types "A", "B", "I-7", "I-17", "B-24", Wooden Handle Corkscrews, Iowa Beer Openers
510	Willing	Kenneth	Betty	3841 W Bass Creek Rd	Beloit	WI	53511-9022	(608) 752-1387	Wisconsin Openers & Trays
326	Wisconsin State	Historical Society		816 State St	Madison	WI	53706-1488		
676	Witulski	Barney	Ruth	224 W Westplains Rd	Gretna	NE	68028-4408	(402) 332-3764	All Beer Openers
143	Wulff	Rod		623 Fern Way	Eldersburg	MD	21784-8516	(410) 795-0771	
830	Yates	Paul		110 N Main	Mount Blanchard	OH	45867	(419) 694-2721	Coins-Morgan Dollars
314	Young	Joe	Jackie	36 S Weston Ave	Elgin	IL	60123-6036	(847) 695-0108	Corkscrews & Tin Can Openers
342	Zanghi	Tony	Cathy	2225 Deer Trail Rd	Coopersburg	PA	18036-9069	(610) 346-8232 E-Mail atz0@ms1.allencol.edu	Collect Pennsylvania Small Towns: A & B Type Openers, Blob Top "Squat" Bottles, and Beer Labels (Pre-Pro and IRTF)
525	Ziegler	Terry		698 Huffs Church Rd	Alburtis	PA	18011-2226	(610) 845-7102	All Types of Bottle Openers

San Francisco

Here We Come

JUST FOR OPENERS

20TH ANNUAL CONVENTION REGISTRATION
APRIL 22-26, 1998

HOTEL CALIFORNIAN

405 Taylor St
San Francisco, CA 94102

Please Make Hotel Reservation with John Stanley (See Page 1)

(Rate is \$80.00/Single/Double \$90.00/Triple/Quad) (No Charge for Children under 12)
(Motel has 17 Floors and Guaranteed Reservation must be made 1 month prior to Convention)

MAKE **SAN FRANCISCO** YOUR NEXT STOP ON THE JFO CONVENTION TRAIL.

MEMBER REGISTRATION FEE - **\$40.00**
(INCLUDES HOSPITALITY ROOM, CONVENTION OPENER & ONE SHOW TABLE)

NAME _____

ADDRESS _____

CITY _____ STATE (PROVINCE) _____ ZIP _____

EVENING PHONE NUMBER _____

DATE YOU WILL ARRIVE _____ APPROXIMATE TIME _____

DATE YOU WILL LEAVE _____ (NEED TO KNOW FOR PLANNING PURPOSES)

HOW WILL YOU ARRIVE? CAR _____ PLANE _____ TRAIN _____ OTHER _____

NAME(S) FOR CONVENTION BADGE: _____

Do You Want to go on the Anchor Steam Brewery Tour? _____

Each Member is allowed one guest on the tour, will you be bringing a guest? _____

MAKE CHECKS PAYABLE TO YOUR CONVENTION HOST (John Cartwright) FOR 1998

John Cartwright
950 Marlene St Apt B
Ukiah, CA 95482-7446
PHONE (707) 463-0955

***** BRING A DISPLAY !!! *****