

JUST FOR OPENERS

701-E AUDUBON LAKE DR. DURHAM, NC 27713 919-361-0120

Welcome to the 1994 January **Just For Openers** newsletter. This 61st edition brings new changes. Art Santen has retired as editor and I have volunteered to take over the duties. Please direct any comments to me at the above address.

Belated Merry Christmas and Happy New Year to all members. The last few months have been very hectic. Besides turning "40" and taking over duties as editor of **JFO**, Pat (my wife) and I have sold our townhouse and are having a new home built. To accomplish this we had to move to an apartment for 4 to 5 months depending on how long the builder takes to complete the new house. Please note our new **temporary address** is:

**Just For Openers
John Stanley
701-E Audubon Lake Dr.
Durham, NC 27713
(919) 361-0120**

Hopefully in the April issue I will have our new permanent address and phone number. Members who send me mail at my old address will see about a one week delay before I get their mail.

DEDICATION

As our annual convention draws near, we are all anxious to see what new pieces are up for trade/sale. But most of all, we look forward to seeing old and new friends, finding everyone well and happy.

If someone can't come due to their own illness, or their spouse is home sick, there is a genuine concern. If a loss has been suffered, everyone offers their caring support.

This April, we will meet in the home state of someone who was very active in "Just for Openers". He was an important part of the network supporting me the two years the convention was held in Durham, N.C. Our friendship continued as he hosted the convention in Ohio the next year.

Tom Zruno will certainly be in our thoughts in April 1994. We will all reminisce with some "Zruno" tales when we meet again, still not believing he has passed away. But for now I would like to dedicate my first newsletter to our Western Pennsylvania friend, Tom Zruno. May the outcome of our many phone calls discussing the Newsletter and the Handbook that is about to be published be worthy of this dedication.

ABOUT YOUR EDITOR

Now let me give you a brief background about myself. I started collecting openers in 1977. My mother brought home a board of 'E' type soda openers. From that modest beginning, I started going to flea markets and expanded into openers and corkscrews of all types, specializing in beer advertising openers. I did not find out about **Just For Openers** until 1982. A vendor at a flea market told me about Don Bull but only knew he lived in Trumbull, Ct. A letter was sent to him with no street or zip address and luckily he received it. Don sent me membership information and I joined shortly thereafter.

For a new member the information and knowing that so many other people collected openers was really mind boggling. My first convention was in 1986 at Fort Meyers, Fl, hosted by Ed Kaye. It was the first time other collectors had a chance to buy and trade for openers from my collection. A lot of transactions were made and like most collectors, I let some really good openers and corkscrews get away. Attending the 1986 convention really whetted my appetite and I have not missed a convention since. A convention is definitely the best place to pick up openers and corkscrews. The fellowship is outstanding and all attendees have a great time.

My collection stays around 1000 openers and like many members I concentrate on the 'A' and 'B' types. This past year most of my time has been spent redoing "The Handbook of Beer Advertising Openers". This project is near completion. An order form can be found on the last page.

The following three and a half pages show some of my favorite openers from my collection. My main concentration is on Southern US beer openers, Hoster-Schlee-Columbus beer openers, and trying to get one beer opener of each type. I have a few corkscrews but I am mostly interested in the flat figural and flat key shaped openers (types "A" and "B"). My collection contains approximately 200 "A" types, 250 "B" types, 300 "C" thru "Z" types, and 250 "Non-Beer" openers.



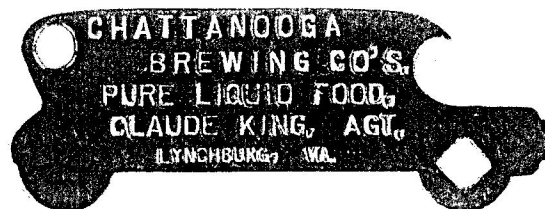
A-41-1



A-19-2 (Front/Back)



A-9-3



A-13-10



A-42-15



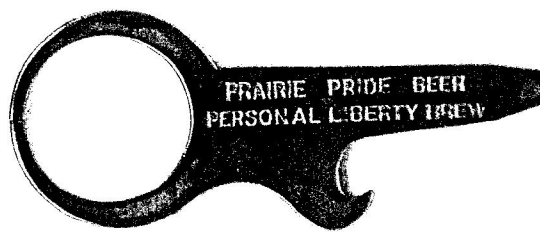
A-34-4



A-16-5



A-43-4



B-6-21 (Front/Back)



B-9-8 (Front/Back)



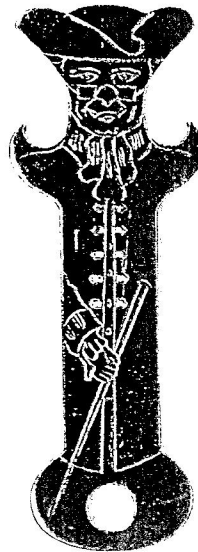
B-9-4



A-29-27



C-1-7



A-8-1



C-2-4



A-53-3



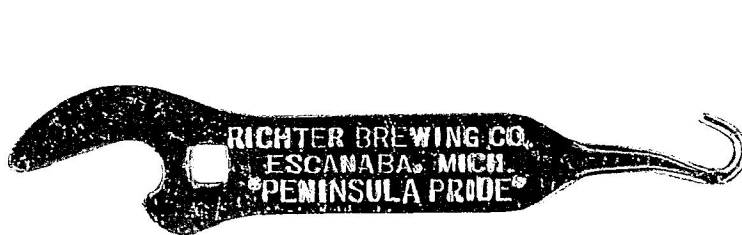
A-53-1



B-7-7



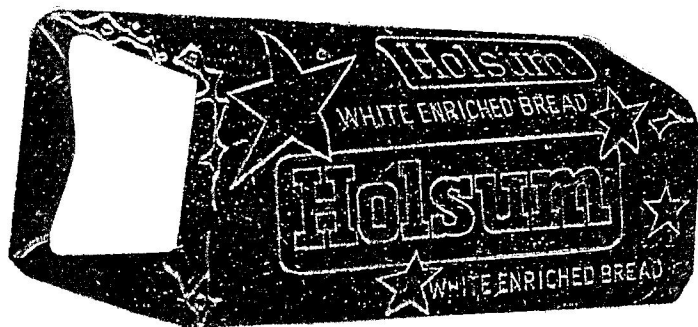
B-46-1



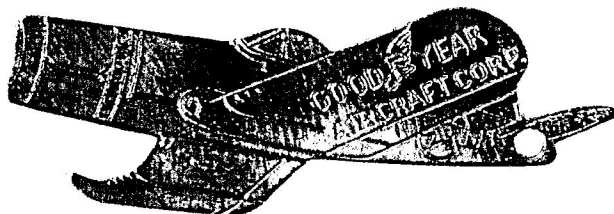
B-53-2



B-44-1



A-Type "Loaf of Holsum Bread"



A-Type "Goodyear Airplane"



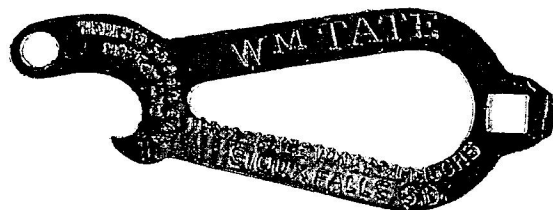
A-Type "Pipe" "Moonshine Tobacco"



A-Type "Pipe" "Pipe Cleaner"



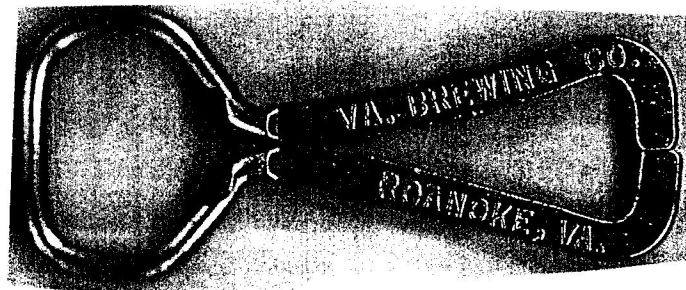
A-31 "Seal"



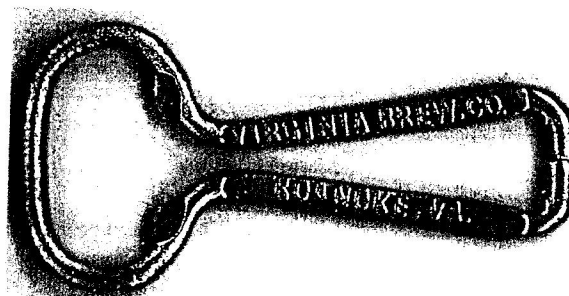
B-Type (What For ?)



N-Type "Watch Fob" "Chero-Cola"



E-7-45



E-26-1

ANNUAL CONVENTION-READING, PA

The annual convention is almost at hand. The 1994 convention will be in Reading, PA (The Inn at Reading) and hosted by Ben Hoffman. Dates are April 28-30. A brewery tour to Yuengling's and the Rennigar's Antique Extravaganza are slated events in addition to the Friday auction and Saturday show open to the public. If you don't know, Pennsylvania is "Antique Country". Plan to come early and stay late. Contact Ben Hoffman, 213 Simmons Road, Perkionmenville, PA, 18074, (215) 287-8243.

Convention flyer, member registration form, and hotel registration are included with this issue.

"CORRECTIONS", NEW "ADDITIONS" & NEW "DISCOVERIES"

Please send any corrections, new additions or new discoveries to the editor, John Stanley. When sending in new additions if possible try to send in xerox copies of the additions (front and back). This greatly helps in catching mistakes and verifying the opener type. For new discoveries a good photograph or drawing is best, but xeroxing is fine if that is the only means you have. When xeroxing it is usually best to set the machine on its lightest setting.

MEMBER'S UPDATE

Member's Update section will hopefully be a way of letting everyone know about the condition of members who are not doing well or who have passed away. Members not doing well would certainly like to receive a card or call wishing them well.

Larry Biehl: Larry has been receiving Chemo treatments for his bladder. He is doing fine. The past couple of months has seen him and his wife Fran spending much time with their volunteer jobs. One of the jobs is managing a food kitchen for the poor. Contact Larry at 448 Crandon, Calumet City, IL, 60409, (708) 891-4269

Bill McKenzie: Bill underwent a Bone Marrow Transplant in May at Omaha, Nebraska for Leukemia. He is steadily improving and getting better each day. In December Bill went back to Omaha for a checkup. He received a good report. After Omaha Bill traveled to Wisconsin to watch his daughter play in the Women's NCAA Volleyball Final Four Championship. His daughter is an All-American at Long Beach State. Long Beach State beat Penn State for the title. Bill said it was the best Christmas gift he could have received. Contact Bill at 6360 S. Jellison St., Littleton, CO, 80123, (303) 979-0987

Bob Van Vactor: Bob has been in the hospital twice since the convention. He was having lung problems and finally diagnosed as having a yeast infection in his lungs. He is doing much better now. Contact Bob at 614 No. Maple, Stansberry, MO, 64489, (816) 783-2245

Tom Zruno: Tom passed away in August. He was one of the first members of JFO. He really had a great collection of Western Pennsylvania breweriana including a great collection of openers. His daughter Toni Zruno-Rankin has inherited Tom's collection. She has joined JFO and intends to actively keep up Tom's collection.

"FINDING OPENERS"

It is certainly getting tougher for all us to find those elusive openers and corkscrews, but it can be done. Randy Long accumulated over 2500 different openers in about 15 months (October 1991 to December 1992). He really went after them, but unfortunately decided to sell out and concentrate in other areas of antiques (among the many things he and his wife collect are Victorian Furniture and "Pickle Castors"). The results are seven auctions, six last year and one in this issue.

Dick Britton writes that he went to one auction in Michigan this summer that had over a 1000 openers for sale. He ended up getting about 500 of them. He sent me a copy of another auction ad in Michigan for this fall. This auction also had over a 1000 openers for sale. Unfortunately Dick could not attend this auction.

Ollie Hibbeler traveled to Canada and back this past summer. His trip took him up through the Dakotas to Manitoba. He found plenty of openers and fishing lures (his other big collectible). The amazing thing is he did not find one corkscrew. Where did all of the corkscrews get to?

The first week of December Wayne Meadows (a CCCC member) paid me a visit. He was on business to the Raleigh-Durham area and had a few hours to kill waiting for his plane to leave the airport. Wayne stayed long enough to buy seven corkscrews from me. He is from Vancouver, British Columbia and travels for two weeks at a time every six weeks. His work carries him all over the United States. He goes to a lot of antique shows and flea markets. The average take on one his two week trips is 30 to 40 corkscrews. Maybe he is the guy getting all of the good corkscrews.

The bottom line is that openers and corkscrews are still out there. You have to be willing to hunt for them and many times being in the right place at the right time is the bottom line. I myself have picked up several new openers this past year through mail trades. My best finds are almost always made at conventions. With spring approaching, hit the flea markets, garage sales, and antique shows. Good luck and happy hunting.

"CAN OPENER WEEK"

Bonnie Heathman wrote telling me she had found a declaration in the newspaper for "Can Opener Week", April 30-May 8, 1954. There is no mention of the town or state and she couldn't find anything in any Iowa newspapers. Bonnie feels this may have possibly been tied to "Beer Advertising Openers" as it covers two weekends, not exactly "pork and beans". Bonnie would like to know if anyone has any information about this event. If anyone does please contact Bonnie Heathman, 4305 Cavalier St. NE, Cedar Rapids, Iowa, 52402-2119.

Also in Bonnie's letter, she added that she "really enjoyed the warmth of JFO". Bonnie attended a convention for the first time last year. Please remember the convention is a great place to meet other opener collectors. Bonnie adds that she really likes the "kitchen openers" (F-11, F-12, F-13). She is trying to get one from each state with a town and state name appearing on it.

"POTLATCH" B-11 RAINIER OPENERS

In the January 1981 JFO issue, Don Bull shows a B-11 Rainier "Potlatch" opener on page 11 with the following short description. Note the similarity between this opener and type B-11 as shown in "Beer Advertising Openers". Perhaps these Rainier openers were made with a variety of pieces attached to them. Anyone have any data on this?

In the October 1984 JFO issue, Don Bull wrote an article about the B-11 Rainier "Potlatch" opener.

On July 17, 1911 six days of excitement began on the docks in Seattle. The event had been dubbed "Golden Potlatch" by Seattle school teacher Pearl Dortt. She had read of the custom among Indians of bringing and hoarding their treasure for many years and when they had gathered a great supply they invited friends and members of their tribe to celebrate giving their treasures away. The custom was known as "Potlatch". The "Golden" was added as the six day festival was in commemoration of the arrival of the first gold ship from Alaska.

During this festival large firms occupied booths where they gave away small and useful articles publicizing or advertising their products. Seattle Brewing and Malting Company, which then produced Rainier Beer, had such a booth. Every hour on the hour they gave away a very limited number of beer bottle openers. These had a "Potlatch" bug set in enamel and embossed with gold on the handle. People stood in lines at the Seattle Brewing booth, some of them for several hours, to get one of these openers. The opener is type B-11 and is pictured below.

The Golden Potlatch festivals were subsequently held in 1912, 1913, 1914, 1934, 1938, 1939, 1940, and 1941. I do not know whether or not openers were given away at additional festivals. Andy Growe and I are fortunate in that we did not have to wait in line for our "Potlatch" openers with "Compliments of Seattle Brewing and Malting Co.". Does anyone else have one to report and if so, is the "bug" the same as that shown in the picture?

In July, 1985 Bill Ennis wrote a follow up to the above article.

I would like to add a bit of history or rumor to the Potlatch (B-11) opener. On page 11 of the Jan. 1981 issue of JFO is pictured the Rainier opener with the "standard" Potlatch symbol. That symbol was in wide use on various souvenirs (which are very collectible in the Seattle area). The B-11 shown in Don Bull's "Beer Advertising Openers" and on page 5 of Oct. 1984 JFO has a variation of the Potlatch symbol (one of three variations) pointed in the opposite direction and capped with a spire with a question mark. An explanation I got from an old antique dealer for the spire and question mark: In 1911, a proposal was made to build in Seattle the tallest building "west of the Mississippi". There was considerable doubt that it would ever be built. This was reflected on the Rainier Potlatch symbol. However, it was built in 1913 and today is still the favorite building of the majority of Seattleites despite being dwarfed by numerous other ones. The Smith Tower has a top like a Potlatch symbol. I believe that the Rainier opener was the only Potlatch symbol to use the spire and the question mark. I have a B-11 with the spire and question mark.

Originally two listings were shown for the B-11 "Potlatch" opener. Last year Bill Ennis wrote me the following letter.

There never was a B-11-1 (KEY TO RAINIER BEER). There are two distinct B-11-2's. The one shown in Don Bull's original "Beer Advertising Openers" (opener on the left below) and another in the January, 1981 JFO (opener on the right below) with identical advertising. I contend that Don Bull's opener pictures the spire of the L.C. Smith Building in Seattle and was the 1911 opener with a question mark indicating uncertainty that it would be built. It was built in 1913. The one below left is the 1911 opener and one below right is the 1913 opener. The 1913 "Potlatch" symbol is much larger and is facing in the direction opposite to the 1911 opener. The 1913 opener is much harder to find than the 1911 opener.



Due to Bill's excellent work the following listing will be shown in the new handbook.

B-11

1978 (1)
1982 (2)

1. COMPLIMENTS OF SEATTLE BREWING AND MALTING CO. / KEY TO RAINIER BEER (2 VAR
(A) POINTED POTLATCH SYMBOL W/ QUESTION MARK (FACING KEY CHAIN HOLE) (B)
SQUARED-OFF POTLATCH SYMBOL W/ NO QUESTION MARK (FACING OPENER END))

B-11 CORRECTIONS

1. COMPLIMENTS OF SEATTLE BREWING AND MALTING CO. / KEY TO RAINIER BEER
2. RAINIER (DELETE USE #1)

(Please remember there is no charge for Ads)

WANTED

Corkscrews, Beer Advertising Letter Openers, Beer Advertising Knives, and Postcards depicting Corkscrews. Please send description, photo, sketch, photocopy, or tracing of what you have and advise price wanted. Don Bull, 20 Fairway Drive, Stamford, CT, 06903, (203) 968-1925

A-9 Baseball Players. Need **A-9-8 Eureka, A-9-21 Amber, A-9-26 Penn, A-9-30 Bethlehem, A-9-31 Detroit, A-9-33 Rainier, A-9-37 Butte, and A-9-38 Eagle.** Ed Kaye, 1478 Albatross Rd., Sanibel Island, FL, 33957, (813) 472-0004

I have an **A-34-5 Reading Beer** and an **A-34-4 Gold Top**, each almost mint, for trade. I want any of these; **A-11, A-14, A-22, A-33, or A-43.** Marc Benjamin, Rt-2 Box 159F, Edenton, NC, 27932, (919) 482-2099

O-5 Openers. Send for list. Top Dollar \$\$\$\$. Steve Owen, 5409 Carmel Court, Tyler, TX, 75703

New York State Openers, all styles. Will buy or trade from my non N.Y. Openers. Also send me your want lists, I might have what you need. Mark Barren, 6141 Tachi Dr., Newfane, NY, 14108-9517

Midget #127 by Vaughn. Also any of these; **A-6, A-30, M-10, M-78.** Bonnie Heathman, 4305 Cavalier St. NE, Cedar Rapids, IA, 52402

Northwest Openers (Washington, Oregon, Idaho, Montana). I just began collecting openers and I'm looking for all types. David Edgar, 12827 163rd SE, Renton, WA, 98509, (206) 227-8351

Lexington Brewery (Dixie Beer) and Coca-Cola Openers. Want to buy any figurals or unusual older examples of these. Also looking for old manufacturer's brochures or catalogs (originals or copies of). Thom Thompson, 123 Shaw Ave., Versailles, KY, 40383, (606) 873-8787

B-28 Howell & King, B-37 Dubois, and F-16 Wacker. Cash or Trade. Tony Zanghi, 2225 Deer Trail Rd., Coopersburg, PA, 18036, (610) 346-8232

"E" Type Openers. Would like to hear from anyone who has "E" type openers for sell or trade. Ray Schmeisser, Rt. 3 Box 194 E, Caldwell, TX, 77826

West Virginia Openers (B-7-12, B-18-110, and H-4-3), also Southern US Beer openers and corkscrews. Roger Jarrell, 1500 Sedwick Rd., Durham, NC, 27713, (919) 544-7787

Southern US Openers, Fink Brewing Co. Openers, Hoster-Columbus Brewing Co. Openers, A-18 & A-42 Fish Openers, nice trades available. Write for my latest trade/want list. John Stanley, 701-E Audubon Lake Dr., Durham, NC, 27713, (919) 361-0120

(Please remember there is no charge for Ads)

SELLING

Collection of 800 Openers & Corkscrews. For color pictures contact Bob Bolam, 58 Hillary Drive, Rochester, NY, 14624, (716) 889-2561

"Encyclopedia of Texas Breweries, Pre-Prohibition (1836-1918)" or "Beer Trucks, A Photographic Salute". These are nearly sold out. Mike Hennech, 2721 Stark St., Fort Worth, TX, 76112

Bottle Opener Display Case: Inserted with this issue is a yellow slip offering Bottle Display Cases. The cases fit most "A" and "B" types. I will have samples at the convention in April. If any members have these cases, please let me know what you think about them. The cases are excellent for displaying and are stackable. The owner of the company Mike Pratt joined JFO. The Collectors Choice Display Case Co., Rt. 2 Box 73, Fremont, NE, 68025, (402) 721-4765

"Beer Advertising Openers" xeroxed for \$8.00 postpaid. A xerox copy of Don Bull's first opener book. John Stanley, 701-E Audubon Lake Dr., Durham, NC, 27713, (919) 361-0120

"JFO Back Issues" xeroxed for \$40.00 postpaid. Xerox copies of all JFO back issues 1979-1993 (60 issues). John Stanley, 701-E Audubon Lake Dr., Durham, NC, 27713, (919) 361-0120

"B-63" & "B-64" OPENERS

In January 1989 "New Discoveries", two of the new types were a "B-63" and a "B-64". The "B-63" is very similar to a "B-21". The only difference is the "B-63" has a much larger key hole. The "B-64" is very similar to a "B-23" and with the only difference being that the keyhole on the "B-64" is much larger. The 1994 additions includes several new "B-63"s and "B-64"s. To avoid confusion, any "B-63" or "B-64" sent in as a new addition will also be listed in the corresponding category (either "B-21" or "B-23"). The listing for a "B-63" will be shown as a reference to the corresponding "B-21" and the listing for a "B-64" will be shown as a reference to the corresponding "B-23". Please do not pay a premium for either a "B-63" or "B-64". Even though they are recent new discoveries, they are fairly easy to obtain.

THE MISSING "H" IN PITTSBURGH

Members will find many openers from Pittsburgh, Pa. with Pittsburgh being spelled as "Pittsburg" with no "H". The following explanation was given in "Sports Illustrated". From Pittsburgh's founding in 1758 to 1890, the "H" was used. In 1890, for consistency, the U.S. Board of Geographic Names ordered all towns and cities ending in "BURGH" to remove the "H". Though the "H" in "BURGH" is silent, Pittsburgh's residents weren't, and in 1911, the "H" was officially restored, thanks to the efforts of a strong citizen's movement.

Types "E-10", "E-12" & "E-14" Opener Change

The new "94 Handbook" will contain a big change for the "E" type openers. Over the years much confusion has occurred trying to list openers in the following categories (these aren't the only categories that are confusing, but the most confusion seems to occur with these).

E-10 Two-thirds of the E-10s have been listed as E-14s.

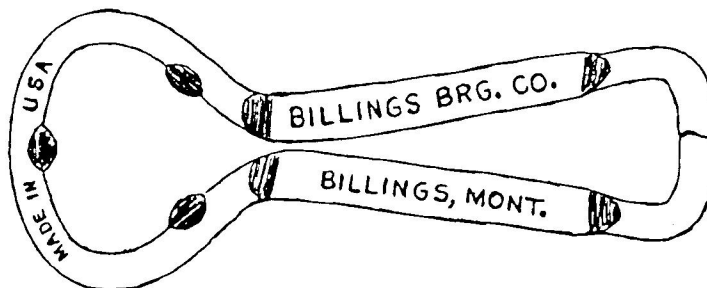
E-12 Half of the E-12s have been listed as E-14s.

In the interest of trying to make classifying these openers easier for everyone the E-10s, and the E-12s will be moved to the E-14 category. The only exceptions will be E-10 openers with 2 frets which will be moved to the E-13 category.

I know some collectors will be upset, but I believe the vast majority will find this switch much easier to understand when classifying openers that fall in these categories. Assuming the opener falls in the general E-14 style (squared or dipped top), any Post-Prohibition "E" opener will be classified as an "E-14" if the opener has 3 frets or as an "E-13" if the opener has 2 frets.

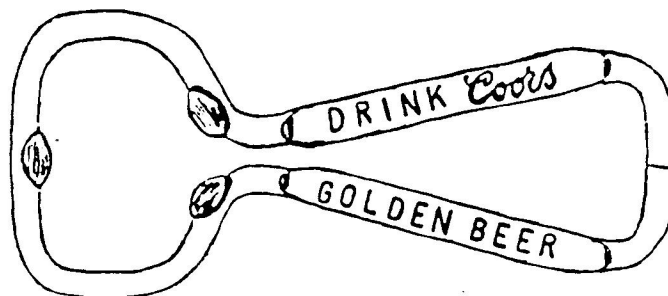
In the October 1980 JFO issue, Don Bull shows the various variations of "E" type openers. At this time the E-9-b (USA top) is listed as an E-9. The E-10 has two variations listed (3 frets and 2 frets). The E-12 has one variation and states the length is 3 3/4". The E-14 has eight variations listed.

In the July 1988 JFO issue, the Opener Trivia article on E-14s shows 10 variations. The E-9 (USA top) is shown as an E-14a variation. I asked Bill McKenzie the reason behind his doing this. His logic is the E-9 (USA top) is a Post-Prohibition opener like the other E-14s. The true E-9 ("Oriole") is a Pre-Prohibition opener. This makes good sense. In most cases when one tries to differentiate the older E-9s (Oriole) from the newer E-9s (USA top) it is pretty easy, but there are several E-9s that fall in the "grey" area. They look like an E-9 USA top but do not have USA above the top fret. Once again trying to avoid confusion the E-9 USA tops will be left as E-9s. They are really very easy to distinguish from other true E-14 types.



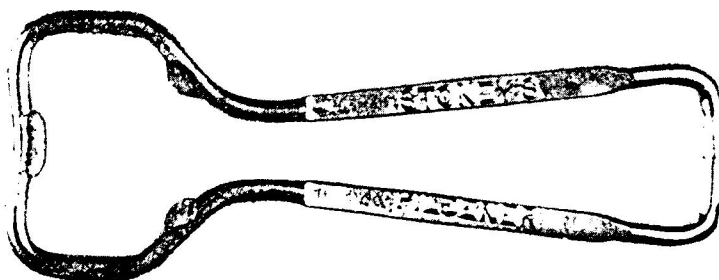
E-9-b (USA Top)

The E-10s have been the most confusing group. Even though some people use the length from the price guide (E-10 is 3 1/4" and E-14 is 3 1/2"), the main difference seems to be the wire gauge or thickness used in making the openers. The E-10 is a much thicker wire gauge than the E-14. With so many E-14 variations, it just seems a lot simpler to go ahead and list the E-10s as E-14s. The E-10s are definitely Post-Prohibition.



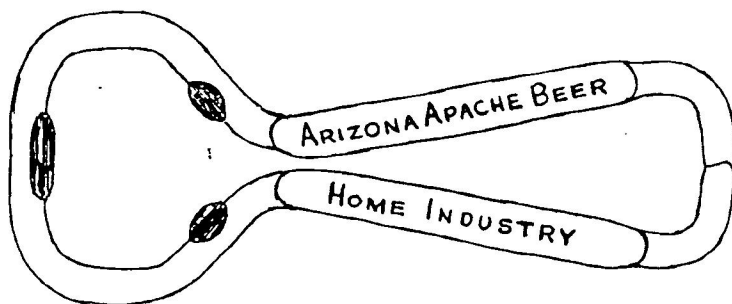
E-10 (Now E-14)

The E-12s can usually be identified fairly easily. Besides the length (3 3/4"), the wire is thinner than E-14s. Again for the sake of simplification, the E-12s which are Post-Prohibition openers will be moved to the E-14s.

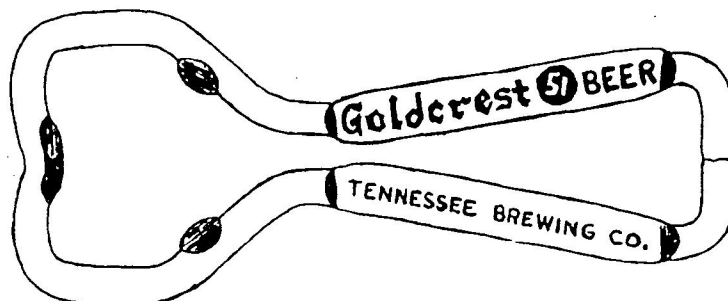


E-12 (Now E-14)

All Post-Prohibition "E" openers with the general E-14 style (squared or dipped top) will be classified in one category. If anyone has a better solution, please let me know. But, it's my opinion that the old system did not work.



E-14 (Squared Top)



E-14 (Dipped Top)

AUCTION NEWS

Enclosed with this issue you will find a copy of **Randy Long's Auction #7**. The closing date is February 7, 1994. Randy ran 6 auctions last year. Results from Randy's auctions will be shown in future issues.

Enclosed with this issue you will also find a copy of **Joe Cardone's Latest Auction**. Joe Cardone has been running monthly auctions since JFO started in 1979. He usually offers between 200 to 400 openers/corkscrews each auction. The main emphasis is on beer advertising openers. There is no charge for the auction. Anyone interested or anyone wishing for Joe to sell their collection should contact **Joe Cardone, 1833 Rosemont Blvd., Dayton, Ohio, 45420**

If you do receive Joe's auction, please try to bid on something. Joe will send you the next auction as long as you are an active bidder. If you do not bid, he will not send you the next auction.

Lynn Geyer's Advertising Auctions are offered once or twice a year. The main emphasis is on breweriana. Some openers and corkscrews are offered. For \$20.00 you receive a very nice auction catalog. Auction 17 just closed in December. Interested parties contact Lynn Geyer's Advertising Auctions, 300 Trail Ridge, Silver City, New Mexico, 88061 (505) 538-2341

If any member knows of other opener/corkscrew auction services, please let me know.

OTHER CLUBS

American Breweriana Association (ABA) offers a newsletter six times a year on breweriana collecting. Dues are \$20.00 per year. Contact Chris Galloway, Executive Director, P.O. Box 11157, Pueblo, CO, 81001

Canadian Corkscrew Collectors Club (CCCC) offers a newsletter four times a year on corkscrew collecting. Dues are \$30.00 per year. Contact Milt Becker, P.O. Box 9863, Englewood, NJ, 07631

East Coast Breweriana Association (ECBA) offers a newsletter four times a year on breweriana collecting. Dues are \$20.00 per year. Contact Eugene Fink, 2010 N. Broad Street, Lansdale, PA, 19446

National Association Breweriana Advertising (NABA) offers a newsletter four times a year on breweriana collecting. Dues are \$20.00 per year. Contact Robert Jaeger, 2343 Met-To-Wee Lane, Wauwatosa, WI, 53226

The Opener/Corkscrew Collector's Word Search Puzzle (Part II)
--

Harold Queen was winner of the Part I Puzzle in the October issue. For his efforts he received an **A-35-17-Pottstown** opener. The correct solution to Part I is -

E-6-58	ABC	I-11-69	HAMM	C-12-89	OCONTO
E-4-156	ACME	C-15-4	HARVARD	B-22-71	OLT
E-4-100	AETNA	H-3-35	HEIGENMOOSER	E-12-26	OLYMPIA
E-6-128	APEX	E-5-6	HOCHGREVE	E-14-417	ORTLIEB
E-8-32	ATLAS	A-29-36	HUB	I-19-22	PABST
E-7-41	BARTELS	I-11-318	HUBER	D-7-1	PERU
E-4-159	BESSER	Q-6-2	HUDY	F-3-1	POTOSI
I-22-25	BEST	E-1-8	HULL	E-10-143	PRIMO
A-15-2	BIRK	B-2-24	IROQUOIS	C-17-24	PRIOR
E-14-476	BOSCH	E-14-159	JUNG	P-26-3	QUINCY
N-24-2	BOYLSTON	R-8-1	KAJERS	E-3-65	RAHR
C-20-12	BURGOMASTER	E-2-8	KAMMS	E-7-32	SALINAS
I-7-11	CROFT	B-22-11	KESSLER	J-5-38	SCHOENHOFEN
I-6-89	CV	A-38-6	KING	P-8-80	SEIPP
M-3-4	DAEUFER	L-4-14	KOPPITZ	P-54-5	SHASTA
A-25-4	EDELWEISS	A-47-1	KRUG	I-14-41	STAG
H-1-3	ERIN	G-1-34	LEIDIGERS	E-4-87	STAR
H-5-10	FARMERS	E-3-53	LEINENKUGEL	E-11-14	STRAUB
C-12-44	FESENMEIER	D-3-11	LEISY	P-2-3	VOIGT
I-13-13	FITGER	P-8-73	LEMP	C-13-115	VON
E-14-100	GB	E-9-73	LION	P-18-3	WASHOE
E-8-2	GOEBEL	E-9-60	MAIER	E-5-16	WEBER
B-1-4	GUND	I-11-201	METZ	E-9-67	YOERGS
P-23-1	GUTSCH	I-17-88	MRBOH	B-24-36	YUENGLING

Part II consists of a word search using the above solutions from Part I. One of the above appears more than once.

Send your solutions for Part II to Ed Kaye, 1478 Albatross Rd., Sanibel Island, FL, 33957-3604. (If more than one correct solution to Part II is sent in, the earliest postmark wins.)

The winner of Part II will receive an M-21-1 RAINIER AND P-82-1 A-B as prizes.

The Opener/Corkscrew Collector's Word Search Puzzle (Part II)

```

L E I S Y S D A E U F E R G S H A S T A
E D E L W E I S S X E T N U T S E B T C
I X R X A S R E M R A F E T A R X L C M
N X E S S X X X I E X O F S G E A X X E
E S B R H X X N T T X R O C I S O T O P
N T U E O J U N G S X C H H K O X X C X
K R H G E H A R V A R D N X E O X X O M
U A X I X A K A M M S X E X S M R O N E
G U N D X M P I R O Q U O I S N E M T T
E B X I X M F I T G E R H Y L E S I O Z
L X T E E S H O B R M X C C E G S R X T
N L X L E B E O G U X X S N R I E P X I
O X K I N G S N X B X M T I W E B E R P
T X P O X L I A X X E A A U X H X I U P
S P X N E L I K R U G I R Q N O V R R O
L X X T G P A B S T X E L X S R E I A K
Y X R N M X V O I G T R X T X P R I O R
O A E Y X X C S A L I N A S R X Y D U H
B U L L U H O C H G R E V E X O X E P A
Y O E R G S X H U B F E S E N M E I E R

```

JANUARY 1994 ADDITIONS TO THE HANDBOOK
(COPYRIGHT JANUARY 1994 JOHN STANLEY)

A-3

34. E-Z MALT IT IS BETTER.

A-4

46. DRINK YAKIMA EXTRA PALE SPECIAL BREW

A-5

68. ATLANTIC BEVERAGE & PRODUCTS COMPANY, DRINK XXX ATLANTIC CITY, N.J.
69. ATLANTIC CITY BREWING & ICE COMPANY, DRINK XXX ATLANTIC CITY, N.J.
70. BERLAND MALT & HOP SUPPLY 1912 VLIET ST. MILWAUKEE
71. MILWAUKEE AVE. MALT & HOP SHOP 1312 MILWAUKEE AVE SOUTH MILWAUKEE, WIS. PHONE 301

A-13

24. BLUE RIBBON MALT EXTRACT OWNERS NO 836 3068 KENSINGTON AVE.

A-15

54. HOHEN-ADEL BRAU HEALTH BEER

A-16

12. "OPEN UP" WITH "AVALON" BOX LUNCH (MADE BY CATALINA BRG CO LOS ANGELES)
13. JOHN JACOB WOLF, INC. DRINK ELK BUCK PHILADELPHIA

A-20

45. BODENHEIMER'S HOFBRAU SANDWICHES LUNCH-BEER 222 N. MAIN WINSTON-SALEM, N.C. /
"BODENHEIMER WANTS TO SEE YOU" PHONE 9744
46. DISTRIBUTORS RAINIER BEER / NEVADA SUPPLY CO. PHONE 3191

A-21

98. BLUE RIBBON-METZ COMPLIMENTS OF CENTURY BEVERAGE CO. LARNED-DODGE CITY KANSAS
99. CARLING'S ALE M & K DISTRIBUTORS 190 N. FIRST ST. PHONE 6-2339
100. DRINK HEARTY CRYSTAL ROCK READING, PA. DIAL 9-1611
101. DRINK XXX PEARL BEER BOTTLE & KEG

A-28

42. THE EILERT BEVERAGE CO. DRINK GOLDEN SEAL SACKETT AV. & W 31 ST TO 33RD STS.
43. QUAKERTOWN BOTTLING WORKS OTTO MARTIN, PROP. QUAKERTOWN, PA. (BOTTLED VALLEY FORGE PRODUCTS)
44. G.A. STRAUB, BOTTLER QUAKERTOWN, PA. (BOTTLED VALLEY FORGE PRODUCTS)
45. USE "VERIBEST MALT" / MILWAUKEE DELICATESSEN 1619-0 ST. LINCOLN, NEB.

A-29

71. BEST-EVER MALT & HOP SYRUP REINE CO. S.F. / SAME

A-30

15. ANTHRACITE BEER

A-35

37. (PIC OF INDIAN SHOOTING BOW & ARROW) (EITHER (???) FROM CHEROKEE BREWERY ST. LOUIS, MO. OR LA CROSSE BREWERY LA CROSSE, WIS.)

A-42

20. "EASTSIDE" BEER, L.A. BREWING CO.
21. FISHER BEER / SAME

A-53

3. FINK BREWING CO. HARRISBURG, U.S.A. (WAS A-30-13)

A-54

1. AND JUST AS BIG A KICK OUT OF ANHEUSER-BUSCH BEER HOWARD'S RESTAURANT GEORGE ST. / YOU'LL GET A BIG KICK AT "FOOTLIGHT PARADE"

A-55

1. APACHE BEER / PHOENIX, ARIZ.

A-56

1. MILLER WANTS YOU TO BUY GENUINE DRAFT SHARP'S LITE HIGH LIFE

B-1

32. RUBSAM & HORMANN BR'G CO. R & H BOTTLED BEER NEW YORK CITY

B-2

43. EAGLE BEERS MADE IN UTICA PEERLESS LAGER MONARCH ALE
44. EASTSIDE BOTTLING WORKS CHEYENNE, WYO. SODA WATER HELLO 264 BEER
45. INTERBORO BREWING COMPANY BROOKLYN, N.Y. BISMARCK BEER

B-5

34. COMPLIMENTS OF BARTELS BREWING CO. "THE GUARANTEED PURE BEER"

B-13

98. "DUBOIS SPECIAL PALE DRY GINGER ALE" (SEE C-13-DUBOIS)
99. DRINK MARIETTA BEER
100. NECTAR PREMIUM BEER
101. POTH'S BEER / UMBERTO DI CLAUDIO 264 PINE ST. CAMDEN, N.J.

B-14

175. MONTANA BREWING CO. GREAT FALLS, MONT.
176. RED SUN PRODUCTS CO. RED SUN / "DOUBLE DUTCH"

B-17

12. STROH'S BOHEMIAN BEER DETROIT MICH / AMERICA'S FAVORITE

B-18

526. KEY TO BLUMER BR'G. CO. BEERS
 527. CHESTER BRG. CO'S. EDEL-BRAU CHESTER, PA.
 528. ELFENBRAU
 529. FAUST BEER. MET. BAR, ALL STRAIGHT WHISKEYS.
 530. LYKENS "CREAM TOP" LAGER
 531. KEY TO MOERSCHER'S SELECT BEER SEDALIA, MO.
 532. MONTEREY BEER
 533. MT. JOY BRWY CO. MT. JOY, PA.
 534. KEY TO PALMETTO BEER KNOXVILLE, TENN.
 535. KEY TO SCHWARZENBACH BREWING CO. GALETON, PA. - HORNELLSVILLE, N.Y.
 536. DRINK SOO FALLS BEER
 537. KEY TO UHL'S BEER BETHLEHEM, PA.

B-19

218. THE ALLIANCE BREWING CO. ALLIANCE, O.
 219. ENTERPRISE BREWING CO. / YOSEMITE BEER
 220. DRINK MATHIE'S RED RIBBON BEER
 221. THE MUESSEL BREWING CO. SOUTH BEND, IND. / SILVER EDGE BREW.
 222. COMPLIMENTS OF UKIAH BREWING & ICE CO.
 223. WESTERN BREWERY CO BELLEVILLE ILL DRINK BUFFET EXTRA

B-21

503. BAY CITY BEVERAGE CO. / THE FINEST
 504. BERKSHIRE BREWING ASSN. PITTSFIELD, MASS. LENOX ALE MADE IN THE BERKSHIRES
 505. CLEARFIELD BREWING CO. KEY TO EXTRA BEER CLEARFIELD, PA.
 506. DRINK CONSUMER'S FINE BEERS / ARMY
 507. DRINKING MAJESTIC BEER "EVERYBODY'S DOING IT" / BOTTLED AT THE BREWERY 3036 N. 6TH ST PHILA.
 508. MALTO HOPO HEALTH BEVERAGE NEAREST DRUGGIST HAS OR GETS IT / "GOOD NIGHT" EYE CLOSER "GOOD MORNING" EYE OPENER
 509. SOUTHWESTERN BREWERY AND ICE CO. GLORIETA BEER ALBUQUERQUE, N.M.
 510. WARREN BREWING CO. WARREN, PA. / CALL FOR WARREN BEER

B-22

113. DRINK CASSVILLE'S OLD FASHION LAGER
 114. DRINK CLICO BREW
 115. PECHSTEIN & NAGEL CO. KEOKUK, IOWA / PURITAS
 116. KEY TO YOUGH BEER CONNELLSVILLE, PA.

B-23

157. FLOCK'S CARBONATED BEVERAGES
 158. KAUNO BOHEMIAN MALT EXTRACT 2529 S. HALSTEAD STREET
 159. "SAN DIEGO" THE QUALITY BEER YOU PAY (SPINNER)
 160. WEISBROD & HESS PHILADELPHIA / DRINK PEACOCK BEVERAGES
 161. ZAHNINGER MALT PRODUCTS CO. 514-12TH ST. MILWAUKEE, WIS. / USE "FOSSCO" MALT EXTRACT

B-24

103. ATLAS PHONE CANAL 6200
 104. MARATHON CITY BREWING CO. DRINK TANNENBAUM BEER

B-27

5. ASTERWEISS BEER
 6. FURNITURE CITY BWG. CO. GRAND RAPIDS, MICH.

B-31

8. CALL FOR VALLEY BREW GOLD MEDAL BEER

B-47

2. MINNEAPOLIS BREWING CO. GOLDEN GRAIN BELT BEERS

B-58

23. COORS LIGHT
 24. MILLER GENUINE DRAFT (BLACK ON WHITE)

B-63

4. B-21-366 CLAUS
 5. B-21-231 CLINTON
 6. B-21-13 ENTERPRISE
 7. B-21-422 FAIRMOUNT
 8. B-21-247 GETTELMAN
 9. B-21-41 INDIANAPOLIS
 10. B-21-418 JETTERS
 11. B-21-187 NORTHHAMPTON
 12. B-21-135 SCHALLER
 13. B-21-509 SOUTHWESTERN

4. B-23-9 GENESSE
5. B-23-90 JUNG
- B-64
- B-68
1. THE CLEVELAND & SANDUSKY BREWING CO.
- B-69
(LARGER THAN B-14 & SMALLER THAN B-41)
1. MICHELOB DRY (R IN LOGO)
- C-2
6. SCHEIDT'S SCHEIDT'S VALLEY FORGE SPECIAL BEER PHILADELPHIA BRANCH 963 NORTH NINTH STREET
- C-9
36. DRINK VALLEY FORGE SPECIAL / NORRISTOWN, PA
37. WYOMING BREWING CO. INC. LAGER / SAME
- C-11
38. ATLANTA ICE & BOTTLING CO. VERIBEST & ROYAL BEVERAGE
- C-12
170. OLD TIMER'S ALE
- C-13
295. DUBOIS SPECIAL PALE DRY GINGER ALE (BOTTLE) DUBOIS (ON NECK LABEL) / "ORIGINAL" DRINK THE BEST DUBOIS BEVERAGES PHONE 53 (SEE E-6-18)
- C-15
22. CHEVALIER BEER
23. MONARCH BEER
24. MONARCH BREWING CO. CHICAGO MONARCH BEER
- C-17
68. 4-X BEER / DOUBLE EAGLE ALE
- C-18
24. THE STANTON BREWERY INC. TROY, N.Y.
- C-20
28. TRAINER'S QUALITY BEER PHILADELPHIA
29. WALDORF LAGER (EAGLE IN CREST)
- C-24
3. MOORE & QUINN'S DIAMOND ALE
- C-31
4. GOLD BOND LINCOLN 1400 / NEW YORK SPECIAL BREW
- C-36
5. KIEWEL'S WHITE SEAL PHONE 200178 (BOTTLE) (SPINNER)
- C-44
1. EAGLE BEER
- C-45
1. MILLER BREWING CO., MILWAUKEE. WI / LITE BEER IT'S IT AND THAT'S THAT (BLUE & RED ON WHITE)
- C-46
1. PITTSBURGH BREWING CO. IT'S A 'BURGH THING (RED ON WHITE)
- D-3
23. VALS FAVORITE / SAME (VALENTINE BLATZ BREWING CO)
- D-12
9. MAIER / SELECT
- D-18
1. IRON CITY BEER (CROWN LOGO)
- D-19
1. IRON CITY BEER (CROWN LOGO) / UNITED STATES OF AMERICA (EAGLE IN LOGO)
- D-20
1. IRON CITY BEER (CROWN LOGO) (RED & WHITE ON BLACK)
- E-2
31. THE HEBE CO. PROVIDENCE, R.I. / CAPRONI'S SODA PROVIDENCE, R.I.
- E-4
319. A & K MALT PRODUCTS CO., KENOSHA, WIS. / HIGH TEST MALT EXTRACT
320. BLUE LABEL MALT SYRUP / SAME
321. DEMAND GRAF'S BEVERAGES / THE BEST WHAT GIVES
322. WEISSBROD & HESS, PHILA. / SAME
- E-6
212. FREELAND BEER FREELAND, PA.
213. KIPS BAY BRIDGE NY
214. LUCKY LAGER BANKER ALE / SAME
215. PITTSBURGH BREWING CO. / IRON CITY LAGER PILSENER-FOX HUNT ALE

E-7

- 67. MONARCH BREWING CO. BULLFROG BEER
- 68. STEGMAIER, WILKES-BARRE, PA. / SAME
- 69. WAGNERS BOTTLING WORKS PHONE TRI-CITY 154 (WAGNER BREW CO GRANITE CITY, IL)
- 70. THE PH. ZANG BREWING CO. DENVER, COLO.

E-8

- 95. BARTELS BEVERAGES / SAME
- 96. MASS. BREW. CO. BOSTON / SAME

E-9

- 119. GRAF'S
- 120. VALLEY BREW

E-13

- 36. HAZELTON PILSENER BEER HAZELTON PILSENER BEER / SAME

E-14

- 752. ACME BEER ACME BEER
- 753. AMBASSADOR BREWING CO.
- 754. AMERICAN BREWING CO. ROYAL BEER / AMERICAN BREWING CO. TOPS BEER
- 755. ATLAS BREWING CO., CHICAGO, ILLINOIS
- 756. BIRK BROS. BREWING CO. PHONE LINCOLN 9-7600 / TROPHY BEER TROPHY BEER
- 757. BLUE ANCHOR BEVERAGES / SAME (SEE E-4-214)
- 758. BOBBIE ALE SODA WATER / GOLDEN DROPS WHITE CAP
- 759. BOSTON BEER CO. ESTABLISHED 1828 / BOSTON ALES BEER
- 760. DON'T SAY ALE SAY BOSTON LIGHT / DON'T SAY ALE SAY BB STOCK
- 761. BOWLER BEER TADCASTER ALE / HEIDELBRAU LAGER MATCHLESS PORTER
- 762. BOWLER BROTHERS TADCASTER ALE / HEIDELBRAU LAGER MATCHLESS PORTER
- 763. BREW "102" / SAME
- 764. PETER BUB BREWERY INC. WINONA, MINNESOTA
- 765. BURGER BREWERY CINCINNATI / BURGER BEER BURGER BEER
- 766. BURGER BREWERY ZINZINNATI / BURGER BEER BURGER ALE
- 767. THE BURGER BREWERY CINCINNATI, OHIO / BURGER BEER RED LION ALE
- 768. BURKHARDT BREWING CO. BOSTON, MASS. / SAME
- 769. COLD SPRING BREWING CO. LAWRENCE, MASS. / COLD SPRING ALES-BEER
- 770. COLD SPRING BR'G CO. LAWRENCE, MASS. / COLD SPRING ALES-BEER
- 771. COLUMBUS BEER / SAME
- 772. THE CONNECTICUT BREWERIES CO. / IDEAL BEER ROYAL ALE
- 773. CONSOLIDATED BOTTLING CO. NEWARK, N.J. / CONSOLIDATED BOTTLING CO. FINEST BOTTLED BEERS
- 774. COOPER'S BEER YORK, PA. / SAME
- 775. CREMO SPARKLING ALE & BEER / SAME
- 776. DOWN'S PURE ALE LOCKPORT, N.Y. / SAME
- 777. DREWRY'S BEER AND ALE / SAME
- 778. EICHLER'S EXTRA LIGHT BEER / EICHLER'S WINTER BEER
- 779. ENTERPRISE BRG. CO. FALL RIVER, MASS. / OLD TAP BEER OLD TAP BEER
- 780. ESQUIRE PREMIUM STONEY'S PILSNER
- 781. FELSENBRAU BEER CINCINNATI, OHIO / SAME
- 782. FESENMEIER BREWING CO. HUNTINGTON, W.VA. / SAME
- 783. FESENMEIER CO. WASHINGTON, W.VA. / WEST VIRGINIA BEER AND ALE
- 784. FLOCK'S BEER IT STANDS ON TOP
- 785. A. GETTELMAN BREWING CO. MILWAUKEE, WIS. / \$1,000 NATURAL PROCESS RATHSKELLER BREW
- 786. CALL FOR GOLD CROWN BEER / GOOD OLD RHEINGOLD BEER
- 787. GOLDEN GLOW BEER & ALE
- 788. GOLDEN GRAIN BELT / FRIENDLY BEER FRIENDLY FLAVOR
- 789. GRAUPNER'S POR-DER / GRAUPNER'S SELECT
- 790. GRIESEDIECK BEVERAGE CO. ST. LOUIS HEK
- 791. HANLEY'S EXTRA PALE
- 792. HEILEMAN'S OLD STYLE LAGER
- 793. HIGHLANDER PREMIUM BEER
- 794. HOLIHAN'S ALE-BEER / SAME
- 795. HORLUCK'S VIENNA / SAME
- 796. THE HUDEPHOL (NOTE SPELLING) BREWING CO. / CINCINNATI, OHIO
- 797. HUDEPOHL BREWING CO. CINCINNATI, OHIO
- 798. KOEHLER'S BEER
- 799. KUEBLER BREWING CO. EASTON, PA. / MELLO LIGHT KUEBLER
- 800. LOEWER'S ALES / LOEWER'S BEERS
- 801. LONE STAR BEER CERTIFIED QUALITY / SAME
- 802. LUCKY LAGER / SAME
- 803. MAIER SELECT BEER MAIER SINCE 1875 / SAME
- 804. MATZ HOLIDAY BREW & 1884 ALE
- 805. MINNEAPOLIS BREWING CO. THE MINNEAPOLIS BEER / GOLDEN GRAIN BELT BREW CANTERBURY ALE
- 806. OLD STOCK LAGER OLD STOCK PILSENER

E-14

- 807. PFEIFFER BREWING CO. ST. PAUL, MINNESOTA / PFEIFFER'S FAMOUS BEER
- 808. PICKWICK ALE PICKWICK BEER / SAME
- 809. PIONEER BEER / SAME
- 810. PITTSBURGH BREWING CO. / IRON CITY PILSNER LAGER FOX HUNT ALE
- 811. RAINIER BREWERY CO. INC. SAN FRANCISCO, CAL. / RAINIER BEER & ALE
- 812. RAINIER BREWING CO. SAN FRANCISCO, CAL. / BEER-RAINIER-ALE
- 813. RAINIER BREWING CO. SAN FRANCISCO, CAL. / BEER-RAINIER-ALE BEER-RAINIER-ALE
- 814. RED TOP BWG. CO. RED TOP ALE / BARBAROSSA BEER CINCINNATI, OHIO
- 815. RED TOP MALT EXTRACT CINTI., O. / SAME
- 816. ROCHESTER BREWING CO. INC. ROCHESTER, NEW YORK / GOLDEN OLD TOPPER ALE-BEER
- 817. ROYAL AMBER BEER ALE / SAME
- 818. JACOB RUPPERT'S KNICKERBOCKER / SAME
- 819. SABINAS BEER TEXAS PRODUCT / SAME
- 820. AUG. SCHELL BRG. CO. PLEASURE PAK / SAME
- 821. SCHMIDT BEER OF ST. PAUL / PFEIFFER'S FAMOUS BEER
- 822. SCHMIDT BREWING CO. ST. PAUL, MINN. / REAL DRAFT BEER FLAVOR
- 823. SILVER TOP AND DUQUESNE PILSENER / SAME
- 824. SILVER TOP DUQUESNE PILSNER
- 825. SPRENGER BREWING CO. LANCASTER, PA.
- 826. STAG BEER / SAME
- 827. STANDARD BREWING CO. ROCHESTER, N.Y. TEL. GLEN 392 / STANDARD DRY ALE OX CART BEER
- 828. STONEY'S PILSENER
- 829. SUPERIOR BREWING CO. FORT WORTH, TEXAS
- 830. NICK THOMAS BEER LONDON BOBBY ALE / SAME
- 831. TIVOLI BEER-DENVER / SAME
- 832. UNEEDA BREWING CO. WHEELING, W.VA. FINE BOTTLE BEERS
- 833. WACKER BREWING CO. LANCASTER, PA.
- 834. DRINK WAUSAU BRG. CO. BEER / SAME
- 835. YUENGLING'S SPECIAL / MADE IN POTTSVILLE, PA.

E-23

- 21. MCAVOY ALMA MATER / SAME
- 22. TAVERN PALE

E-25

- 5. CONSUMERS BREWING COMPANY OF NEW YORK LIMITED
- 6. KRUEGER'S SPECIAL BREWS. / SAME
- 7. AUG. SCHELL BREWING CO. DRINK DEER BRAND

F-2

- 47. GERMAN MALT BOTTLERS SUPPLIES / 1012 MISSION NU-ON PRODUCTS CO. SAN FRANCISCO

F-4

- 37. THE QUEEN CITY BREWING CO. CUMBERLAND, MARYLAND

F-9

- 14. ESSLINGER, INC. PHILA., PA. / OLD STYLE LAGER / GOLD MEDAL SPECIAL / NOURISHING-HEALTHFUL
- 15. MASTER BREW / OXFORD CLUB GINGER ALE / KEARNEY ICE & STORAGE CO. / PHONE 11

F-12

- 6. VIM & PERFECTION MALT 3268 KENSINGTON AVE. PHILA., PA.

F-18

- 11. GEO. DOEHNE'S BREWERY, HARRISBURG, PA. / DOEHNE'S CREAM ALE STOCK ALE
- 12. ESCANABA BREWING CO. PHONE 121 / HOME OF FANCY BEERS

F-27

- 5. SOUTH BEND BEVERAGE & ICE ASS'N / POLAR ICE-ARTIFICIAL PHONES 4300-4301

G-1

- 65. SOUTHERN PACIFIC (BOTTLE)

G-5

- 36. DRINK LYKENS BRG. CO'S, CREAM TOP LAGER
- 37. BOTTLER'S OF SOFT DRINK AND SCHLITZ BEER ISAAC MERKEL & SONS PLATTSBURGH, N.Y.

G-9

- 88. CANAVAN-LEGGETT BREWERY INC PHONE 632

G-25

- 6. CHILTON MALTING COMPANY CHILTON MALT A SUPERIOR PRODUCT CHILTON, WIS.

G-28

- 10. HONOLULU BREWING CO. (BLACK ON SILVER)
- 11. LITE BEER (WHITE ON BLUE)
- 12. MILLER GENUINE DRAFT (BLACK ON GOLD)
- 13. O'DOUL'S NON-ALCOHOL BREW (WHITE ON GREEN)
- 14. PABST (WHITE ON BLUE)
- 15. PABST GENUINE DRAFT (BLACK ON GOLD)
- 16. PABST LIGHT (BLUE ON SILVER)

- G-32
1. LITE BEER
- G-33
1. BUDWEISER LAGER BEER (ON LABEL) (EAGLE IN A)
- G-34
1. THE BELMONT PRODUCTS CO. MARTINS FERRY, OHIO LICENSED MFRS. CUP-TOP PALE DRY GINGER ALE
- G-35
1. LITE (BLUE ON WHITE)
 2. MILLER (NO COLOR)
 3. MILLER (RED LETTERS)
 4. MILLER (WHITE ON RED)
 5. MILLER GENUINE DRAFT
- G-36
1. MICHELOB DRY (NECK LABEL) MICHELOB DRY BEER (BOTTLE LABEL)
- H-1
38. CONSUMERS BREWING CO. CONSUMERS ALE HILLSGROVE, R.I.
 39. E-Z MALT HOP FLAVORED IT IS BETTER
 40. SCHLITZ DISTRIBUTORS POINT PLEASANT-BAY HEAD ICE & COAL CO. PHONES 34 & 35
- H-2
166. ATLAS BR'G CO. PHONE 6200
 167. BLUMER'S SPECIAL BREW BEVERAGES
 168. THE LIST BREWING CO. PLATTEVILLE, WIS.
 169. DRINK PRIMA SPECIAL
- H-6
15. OLYMPIA IMPORTS, OLYMPIA, WA. GRENZQUELL / GRENZQUELL
- H-8
19. BREWED AND BOTTLED BY ATLANTIC BREWING CO. CHICAGO, ILL. ATLANTIC TAVERN PALE BEER (BEER GARDEN SCENE) INTERNAL REVENUE TAX PAID CONTENTS 12 FL. OZ. TELEPHONE LINCOLN 8210 (NECK LABEL) ATLANTIC TAVERN PALE BEER
 20. THE GLOBE BREWING CO., BALTIMORE, MD. ARROW BEER IT HITS THE SPOT INTERNAL REVENUE TAX PAID, CONTENTS 12 FL OZ. (NECK LABEL) HOPPED FOR FINER FLAVOR (PIC OF LEAVES) IT HITS THE SPOT
- I-3
36. BUDWEISER KING OF BEERS / MAY I BE YOUR CHOICE DONA HASSLER (UNION LABEL) FOR MISS BUDWEISER...THANKS
 37. FOX DELUXE
- I-6
95. FREDERICK BROS. 818 W. 37TH PLACE PHONE BLVD. 2537
- I-7
79. FREDERICK BROS. 818 W. 37TH PL. PHONE BLVD. 2537
 80. MEISTER BRAU "THE BEER"
- I-11
367. AMBROSIA BRWG CO. NECTAR BEER
 368. THE ONLY QUEEN FOR THE "KING OF BEERS" / VOTE FOR SHARON HILGEMAN BAKERY PRODUCTS DIVISION QUEEN FOR '62
 369. OVER A MILLION A DAY SAY LONE STAR BEER / SAME
- I-12
200. BUDWEISER (LEFT HANDED)
 201. FOX DELUXE
 202. VAN MERRITT BRWG CO CHICAGO / VAN MERRITT
- I-13
126. CANADIAN ACE BRAND BEER & ALE MADE IN U.S.A.
- I-14
75. COORS AMERICA'S FINE LIGHT BEER
- I-17
286. MEISTER BRAU.....WONDERFUL
- I-29
1. BURGIE! / (PIC OF MAN)
- J-1
17. AMBROSIA BREWING CO. NECTAR BEER
 18. ATLAS PRAGER BOHEMIAN LIGHT LAGER
 19. ATLAS PRAGER EXTRA LIGHT DRY BEER
 20. MEISTER BRAU THE CUSTOM BREW
 21. REGENT PREMIUM ALE-BEER
 22. TAVERN PALE
 23. VAN MERRITT
- J-3
37. FOX DELUXE
 38. GRIESEDIECK BROS. BEER-ST. LOUIS

104. FOX DELUXE

J-5

J-11

3. SCHLITZ JOS. SCHLITZ BRG. CO. MILWAUKEE, WIS. U.S.A. BREWERIES AT MILWAUKEE, WIS. BROOKLYN, N.Y. AND LOS ANGELES, CALIF. / SCHLITZ THE BEER THAT MADE MILWAUKEE FAMOUS

K-5

7. PABST BLUE RIBBON BEER

K-10

2. PABST BLUE RIBBON

M-3

40. DRINK DEER PARK BEER / FOR TASTE AND QUALITY / FOR PURITY AND STRENGTH / MADE IN PORT JERVIS N.Y. (RED, YELLOW)
41. HARRISON BEVERAGE CO., HARRISON, N.J. HEIDELBERG OLD STYLE (BLUE)
42. SEITZ BREWERY EASTON, PA.

M-5

4. FALSTAFF BEER (IN SHIELD) MILLER HIGH LIFE "ANOTHER SERVICE OF" WHITENER & RUDROFF DISTRIBUTING CO. JEFFERSON CITY, MISSOURI
5. HAMMS-MILLER'S GETTLEMAN-BOSCH AND HUBER BEERS ANTIGO BEVERAGE CO. INC PHONE 623-2716-ANTIGO, WIS PHONE 276-3252

M-23

12. ATLAS BREWING CO. CHICAGO, 8, ILL. / ATLAS PRAGER BOHEMIAN LIGHT LAGER

M-29

46. BUDWEISER KING OF BEERS (EAGLE IN A) CHAS. E. BROWN BEVERAGE CO. DISTRIBUTORS LEBANON, MISSOURI
47. FALSTAFF DISTRIBUTORS, INC. OF DALLAS R.E. (B0B) LEE, PRES. DALLAS 26, TEXAS
48. MILLER HIGH LIFE STAG BEER CARLYLE BOTTLING WORKS CARLYLE, ILL. PHONE 3323
49. SCHLITZ THE BEER THAT MADE MILWAUKEE FAMOUS DISTRIBUTORS TROPICAL FRUITS COMPANY LAREDO DIAL 8-8311 TEXAS

M-30

50. ANHEUSER-BUSCH EMPLOYEES' CREDIT UNION ST. LOUIS MISSOURI
51. (EAGLE IN A) GUS' BAR WINES-LIQUORS 3241 S. SPRING AVE. - PROSPECT 6-8509 GUS. H. SCHILDNECHT
52. FALSTAFF (IN SHIELD, LION'S HEAD) SCHROEDER DIST. CO. 216 W. BLUMBERG ST. SEGUIN, TEXAS
53. FALSTAFF BEER (IN SHIELD, LION'S HEAD) MILLER HIGH LIFE "ANOTHER SERVICE OF" WHITENER & RUDROFF DISTRIBUTING CO. JEFFERSON CITY, MISSOURI
54. MICHELOB ON TAP SCHMIDT'S TAVERN 5400 DEVONSHIRE 353-9518 HONEST FRED OPEN TILL 1:30 P.M. (PIC OF FISHERMAN WITH HOOK IN HIS REAR PANTS)
55. DISTRIBUTORS OF OLD STYLE-SPECIAL EXPORT KINGSBURY BALLANTINE ALE BELOIT BEVERAGE COMPANY JOE AND DON MORELLO PHONE 389-2221 SO. BELOIT, ILL. (HEILEMAN'S OLD STYLE LOGO)
56. WHAT'LL YOU HAVE PABST BLUE RIBBON LANCASTER DIST. CO. WALT YAGER LANCASTER, WISC.
57. SCHMIDT MICKEY'S PFEIFFER AND HEILEMAN LIGHT BEERS DOHERTY DISTRIBUTING CO. ARDEN HILLS, MN. 483-5466
58. STAG BEER CARLING BLACK LABEL BEER SCHWARTZ BROS. WM. SCHWARTZ 1222 BROADWAY HANNIBAL, MO. PHONE AC 1-0507

M-33

7. OERTELS' 92 BEER

M-39

11. CHEERY BEERY EDELWEISS

M-51

8. BUDWEISER ON TAP SHARP CORNER BAR ART HOLTMEIER, PROP. FIFTH & STAFFORD WASHINGTON, MO. PHONE: BE 9-9876
9. FALSTAFF (IN SHIELD) FALSTAFF DISTRIBUTING CO. 517 WILSON ST. PH. MI 3-4845 BROWNWOOD, TEXAS

M-72

3. DISTRIBUTOR NEUWEILER BEER, ALE & PORTER HOWARD L. BLANKENBILLER SINKING SPRING, PA.

M-73

13. HEURICH FINE BEER / FAMOUS FOR QUALITY SINCE 1873 / WASHINGTON, D.C. (RED)

M-81

3. BUD LIGHT BEER / SAME

M-82

7. MEISTER BRAU / SAME

M-83

11. BUSCH BEER (PIC OF MOUNTAINS) CRAWFORD SALES COMPANY OLATHE, KANSAS 782-0801
12. PABST BLUE RIBBON BEER NORTH MISSOURI BEVERAGE CO., INC. 1305 SOUTH OSTEOPATHY KIRKSVILLE, MISSOURI 63501

- M-91
7. LOWENBRAU (LION) / SAME
- M-93
1. BUDWEISER KING OF BEERS BREWED ACROSS CANADA BY LABATTS (BOTTLE LABEL) / SAME
- M-94
1. MILLSTREAM BREWING CO AMANA, IOWA (PIC OF MILL & WATERWHEEL) (WHITE ON RED)
- M-95
1. GB (IN SHIELD) CHRISTMAS '53 (GRIESEDIECK BROS LOGO)
- M-96
1. CARLING, MILLER & RHEINGOLD BEER T.R. MCCOMSEY INC. JAKE BEAR, OWNER CALL EX 4-4015 FOR IMMEDIATE DEL.
- M-97
1. (EAGLE IN A) MILITARY SALES
- M-98
1. PABST & LEINENKUGEL OLSON & GOODMAN INC.
- N-4
7. JACOB RUPPERT / KNICKERBOCKER (EAGLE)
- N-9
28. DRINK PREMIUM BEER FALSTAFF-BLUE RIBBON AND COOK'S MURPHEY BEVERAGE CO. CLARKSDALE, MISS.
29. DRINK GOLDEN GLOW BEER WISCONSIN'S FINEST CHICAGO DISTRIBUTING CORP. 2501 S. KEDZIE AVE.
30. TWIN CITY BOTTLING CO. MENASHA, WIS. (1911-1920 OWNED BY WERNER WINZ WHO OWNED MENASHA BREWING CO.)
- N-18
13. LITE BEER
14. MILLER GENUINE DRAFT LIGHT
15. SHARP'S
- N-22
6. ORDER KNICKERBOCKER BEER (PIC OF COLONIAL MAN) ATLAS DISTRIBUTING CORP. WORCESTER, MASS. - TEL. 2-7548
- N-29
10. DISTRIBUTORS ATLAS PRAGER BEER KANE COUNTY ATLAS SALES GENEVA 1100
11. SCHEIDTS VALLEY FORGE BEER AND RAMS HEAD ALE NORRISTOWN, PA
- N-30
6. WELCOME TO MILLER TIME (WHITE ON RED)
7. POINT SPECIAL PREMIUM BEER (5 STARS) (RED & BLUE ON WHITE)
- N-40
27. BUSCH BEER / ANHEUSER-BUSCH, INC. 1987 OFFICIAL PRODUCT (EAGLE IN A)
- N-43
4. HAMM BEER & OLD FORESTER FLYNN BEVERAGE SERVICE
- N-70
1. DRINK EDELWEISS BEER / DAN FLYNN'S BIG STORE ROCK ISLAND, ILL.
- O-4
29. BIRK BROS. BREWING CO LINCOLN 7600
30. COMPLIMENTS M.K. GOETZ BREW. CO. ST. JOSEPH & KANSAS CITY, MO.
31. DRINK JAX
- O-6
4. PETER BUB BREWERY, INC. DRINK BUB'S "ALL AMERICAN" BEER WINONA, MINN.
- O-16
1. COOK'S (RED LETTERS)
- P-1
11. PATENTED (SMALL LETTERS) ANHEUSER-BUSCH (LARGE LETTERS) FEB. 1-76 (SMALL LETTERS)
12. EXCELSIOR BREWERY
13. JOS. LEOPOLD & BRO. BELLEVILLE, ILLS.
14. M. SCHORR BREWERY WATERLOO, ILLS.
- P-5
9. COMPLIMENTS BARTHOLOMAY BREW'G CO. ROCHESTER, N.Y.
10. BERGNER & ENGEL
- P-8
178. AMERICAN BREWING AND MALTING COMPANY GREAT FALLS MONT. / SAME
179. THE AMERICAN BREWING CO. ST. LOUIS, MO. / SAME
180. DRINK DICK BROS. PILSENER AND SUPERBA BEER FINEST OF ALL GLASNER & BARZEN, SOLE AGTS. / GLASNER & BARZEN WHOLESALE LIQUOR DEALERS, KANSAS CITY, MO.
181. ENTERPRISE BREWING CO. SAN FRANCISCO, CAL. / SAME
182. SCHLITZ BEER / SCHLITZ MILWAUKEE U.S.A.
183. SEATTLE BREWING & MALTING CO. / DRINK RAINIER
184. SEATTLE BREWING & MALTING COMPANY RAINIER BEER / RAINIER BEER

- P-9
20. COMPLIMENTS OF THE VIRGINIA BREWING CO. ROANOKE, VA. / SAME
- P-10
70. WACKER & BIRK BREWERS OF FINE BEERS / ULMER MALT BEER
- P-11
2. FRESNO BEER
- P-14
19. WHAT'LL YOU HAVE? PABST BLUE RIBBON / PRESTON DISTRIBUTING CO. SPENCER, IOWA
- P-15
6. BLATZ BEER MIKE REDA JR. DISTRIB. CO. PH. 18 PITTSBURG, KANS.
7. SEBEWAING OLD STYLE BEER
- P-17
12. DRINK TOSETTI BEER / TOSETTI MEANS QUALITY
- P-19
51. AGENTS ORIGINAL BUDWEISER L. ROSENFELD CO. WHOLESALE LIQUOR DEALERS, COUNCIL BLUFFS, IOWA.
52. FRESNO BREWING CO. FRESNO, CAL. OLD STEPSTONE WHISKEY
53. DRINK SCHLITZ BEER AT H. PAHL'S GRAND ISLAND, NEB.
54. SOLE AGENTS WIELAND BEER LOS ANGELES, CAL. COMPLIMENTS OF ADLOFF & HAUERWAAS
- P-23
3. DRINK OLD STYLE LAGER / SAME
4. WAVERLY BREWING CO. BREWERS OF UNEXCELLED BEERS WAVERLY, IOWA
- P-26
5. ANHEUSER BUSCH / (EAGLE IN A) 1900 JAN 1ST
- P-31
7. COMPLIMENTS OF AMERICAN BRG. & MALTING CO. GREAT FALLS, MONT.
- P-39
2. INDIANAPOLIS BREW'G CO. / CHAMPAGNE TAFEL BEER (ON BLADE: TONICA INDIANAPOLIS BRWG CO. GERMANY)
- P-51
44. COMPLIMENTS OF ANHEUSER-BUSCH BRG. / PHONES MAIN (???) HOME A. 3636
45. ATLANTA BREWING AND ICE CO. ATLANTA, GA. / ASTORIA
- P-55
4. COMPLIMENTS OF STULZ BROS. (ILLEGIBLE) 1416-1418 MAIN ST. KANSAS CITY, MO. / SAME
- P-57
9. THE AMERICAN BREWING CO., ST. LOUIS, MO., U.S.A. / THE SAINT LOUIS A.B.C. BOHEMIAN BEERS
10. BLATZ MILWAUKEE / FINE TABLE BEERS
- P-74
2. COMPLIMENTS OF ESCANABA BREWING CO. ESCANABA, MICH. HOME OF NORTHERN BEAUTY BEER.
- P-82
9. LOS ANGELES BREWING CO. PHONE EAST 82 LOS ANGELES, CAL. / EXTRA PALE EXPORT MISSION MALT TONIC
- P-98
4. OLDENBERG BREWERY AND ENTERTAINMENT COMPLEX FT. MITCHELL, KY. (PIC OF BREWERY) (WHITE ON GRAY)
5. OLDENBERG BREWERY AND ENTERTAINMENT COMPLEX FT. MITCHELL, KY. (PIC OF BREWERY) J.F.O. ANNUAL CONVENTION APRIL 1993 (WHITE ON BLACK)
- P-99
1. COMPLIMENTS MINNEAPOLIS BREWING CO. MINNEAPOLIS MINN "GILT EDGE" THE DETROIT PATD. JULY 10 94
- P-100
1. RAINIER BEER
- P-101
1. HAUCK'S RED MONOGRAM BEER
- P-102
1. INDIANAPOLIS BREWING CO / PROGRESS BRAND
- P-103
1. MAIER & ZOBELIN BREWERY PILSENER IMPERIAL THE POPULAR BEVERAGES OF LOS ANGELES, CAL.
2. MAIER & ZOBELIN BREWERY LOS ANGELES, CAL. DRINK PILSENER IMPERIAL & SELECT THE BEST AND PUREST BREWED
- P-104
1. MILLER HIGH LIFE / (SWISS LOGO) (WHITE ON RED)
- P-105
1. INDIANAPOLIS BREW'G CO. / CHAMPAGNE TAFEL BEER (ON BLADE: INDIANAPOLIS BRWG CO. GERMANY / TONICA)

Q-5

- 17. LITE (WHITE ON YELLOW)
- 18. RAINIER R (RED ON WHITE)
- 19. RAINIER R (WHITE ON RED)

Q-6

- 5. STROH LIGHT (RED ON YELLOW)
- 6. STROH'S BEER (WHITE ON RED)

Q-8

- 34. SCHLITZ MALT LIQUOR (PIC OF BULL) (BLUE ON YELLOW)

Q-10

- 21. CAPITAL BREWERY, MIDDLETON, WI GARTEN-BRAU
- 22. COORS REACHING OUT TO YOU (RED ON WHITE)
- 23. PEARL BREWING CO. PEARL LAGER BEER 1886 (XXX LOGO) 1986 (RED ON WHITE)

Q-12

- 26. BEER CAN COLLECTORS OF AMERICA CANVENTION XXIII NEW ORLEANS, LA 1993
- 27. CARLSBERG BEER 1847 (PIC OF CROWN) (WHITE ON GREEN)
- 28. HAMM'S BEER (PIC OF BEAR) (RED ON WHITE)
- 29. PABST BLUE RIBBON BEER (ON RIBBON) P B R ME ASAP (WHITE ON BLUE)
- 30. STROH (IN LION LOGO) SIGNATURE (2 HOPS STALKS) (GOLD ON BLACK)

Q-18

- 27. AMSTEL LIGHT (RED ON WHITE)
- 28. BUD DRY DRAFT (WHITE ON BLUE)
- 29. EXTRA GOLD (GOLD ON BLACK)
- 30. LITE BEER (ON ARM W/ HAND) (BLACK ON ORANGE)
- 31. LITE BEER (BLUE ON WHITE)
- 32. LONE STAR BEER (WHITE ON RED)
- 33. LOWENBRAU (GOLD ON BLUE)
- 34. LOWENBRAU LIGHT (GOLD ON BLACK)
- 35. MILLER BREWING COMPANY REMINDS YOU TO PLEASE THINK WHEN YOU DRINK / LITE BEER (BLUE ON WHITE)
- 36. MILLER SHARPS (RED ON WHITE)
- 37. OLD COLUMBIA BREWERY SAN DIEGO, 234-BREW (RED ON WHITE)
- 38. PETE'S WICKED ALE (WHITE ON RED) (MICRO BREW PALO ALTO, CA.)
- 39. ST. STANS (GREEN ON WHITE) (MICRO BRWY MODESTO, CA)
- 40. STEG (WHITE ON RED)
- 41. WILD GOOSE (PIC OF GOOSE) CHESAPEAKE'S OWN (RED & BLUE ON WHITE)
- 42. WOODSTOCK BREWING CO. HUDSON LAGER (WHITE ON RED)
- 43. YUENGLING-POTTSVILLE, PA. DARK BREWED PORTER (BLACK ON RED)
- 44. YUENGLING-POTTSVILLE, PA. LORD CHESTERFIELD ALE (WHITE ON GREEN)
- 45. YUENGLING-POTTSVILLE, PA. ORIGINAL BLACK & TAN (GOLD ON BLACK)
- 46. YUENGLING-POTTSVILLE, PA. PREMIUM BEER (WHITE ON BROWN)
- 47. YUENGLING-POTTSVILLE, PA. PREMIUM LIGHT (WHITE ON BLUE)
- 48. YUENGLING-POTTSVILLE, PA. TRADITIONAL LAGER (RED ON WHITE)

Q-19

- 8. BUDWEISER (IN RED BOWTIE) (EAGLE IN A) KING OF BEERS (BLACK ON WHITE)
- 9. LITE A FINE PILSNER BEER (IN LOGO) (BLUE ON WHITE)

Q-23

- 2. MILLER GENUINE DRAFT LIGHT DEALER IMPRINT HERE (BLACK ON WHITE)

Q-29

- 2. A LICENSED PRODUCT OF MILLER BREWING COMPANY MILLER (IN LOGO) (BLACK ON WHITE) / LITE A FINE PILSNER BEER (IN LOGO) (BLUE & GOLD ON WHITE)

Q-31

- 16. ATLANTIC CITY DIVING HORSE LAGER BEER (BLUE ON WHITE)
- 17. BALLANTINE ALE (THREE RINGS) XXX AMERICA'S LARGEST SELLING ALE (RED ON GREEN)
- 18. LITE BEER (PIC OF FOOTBALL) (BLUE ON WHITE)
- 19. LITE BEER (PIC OF SURFBOARD AND WAVES) (BLACK ON WHITE)
- 20. NATURAL LIGHT BEER (BLUE ON WHITE)
- 21. OLDENBERG BREWERY AND ENTERTAINMENT COMPLEX FT. MITCHELL, KENTUCKY (BLACK ON BLUE, GREEN, ORANGE, PINK, AND YELLOW)
- 22. RAINIER BEER MT. RAINIER WASHINGTON (PIC OF MOUNTAIN) (RED ON WHITE)

Q-32

4. ABITA BEER (GREEN ON WHITE)
5. BUD (PIC OF SHAMROCK) (WHITE ON GREEN)
6. BUD DRY (PIC OF SHAMROCK) (WHITE ON GREEN)
7. BUD LIGHT (PIC OF SHAMROCK) (WHITE ON GREEN)
8. COORS (PIC OF MOUNTAIN, BASEBALL & BAT) (BLACK ON WHITE)
9. MILLER HIGH LIFE (PIC OF BASEBALL & BAT) (BLACK ON WHITE)
10. ROCK LIGHT (FIVE STARS) (BLUE ON WHITE)
11. ROLLING ROCK THE DRINKIN' O' THE GREEN (PIC OF HORSEHEAD ON SHAMROCK) (GREEN ON WHITE)
12. SHARP'S (PIC OF BASKETBALL) (BLACK ON ORANGE)

Q-35

1. COORS (RED ON WHITE)

Q-36

1. MICHELOB GOLDEN DRAFT (BLACK & RED ON WHITE)
2. O'DOUL'S NON ALCOHOL BREW

Q-37

1. MICHELOB.LIGHT (RIBBON LOGO)

Q-38

1. COORS LIGHT THE SILVER BULLET (BLACK ON GREEN)
2. COORS LIGHT THE SILVER BULLET (BLACK ON ORANGE)
3. COORS LIGHT THE SILVER BULLET (BLACK ON PINK)

Q-39

1. KEYSTONE BEER (RED ON WHITE)
2. KEYSTONE LIGHT BEER SPECIALLY MARKED CANS QUALITY BOTTLED BEER TASTE (PIC OF HOPS) (BLUE ON WHITE)
3. KILLIAN'S RED (PIC OF 2 HORSE HEADS) (ORANGE ON WHITE)

Q-40

1. RAINIER DRAFT ICE LAGERED & COLD FILTERED LIFT / TWIST PRY LIFT (MAGNET) (BALLPOINT PEN) (BLACK ON BLUE)

Q-41

1. LITE BEER (BLUE ON WHITE)
2. MILLER HIGH LIFE (RED ON WHITE)

Q-42

1. HAMM'S (PIC OF BEAR) OPENER / TO OPEN CAN PRY WITH EDGE (BLACK ON WHITE)
2. OLYMPIA "IT'S THE WATER" OPENER / TO OPEN CAN PRY WITH EDGE (WHITE ON BLUE)
3. PABST BREWING CO SINCE 1844 (LOGO & B) OPENER / TO OPEN CAN PRY WITH EDGE (LIGHT BLUE ON BLUE)

Q-43

1. HEILEMAN'S BEER (GREEN) SPECIAL EXPORT. (RED) (ON WHITE)

Q-44

(PLEASE NOTE LISTED AS Q-34 OCTOBER 93 NEW DISCOVERIES)

(Q-34 WAS ALREADY ASSIGNED OCTOBER 91 NEW DISCOVERIES)

1. FRANKENMUTH OLD GERMAN STYLE BEER OLD DETROIT AMBER ALE (BLACK & RED ON YELLOW)
2. MILLER (WHITE ON RED)

R-14

1. PIONEER BREWING CO. FAIRBANKS, ALASKA

R-15

1. BUD KING OF BEERS. COINS - KEYS (GOLD & WHITE ON RED)
2. BUSCH BEER COINS - KEYS (SILVER & WHITE ON GREY)

R-16

1. BUD DRY / SAME (BLUE ON WHITE HELMET)
2. BUD LIGHT / SAME (BLUE & LIGHT BLUE (LOGO) ON BLUE HELMET)
3. BUDWEISER / SAME (RED & WHITE (BOWTIE) ON RED HELMET)

R-17

1. BUD LIGHT (WHITE ON BLACK)
2. BUD LIGHT (WHITE ON BLUE)
3. BUD LIGHT (WHITE ON PURPLE)
4. BUD LIGHT (WHITE ON RED)

**A sincere thank you to the following devoted collectors who took the time
to send their New Additions (ULs) to me to make this list possible.**

It is of value and appreciated by all of us.

(Number in parenthesis is number of additions sent in by that member)

JOHN ARCHER (5)
MARK BARREN (2)
LARRY BIEHL (5)
FRED BOLTON (3)
JOE CARDONE (1)
HERB DANZIGER (1)
BILL ENNIS (3)
JACK FORD (24)
FIL GRAFF (34)
HERB HAYDOCK (1)
OLLIE HIBBELER (4)
BEN HOFFMAN (19)
FRANK KRAFT (1)
ROGER JARRELL (1)
NORMAN JAY (3)
ART JOHNSON (2)
GEORGE LOHMILLER (1)
RANDY LONG (3)
LARRY MOTER (6)
BILL PATTIE (2)
HAROLD QUEEN (20)
ART SANTEN (110)
RAY SCHMEISSER (2)
DON SHERMAN (30)
JOHN STANLEY (10)
VERNE VOLLRATH (14)
HARRIET WALDO (2)
DON WHELAN (14)
TONY ZANGHI (5)
TOM ZRUNO (1)

SPOUSE'S CORNER

Hopefully next issue will be our first Spouse's Corner article. I would like to hear from any member's spouse about their own area of collecting. Pat would like to start a "Spouse's Corner" in the next issue. Look for a questionnaire in that issue - then be brave and fill it out!

Spouse's Are Special!!!

NEXT ISSUE

Membership Roster

1914 Crown, Throat, and Opener Inc. Catalog

1994 Reading Convention Itinerary

Spouse's Corner Questionnaire

TAKE A RIDE
ON THE
READING

JUST FOR OPENERS

16TH ANNUAL CONVENTION
APRIL 28-30, 1994

SPONSORED BY YUENGLINGS

THE INN AT READING
1040 PARK ROAD, WYOMISSING, PA. 19610
(A SUBURB OF READING, PA.)

PLAN NOW TO ATTEND J.F.O.'S **SWEET 16** CONVENTION IN THE HEART
OF THE PENNSYLVANIA DUTCH COUNTRY

PLANS FOR THE CONVENTION INCLUDE:

TRIP TO AMERICA'S OLDEST OPERATING BREWERY, D.G. YUENGLING
AND SON, POTTSVILLE, PA. (OPERATING SINCE 1829)

RENNIGAR'S SPRING ANTIQUE EXTRAVAGANZA AT KUTZTOWN
(OVER A THOUSAND DEALERS, ONLY 25 MINUTES FROM MOTEL)

YOUR CONVENTION HOST FOR 1994

BEN HOFFMAN
213 SIMMONS ROAD
PERKIOMENVILLE, PA. 18074
PHONE (215) 287-8243

BRING A DISPLAY !!!

JUST FOR OPENERS

16TH ANNUAL CONVENTION REGISTRATION
APRIL 28-30, 1994

THE INN AT READING
1040 PARK ROAD, WYOMISSING, PA. 19610
(A SUBURB OF READING, PA.)

OUR CONVENTION HOST WENT THE EXTRA "TRACK" TO GIVE JFO MEMBERS THE
"LONG HAUL" FOR THEIR REGISTRATION FEE OF \$30:

INCLUDES HOSPITALITY ROOM (OR SHOULD WE SAY CAR?), TRANSPORTATION TO
AMERICA'S OLDEST OPERATING BREWERY,
ONE SHOW TABLE (\$10 PER ADDITIONAL TABLE) AND A *CONVENTION OPENER* !!!

NAME: _____

ADDRESS: _____

CITY _____ STATE(PROVINCE) _____ ZIP _____

DATE YOU WILL ARRIVE _____ APPROXIMATE TIME _____

DATE YOU WILL LEAVE _____ (NEED TO KNOW FOR PLANNING PURPOSES)

HOW WILL YOU ARRIVE? CAR _____ PLANE _____ TRAIN _____ OTHER _____

NAME(S) FOR CONVENTION BADGE: _____

MAKE CHECKS PAYABLE TO YOUR CONVENTION HOST FOR 1994

BEN HOFFMAN
213 SIMMONS ROAD
PERKIOMENVILLE, PA. 18074

PHONE (215) 287-8243

ROOM RESERVATION REQUEST

DEPOSIT: _____

DATE REC'D: _____

ORGANIZATION: _____ JUST FOR OPENERS

FUNCTION DATES: APRIL 28-30, 1994

NAME: _____

ADDRESS: _____

CITY/STATE/ZIP: _____ NO. ROOMS: _____ NO. ADULTS: _____

ARRIVAL _____ / _____ / _____ AT _____ DEPARTURE _____ / _____ / _____ NO. CHILDREN: _____
(DATE) (DATE)

TELEPHONE NO: WORK (_____) _____ HOME (_____) _____

Please guarantee reservation(s) to the following credit card:

(C.C. CO.) (CREDIT CARD NUMBER) (EXP. DATE)**OR** ☐ I have enclosed a deposit check (equal to one night's lodging and 6% tax for each room above) to guarantee the above reservation(s).

COMMENTS: _____

GROUP

SINGLE: \$63.95 DOUBLE: \$63.95

RATES:

TRIPLE: \$63.95 QUAD: \$63.95

ABOVE RATES ARE SUBJECT TO APPLICABLE SALES TAX AT
TIME OF OCCUPANCY.**RESERVATION DEADLINE:****4/14/94**

Reservations not received by this date

will be honored on a "SPACE AND
RATE AVAILABLE" BASIS ONLY.**CHECK IN TIME: 4:00 P.M.****CHECK OUT TIME: 11:00 A.M.****PHONE 215-372-7811****RESERVATIONS 1-800-383-9713**

SEND TO:

THE 
INN AT
READING
=====ATTN: RESERVATIONS DEPT.
1040 PARK ROAD
WYOMISSING (READING), PA 19610

