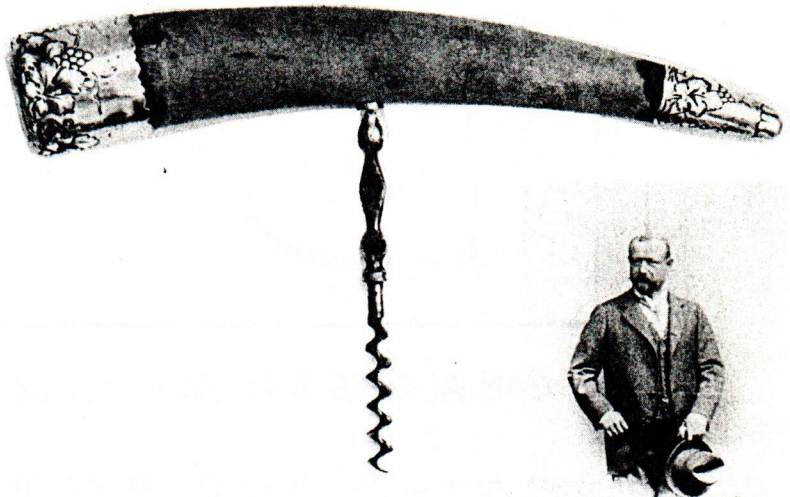
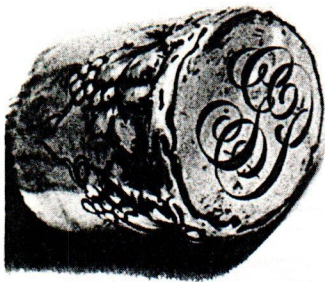


# Just for openers

P.O. BOX 106 TRUMBULL, CONNECTICUT 06611



This is not a beer advertising corkscrew. Therefore, it does not qualify for a Type classification. It does, however, merit some attention as it was the personal property of a brewer. The initials on the large end cap are "G.P." The corkscrew belonged to Gottfried Piel, founder of the Piel Brothers Brewing Company of Brooklyn, New York. Gottfried Piel (in photo) left his home in Dusseldorf, Germany in 1882 at the age of 29 for the United States. In 1883 Gottfried convinced his brothers Michael and Wilhelm to join him in the purchase of the Landser Brewery. The first year's production was 850 barrels of beer and in ensuing years, Piel Bros. grew and grew. It became a Brooklyn tradition and, although the brewery closed after some rough years in the 1960s and 1970s, the brand name is still in use. The Piel name was purchased by the Schaefer Brewing Co. in 1973.

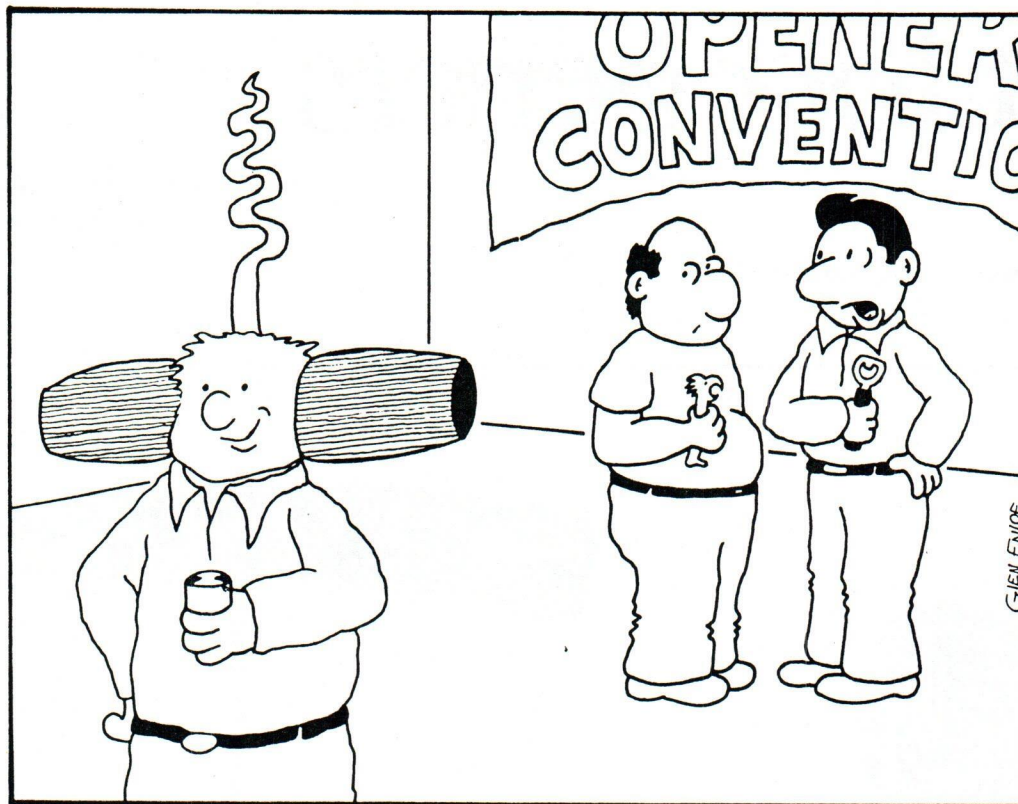
Gottfried Piel died in 1935. The corkscrew was left to his daughter Sophia who had been widowed by first husband Pinckney and remarried to William Peter Dawson. Dawson left the corkscrew to Ohio nephew Jim Lowry in 1980. In 1982 Jim Lowry sold the corkscrew to Don Bull.

X X X X X X X X X X

Deadline for July issue is June 1, 1983. Submit all news, discoveries, classifieds, etc. to:

Donald Bull  
P.O. Box 106 (for UPS: 63 October Lane)  
Trumbull, CT 06611



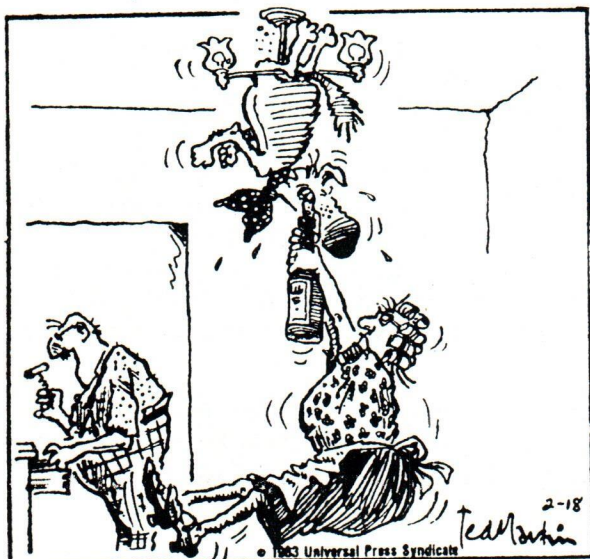


**"YOU CAN ALWAYS TELL WHO THE CORKSCREW COLLECTORS ARE"**

...an original cartoon by Glen Enloe in preparation for the 1983 convention!

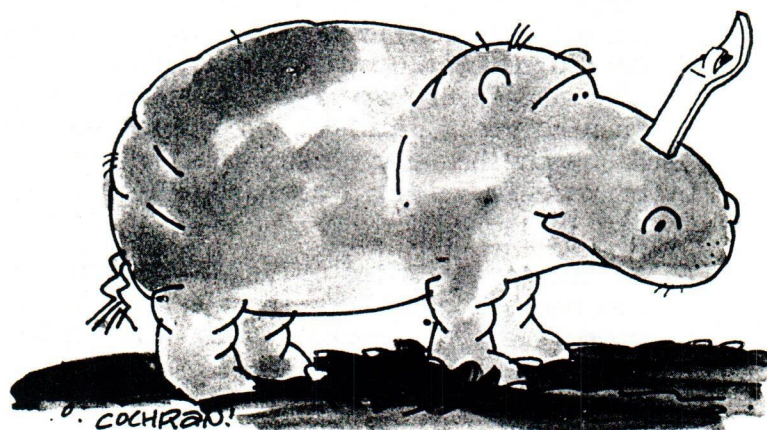
The opener convention will be the weekend of April 23 at the Holiday Inn - Southeast, 5120 Victory Drive, Indianapolis, Indiana. Joe Balaban says early registrations have been pouring in. If you have not as yet signed up, send in your form which was enclosed with the January JFO.

**Pavlov/By Ted Martin**



"Stop looking for the corkscrew, Mother."

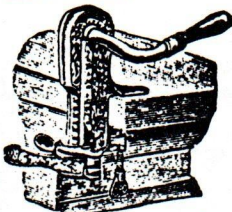
...submitted by Ed Kaye



...submitted by Jack Ford



**Champion Cork Puller.**  
No. 23R1100. Champion Cork Puller, with improved bottle holding clamp. Neat, strong, compact and durable. Operation simple, effective and safe. For use in hotels, barrooms, clubs, restaurants, or wherever a stationary puller can be used. Has been thoroughly tested and is guaranteed to give perfect satisfaction. Weight, 6 pounds. Height above counter when set up, 5 inches. The frame is heavily nickel plated. The worm and other working parts are made of best grade of oil tempered steel and warranted to stand the work. Price, each.... \$2.50



The Champion Cork Puller was featured in the 1902 Sears catalog. See new discovery on page 14!



This rare box match label came to Joe Balaban via his good friend Bob Jones "The Match King." Colors: Red, black and tan. Circa. 1910-1920. Joe wonders if anyone has seen a bottle opener on a match box label???

**KEEP HEALTHY Drink NEUHEILERS Beer**

**OLD FASHIONED THE PERFECT BEER On Draught!**

**When You Think of SALES PROMOTION MATERIAL IN METAL**

Whether your thoughts turn to Signs, Trays, Stands, Bottle Openers or what not - - - think of

**GRAMMES**

Write today for samples or sketches of your ideas.  
NO OBLIGATION  
WHATEVER

**SIGNS**

**SERVING TRAYS**

**METAL COASTERS**

**DISPLAY STANDS**

**BOTTLE OPENERS**

**GRAMMES & SONS, INC. 320 UNION ST. ALLENTOWN, PA.**

Above advertisement submitted by Dick Leon. Take a good look through your collection...are any marked with the Grammes name?

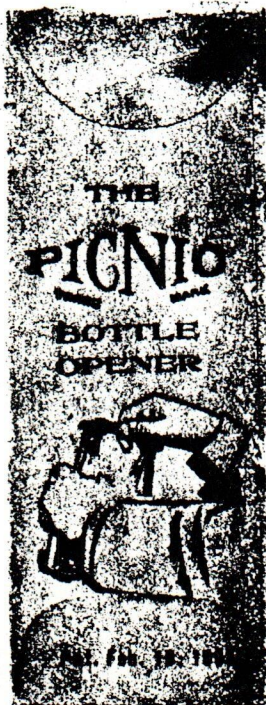
\*\*\*\*\*

Herb Ashendorf's prices realized list for Auction 6 is interesting food for thought for the collector-investor. Some examples:

C-12 #22: \$15	F-6 Canton: \$14	N-11 #2: \$25
A-30 #4: \$30	A-1 #16: \$20	B-39 #1: \$49
F-2 #6: \$20	G-9 Stoney's: \$25	I-7 #41: \$10
E-14 #392: \$3	E-1 #16: \$10	B-6 #3: \$22
M-3 UN Duquesne Brewing Co.: \$57		

Write Herb at 21 Montclair Road, Yonkers, NY 10710.

\*\*\*\*\*



Lynn Geyer recently found this envelope containing a Type B-19 opener marked "Compliments Becker Brewing & Malting Co., Ogden, Utah." Note position of the Prestolite key. The envelope and openers will appear in Lynn's Auction 5. Write Lynn at 1605 No. 7th Ave., Phoenix, AZ 85007.



SOLUTION

SEARCH

FOR

BREWERIANA

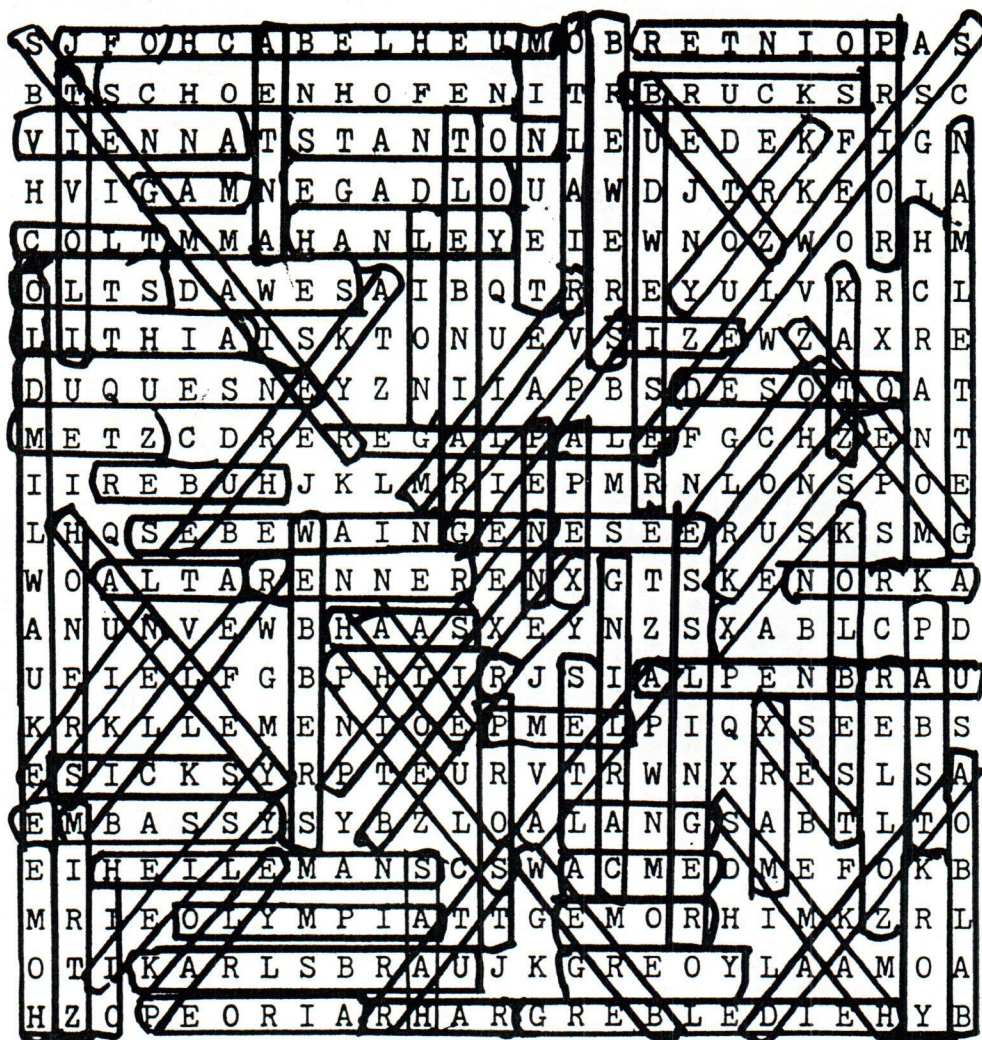
WORDS

CONTEST

PUZZLE

by

Ed Kaye





DISCOVERIES (Types not previously shown in BEER ADVERTISING OPENERS - A PICTORIAL GUIDE, The Price Guide, or "Just for Openers")

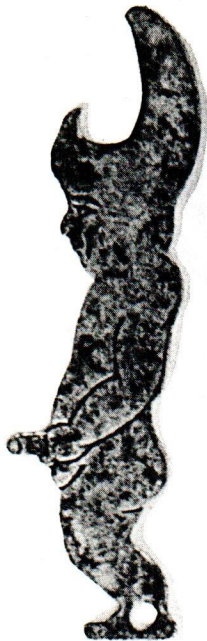
- A-45 Pixie. "If you gotta go, go for City Club, Shorty Billings, Distributor" (Deachman)
- B-51 "Copland's Budweiser / Copland's Pale Ale" (Sherman)
- B-52 "Key to Frank S. Novak Bottled Beers" Compare position of square hole to Type B-19. (Grove)
- C-38 John Wagner Sons Brewing Co. / Pale American. (Brauerer)
- E-25 "Lang's Old German" (Cardone)
- G-23 "Olympia" (McKienzie). Compare to types G-15 - G-18.
- G-24 "Coors Light - Get a Grip" (McKienzie)
- G-25 "Graf's Carbonated Beverage, The Best Since 1873." Combination cap lifter and recapper. Made by B & B, St. Paul, Minn. (Grove)
- F-25 Cap lifter / ice pick similar to type F-19. "Compliments of R.H. Harding, dealer in Berghoff Beer and Long Lake Ice, Both Phones." (Jay)
- F-26 Cap lifter / can opener. "International Malt & Hops Co., 515 Bergenline Ave., Union City, N.J. / Phone Union 7-7541, C.F. Botta, Prop."
- F-27 Cap lifter / ice pick. "The German Brewing Co., Cumberland, Md. / You Choose well when you pick Old German Beer." (Bull)
- M-75 Stainless knife / cap lifter. "Peter Hand" and letter "D" (Jay)
- M-76 Stainless knife / cap lifter / can piercer made in Austria. "Schlitz" (McKienzie)
- N-49 Combination cap lifter/screw driver/prestolite key/cigar cutter. "Pfaff's Beer / Alley's Ale" Marked Patented Oct. 8, '12 and Oct. 7, '13. The 1912 patent was issued to Arthur Merrill of Hartford, Ct and shows a simpler tools without the cigar cutter. Have not yet seen the 1913 patent. (Bull)
- N-50 This type is pictured with and without cap lifter formed on back end of knife blade. Folds as shown. Only "Metz Beer, The Old Reliable" has been found on the combination opener / knife type. (Bull)
- N-51 Combination pencil/cap lifter (much heavier than N-22) made by American Pencil Co., New York and called "Kapoff - Openup." Marked "Fox DeLuxe Beer" (Bull)
- N-52 Knife (single blade) / Cap lifter made by Miller Bros., Meriden, Conn. "Emmerling Brewing Co., Johnstown, 1913" (Bull)
- N-53 Knife/cap lifter. "L Beal, Grain Belt, Slayton, Minn." Marked The Ideal, U.S.A. (McKienzie)
- N-54 Figural bottle cap lifter/knife made by Remington. "Blatz, Milwaukee" (Bull)
- N-55 Figural bottle cap lifter/knife made by Paul A. Henckels, Solingen (Germany). "Dressler's Bremen Beer." From the Bremen Brewery of St. Louis - Ref. #3085 in the REGISTER OF U.S. BREWERIES. (Bull)
- N-56 Knife/opener/file. "Miller High Life." Similar to N-18. (McKienzie)
- N-57 Combination "8 in 1" clipper, opener, etc marked GSI Clipper. "Louis Ruhe, Distributor Leinenkugel's Beer, Eau Claire, Wis." (Brauerer)
- O-10 Wall mount opener. "Drink Citizen's Soft Drinks, Buy better bottled beverages" From Joliet Citizens Brewing Co. (Jay)
- P-55 Blatz, Milwaukee / Fine Table Beers. Very heavy cast bell. (Bull)
- P-56 Brass band marked "St Joseph Brewing Co., St. Joseph, Mo." Handle replaced on corkscrew in photo. (Bull). Much finer example exist. (Van Vactor)



# DISCOVERIES continued

- P-57 Barrel shaped wood handle corkscrew. "Ionia Brewing Co., Erlanger Export"
- P-58 Combination cap lifter / corkscrew (inside key sleeve). Rahr 1847, Malt of Reputation" (Bull)
- P-59 Barrel shaped wood handle corkscrew with solid-cut worm without bell. "Compliments of Wm. J. Lemp, St. Louis, Mo." (McKienzie)
- P-60 Twisted wire corkscrew. "Pabst Beer, Aurora, Ill." (Jay)
- P-61 Twisted wire corkscrew with wood handle. "Coors Golden" (McKienzie)
- P-62 Twisted wire corkscrew with brass sleeve. "Compliments of Stegmaier Brewery, Wilkes-Barre, Pa." Shown with type M-26 for comparison in size. (Bull)
- P-63 Combination corkscrew / cap lifter which threads into sleeve marked No. 19Y Corkscrew & Bottle Opener (sample?). "For General Satisfaction as to your individual taste - Drink Gerst's Gold Medal Beer" (Jay)
- P-64 Bar mount corkscrew. "Theo. Hamm Brewing Co., St. Paul, Minn." Marked Champion, Pat. Sept. 7, 1897 (Michael Redlinger No. 589,574) and Des. Pat. Jun. 9, 1896 (Redlinger No. 25,607). Manufactured by Arcade Manufacturing Co. of Freeport, Illinois. (Bull)
- P-65 Figural bottle cap lifter / corkscrew / knife. "Hamm's Beer Leads Them All. Is Everybody Happy? / Edw. F. Miller, 200 South Frederick St., Oelwein, Iowa." Made by Griffon Cutlery Works, Germany. (Bull)
- P-66 Combination corkscrew / cap lifter / knife made by Camilius Cutlery Co., Camilius, N.Y. "Blatz Milwaukee / Arcade Casper" Compare to type P-14. (Grove)
- Q-4 A variation of the Coors plastic "can" opener shown in the price guide for depressing a different type of tab. Both shown here with can lids. (McKienzie)
- Q-5 "Top Popper" for can tabs as illustrated. Molded in a variety of colors and noted with "Hamm's, Coors Light, Miller High Life Beer, Oly, Coors, Schlitz, Michelob, Budweiser King of Beers, Lone Star Beer" Set of 8 of these is offered by Del Haarberg for \$12.00. (Haarberg)
- Q-6 Another tab lifter. Noted with "Hudepohl Beer" and "Hudy Delight Beer" (Kaye)
- Q-7 Plastic "Beer Twist" for twist off caps manufactured by Mega Manufacturing, P.O. Box 9051, San Diego, CA 92109. Noted: "Erlanger Classic 1893 Beer, Old Milwaukee Beer, Old Milwaukee Light, and Schlitz Malt Liquor" (Braeuner)
- Q-8 "Christian Moerlein, Cincinnati Select Beer" (Kaye)
- Q-9 "Magigrip" a useful household utensil for many uses including removal of bottle caps - and now... with a beer adv. "Reading Brewing Company, Reading, PA., Reach for Reading Premium, The Friendly beer for modern people" (Reed)
- R-9 Baseball cap base mounted opener made by Loyal Products, New York City. "Rheingold, 1963 Award" (Award for what?) Red on white. (Bull)
- R-10 Dog. "Sunshine Beer / Bob Anderson" (A sales rep?) Cast brass opener. Design Patent #79,877 granted to M.D. Avillar of New York Nov. 12, 1929. (Bull)
- R-11 Parrot cap lifter / corkscrew. "Harvard Export Beer Ale" Design Patent #78,554 (without corkscrew) granted to M.D. Avillar May 21, 1929. Cast and chrome plated by Negbauer, New York. (Fehr)





A-45



B-51



B-52



C-38



E-25



G-23



G-25

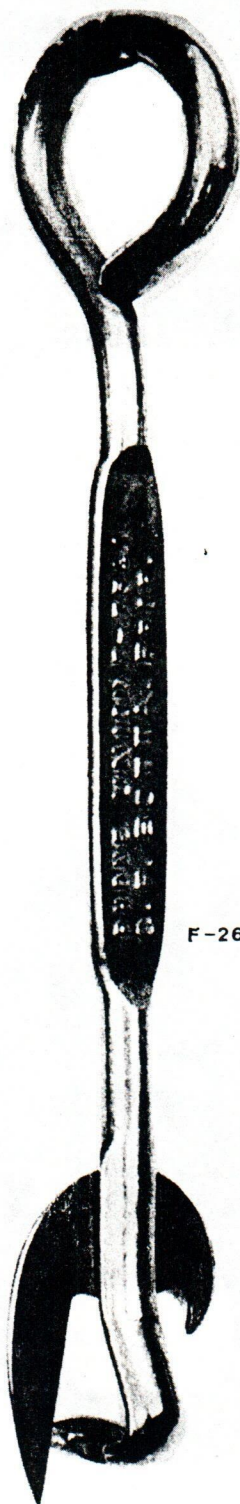
G-24







F-25

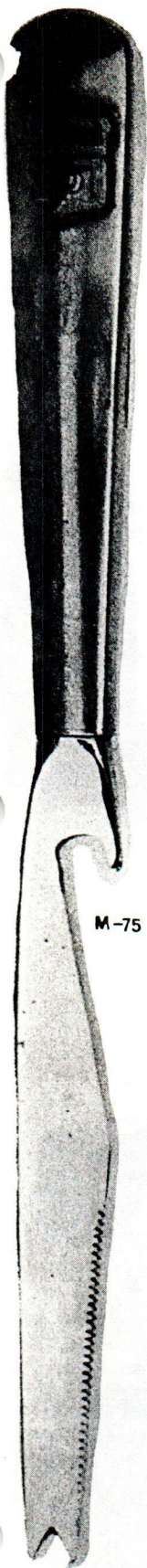


F-26

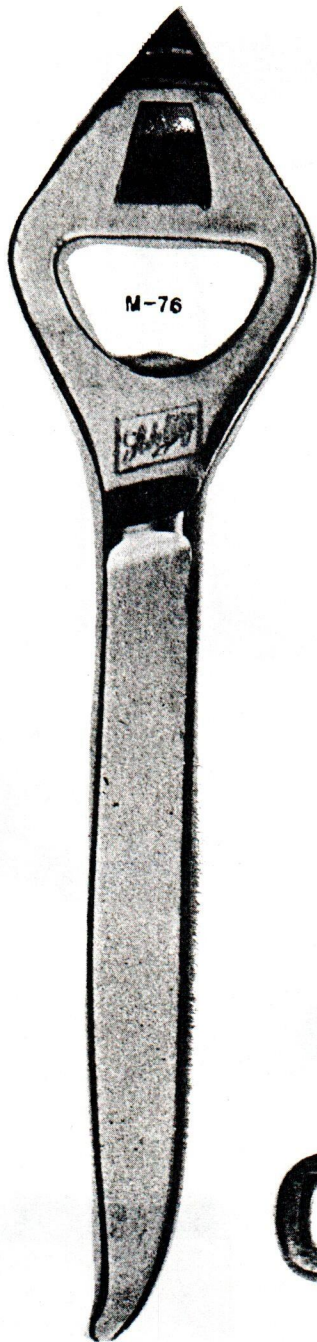


F-27

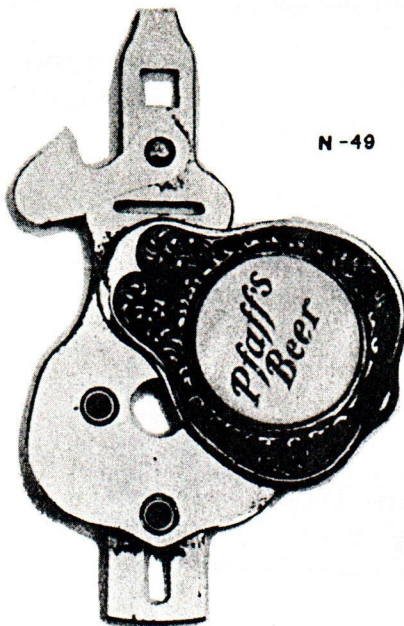




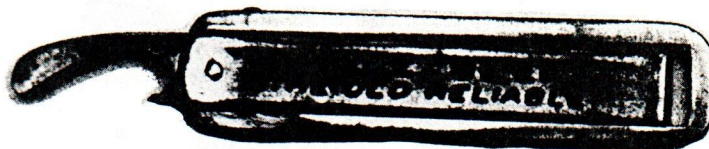
M-75



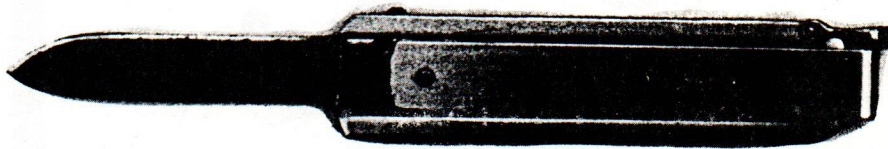
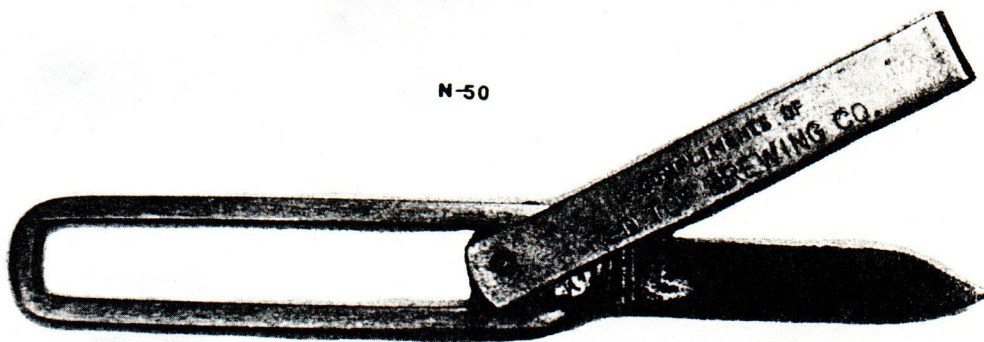
M-76



N-49



N-50



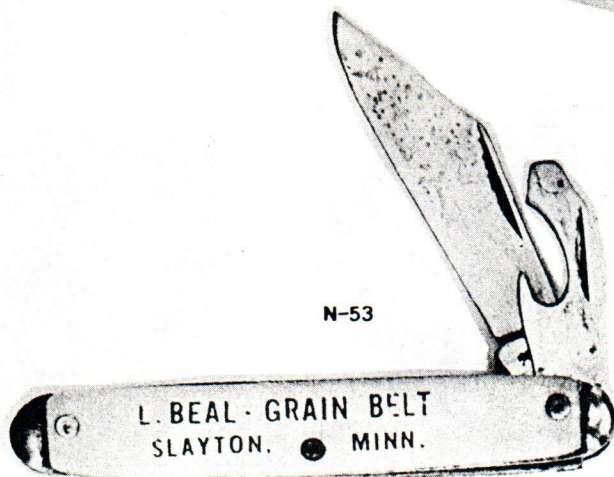
FOX DE LUXE BEER

N-51

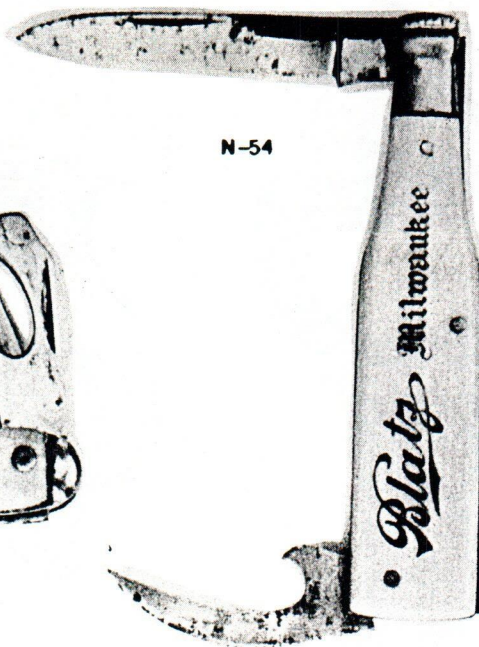




N-52



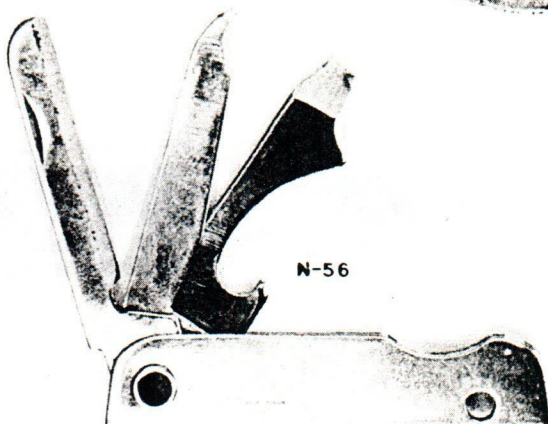
N-53



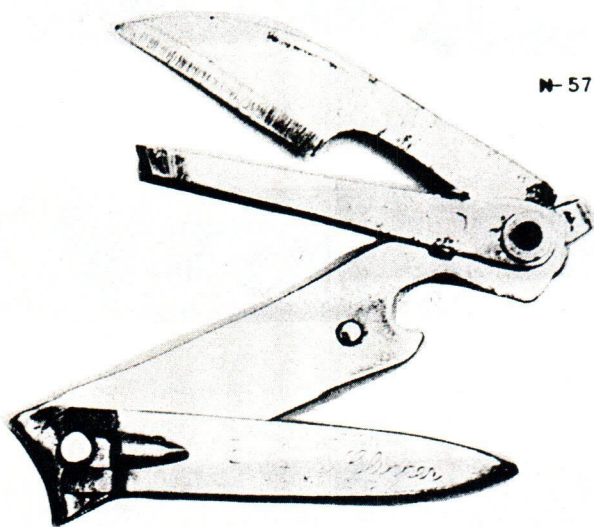
N-54



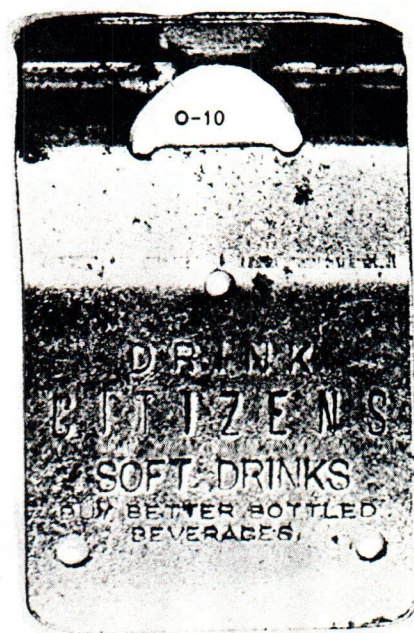
N-55



N-56

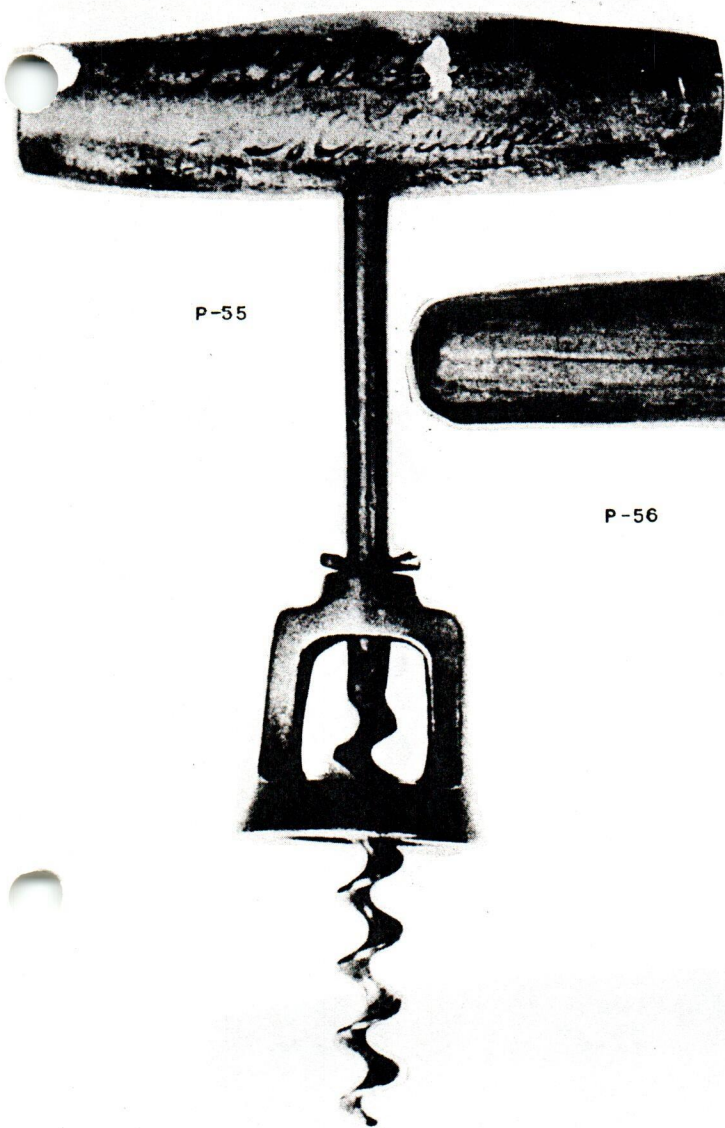


N-57

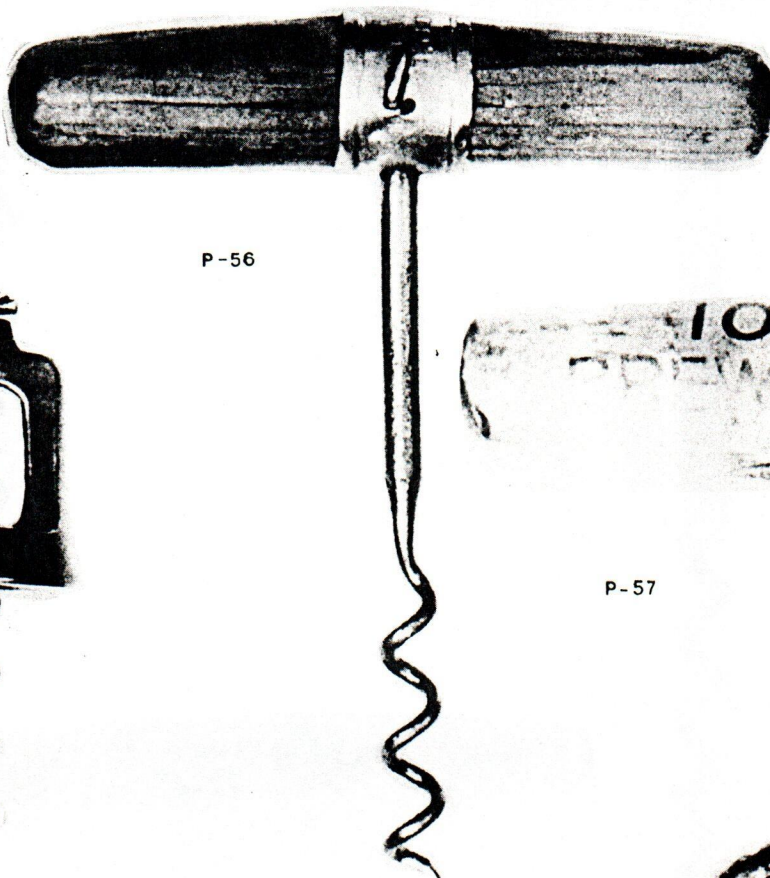


O-10

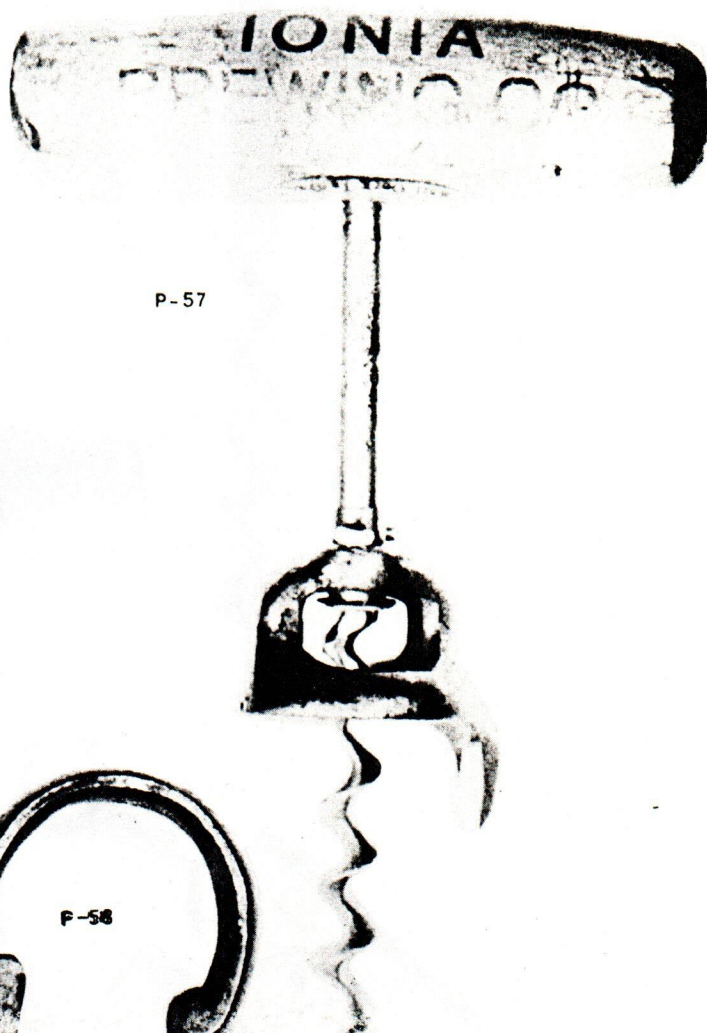




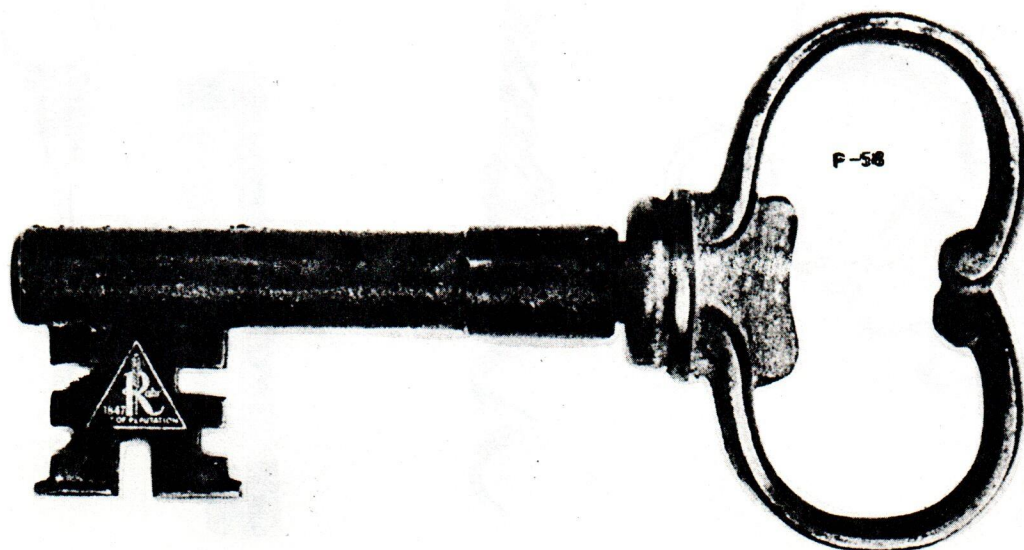
P-55



P-56

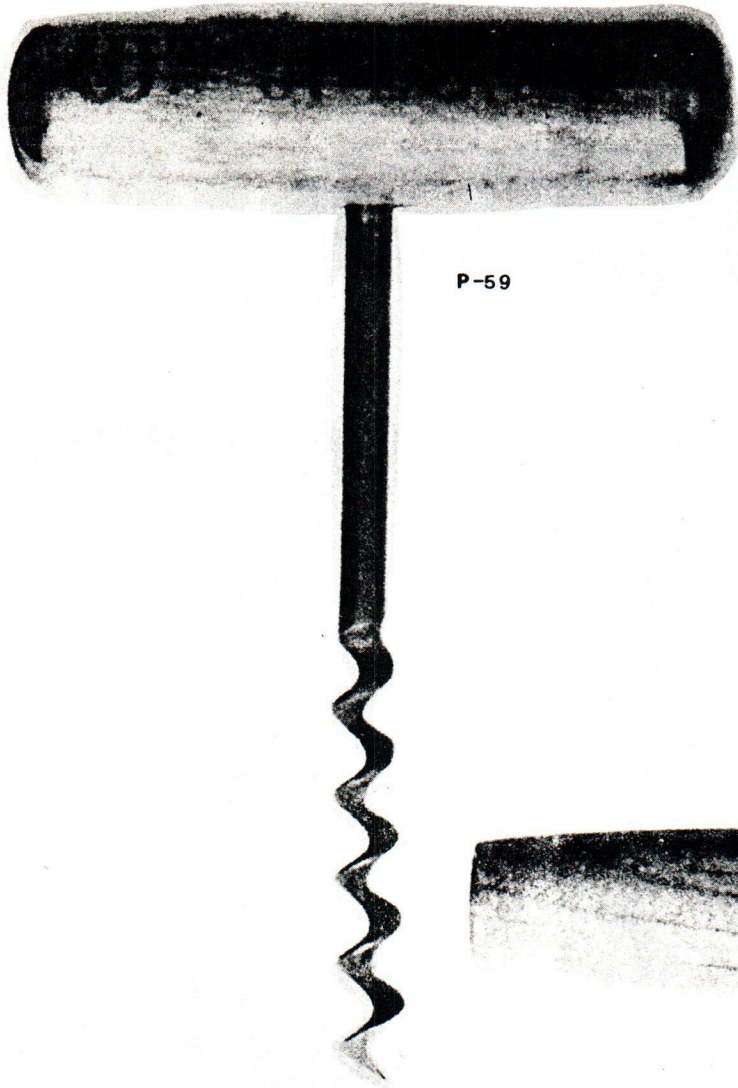


P-57

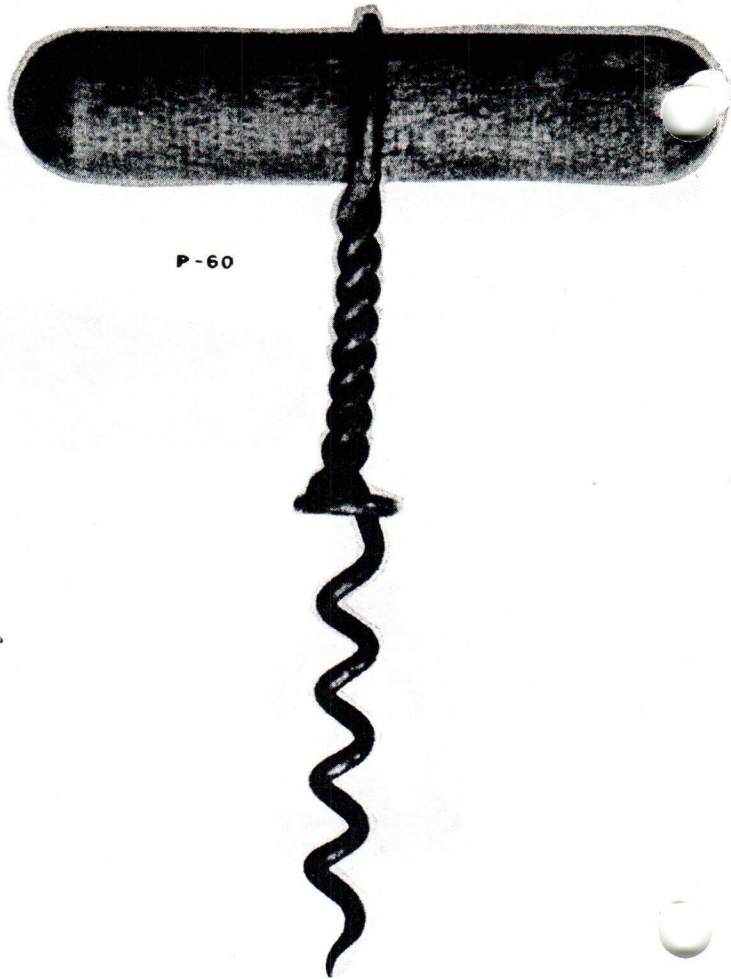


P-58

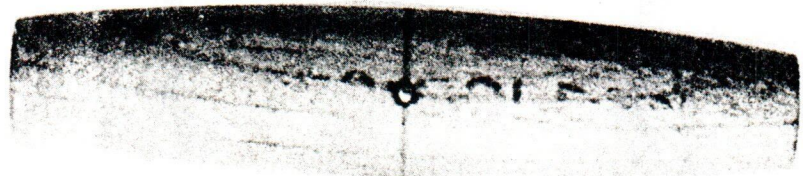




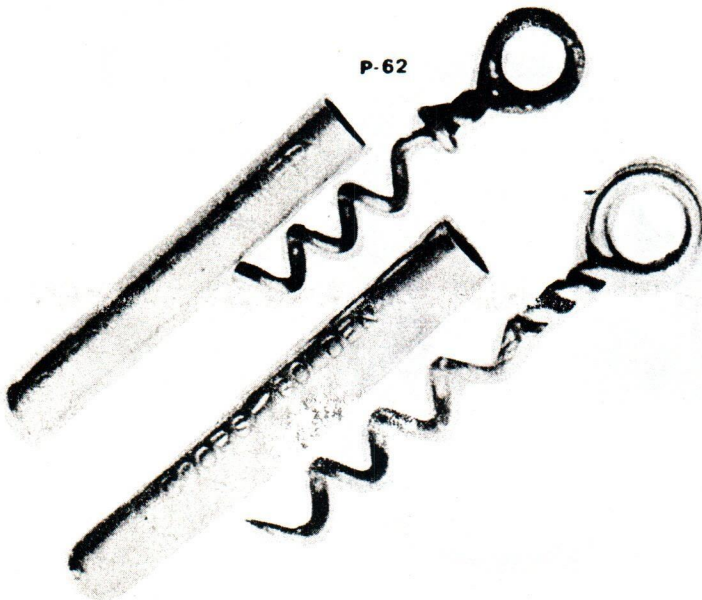
P-59



P-60



P-61



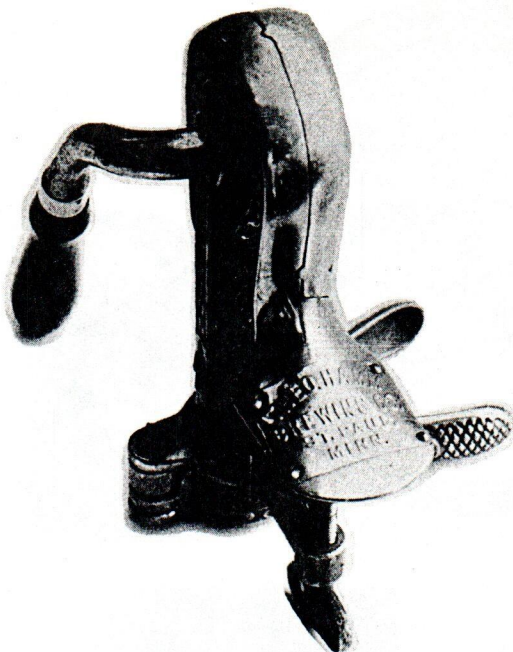
P-62



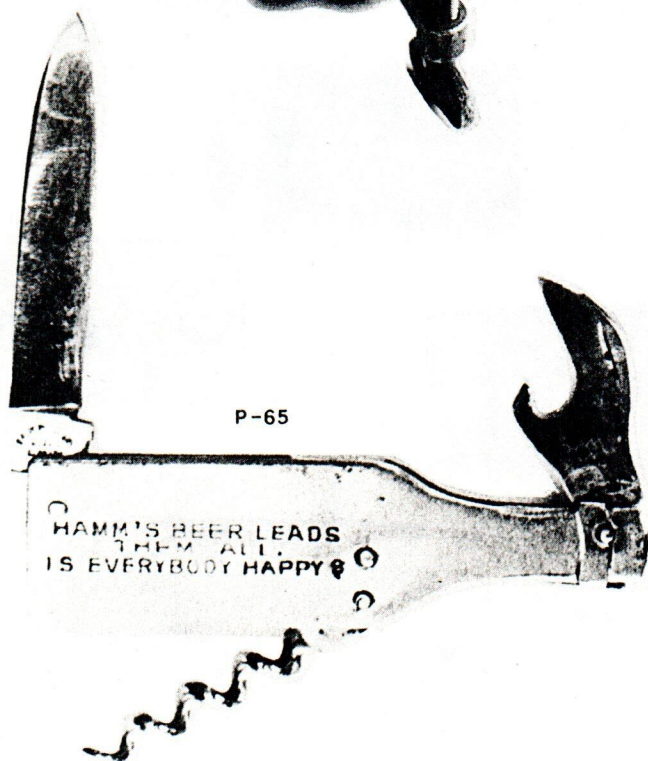
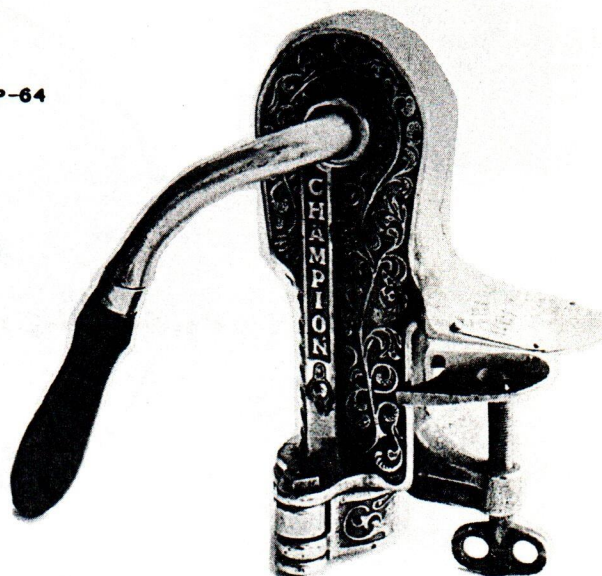
P-63



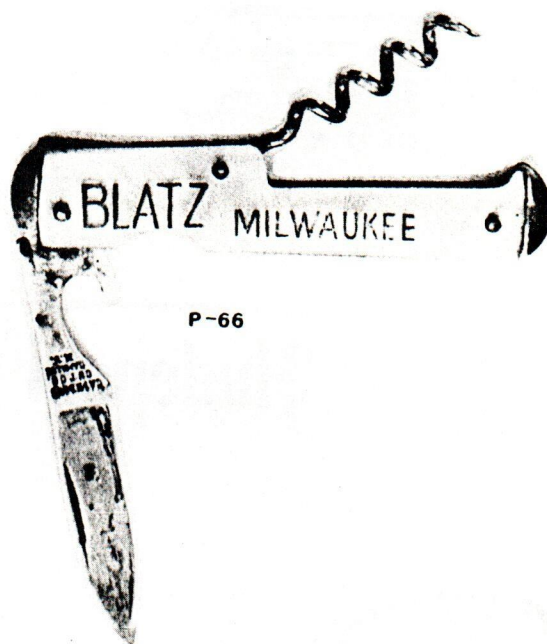




P-64

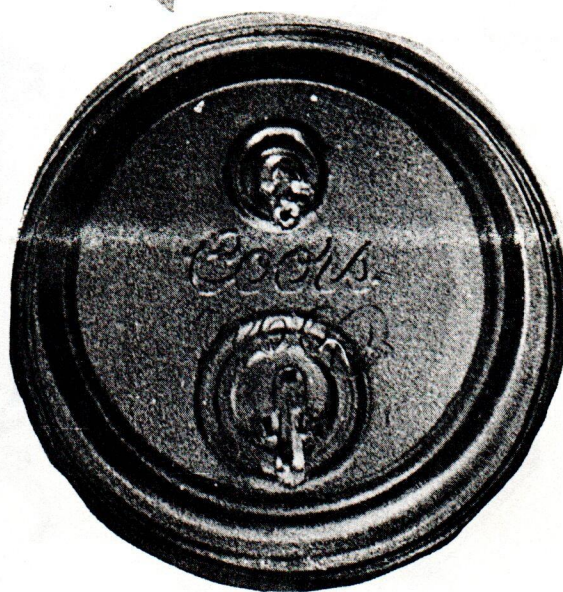
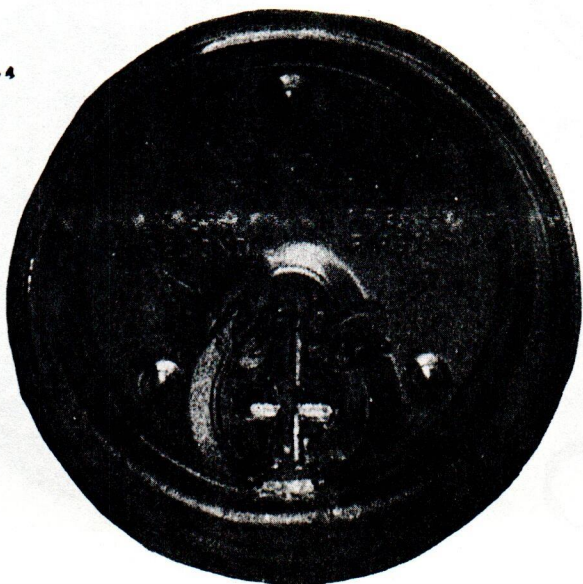


P-65

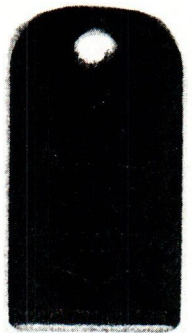
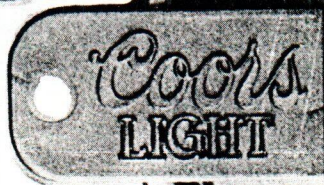


P-66

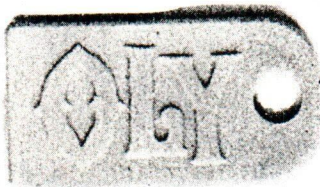
Q-4







Q-5



**Hudepohl**  
Beer

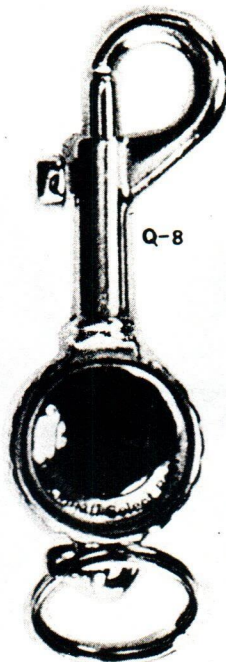
Q-6



Q-7



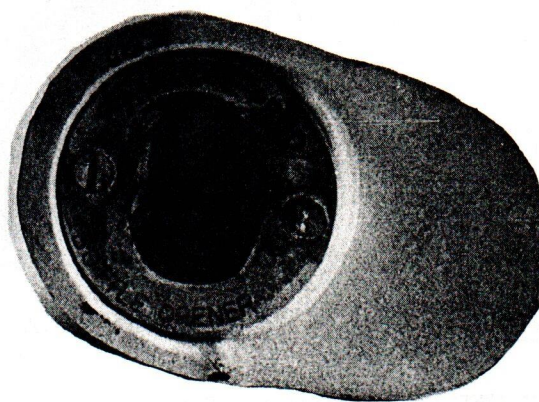
Q-8



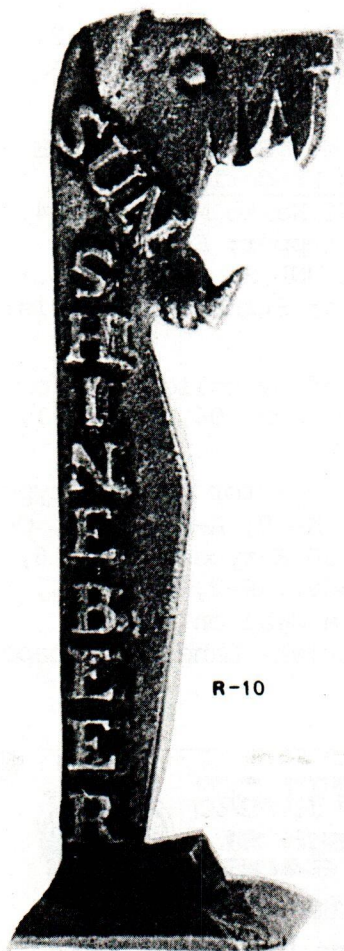
Q-9



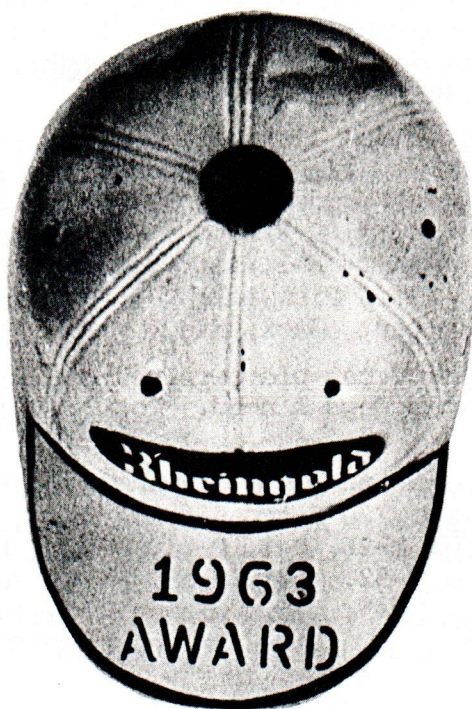




R-9

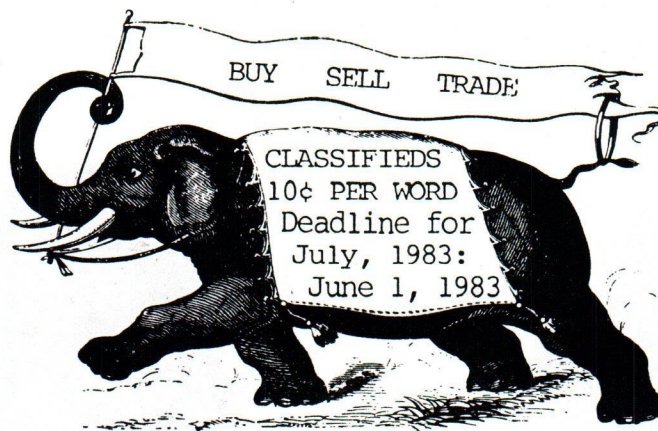


R-10



R-11





- WANTED - Type F openers needed by Addict. Buy, trade, anything! Beebe, Rt 7, Tucson, AZ 85747
- WANTED - Openers / corkscrews with ornate handles of sterling - pewter - cast iron - etc. of figural or pattern design. M-47, M-48, M-56 for example. Also any Volstead types. Tom Morrison, 2930 Squaw Valley Dr., Colorado Springs, CO 80918
- SELL - Breweriana coaster, trays, openers, etc. SASE for list. David Bunk, RD2, Box 268, Windber, PA 15963
- WANTED - Old Pennsylvania wire hoop beer openers. I know these openers are out there somewhere. HELP! E-1 Boyertown, Star, E-2 Yuengling, E-3 Boyertown, Lion Standard, Wacker, Kaier's, E-4 Black Eagle, Bushkill, Seitz, Yuengling, Chester, Esslinger, Neustadt, E-6 Chester, Deppen, Uniontown, E-8 Stegmaier, E-9 Seitz, Columbia, E-11 Straub's, E-12 Sprenger, Mt. Carmel, E-14 Brackenridge, Boyertown, Helb's, Greensburg, Union, E-21 Moul's. Will buy or trade. Anthony Zanghi, 605 Leithsville Rd., Hellertown, PA 18055
- SELL - The following is a partial list of openers for sale. Send large SASE for complete listing and figural sketches to: Ray Frederick, 9801 Dahlia Ave., Palm Beach Gardens, FL 33410. A-3 UNL Kasko Malt; B-24 #25 Narragansett; C-13 #109 Stanton; C-19 #7 Old Topper; E-14 #515 Kamm's; E-4 #20 Centliver; E-1 #11 Mt. Carbon; F-5 UNL Stone Malt Co.; G-9 #19 Schreiber; M-1 #3 Pickwick; R-3 #3 Iroquois; Stand up figurals: Parrots, Donkey, Elephant, Jack, Etc.
- TRADE - Will trade cap lifter / can piercers you need out of my collection for beer advertising corkscrews I need. Don Bull, P.O. Box 106, Trumbull, CT 06611
- TRADE - I will trade E-types in the quantity shown (my choice) for one the type listed with corkscrew: 20 E-types for A-21, A-28, A-29, A-34, A-36, C-26, F-8, H-4, H-10, N-10, M-26, P-1, P-11, P-5, P-7. 30 E-types for F-16, G-10, L-2, L-6, M-3, M-52, M-21, M-19, P-1 (with adv), P-2, P-3, P-4, P-29. 50 E-types for N-5, N-6. Please write for a deal on types P-25, P-26, P-34 or P-30. Joe Balaban, 8305 Christiana Lane, Indianapolis, IN 46256

**BEER OPENERS  
ADVERTISING**

**Collectors**

**DEL & BEV HAARBERG**  
15562 EL CAPITAN  
DELHI, CALIF. 95315  
1-209-634-8096

**FIGURALS**

ANTIQUES

ENGINES

**GLENN ENLOE**  
10530 E. 9th St.  
Indep. Mo. 64053  
833-0317  
Specializing In  
**Cigar Box Openers  
& Clippers**

