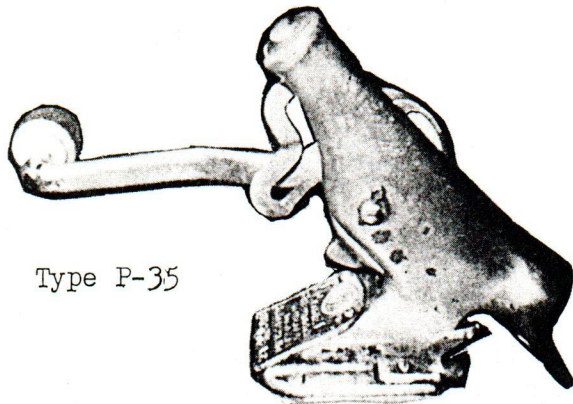


Just for openers

JAN., 1981

NO. 9

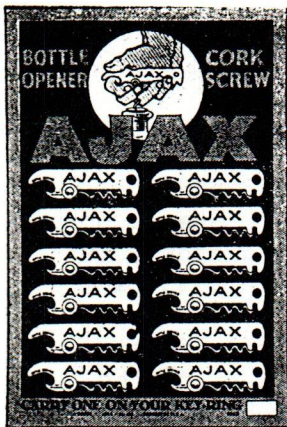
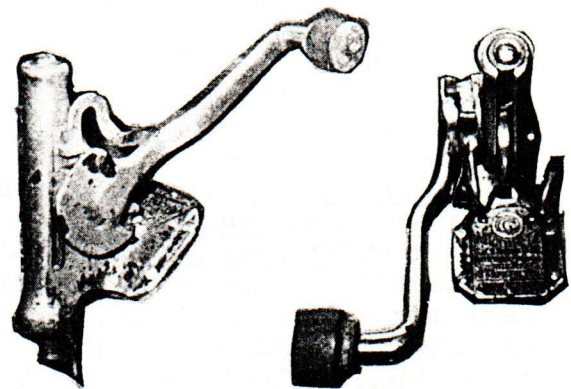
P.O. BOX 106 TRUMBULL, CONNECTICUT 06611



Type P-35

Remember the type P-30 bar mounted corkscrew on the first page of issue #8? Here's another bar mount - Type P-35. This one was discovered by Bob VanVactor. To operate: insert bottle under screw and pull handle toward you. The screw penetrates the cork when the handle is half way; continue to pull and the cork is extracted. Also equipped with cap remover.

The plate which faces the customer is marked: "M. K. Goetz Brewing Co., Brewers & Bottlers, St. Joseph, Mo., Quick & Easy." Inside of handle is marked: "1897 Style." The corkscrew is cast and plated with chrome.

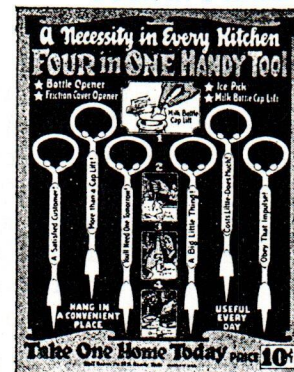


Several JFO subscribers have come up with type B-35 with "Ajax" on it and asked if this is a beer ad. No. It was a trade name for marketing. On the left is the ad. The price is below. 57¢ per dozen!!! (The type B-13 marked "Nifty" was the Vaughan Novelty Mfg. Co. trade name.)

COMBINATION CORK SCREW AND BOTTLE OPENER.

Highly nickel plated. Can be carried on key ring. No. 132. Price \$0.57 per dozen or \$6.50 per gross. Packed 1 dozen on display card.

FOUR IN 1 HANDY TOOL. Type F-6



Highly nickel plated consists of bottle opener, friction cover opener, ice pick and milk bottle cap lift. Standard size 6 in. Necessity in every kitchen. No. 52D. Price, \$0.60 per dozen or \$6.85 per gross. Packed 6 on display card.

Ads shown here are from the 1928 Chas. Weiland, Inc. catalog. - Importers and factory representatives in New York for the Hardware, Automobile, and Housefurnishings trade.

News deadline for April, 1981 issue is March 1, 1981.

Copyright © 1980 by Donald Bull

Send news, want ads, etc. to:
Don Bull
63 October Lane
Trumbull, CT 06611

THE THIRD ANNUAL OPENER CONVENTION is going to sneak up on you and pass you by if you don't stop and look at your calender and make plans now. The dates are April 24 and 25. If you missed last year's convention, you probably felt very bad when you heard how much it was enjoyed by those who attended. If you miss this year's convention, you will just have to start feeling bad all over again! Life is to be enjoyed. Splurge! Get your ticket, pack your bags and your openers, and let's all meet in St. Louis.

There is a convention form enclosed with this newsletter. Fill it out and mail it with your check for \$10.00 to Bob Chapman. The \$10.00 is to defray cost of beer, soda, promotion, room rentals, and all those things that contribute to the success of such an event. Cheap fun! Bob Chapman has been working hard to get this thing going and all indications are it will be a smashing success. Help Bob out by giving notice of your intent to attend as soon as you possibly can. Bob is excited. His last note indicated 22 early registrants with the following states represented: MO, IL, OH, WI, CA, MI, IN, MN, and CT.

Assisting Bob in the planning are Art Santen, Ollie Hibbeler, and John Goff. Art is ready. He recently wrote and said his total number of openers (all types) hit the 6,571 mark, and...IN ADDITION...he has 3,031 duplicates for trade...they'll be at the convention...will you?

Letter to ECBA and NABA members, JFO subscribers from Leon Beebe:

Greetings to all from Arizona - Freia, the kids, the collections and I all made it to Arizona with only negligible damage. It had been suggested that the only reason we moved to Arizona was to reduce the humidity and lessen the rust damage to my openers (F-2's). This is not true. I was also worried about rust damage to the trays. The glasses and mugs don't care - although we do have to protect them from blowing sand. Stop laughing, blowing sand is a real problem out here in the desert, 20 miles south of Tucson. Seriously though - we love it out here.

In Arizona, no one club is strong enough to host a proper trade session. Consequently, on Feb. 28, 1981, Freia and I plan to host a combination open house and trade session. All ECBA, NABA, and JFO members are invited. Details will be mailed to everyone who writes me and asks for them. This will help keep costs down. When you write, please let me know how many persons in your group, how many tables you will require, and if you will require a motel.....Happy Collecting.....Leon Beebe, Rt. 7, 601 E. Macon Drive, Tucson, AZ 85706

NO REQUIEM FOR THE CHURCH KEY by Mary Garatti (as submitted for her English composition course at Sonoma State University in Rohnert Park, Calif.)

With the advent of the flip-top can and the twist-off cap, America has sounded taps for the church key.

Approximately two years ago when I originally began checking and adding motor oil myself, I became aware of something missing: the bottle opener, commonly called the church key. A quart of low-40 can be poured without a spout, but only with the aid of that precise tool. A tool increasingly difficult to find in the kitchen drawer these days.

A greasy slick crossed my mind, without a can top-popper, no more do-it myself oil. Immediately I wiped the sludge from my thoughts and went to the corner grocery store to ask for an opener. I was told I could purchase one from the selection hanging on the wall. Purchase one! I wanted to be given one, free, no money exchange involved. The clerk informed me, none too patiently, that nothing is free anymore.

With this additional problem to contemplate, I went home, determined to find an old, free bottle opener. At this point, I had forgotten about the oil, my car, everything except my quest for the elusive free opener.

I was searching through every drawer in the house, began working up a thirst, and reached into the refrigerator for a cold drink. I grabbed a beer, flipped back the tab, and gulped down the contents. That explained things. I flipped the

NO REQUIEM...(cont. from prec. page)

top, no need to pop a hole nor pry off a cap. No need for a bottle opener with twist caps and flip-top cans.

I found my prey, buried under some old brushes in the paint cabinet. The last time the rusty old thing was needed, it was used to remove a paint can lid.

Since that revelation two years ago, I haven't stopped looking for church keys. They are found in fishing tackle boxes, flea markets, thrift stores, and most assuredly in antique shops. The small, often free tool that had been a necessity for decades has now become a collector's item.

I wonder about other items that have quietly succumbed to progress. What ever became of the Mason jar, cedar chest, television antenna, flour scale, ice pick....?

.....Thank you, Mary, for sharing your collection beginnings with us...anyone else have a story about how a collection was begun?....

Gene Appel and his fine opener collection were featured in the October 19, 1980 issue of the Antelope Valley Television News (Palmdale, CA). Gene says his extensive collection was made possible with the help of many friends in Palmdale and in other cities throughout the U.S. During the month of November, Gene's collection was on display at the Palmdale Library.

In issue #8 we asked if anyone had a C-22 Molson. Fern Reeves does have one. It is marked "Molson's" on each side with an anchor to the left above the band. There was no response to the questions regarding "Neufang" and "Cham-Pay."

BUY - SELL - TRADE (10¢ per word - deadline for issue #10 is March 1, 1981.)

BEER ITEMS FOR SALE - 10 different openers for \$7.50 ppd. List of 100 plus, starting at 25¢ for 25¢. Other lists for 25¢ each: knobs, trays, coasters, mini-bottles. Jantos, 7025 Kevin, Bethel Park, PA 15102

WANT ADS: Have you considered running an ad in this section? Something special you're looking for? Advertise for it.

On Sept. 22, 1931 a design patent (#85,178) was issued to Thomas Harding of Newark, N.J. for an "ornamental design for a beverage spoon or similar article, as shown." A type F-2 is shown. The patent was assigned to the J.L. Sommer Manufacturing Company, a Corporation of New Jersey.

Ed Kaye points out that the J-5b opener on page 8 of issue #8 should have been listed as a soft top (ST). In addition, Ed has come up with the following variations: J-5b - Vaughan, 4" x 3/4", yes, HT, N/A S; J-1a - Walden, 3 3/16" x 5/8", yes, HT, N/A, S; J-1b unmarked, 3 1/16" x 9/16", yes, ST, N/A, S; I-13e - Vaughan, 3 7/8" x 5/8", yes, HT, SP, R; I-13f - Vaughan, 3 7/8" x 5/8", yes, ST, SP, R; I-13f - G.G. Greene, 3 7/8" x 5/8", yes, ST, SP R. (Obviously, we could all come up with an endless number of variations on each type of opener.... we should, as I have previously advocated, stick to variations of significance... the sampling presented in issue 8 helped point out the absurdity of carrying the variation search too far and what confusion it could cause.....DB)

In Joe Cardone's 4th opener mail auction 115 lots were sold for a total of \$447.18 or 3.86 average per opener. Tops was A-9 #3 at \$29.86 followed by N-11 #1 at 17.76. Herb Ashendorf's Brau Haus Auction #4 will be out in early January offering about 300 lots including a lot of fine A & B Types and some new discoveries. In addition a fine line of all sorts of breweriana will be offered.

Barry Weston has over 400 "D Types" from all over the world - more on this fascinating collection in an upcoming issue.

DISCOVERIES (Types not previously shown in BEER ADVERTISING OPENERS - A PICTORIAL GUIDE or in JUST FOR OPENERS)

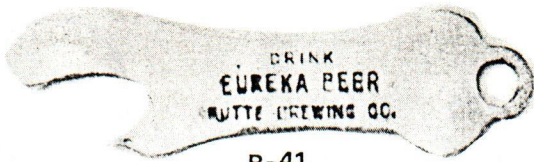
- A-40 "Inland Beer" High relief brass. Marked on reverse: Copyright "1913 Braun & Co., Sept. Morn." (Bull)
- B-41 "Drink Eureka Beer, Butte Brewing Co." Larger than B-14
- E-4c "Wayne Brg. Co., Erie, Pa. / Wayne Brew" Screwdriver tip. (Snyder)
- E-24 "Compliments of John Wieland Brewery, San Francisco" Wooden handle. Black lettering on yellow. (McKienzie)
- F-20 "Storz" on end like branding iron. "Enjoy its Bitter-Free Flavor/Your Favorite Brand" on handle. Made by Vaughan, Chicago. (McKienzie)
- F-21 "Drink Walter's Beer, Midwest Distributing Co., Salt Lake City, Utah" Opener, spoon, corkscrew combination. (McKienzie)
- G-15, 16 and 17 were found by Don Bull in a downtown Denver souvenir shop while attending the NABA convention in August, 1980. They were \$2.49 each.
- G-15 "Coors"
- G-16 "Bud, The King of Beers"
- G-17 "Oly Beer"
- G-18 "Coors" (Lohmiller)
- G-19 "Bartholomay Rienze Beer, In Bottles Only" Combination cap lifter and bottle stopper. Manufactured by Ryede Specialty Works. (Fouch)
- G-20 "Strohs" Recent, copper colored. Made by Century, Canada. (Fouch)
- G-21 "Just a little better, Old Heidelberg Beer, Phone 631, Mason City" Curved like bottle (Bull)
- G-22 "Fort Pitt Special Beer" Narrower and longer than G-8.
- I-26 "Hampden Beer-Ale" Ribbed opener. Marked on reverse: "Campello Opener, Mass." (Bull)
- M-58 "Miller / High Life" Brass plated cast iron opener. (McKienzie)
- M-59 "Tru Seal, Flick-Reedy Corp. Miller (Logo)" Combination opener/muddler. A. Conrad, VP of Flick-Reedy searched his files and was unable to provide any information on this "Opener." (McKienzie)
- M-60 "Stag Beer / Valmeyer Hotel, Valmeyer, Illinois." (McKienzie)
- N-38 "Leinenkugel's Beer / Jacob Leinenkugel Brewing Co., Chippewa Falls, Wis." Combination opener and nail clipper marked "Master clipper, GSI (in circle), U.S. Pat. Pend." (Murphy)
- N-39 "L.A. Dick Co., Grain Belt Beer" Stainless knife and fork with opener slide together in plastic handles for storage. (McKienzie)
- P-31 "Washington Brewery Co., Sparkling Ale" marked on wooden sleeve. Cap lifter with wire breaker and corkscrew. (Bull)
- P-32 "Saginaw Brewing Co., Saginaw, Mich. / Waldbrau" (Fouch)
- P-33 (Not actual size) "Standard's Nine Months Old beer, tru-age, Old Phone 6600, New Phone 468-K" Cap lifter with wire breaker has corkscrew which inserts into wooden sleeve with ice pick. 10 3/4" (Lothridge)
- P-34 "Schlitz Beer / The Beer that made Milwaukee Famous" Corkscrew, knife, wire breaker. Mother of pearl handles. Made by Wester Bros., Solingen. (Kaye, McKienzie)
- P-35 "M.K. Goetz Brewing Co., Brewers & Bottlers, St. Joseph, MO., Quick & Easy - 1897 Style" (Pictured on page 1) (VanVactor)
- Q-3 "Light Olympia Beer, Olympia Brewing Co., Olympia, Wash., U.S.A." White plastic with gold lettering, metal piece with opener attached to plastic with screws. (McKienzie)

If you have a previously unreported Beer Advertising Opener, let's assign a type number to it. The "discoveries" deadline for the April, 1981 issue is March 1, 1981. If you have a discovery, do one of the following:

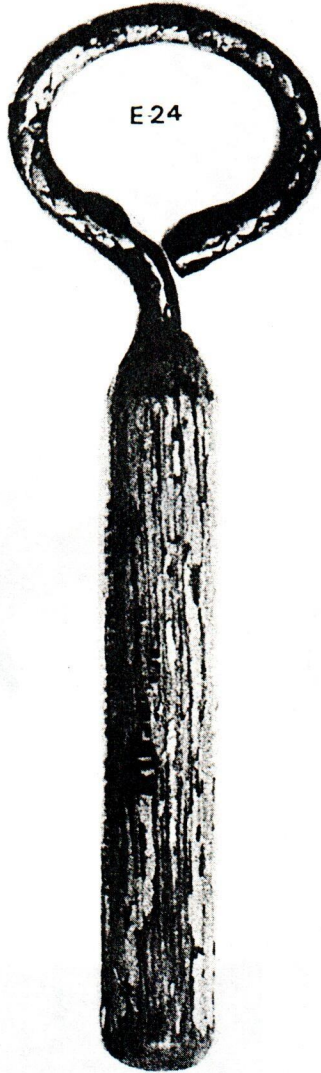
1. Send the opener on loan for photographing.
 2. Send a black and white photo of the opener in actual size with complete description - words and marks on both sides.
 - .or...3. Send a black and white negative of the opener with a tracing and complete description including exact dimensions.
- ...send to.....Don Bull, 63 October Lane, Trumbull, CT 06611



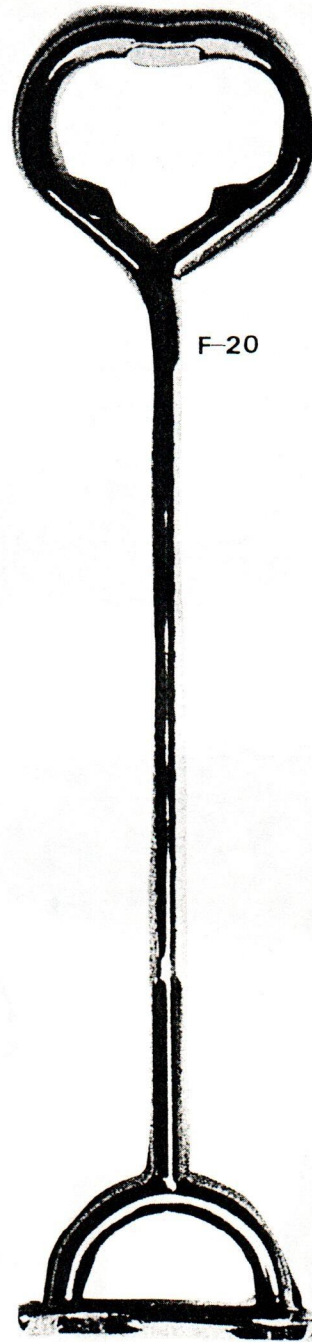
A-40



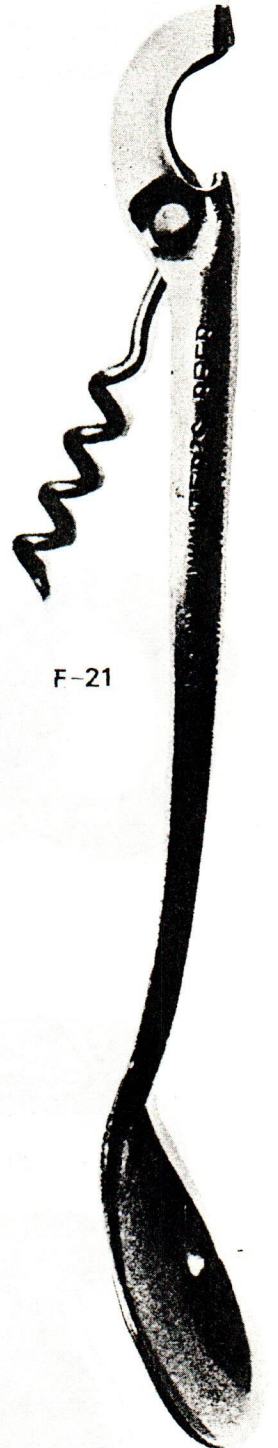
B-41



E-24



F-20

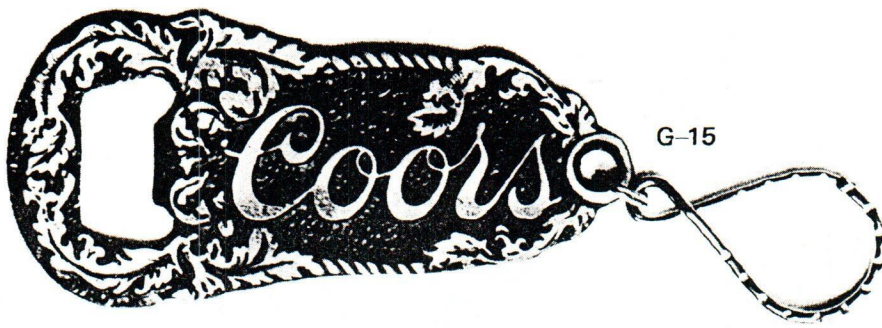


F-21

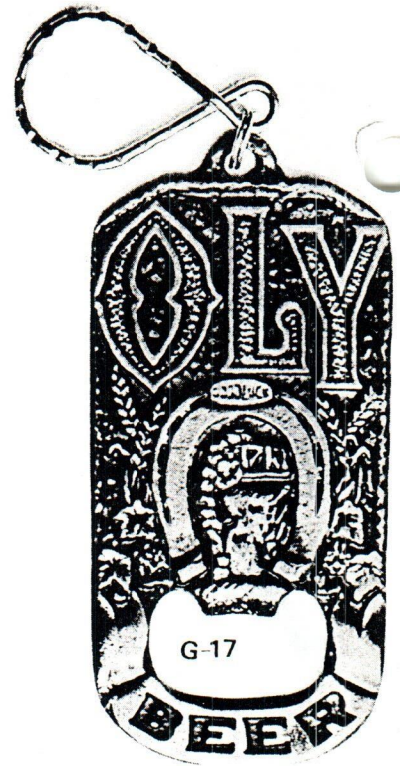


E-4C

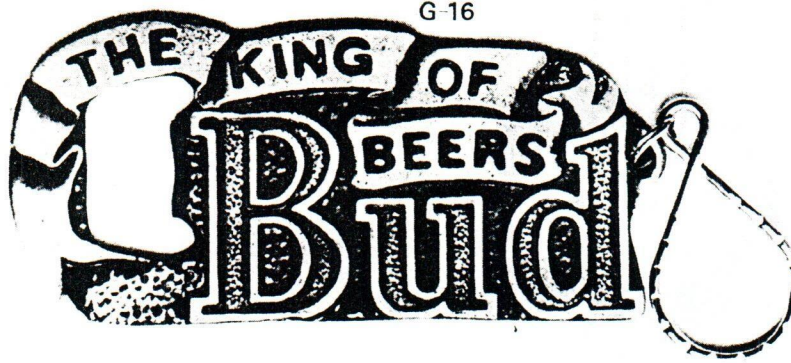




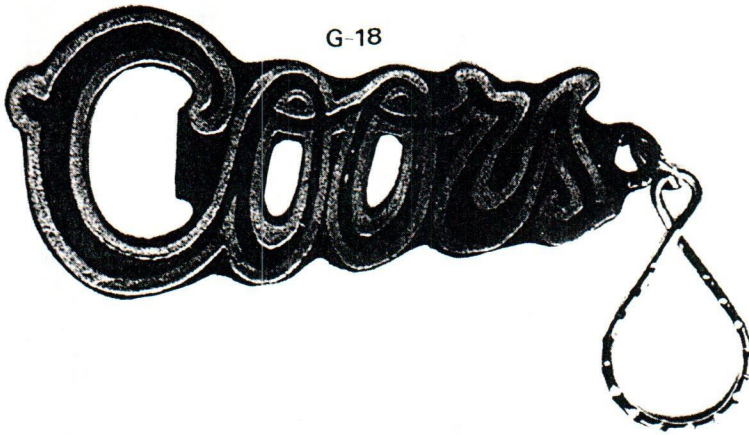
G-15



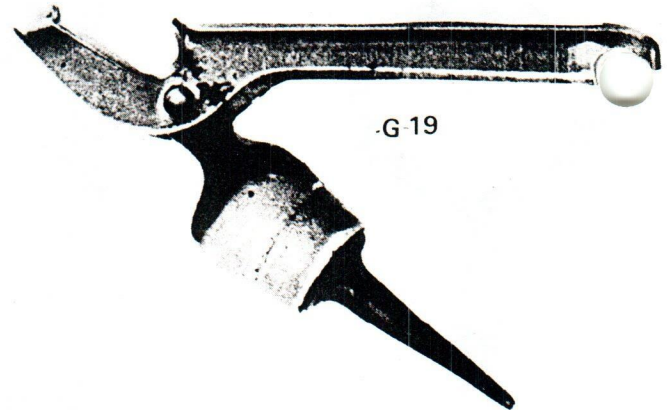
G-17



G-16



G-18



G-19



G-20



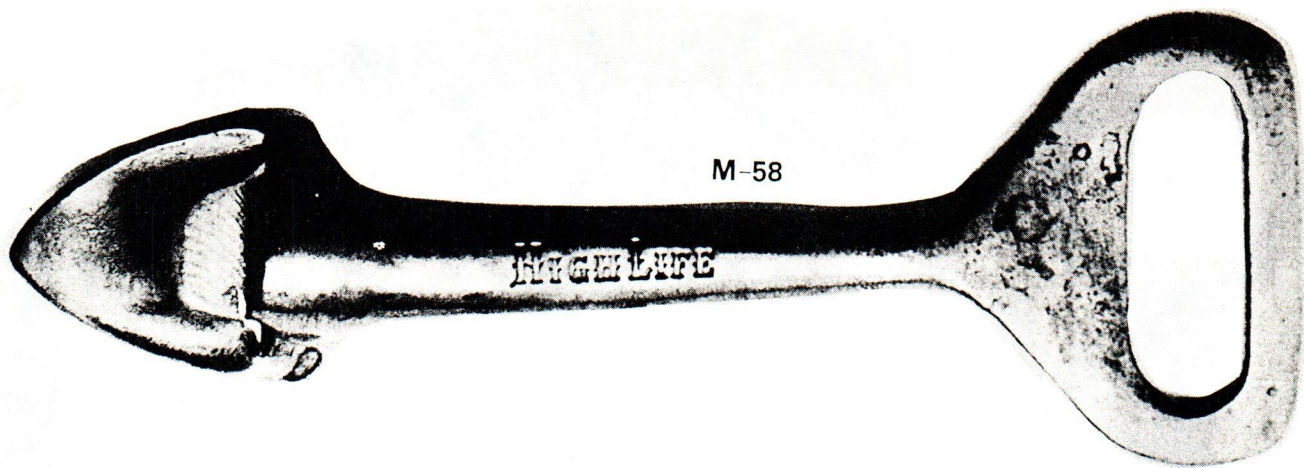
G-21



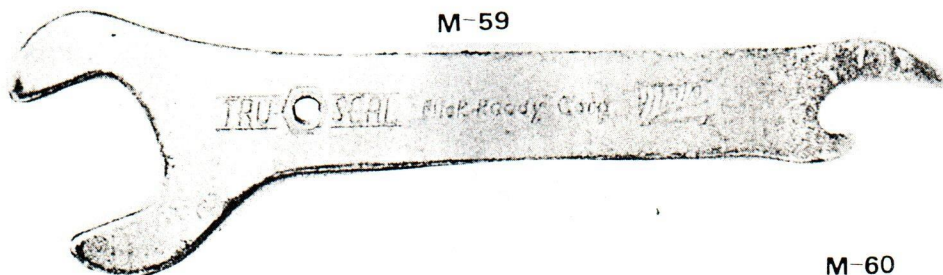
G-22



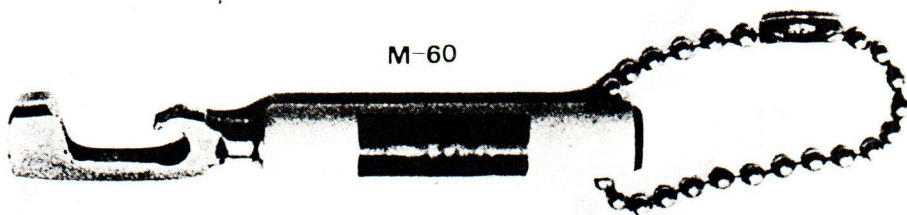
I-26



M-58



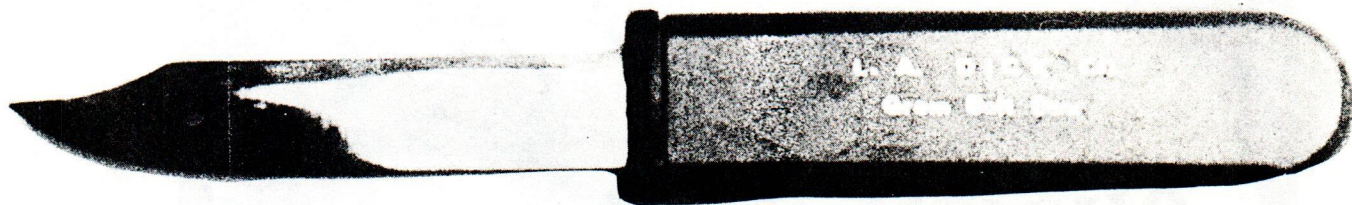
M-59



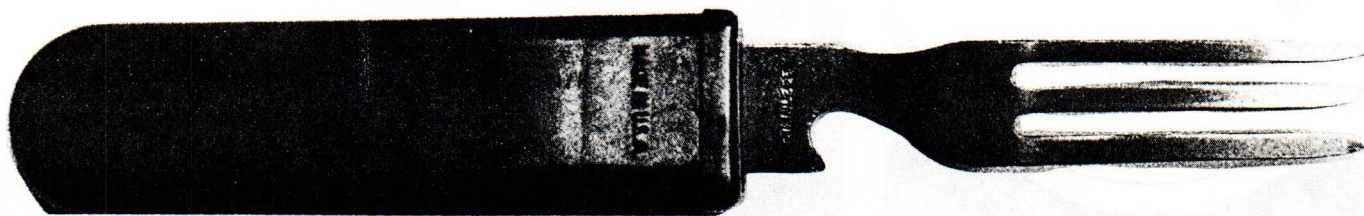
M-60

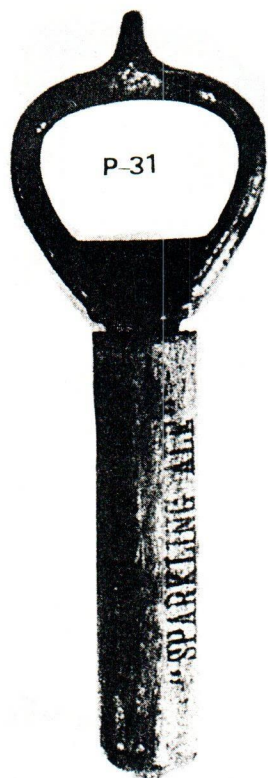


N-38

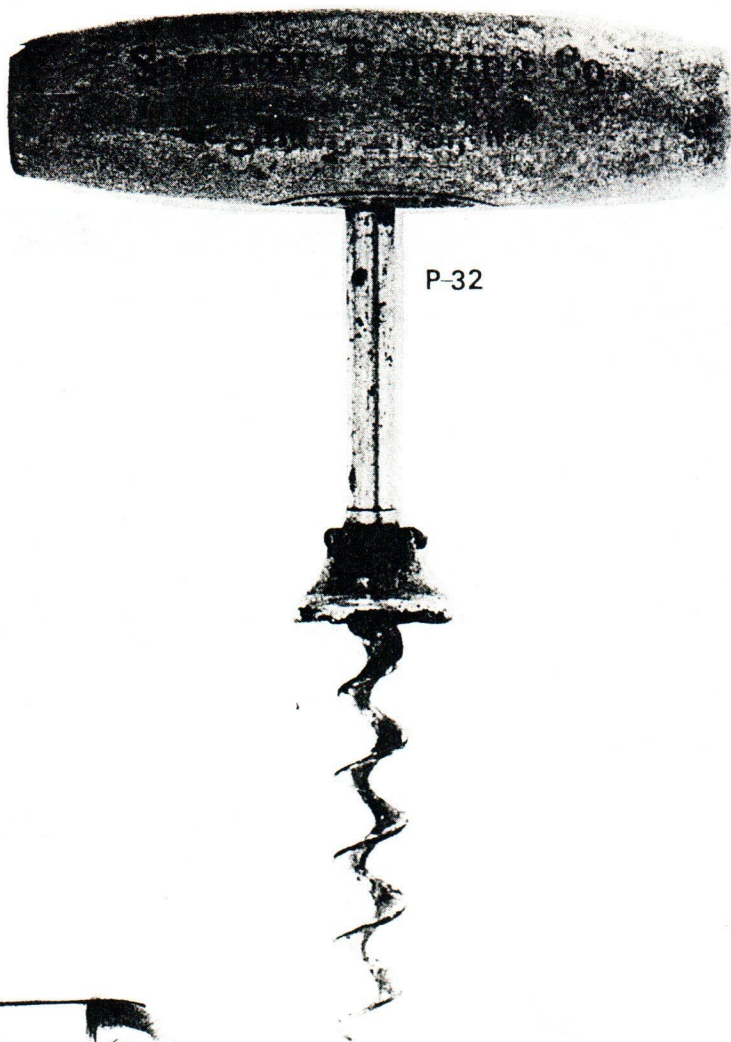


N-39

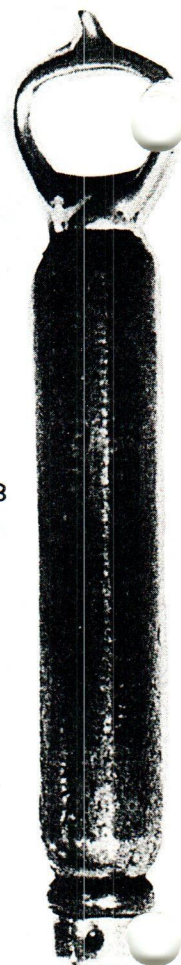




P-31



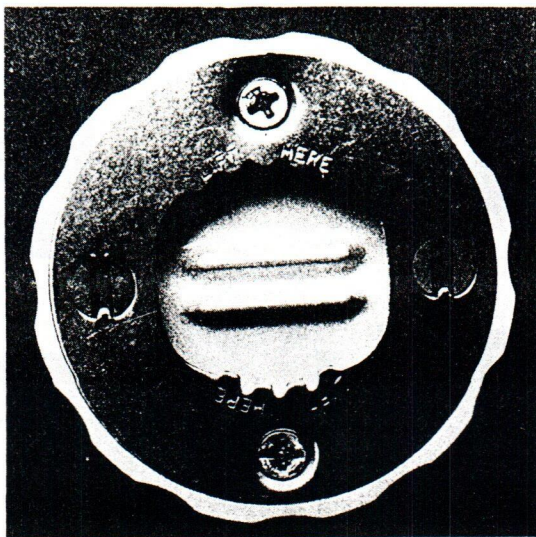
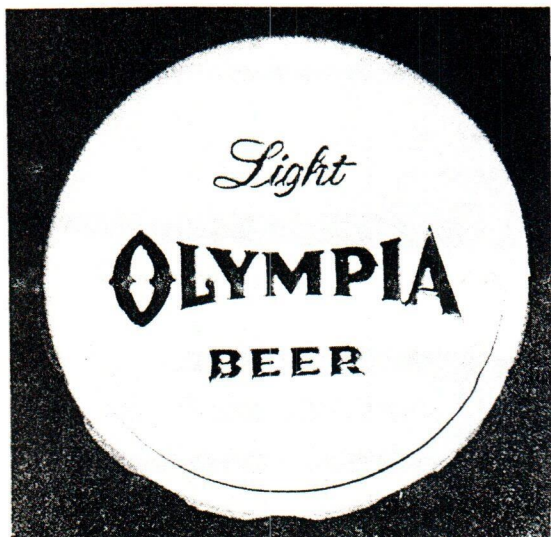
P-32



P-33



P-34

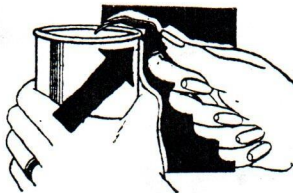


HOW TO SERVE AND OPEN CANS

BE sure to ask your dealer for a "Quick and Easy" opener—no other opener will do.



TO open can, hook opener under rim of can as shown. Be sure contents is cold and do not shake before opening.



PLACE the can on a solid surface, then place hand over opener on top of can. Lift opener quickly—straight up. One firm stroke cuts complete opening.



REMOVE opener and pour. To serve an appetizing glass of Beer or Ale wash glasses in clear cold water and salt. Never use soap.



These opening instructions are from a brochure introducing Krueger Beer in cans (early 30's). I have a number of the original brochures. If you would like one, send large SASE - first come, first serve... Don Bull.

STARR

TRADE MARK REG.

STATIONARY BOTTLE OPENERS

Eliminate loss of bottles and contents. Prevent danger to the public. Have long life.

Brown Manufacturing Co., Inc.
NEWPORT NEWS, VA.



HOW IT WORKS

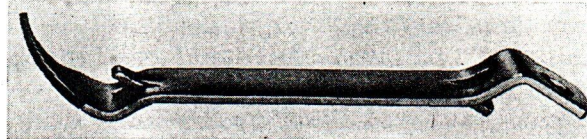
The World's Best Opener



Offer New Can Openers

New "Arcuate Profile" can openers introduced by the Ekco Products Co., Chicago, Ill., are designed to eliminate distortion of the new aluminum lids and to reduce by 15 per cent the pressure required to pierce aluminum or steel lids.

"Arcuate," which means curved or arched like a bow, describes the improvement—a perfect curve on the can piercer head. With the flat



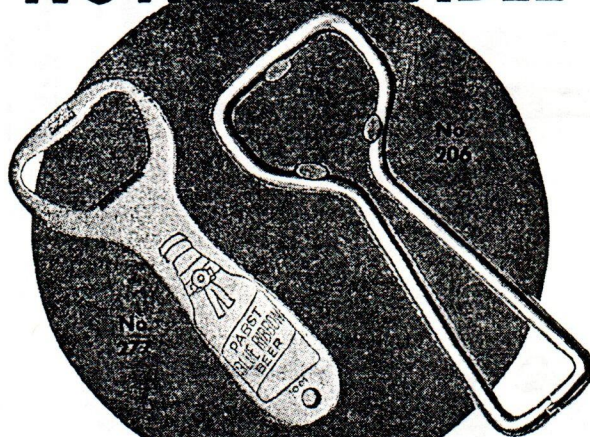
area from fulcrum to point removed, better leverage is afforded and two pounds less pressure is required to pierce.

Because pressure is reduced, aluminum lids will not distort—an improvement for use and safety of aluminum lids.

Ekco has applied for patent on the new design which Tom Burchill, sales manager for the company's Emro Division, has called "the greatest improvement in can tappers in 20 years."

This new product release appeared in the March, 1963 issue of *Brewers Digest* (submitted by Phil Fouch). A patent application was filed on Feb. 28, 1963 by inventors Ernest Thomas of Roselle, Ill. and Mark Rodman of Mundelein, Ill. as assignors to Ekco Products. Patent #3,199,192 was granted Aug. 10, 1965.

"NOW AVAILABLE"



TWO FAMOUS GOOD WILL BUILDERS

Vaughan's

QUALITY BOTTLE OPENERS!

For more than 35 years Vaughan's Bottle Openers have reflected the quality products of the beverage industry. And now two of the most popular bottle openers are available. Write for data on No. 206 Wire and No. 277 Extra Heavy Duty Bottle Opener.

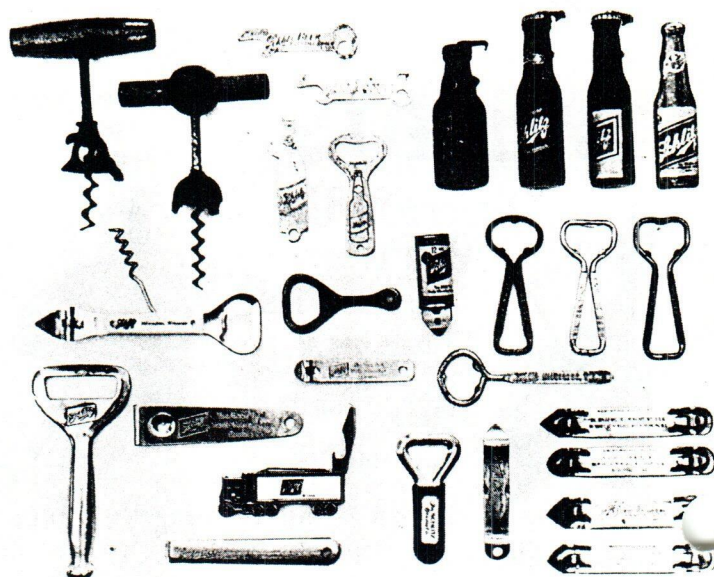
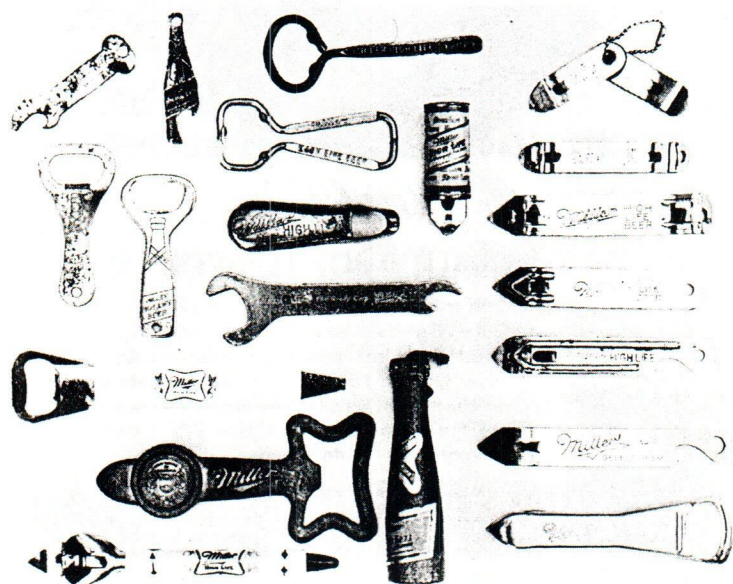
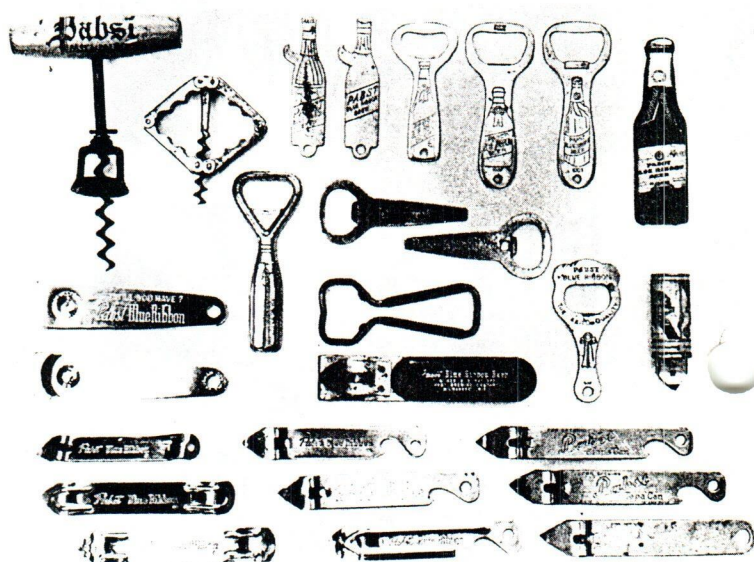
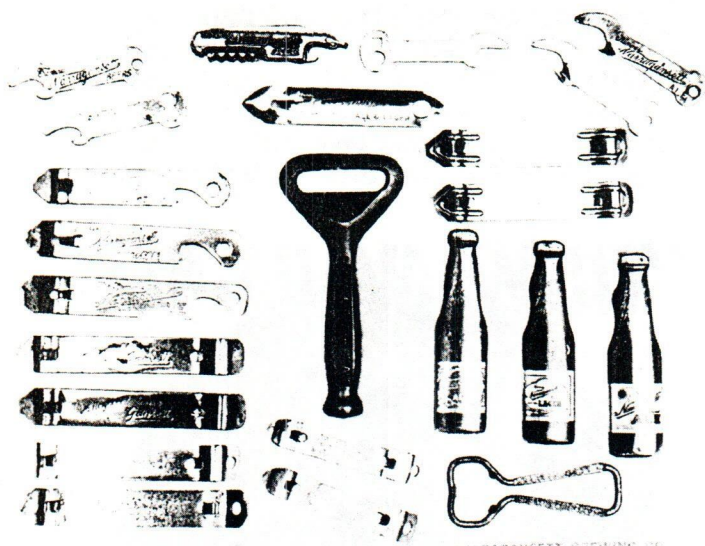
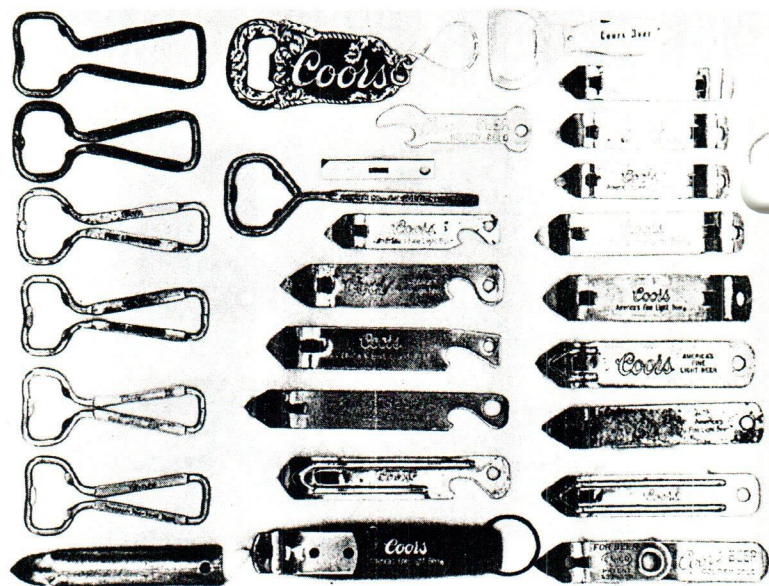


VAUGHAN NOVELTY MFG. CO.

"World's Largest Manufacturers of Bottle Openers and Can Openers"
3211-23 CARROLL AVENUE CHICAGO 24, ILL., U. S. A.

The Brown and Vaughan ads appeared in the *Bottlers Gazette* in Feb., 1946 (submitted by Phil Fouch).

As openers become harder and harder to find, collectors are seeking out openers in special areas of interest:
Geographic area: Fouch, Michigan; Cardone, Ohio; Lundell, New Jersey; Carter, Maryland; Snyder, Erie, Pa.; Herrmann, Buffalo, N.Y.; Deachman, Colorado; Chapman, Missouri; Martyniak, Mass.; Hibbeler, St. Louis.
Brands: Nowicki, Hamm's; Nichols, Anheuser-Busch; Sperr, Yoergs and Hamm's; Atkinson, Coca Cola (and beer); Burroughs, Amer. Can (e.g. I-7)
Types: Griggs, E; Weston, D; Beebe, F-2; Freeman, K; Balaban, corkscrews; Ziegelmaier, corkscrews.
 Pictured here are collections from Coors, Narragansett, Pabst, Miller, and Schlitz.





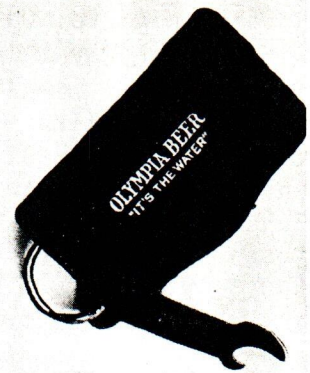
Bill McKenzie is the proud owner of this pair of Type K-4 Tapsters. Both of these have Pabst in raised letter on both sides. The Tapster on the left has a copper plated body and there is a square bend in the handle. The one on the right has a chrome plated body and the handle is rounded; it has an enamel "Pabst Breweries" symbol. Supposedly there were nine Pabst Tapsters made and there were none made with other advertising. I know of three other Pabst Tapsters than the above. Please advise JFO of any you might know about.



Four different Pickwick openers from the Boston Brewing concern of Haffenreffer & Co.

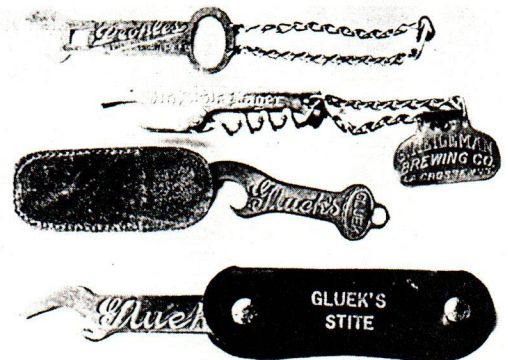


Note the similarity between this opener and type B-11 as shown in BEER ADVERTISING OPENERS. Perhaps these Rainier openers were made with a variety of pieces attached to them. Anyone have any data on this?



Pre-prohibition openers with a variety of leather cases and key chains.

(Murphy)



The box for Type Z-1. Patent No. on box is 780,149 which is the patent number for a Bob Sled Runner issued in 1905. It cannot be a Design Patent # as the No. is too high. Any thoughts?

Reproduction of 1922 Vaughan Novelty Mfg. Co. Catalog. Although this catalog was issued during prohibition, it is interesting to note the reproduction of beer advertising openers - Schlitz, Schoenhofen, etc. Obviously, these were made prior to the Jan., 1920 effective date of the 18th amendment.

CATALOG and PRICE LIST
No. 25
1922

Vaughan Novelty Mfg. Co.
MANUFACTURERS
OF
ADVERTISING NOVELTIES
AND
PREMIUM METALS

3211-26 Carroll Avenue
Chicago, Ill., U.S.A.

To The Trade:
On the first of each year we publish a booklet containing descriptions of our lines. The policy of our house is to produce merchandise of merit and to sell it at the most reasonable prices possible.

We like to feel and have our customers appreciate that business in more than mere barter and sale. Our object is to make well and trade fairly, to profit and allow no dollars lost in the good will of those we serve, to make a customer in the future for each sale in business.

Our prices are reasonable always just and fair to you and usually just and fair to ourselves.

If you are a new customer, we invite you to investigate our standing, our facilities and our record. We want the opportunity of putting our claims to further by means of your actual order. We have no use for money and satisfy you.

To our thousands of old customers we extend our thanks for their valued patronage and invite their examination of the following pages.

We manufacture everything we sell.

Vaughan Novelty Mfg. Co.
Chicago, Ill., U.S.A.

The type G-13 opener shown on page 14 of the catalog is marked "Perfection," Vaughan's name for the opener. The lettering on the G-13 marked "Perfection" which may be from Horlacher Brewing is different from the lettering shown here. Has anyone seen the horsehead opener (Page 25) with advertising?

Our New Home
Completed During 1920

ADVERTISING NOVELTIES

Vaughan Novelty Mfg. Co., Chicago, Ill., U.S.A.

Carroll and Kuhn Ave.

LETTER OPENER No. 1

Full Length 4 1/2 in. Blade 3 in. Width 1/2 in. Weight 1/2 oz. Price 10c.

HAT CLEANER No. 2

Full Length 4 1/2 in. Blade 3 in. Width 1/2 in. Weight 1/2 oz. Price 10c.

EAGLE HEAD DESIGN No. 3

Full Length 4 1/2 in. Blade 3 in. Width 1/2 in. Weight 1/2 oz. Price 10c.

REVERSE SIDE No. 4

Full Length 4 1/2 in. Blade 3 in. Width 1/2 in. Weight 1/2 oz. Price 10c.

SPINNING TOP No. 5

Full Length 4 1/2 in. Blade 3 in. Width 1/2 in. Weight 1/2 oz. Price 10c.

WHEELBARROW No. 6

Full Length 4 1/2 in. Blade 3 in. Width 1/2 in. Weight 1/2 oz. Price 10c.

NOVELTY DESIGN No. 7

Full Length 4 1/2 in. Blade 3 in. Width 1/2 in. Weight 1/2 oz. Price 10c.

VAUGHAN'S ORANGE PEELER No. 8

Full Length 4 1/2 in. Blade 3 in. Width 1/2 in. Weight 1/2 oz. Price 10c.

BROOM HOLDER No. 9

Full Length 4 1/2 in. Blade 3 in. Width 1/2 in. Weight 1/2 oz. Price 10c.

HORSE HEAD DESIGN No. 10

Full Length 4 1/2 in. Blade 3 in. Width 1/2 in. Weight 1/2 oz. Price 10c.

NOVELTY DESIGN No. 11

Full Length 4 1/2 in. Blade 3 in. Width 1/2 in. Weight 1/2 oz. Price 10c.

KETTLE SCRAPER No. 12

Full Length 4 1/2 in. Blade 3 in. Width 1/2 in. Weight 1/2 oz. Price 10c.

OFFER COMBINATION No. 13

Full Length 4 1/2 in. Blade 3 in. Width 1/2 in. Weight 1/2 oz. Price 10c.

OVERALL DESIGN No. 14

Full Length 4 1/2 in. Blade 3 in. Width 1/2 in. Weight 1/2 oz. Price 10c.

LION HEAD DESIGN No. 15

Full Length 4 1/2 in. Blade 3 in. Width 1/2 in. Weight 1/2 oz. Price 10c.

CONDENSE MILK BOTTLE OPENER No. 16

Full Length 4 1/2 in. Blade 3 in. Width 1/2 in. Weight 1/2 oz. Price 10c.

VAUGHAN'S LUMINOUS HOLDER No. 17

Full Length 4 1/2 in. Blade 3 in. Width 1/2 in. Weight 1/2 oz. Price 10c.

HORSE HEAD DESIGN No. 18

Full Length 4 1/2 in. Blade 3 in. Width 1/2 in. Weight 1/2 oz. Price 10c.

NOVELTY DESIGN No. 19

Full Length 4 1/2 in. Blade 3 in. Width 1/2 in. Weight 1/2 oz. Price 10c.

MILK BOTTLE OPENER No. 20

Full Length 4 1/2 in. Blade 3 in. Width 1/2 in. Weight 1/2 oz. Price 10c.

VAUGHAN'S LUMINOUS HOLDER No. 21

Full Length 4 1/2 in. Blade 3 in. Width 1/2 in. Weight 1/2 oz. Price 10c.

HORSE HEAD DESIGN No. 22

Full Length 4 1/2 in. Blade 3 in. Width 1/2 in. Weight 1/2 oz. Price 10c.

NOVELTY DESIGN No. 23

Full Length 4 1/2 in. Blade 3 in. Width 1/2 in. Weight 1/2 oz. Price 10c.

CONDENSE MILK BOTTLE OPENER No. 24

Full Length 4 1/2 in. Blade 3 in. Width 1/2 in. Weight 1/2 oz. Price 10c.

VAUGHAN'S LUMINOUS HOLDER No. 25

Full Length 4 1/2 in. Blade 3 in. Width 1/2 in. Weight 1/2 oz. Price 10c.

HORSE HEAD DESIGN No. 26

Full Length 4 1/2 in. Blade 3 in. Width 1/2 in. Weight 1/2 oz. Price 10c.

NOVELTY DESIGN No. 27

Full Length 4 1/2 in. Blade 3 in. Width 1/2 in. Weight 1/2 oz. Price 10c.

MILK BOTTLE OPENER No. 28

Full Length 4 1/2 in. Blade 3 in. Width 1/2 in. Weight 1/2 oz. Price 10c.

VAUGHAN'S LUMINOUS HOLDER No. 29

Full Length 4 1/2 in. Blade 3 in. Width 1/2 in. Weight 1/2 oz. Price 10c.

HORSE HEAD DESIGN No. 30

Full Length 4 1/2 in. Blade 3 in. Width 1/2 in. Weight 1/2 oz. Price 10c.

NOVELTY DESIGN No. 31

Full Length 4 1/2 in. Blade 3 in. Width 1/2 in. Weight 1/2 oz. Price 10c.

CONDENSE MILK BOTTLE OPENER No. 32

Full Length 4 1/2 in. Blade 3 in. Width 1/2 in. Weight 1/2 oz. Price 10c.

VAUGHAN'S LUMINOUS HOLDER No. 33

Full Length 4 1/2 in. Blade 3 in. Width 1/2 in. Weight 1/2 oz. Price 10c.

HORSE HEAD DESIGN No. 34

Full Length 4 1/2 in. Blade 3 in. Width 1/2 in. Weight 1/2 oz. Price 10c.

NOVELTY DESIGN No. 35

Full Length 4 1/2 in. Blade 3 in. Width 1/2 in. Weight 1/2 oz. Price 10c.

1981 DIRECTORY OF OPENER COLLECTORS

ALAMEDA, Dennis, 4758 Balboa Way, Fremont, CA 94536.....	(415)	797	8448
APPEL, Gene, 38915 Deer Run Road, Palmdale, CA 93550.....	(805)	947	6968
ASHBAUGH, Larry J., P.O. Box 693, Mercury, NV 89023.....	(702)	986	9274
ASHENDORF, Herb, 21 Montclair Rd., Yonkers, NY 10710 (Dealer-Auctions)...	(914)	337	0616
ATKINSON, Jim & Sherri, 123 Corinne Ave., Santa Cruz, CA 95065.....	(408)	475	6484
BALABAN, Joseph E., 6264 Commonwealth Ct., Indianapolis, IN 46220.....	(317)	253	9755
BAUER, John, Rt. 2, Box 802K, Klamath Falls, OR 97601.....	(503)	882	4507
BEEBE, Leon P., Rt 7, 601 E. Macon Dr., Tucson, AZ 85706 (Type F-2).....	(602)	762	5531
BERRY, Mike, 16011 Via Paro, San Lorenzo, CA 94580.....	(415)	276	6962
BIEHL, Lawrence F., 448 Crandon, Calumet City, IL 60409.....	(312)	891	4269
BIDDLE, John, 1016 Daniel Drive, Petaluma, CA 94952.....	(707)	763	4625
BORCHERT, David L., 603 Flintridge Drive, Fairborn, OH 45324.....	(513)	879	1625
BRAEUNER, Raymond H., 1520 Horine Road, Festus, MO 63028.....	(314)	937	6805
BULL, Donald A., 63 October Lane, Trumbull, CT 06611.....	(203)	261	2398
BURROUGHS, John D., 824 Skyline Dr., Barrington, IL 60010.....	(312)	381	6075
CARDONE, Joe, 1833 Rosemont Blvd., Dayton, OH 45420.....	(513)	254	6796
CARTER, Robert P. Jr., 3809 Spring Meadow Dr., Ellicott City, MD 21043...	(301)	465	8192
CHAPMAN, Bob, 2225 Entity Ave., St. Louis, MO 63114.....	(314)	426	2421
CHERNEY, M.S., 3314 Scenic Drive, Cedar Falls, IA 50613.....	(319)	266	5748
CRESS, David R., 1816 Elizabeth St., Janesville, WI 53545.....	(608)	752	7262
DAROCY, Alex, 26 Oak Road, Santa Cruz, CA 95060.....	(408)	423	4199
DAZEY, Ken, 3170 Kentuck Way, North Bend, OR 97459.....	(503)	756	7230
DEACHMAN, Gary, 877 Mobile St., Aurora, CO 80011.....	(303)	341	5259
DieKEMPER, Al T., 1709 No. Bruce St., Las Vegas, NV 89030.....			
DONOVAN, F.D., 11350 McGirk Ave., El Monte, CA 91732.....	(213)	442	3815
DUMMER, Duane H., 910 N. Palmatory St., Horicon, WI 53032.....	(414)	485	3395
ENLOE, Glen, 10530 E. 9th St., Independence, MO 64053.....	(816)	833	0317
FEHR, Donald, 407 Chestnut Ave., Northfield, NJ 08225.....	(609)	641	5910
FORD, J.Y., 5351 Boyd Ave., Oakland, CA 94618.....	(415)	655	5393
FOUCH, Phillip D., 20944 Eastwood, Warren, MI 48089.....	(313)	779	2967
FREEMAN, James, 1514 LaMesa Lane, Burlingame, CA 94010.....	(415)	342	4346
FRIZZLE, William A., P.O. Box 301, Ocean Park, ME 04063.....	(207)	934	9683
GARATTI, Mary E., P.O. Box 2712, Petaluma, CA 94953.....	(707)	664	1172
GIBSON, Paul, 315 N. 14th, Murphysboro, IL 62966.....	(618)	684	3863
GOFF, John W., 577 Brookhaven, Kirkwood, MO 63122.....	(314)	966	3211
GRIFFIN, Carla A., 512 S. Louis St., Mount Prospect, IL 60056.....	(312)	253	7643
GRIGGS, Clayton, 808 S. Ash, McPherson, KS 67460.....	(316)	241	2549
GROWE, A.W. (Andy), 1201-198 Sycamore Terr., Sunnyvale, CA 94086.....	(408)	241	5664
HAARBERG, Delbert, 15562 El Capitan Way, Delhi, CA 95315.....	(209)	634	8096
HARDING, Russ, 6960 Mikado Lane, Colorado Springs, CO 80919.....	(303)	599	3378
HARTMANN, William Co., P.O. Box 84, Washington, NJ 07882.....	(201)	689	4323
HAYDOCK, Herbert, 1660 2nd Ave. South, Wisconsin Rapids, WI 54494.....	(715)	423	8995
HAYES, Edmond M., 210 Ninth St., Hudson, WI 54016.....	(715)	386	2113
HEFLIN, Gene, 6908 W. 52nd Pl., Apt. 3-B, Mission, KS 66202.....	(913)	722	1756
HERRMANN, Edward R., 53 Louis Ave., W. Seneca, NY 14224.....	(716)	675	2437
HIBBELER, Ollie Jr., 31 Country Life Drive, O'Fallon, MO 63366.....	(314)	272	3185
HICKOK, Frank F., 419 Franklin St., P.O. Box 32, Ogdensburg, NY 13669....	(315)	393	1960
HODGE, Jeff, 1398 Sheridan, Pomona, CA 91767.....	(714)	621	2526
HOFF, Donald J., 6512 Wealthy, Clarkston, MI 48016.....	(313)	625	1655
HORN, John, 2828 Chestnut Lane, New Richmond, OH 45157.....	(513)	553	3751
HOWARD, Dennis, Box 45, Woodruff, WI 54568.....	(715)	356	5468
HUFFMAN, Raymond L., P.O. Box 33006, N. Royalton, OH 44133.....	(313)	356	7427
HYLAND, John, 9007 Surrey Drive, Pendleton, IN 46064.....	(317)	778	4025
IMMEL, Albert E., 641 Sheridan Drive, Box 612, Lancaster, OH 43130.....	(614)	654	9656
JANTOS, Carl T., 7025 Kevin Drive, Bethel Park, PA 15105.....	(412)	833	4866
JOHNSON, Arthur F., Box 317, Mendon, MA 01756.....	(617)	473	2780
KAUFFMAN, Frank C., P.O. Box 1474, Grand Junction, CO 81502.....	(303)	241	0830
KAYE, Ed, 1840 Major Drive, Golden Valley, MN 55422.....	(612)	588	2821
KORNDORFER, Harry, 232 Pebble Beach Road, Lakeville, NY 14480.....	(716)	346	5913

LABESKA, Thomas F., 725 Trumbull Ave., Lawrenceville, NJ 08648.....	(609)	599	9287
LANDINO, Arthur, 88 Centerbrook Road, Hamden, CT 06518.....	(203)	281	1085
LEON, Richard, 220 S. Atlantic Ave., Haddonfield, NJ 08033.....	(609)	429	0339
LOGAN, Joseph M., 5609 E. 33rd St., Tucson, AZ 85711.....	(602)	790	6136
LOHMILLER, George, 2924 Orchard Ave., Grand Junction, CO 81501.....	(303)	243	3208
LOTHRIDGE, Thomas, 31 Pearl St., Bainbridge, NY 13733.....	(607)	967	8575
LOVE, Jack E., 2480 W. 900 S., Fairmount, IN 46928.....	(317)	948	5736
LUNDELL, Peter, 35 Barbara Lane, Oakland, NJ 07436 (N.J. Openers).....	(201)	337	5767
MARTYNIAK, John, Box 128, Cambridge, MA 02139.....			
McNALLY, Harold E., 349 N.W. 45 Court, Ft. Lauderdale, CA 33309.....	(305)	772	5355
MICK, Eddie, 2307 Las Cruces, Dallas, TX 75227.....	(214)	388	0253
MURPHY, Dennis J., P.O. Box 15, Wheeler, WI 54772.....	(715)	632	2357
NEUSER, Charles J., 2110 Mt. Vernon Ave., Janesville, WI 53545.....	(608)	756	3948
NICHOLS, Ed, 983 E. 31 St., Brooklyn, NY 11210 (Anheuser-Busch openers).....	(212)	377	5688
NOWICKI, Peter J., 2239 24th Ave., San Francisco, CA 94116 (Hamm's).....	(415)	566	8445
O'BRIEN, William E., 4035½ Albatross, San Diego, CA 92103.....	(714)	295	6078
ORTH, Dennis R., 8335 N. Ann St., Milwaukee, WI 53224.....	(414)	355	9254
OSBORN, Jim, 424 5th Ave., Ottawa, IL 61350.....	(815)	433	3725
PETERS, Roger D., P.O. Box 5073, Cottonwood, CA 96022.....	(916)	347	4741
PRESLEY, Steve, 459 LaCresta Drive, Vacaville, CA 95688.....			
REED, Don, 3437 Raymond St., Laureldale, PA 19605.....	(215)	929	1339
REEVES, Fern E., P.O. Box 1624, Paso Robles, CA 93446.....	(805)	238	1779
REID, Ross L., 35154 Keller Drive, Avon, OH 44011.....	(216)	937	6534
REIDLING, Hank, 8847 Liptonshire, Dallas, TX 75238.....	(214)	341	4091
ROGERS, James L., 91 Ridgecrest Road, Rochester, NY 14626.....	(716)	225	6716
RORTVEDT, Robert, 136 N. Elmore, Park Ridge, IL 60068.....	(312)	823	7855
ROSS, Rolla R., 96 Valley Road, 10, Cos Cob, CT 06807.....	(203)	869	8314
SANTEN, Arthur, 6126 McPherson, St. Louis, MO 63112.....	(314)	863	6798
SCHELE, Jerry B., 3744 Pineview Drive, Fort Wayne, IN 46815.....	(219)	483	6350
SCHLEGEL, Morry, RR 2, LaMoille, IL 61330.....	(815)	638	2711
SENUTA, Thomas W., Fanning Road, RFD#5, Norwich, CT 06360.....	(203)	889	0654
SHERMAN, Don, 438 Mavis Drive, Los Angeles, CA 90065.....	(213)	225	7870
SHERRIEB, H.W., P.O. Box 7309, Amarillo, TX 79109.....	(806)	352	8713
SILVERMAN, William J., 25 Braeburn Drive, Park Forest, IL 60466.....	(312)	748	2136
SNYDER, John N., 3882 Hereford Road, Erie, PA 16510 (Erie, PA Breweries).....	(814)	899	6275
SPERR, Don & Donna, 1675 Upper Afton Road, St. Paul, MN 55106.....	(612)	771	9497
STAHLY, Robert J., 1508 E. Bridge St., Streator, IL 61364.....	(815)	672	4323
STAWARZ, Henry, 5730 S. Neva, Chicago, IL 60638.....	(312)	586	7020
STRINY, Ted, 814 W. Minnehaha Ave., St. Paul, MN 55104.....	(612)	488	1674
TIDD, James W., RFD 1, Beverly, OH 45715.....	(614)	783	3234
VanVACTOR, Robert E., Route #1, Box 3, Stanberry, MO 64489.....	(816)	783	2245
WAGNER, Paul H., 944 Hale St., Pottstown, PA 19464.....	(215)	326	5419
WALDO, Harriet, 1820 Greenberry Road, Jefferson City, MO 65101.....	(314)	636	2537
WALLING, Glenn, 3200 Columbus St., Bakersfield, CA 93306.....	(805)	871	0759
WARD, Lawrence D., 118-D Lyellwood Pkwy., Rochester, NY 14606.....	(716)	426	2233
WEBER, Alphonse, 504 Madison St., Ellis, KS 67637.....	(913)	726	4870
WESTON, Barry, P.O. Box 1, Forestville, N.S.W., AUSTRALIA 2087.....	(02)	451	4598
WILKEY, Dick, 118 W. Cherry St., Bluffton, IN 46714.....	(219)	824	4370
WULFF, Rod, 623 Fernway, Eldersburg, MD 21784.....	(301)	795	0771
ZIEGELMAIER, Paul, 8351 Citrus Wood Lane, Citrus Heights, CA 95610.....	(916)	726	8156

LATE ADDITIONS

BRAND, Al, 910 Milton Ave., Fort Wayne, IN 46806.....	(219)	745	1264
GEYER, Ray, 113 Ashwood Way, Harrisburg, PA 17109.....	(717)	545	0910
GOUGH, G.W., 403 East Main St., Fulton, MS 38843.....			
GREEN, Craig, 31147 E. Lk. Morton Dr. S.E., Kent, WA 98031.....	(206)	631	7318
GRISHAM, Edith, 3219 Rice Blvd., Houston, TX 77005.....	(713)	667	1547
KATTENBURG, Bob, 3743 Iarch Court, Concord, CA 94519.....	(415)	687	5729
SPENCER, Dick, 1250 Mac Drive, Stow, OH 44224.....	(216)	650	4927
VESPER, William E., Box 19, RFD 2, Staunton, IL 62088.....	(618)	635	3466
VOLLRATH, Verne E., 218 S. Lexington Dr., Janesville, WI 53545.....	(608)	752	5708

